



Celebrating 70 Years
BREEDING SANTA GERTRUDIS

2024 Bull Sale

YULGILBAR
SANTA GERTRUDIS STUD NO.13



Yulgilbar

SANTA GERTRUDIS
STUD NO. 13

2024 Production Sale

FRIDAY 6th SEPTEMBER

Broadwater Sales Complex,
Yulgilbar Station, Baryulgil NSW

Cattle on Display from 9am
Sale commences 12 noon

Sale Inspection: Saturday 17th August

OFFERING:

67 Santa Gertrudis Bulls

4 Sangus Bulls

4 Stud Female PTIC

 AuctionsPlus

Brett Ellem,
General Manager

Yulgilbar Station
Baryulgil NSW 2460

P 02 6647 2101 **M** 0427 772 507

E brett.ellem@yulgilbar.com.au

Darren Perkins

M 0428 660 324



**VIEW SALE
VIDEOS & MORE
INFO HERE**

Visit our web site or facebook page for further sale information and supplementary sheets as they come available.

Please bring this catalogue to the sale.

www.yulgilbar.com.au





2024 Annual Production Sale Welcome

BY SARAH MYER

**Dear Valued Bull Buyers,
Welcome to the 2024 Yulgilbar Pastoral Company Annual Production Sale.**

This year marks the momentous 70th anniversary since my father, Samuel Hordern, founded the Yulgilbar Santa Gertrudis Stud at Yulgilbar Station, utilising top bulls from the prestigious King Ranch Stud in the United States.

Following my father's untimely death in 1960, Yulgilbar's legacy has been carried forward by my late husband, Bails, and myself and, in more recent years, under the dedicated stewardship of our children, Sidney Myer, Rupert Myer, and Samantha Baillieu, who have been integral to its success for many years.

As the third oldest Santa Gertrudis stud still active in Australia, Yulgilbar holds a special place in our hearts. Over the past seven decades, we have consistently been at the forefront of breeding premier Santa Gertrudis cattle, setting benchmarks in the industry.

In the early days, bulls from King Ranch, Murrumbo, Yarrawonga, Rosevale, Cumberland, and The Lakes played crucial roles in shaping our herd, along with our home-bred sires.

Today, the influence of remarkable sires like Warena Sahara and Cardona Patterson remains evident, with their progeny continuing to enhance our breeding program. This year's sale will feature other distinguished sire lines, including Waco Queenslander, Hardigreen Park Vice Roy, Yulgilbar Nevada, and Dunlop sires, along with the inaugural offerings from Yulgilbar Quicksilver and Murgona Nightcap.

Under the expert management of Brett Ellem, Yulgilbar Pastoral Company is in exemplary hands. Brett's leadership ensures that our operation maintains its high standards and continues to innovate in breeding practices. I thank him and Lucy and the dedicated and talented team working alongside them. We are all excited to present to you a diverse selection of our best genetics.

Along with Sidney, Rupert, and Samantha and their families, please accept our warmest welcome to you all. We hope you find exceptional additions to your herds and enjoy your time with us at the Yulgilbar Annual Production Sale.

Warm regards,
Sarah Myer



Sale information

GUARANTEE

All stud stock are guaranteed breeders. Any claim against the breeding ability of any animal should be made in writing and accompanied by a veterinary certificate within 6 months of sale. In the event of an animal failing to breed, it may be either replaced with an animal of comparable value or credit to the purchase price will be given at the following sale or on a private sale animal.

All lots sell as EU Accredited

Vendor rebate – The vendors agree to pay:

STUD CATTLE

- 4% rebate to outside agents who
 - Introduce buyers in writing at least 24 hours prior to the sale.
 - Accompany client to the sale.
 - Settle all accounts in full no later than Friday 10th September 2024.
- 2% rebate to outside agents who introduce buyers at least 24 hours prior to sale and settle all accounts in full no later than Friday 10th September 2024.
- **No rebate will be paid outside these conditions (strictly enforced).**

Delivery of sale cattle will be given from Saturday 4th September 2024. No verbal instructions will be accepted and no cattle are to be loaded without approval of Brett Ellem or the delivery agent (George and Fuhrmann). Please fill out the delivery form at the back of the catalogue.

HEALTH

- Yulgilbar Station is an accredited TB and Brucellosis free herd.
- Stock from Yulgilbar Station (Broadwater Sales Complex) will be free to move.
- Yulgilbar Station is currently rated Johnnes JBAS 7 in NSW and has completed Bio security plans which can be viewed on request on sale day.

VACCINATION PROGRAM

All stud cattle will have been vaccinated for:

- Botulism
- 3 day sickness
- 7-1
- Bulls for vibrio
- All cattle have been treated with Dectomax V and Flukecare C.
- Pestivirus and tested negative for Persistently Infected (P.I.) animals
- Treated with Rhinogard and Bioshield

To maintain ongoing immunity, it is recommended that you vaccinate your purchases with an annual booster shot in June each year.

SALE AGENTS:

George and Fuhrmann

Darren Perkins **M** 0428 660 324
Casino Office **P** 02 6662 2500 **F** 02 6662 1736
Jason Somerville **M** 0429 660 657
David O'Reilly **M** 0428 299 743
Riley Wellman **M** 0499 222 514

Yulgilbar Station PIC number - NF281077

LPA level 2 # P2002171

MSA Producer #C106

Member NSW Farmers

Member Santa Gertrudis Breeders Australia Association
P 07 3216 2708

Santa Gertrudis Group Breed Plan

Horn Poll test by Zoetis

Bulls Semen and Morphology Tested, Soundness Evaluated By:

Ced Wise Veterinary Services, Glen Aplin QLD

Dr Cedric Wise **M** 0428 718 640

Fat, Eye Muscle Scanned

Roger Evans **M** 0427 102 258

Herd Health

Phillip Sharman, Casino Vet Clinic **P 02 6662 2488**

Pregnancy testing of sale females

Tested negative for P.I. (persistently infected) for Peste Virus

TELEPHONE LINK UP

In the event of you being unable to be at the sale and would like to bid, we will arrange for a phone link up should you wish to participate. Please contact the vendor or your preferred agent prior to the sale. Live online bidding available.

Disclaimer

Whilst all due care and attention has been paid to the accuracy in the compilation of this catalogue, either the vendors (or their employees) nor the selling agents assume any responsibility what so ever for the correctness, use or interpretation of the information included this sale catalogue.

All persons attend Yulgilbar Station and the sale at their own risk.



GETTING HERE

Sale at Broadwater Sales Complex, Yulgilbar Station, Baryulgil NSW

Please note poor mobile service



Google directions to Yulgilbar sale:

<https://maps.google.com.au/maps/ms?msid=205627425238397212181.00048d734cb180c56b0c8&msa=0&ll=-28.671311,150.413818&spn=4.46239,9.876709>

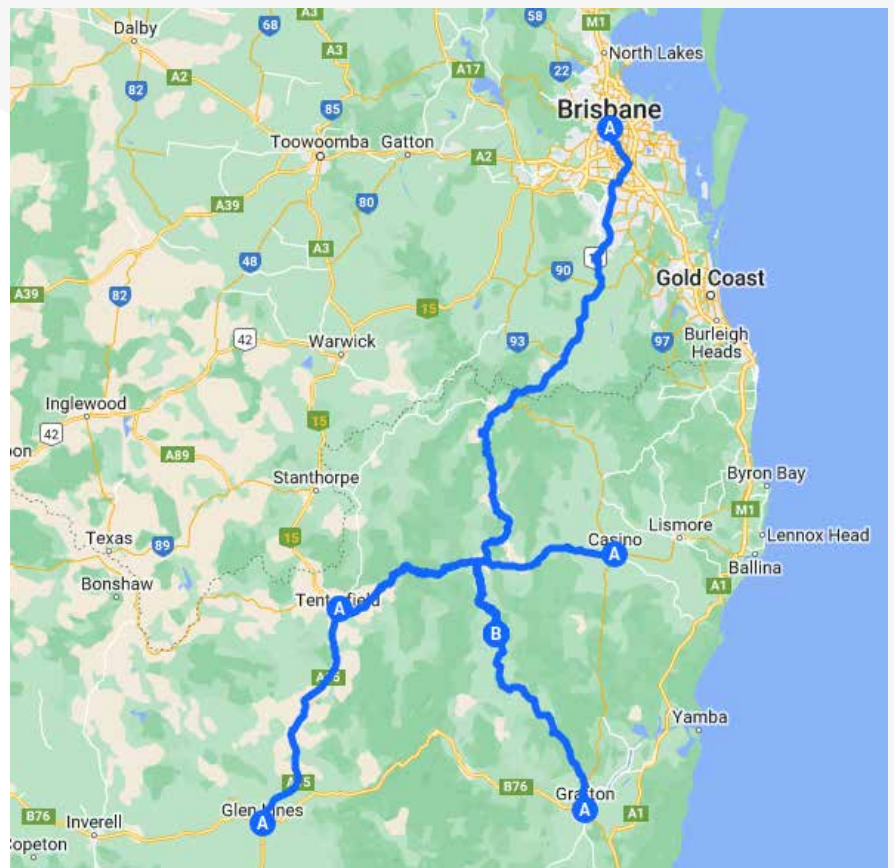
Yulgilbar Airport

Baryulgil airfield is a private non licensed airfield located on Yulgilbar Station at Baryulgil NSW. The Airfield is fenced; located in a Cattle Paddock, the surface is sealed, the direction is approximately 150/330 degrees, and there is an uphill rise to the South East of approximately 20 meters over the 1600 metre length of the Airfield.

Elevation is approximately 450 AMSL.

Position: S29.13.3 E152.37.5.

- Please contact the station prior to landing (24 hours notice) so arrangements can be made to meet planes on arrival and transport passengers to the sale.
- There are daily commercial flights to Grafton and Lismore airports by Rex Airlines.
- A number of motels are located in Tenterfield, Casino, Lismore and Grafton (prior booking recommended)
- Travel time by car to Yulgilbar Station (Broadwater Sales Complex)
 - Casino - 1 hour
 - Tenterfield - 1hour 30 minutes
 - Grafton -1 hour 15 minutes



How to Register and Bid on AuctionsPlus

1

Go to www.auctionsplus.com.au to register at least 48 hours before the sale.

2

Select “**Sign Up**” in the top right hand corner.

3

Fill out your name, mobile number, email address and create a password.

4

Go to your emails and confirm the account.

5

Return to AuctionsPlus and log in.

6

Select “**Dashboard**” and then select “**Request Approval to Buy**”.

7

Fill in buyer details and once completed go back to Dashboard.

8

Complete buyer induction module (approx. 30 minutes).

9

AuctionsPlus will email you to let you know that your account has been approved.

10

Log in on sale day and connect to auction.

11

Bid using the two-step process – unlock the bid button and bid at that price.

12

If you are successful, the selling agent will contact you post sale to organise delivery and payment.

For more information please contact us on:

Phone: (02) 9262 4222

Email: info@auctionsplus.com.au



**70 years of Breeding
Santa Gertrudis Cattle,
1954 to 2024.**



Yulgilbar Station (since 1840)

Celebrating 184 years Pastoral Settlement



Yulgilbar Station was founded in 1840 by Edward Ogilvie as a 200 000 acre sheep station. The run selected comprised the most fertile region of the Clarence River valley; in North Eastern New South Wales encompassing over 80 kilometers of the river. The property was owned by the Ogilvie family until being sold in 1926 to a syndicate of the Morrissey brothers and silent partner Tom Baillieu.

Sam Hordern was subsequently invited to join the syndicate, ultimately purchasing Yulgilbar in its entirety in 1949. Sam was a foundation director of King Ranch Australia and the first President of the Santa Gertrudis Australia Association.



Sam Hordern's daughter, Sarah and husband, Baillieu Myer, inherited Yulgilbar upon Sam's untimely death in 1960. Today the property still remains under ownership of Sarah and Baillieu Myer.

What's in a name:

Yulgilbar means 'Place of many (or little) fishes.'

Yulgilbar is a heritage listed property of natural beauty and of environmental significance.

Yulgilbar contains much historical infrastructure, dating back to 1840. The station is also characterized by its impressive permanent water systems. Yulgilbar was proclaimed a Flora and Fauna reserve in 1971.

Farming: 4500 acres is currently farmed, growing summer and winter cash and fodder crops, supplying the feed requirements of the Station as well as running a significant Hay and Fodder sales business thru "Toooloonki Division".

A herd of 5000 Santa Gertrudis cattle are now run on Yulgilbar. Yulgilbar weaner's have long been renowned for their constitution and doing ability and, in particular, their ability to gain weight under favorable conditions. These steers have sold previously from Victoria to central Queensland with excellent results.

The first Santa Gertrudis bulls were introduced to Yulgilbar Station in 1953 over Durham Shorthorn type cattle with a Devon influence. 16 King Ranch bulls dominated the early history of Yulgilbar.

Other notable sires in the early history of Yulgilbar included bulls from Bolinda vale, sister stud – Elgee Park, Robenlea, Murrumbo, Yarrowonga, Winderadeen, Rosevale, and The Lakes. These bulls all contributed to the development of the stud, along with numerous Station bred sires. Recognized cow lines in the Yulgilbar herd included the "Gold" family going back to a "Glen Prairie" cow (Kirkby family).

A major expansion of the stud has evolved over the last 10 years. 500 Stud females are currently single sire mated to elite Poll Santa Gertrudis sires.

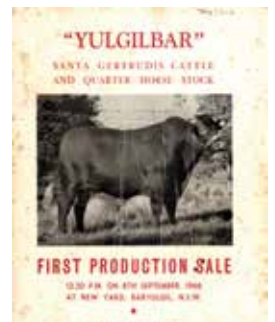
Since 2002, 80 outside bred additional stud sires have been introduced to the Yulgilbar gene pool. A significant addition to Yulgilbar genetics eventuated in 2008 with the landmark purchase of "The Lakes" Santa Gertrudis stud (owned by the Bolster family). The female portion of this widely recognized and established stud were purchased; marking the merger of these 2 major stud operations. Yulgilbar now stands as the largest Santa Gertrudis stud cattle operation in NSW.

Significant AI programs are also conducted utilizing the best available genetics. An Australian record at auction (\$80 000) was paid in 2007 for Warena Sahara (poll). This record stood until 2015.

Waco Queenslander (P) was purchased for the then record price in 2021 \$110,000 while the Australian semen rights were purchased in the \$197,000 (AUD) record breaking American Santa Gertrudis bull - Red Doc Never Better (P).

Murgona Nightcap N43 (P) was recently purchased for \$105k from the Murgona stud at the Heart land sale in Roma 2021.

The newest addition added to the sire battery is Cardona West Germany, purchased for \$100,000 from Cardona Santa Gertrudis, Blackwater QLD.



Yulgilbar Santa Gertrudis Stud History

The Station and Stud were managed for many years by the Rogan family. Allan Rogan was manager of Yulgilbar from 1964 - 1987. He was largely responsible for the early success of the stud. The first annual production sale at Yulgilbar was conducted in September 1966.

These annual production sales continued until the beef crash in 1974. These sales comprised the sale of bulls, females, steers and significant numbers of Quarter Horse. Post 1974 Yulgilbar sold on a regular basis at the Summer-land Santa Gertrudis sale in Casino.

Sam Hordern, King Ranch, and others were also responsible for introducing Quarter Horses to Australia. Today Yulgilbar Quarter Horse stud is run from Elgee Park on the Mornington Peninsula in Victoria.

Peter Rogan managed Yulgilbar from 1988-1996. Gail and Blythe Richie managed Yulgilbar from 1996-2001. Rob and Lorraine Sinnamon 2002 to 2021. And currently under the new management of Brett and Lucy Ellem.

Yulgilbar believe many breeds of cattle can benefit from the introduction of hybrid vigor through the use of Santa Gertrudis sires. To this end Yulgilbar also breed a number of Santa cows to Angus, Hereford and Charolais to demonstrate the benefit of crossbreeding with Santa Gertrudis. In recent times Yulgilbar has moved to the vertical integration of a significant portion of its product.

YULGILBAR STAFF

Yulgilbar Station is fortunate to have an excellent team responsible for the management of the operation. Thank you for the contribution made by all these people.

Yulgilbar has paddock sale bulls available year round.

SHOWS

We are proud of our record in recent years exhibiting many stud cattle show champions up and down the East Coast of Australia. We have now consolidated our showing to focus on the commercial reality of our business. We are particularly proud of winning the Santa Gertrudis Australia Association National Steer trophy for 9 of the past 11 years.

We believe comparison of the end result is important and gives us an indication of how industry relevant our cattle are in the market place.

We have made a "commercial practice "of showing and then selling "different "steers at each competition. Yulgilbar has been also involved with the NSW D.P.I.; MLA and CRC in recent research and validation work including validation of the "Feedlot Calculator, CRC "Age to Puberty" scanning; and polled verification testing.



Brett, Lucy, Hunter, Jewel and Dusty Ellem.

2023-2024

Show Results

Ekka Results 2023

- Yulgilbar Tiffany&CO Reserve Champion Female
- Sires Progeny 1st Yulgilbar Quicksilver placed 2nd in the AAM investment Group point achiever award.

North Coast National Show 2023

Interbreed Supreme Champion Bull

- Yulgilbar Sidney

Grand Champion Bull

- Yulgilbar Sidney

Junior Champion Bull

- Yulgilbar Tick Tick Boom

Senior Champion Bull

- Yulgilbar Sidney

Reserve junior champion Female

- Yulgilbar Tinkerbell

Supreme champion all breeds Breeders Group
(Yulgilbar Sidney-Yulgilbar Sweetpea-Yulgilbar Tinkerbell)

Santa Gertrudis Youth Camp 2024

- Champion Male Yulgilbar Tick Tick Boom
- Reserve Champion Male Yulgilbar Timberland
- Champion Female Yulgilbar Tiffany & Co
- Grand Champion Handler Hunter Ellem.







Steer Highlights

2023

Sydney Royal Beef Challenge

Champion Pen
100 Day Export Class

Champion Animal
70 Day Domestic Class

Reserve Champion
100 Day Export Class

Winner
100 Day Export Pen Profit and Loss

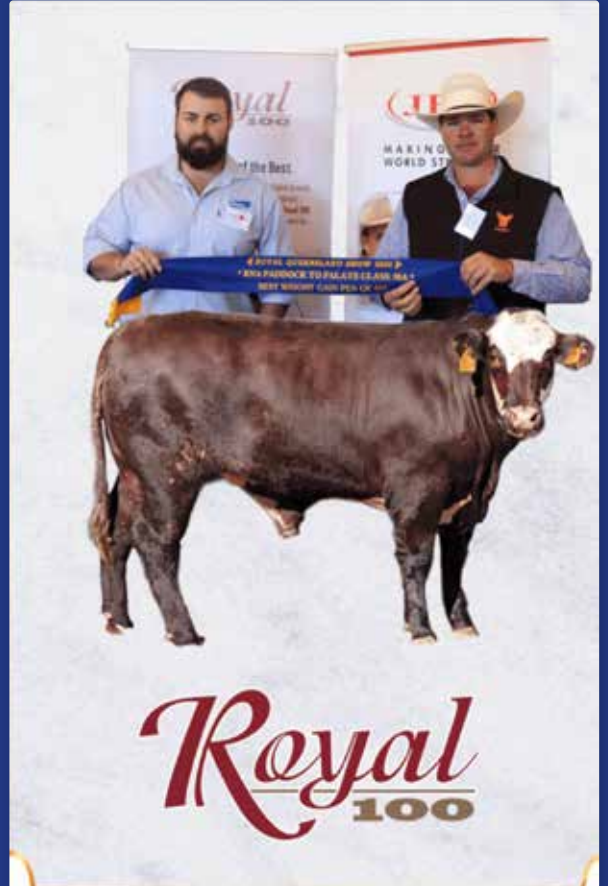
Winner
100 Day Export Pen
Carcass Judging

Winner
100 Day Export Pen
Feedlot Performance

RNA Paddock to Palate

3rd Place Class 40 C 100 Day Export HGP Free

“Winner of the S.G.B.A Eddie Hackman Steer Trophy”



Cattle Selection and Santa Gertrudis Breedplan

CATTLE SELECTION

Yulgilbar advocates balanced assessment criteria for cattle selection. This combines visual appraisal for structural soundness, temperament and overall conformation; prudent use of raw measurement data - e.g. frame score, weight, daily weight gain, actual scrotal measurements, eye muscle area and fat scans. Selection of extremes should always be treated with caution. Yulgilbar supports the Santa Gertrudis classification system. Santa Gertrudis group breed plan provides estimates of breeding values that are also of assistance in making choices. Single trait selection for any characteristic is believed to be dangerous and lacks balance in any breeding program.

Use of a combination of the many available "tools" for selection in the industry today is valuable and allows the discerning cattle person to be far more informed about their livestock selections than previously before.

Please note bulls marked as Herd Bulls in the catalogue were not registered or eligible for classification. Many of these bulls would classify under breed standards, but due to not being registered are not presented for classification.

Yulgilbar now for a number of years has been utilising Parent Verification through DNA to ensure integrity in the data we provide. We are also excited that now with genomic enhanced EBV data being incorporated in Santa Gertrudis breedplan, more information will be available to the industry in assisting to make informed breeding decisions. We look forward to further utilising this data as its accuracies grow.

- This Year's Sale Bulls have been tested for the Horn Poll Test (developed by Beef CRC and commercialised by Phizer). Results will be available on sale day and on our web site once available.
- Santa Gertrudis Group Breedplan figures supplied are July 2022 group run.

FERTILITY

- All females, stud and commercial are pregnancy tested annually and all empty females are fattened and sold for slaughter
- Sale bulls are semen tested and soundness evaluated
- Sale bulls have been morphology tested
- Sale bulls are tested negative for Persistently Infected carriers of Pesti-Virus
- Herd sires are semen tested annually.

HornPoll



Understanding the EBVs, Selection Indexes and Accuracy.

EBVS

An animal's breeding value is its genetic merit, half of which will be passed on to its progeny. While we will never know the exact breeding value, for performance traits it is possible to make good estimates. These estimates are called Estimated Breeding Values (EBVs).

In the calculation of EBVs, the performance of individual animals within a contemporary group is directly compared to the average of other animals in that group. A contemporary group consists of animals of the same sex and age class within a herd, run under the same management conditions and treated equally. Indirect comparisons are made between animals reared in different contemporary groups, through the use of pedigree links between the groups.

EBVs are expressed in the units of measurement for each particular trait. They are shown as +ive or -ive differences between an individual animal's genetics difference and the genetic base to which the animal is compared. For example, a bull with an EBV of +50 kg for 600-Day Weight is estimated to have genetic merit 50 kg above the breed base of 0 kg. Since the breed base is set to an historical benchmark, the average EBVs of animals in each year drop has changed over time as a result of genetic progress within the breed.

The absolute value of any EBV is not critical, but rather the differences in EBVs between animals. Particular animals should be viewed as being "above or below breed average" for a particular trait.

Whilst EBVs provide the best basis for the comparison of the genetic merit of animals reared in different environments and management conditions, they can only be used to compare animals analysed within the same analysis. Consequently, Santa Gertrudis BREEDPLAN EBVs cannot be validly compared with EBVs for any other breed.

EBVs are published for a range of traits covering fertility, calving ease, milking ability, growth, and carcase merit. When using EBVs to assist in selection decisions it is important to achieve a balance between the different groups of traits and to place emphasis on those traits that are important to the particular herd, markets and environment.

One of the advantages of having a comprehensive range of EBVs is that it is possible to avoid extremes in particular traits and select for animals with balanced overall performance.

BIRTH WEIGHT EBV (KG)

is based on the measured birth weight of progeny, adjusted for dam age. The lower the value the lighter the calf at birth and the lower the likelihood of a difficult birth. This is particularly important when selecting sires for use over heifers.

200-DAY GROWTH EBV (KG)

is calculated from the weight of progeny taken between 80 and 300 days of age. Values are adjusted to 200 days and for age of dam. This EBV is the best single estimate of an animal's genetic merit for growth to early ages.

400-DAY WEIGHT EBV (KG)

is calculated from the weight of progeny taken between 301 and 500 days of age, adjusted to 400 days and for age of dam. This EBV is the best single estimate of an animal's genetic merit for yearling weight.

600-DAY WEIGHT EBV (KG)

is calculated from the weight of progeny taken between 501 and 900 days of age, adjusted to 600 days and for age of dam. This EBV is the best single estimate of an animal's genetic merit for growth beyond yearling age.

MATURE COW WEIGHT EBV (KG)

is based on the cow weight when the calf is weighed for weaning, adjusted to 5 years of age. This EBV is an estimate of the genetic difference in cow weight at 5 years of age and is an indicator of growth at later ages and potential feed maintenance requirements of the females in the breeding herd. Steer breeders wishing to grow animals out to a larger weight may also use the Mature Cow Weight EBV.

MILK EBV

(kg) is an estimate of an animal's milking ability. For sires, this EBV indicates the effect of the daughter's milking ability, inherited from the sire, on the 200-day weights of her calves. For dams, it indicates her milking ability.



SCROTAL SIZE EBV (CM)

is calculated from the circumference of the scrotum taken between 300 and 700 days of age and adjusted to 400 days of age. This EBV is an estimate of an animal's genetic merit for scrotal size. There is also a small negative correlation with age of puberty in female progeny and therefore selection for increased scrotal size will result in reduced age at calving of female progeny.

CARCASE WEIGHT EBV (KG)

is based on abattoir carcass records and is an indicator of the genetic differences in carcass weight at the standard age of 650 days.

EYE MUSCLE AREA EBV (SQ CM)

is calculated from measurements from live animal ultrasound scans and from abattoir carcass data, adjusted to a standard 300 kg carcass. This EBV estimates genetic differences in eye muscle area at the 12/13th rib site of a 300 kg dressed carcass.

More positive EBVs indicate better muscling on animals. Sires with relatively higher Eye Muscle Area EBVs are expected to produce better muscled and higher percentage yielding progeny at the same carcass weight than will sires with lower Eye Muscle Area EBVs.

RIB FAT AND RUMP FAT EBVS (MM)

are calculated from measurements of subcutaneous fat depth at the 12/13 rib site and the P8 rump site (from live animal ultrasound scans and from abattoir carcasses) and are adjusted to a standard 300 kg carcass. These EBVs are indicators of the genetic differences in fat distribution on a standard 300 kg carcass.

Sires with low, or negative, fat EBVs are expected to produce leaner progeny at any particular carcass weight than will sires with higher EBVs.

RETAIL BEEF YIELD EBV (%)

indicates genetic differences between animals for retail yield percentage in a standard 300 kg carcass. Sires with larger EBVs are expected to produce progeny with higher yielding carcasses.

INTRAMUSCULAR FAT EBV (%)

is an estimate of the genetic difference in the percentage of intramuscular fat (marbling) at the 12/13th rib site in a 300 kg carcass. Depending on market targets, larger more positive values are generally more favourable.

SELECTION INDEXES

Santa Gertrudis selection indexes are calculated for two market specifications, namely, Domestic and Export. These Indexes relate to typical commercial herds targeting these specifications.

Indexes are reported as an EBV, in units of relative earning capacity (\$'s) for a given market. They reflect both the short-term profit generated by a sire through the sale of his progeny, and the long-term profit generated by his daughters in a sustainable cow herd, if a proportion of heifers are retained for breeding.

The Indexes are derived using Breed Object technology. More information on this technology is available from the Breed Object web site.

DOMESTIC PRODUCTION INDEX (\$)

Estimates the genetic differences between animals in net profitability per cow joined for an example self replacing commercial herd (run in a temperate environment) producing steers for the Domestic trade. This Index assumes that the steer progeny are pasture grown and finished and marketed at 500 kg live weight (280 kg HSCW and 12 mm P8 fat depth) at 16 months of age. Daughters are retained for breeding. More information is available on the EBV weightings for the Domestic Production Index.

EXPORT PRODUCTION INDEX (\$)

Estimates the genetic differences between animals in net profitability per cow joined for an example commercial herd (run in a sub-tropical environment) producing steers for the Export trade. This Index assumes that the steer progeny are pasture grown and finished and are marketed at 620 kg live weight (340 kg HSCW and 15 mm P8 fat depth) at 28 months of age. Daughters are retained for breeding. More information is available on the EBV weightings for the Export Production Index.

Note that \$Index Values for individual animals are sensitive to the assumptions used in the BreedObject analysis to calculate the relevant selection index.

Santa Gertrudis Breedplan

ACCURACY

Accuracy (%) is based on the amount of performance information available on the animal and its close relatives - particularly the number of progeny analysed. Accuracy is also based on the heritability of the trait and the genetic correlations with other recorded traits. Hence accuracy indicates the "confidence level" of the EBV. The higher the accuracy value the lower the likelihood of change in the animal's EBV as more information is analysed for that animal or its relatives. Even though an EBV with a low accuracy may change in the future, it is still the best estimate of an animal's genetic merit for that trait. As more information becomes available, an EBV is just as likely to increase in value, as it is to decrease.

Accuracy values range from 0-99%. The following guide is given for interpreting accuracy:

ACCURACY RANGE	INTERPRETATION
LESS THAN 50%	Low accuracy. EBVs are preliminary and could change substantially as more performance information becomes available.
50 - 74%	Medium accuracy, usually based on the animal's own records and pedigree.
75 - 90%	Medium-high accuracy. Some progeny information included. EBVs may change with addition of more progeny data.
MORE THAN 90%	High accuracy estimate of the animal's true breeding value.

As a rule, animals should be compared on EBVs regardless of accuracy. However, where two animals have similar EBVs the one with higher accuracy could be the safer choice, assuming other factors are equal.

For further information please contact Tropical Beef Technology Services or Santa Gertrudis BREEDPLAN



EBV Quick Reference for Yulgilbar Bull Sale

LOT No.	Animal Society ID	Birth	200	400	600	Mat Cow	SS	DTC	Carcase	EMA	Rib	Rump	RBV	IMF
Lot 1	YUL22MT4	-	-	-	-	-	-	-	-	-	-	-	-	-
Lot 2	YUL22MT40	-	-1	-2	-1	4	0.4	-	-	-	-	-	-	-
Lot 3	YUL22MT42	-0.1	2	5	4	13	0.6	1.1	4	0.7	-0.8	-1.5	0.7	0
Lot 4	YUL22MT102	3.8	27	37	49	56	1.7	5.8	19	4	0.9	0.5	0.3	0.2
Lot 5	YUL22MT156	3.3	20	30	40	54	0.3	4.1	17	3	-0.1	-0.7	1.1	-0.1
Lot 6	YUL22MT120	2.8	18	20	34	31	1.2	1	8	4	1.9	1.9	0.8	0.2
Lot 7	YUL22MT94	1.4	10	19	21	23	0.1	0.9	6	2.1	0.9	0.6	0.2	0.4
Lot 8	YUL22MT104	3.1	19	33	38	49	0.7	7.6	18	2.9	-0.5	-1.3	0.9	-0.1
Lot 9	YUL22MT108	3.3	17	25	34	42	0.6	6.5	15	2.1	-1	-2	0.9	-0.1
Lot 10	YUL22MT98	3.4	17	24	30	33	0.1	6.5	10	1.5	0.3	0	0	0.2
Lot 11	YUL22MT110	2.1	14	22	25	29	0.8	6.8	13	3	0	-0.7	1.3	-0.3
Lot 12	YUL22MT130	2.8	13	25	34	37	0.1	6.1	13	1.3	-0.7	-1.4	0.3	0.1
Lot 13	YUL22MT92	3.9	25	30	52	63	0.7	5.1	18	4.2	0.8	0.3	1.3	-0.3
Lot 14	YUL22MT2	-	8	13	18	17	-	-	-	-	-	-	-	-
Lot 15	YUL22MT68	4.6	28	45	62	70	1	-	24	4.2	0.6	0.4	-	-0.2
Lot 16	YUL22MT132	3.6	25	38	54	67	1	-	21	4	-0.2	-0.5	-	0.1
Lot 17	YUL22MT84	0.7	7	12	12	11	1.4	-	4	1.9	0.7	0.5	-	0.3
Lot 18	YUL22MT150	2.8	17	21	22	20	1.4	6.4	9	2.7	1	0.7	0.5	-0.2
Lot 19	YUL22MT182	0	3	10	7	10	0.1	1.9	4	2.2	0.7	0.4	0.7	0
Lot 20	YUL22MT96	2.3	13	16	23	24	1.2	0.8	8	2	1.2	0.7	0.4	0.1
Lot 21	YUL22MT58	-	12	11	16	-	-	-	-	-	-	-	-	-
Lot 22	YUL22MT46	-0.1	0	5	5	11	1.2	-2	3	0.7	-0.5	-1.3	0.6	0.3
Lot 23	YUL22MT64	1.8	10	14	20	27	1.4	0.2	6	1.3	0.4	-0.3	0.7	0
Lot 24	YUL22MT88	0.8	8	21	26	32	0.8	-	12	-	-	-	-	-
Lot 25	YUL22MT128	-0.1	2	10	11	20	-0.5	-	10	2	-1.6	-2.3	1.1	-0.1
Lot 26	YUL23MT216	-	-	-	-	-	-	-	-	-	-	-	-	-
Lot 27	YUL22MT178	0	6	16	18	9	1	-	1	2.4	0.9	0.8	0	0.4
Lot 28	YUL22MT172	-	-	-	-	-	-	-	-	-	-	-	-	-
Lot 29	YUL22MT126	-	-	-	-	-	-	-	-	-	-	-	-	-
Lot 30	YUL22MT166	2.2	10	11	22	24	-0.1	-	7	1.4	0	-0.2	-	-0.1
Lot 31	YUL22MT330	-	-	-	-	-	-	-	-	-	-	-	-	-
Lot 32	YUL22MT270	-	-	-	-	-	-	-	-	-	-	-	-	-
Lot 33	YUL22MT334	-	-	-	-	-	-	-	-	-	-	-	-	-
Lot 34	YUL22MT300	-	-	-	-	-	-	-	-	-	-	-	-	-
Lot 35	YUL22MT284	-	-	-	-	-	-	-	-	-	-	-	-	-
Lot 36	YUL22MT116	3.1	18	35	40	54	0.1	6.3	19	2.2	-0.2	-0.7	0.3	0
Lot 37	YUL22MT78	-	-	-	-	-	-	-	-	-	-	-	-	-
Lot 38	YUL22MT148	1.9	9	0	9	7	0.2	1.1	0	0.6	1.4	1.3	0	0
Lot 39	YUL22MT144	1	6	4	6	7	1	-	2	1.3	0.3	0	-	0.3
Lot 40	YUL22MT69	1.5	9	8	11	20	-0.3	5.2	8	2	-0.6	-1.4	1	-0.1
Lot 41	YUL22MT180	-	-	-	-	-	-	-	-	-	-	-	-	-
Lot 42	YUL22MT218	1.5	13	20	19	27	0.1	-	6	2.2	1.4	1.6	-	0.6
Lot 43	YUL23MT248	-	-	-	-	-	-	-	-	-	-	-	-	-
Lot 44	YUL22MT56	1.7	10	19	27	27	-0.8	-	9	2	-1	-1.7	0.4	0.1
Lot 45	YUL22MT38	0.7	5	5	11	20	0.1	-	8	0.7	-1.7	-2.4	0.9	-0.4
Lot 46	YUL22MT70	-	-	-	-	-	-	-	-	-	-	-	-	-
Lot 47	YUL22MT10	1.7	12	18	23	29	-	-	9	-	-	-	-	-
Lot 48	YUL22MT234	-	-	-	-	-	-	-	-	-	-	-	-	-
Lot 49	YUL22MT314	-	-	-	-	-	-	-	-	-	-	-	-	-
Lot 50	YUL22MT264	-	-	-	-	-	-	-	-	-	-	-	-	-
Lot 51	YUL22MT272	-	-	-	-	-	-	-	-	-	-	-	-	-
Lot 52	YUL22MT310	-	-	-	-	-	-	-	-	-	-	-	-	-
Lot 53	YUL22MT226	-	-	-	-	-	-	-	-	-	-	-	-	-
Lot 54	YUL22MT188	-0.7	-4	-6	-9	-3	-0.1	-	-4	-0.2	-0.6	-0.9	-	0.3
Lot 55	YUL22MT24	-1.3	-7	-12	-18	-13	0.5	-	-5	-0.7	-0.8	-1.3	-	-0.1
Lot 56	YUL22MT154	-1.2	-5	-5	-6	-5	0	-	-3	1	-0.3	-0.6	-	0.1
Lot 57	YUL22MT20	-0.4	-2	-3	-6	-4	0.4	-	-2	0.2	0.2	-0.1	0.3	0.1
Lot 58	YUL22MT312	-	-	-	-	-	-	-	-	-	-	-	-	-
Lot 59	YUL22MT224	-	-	-	-	-	-	-	-	-	-	-	-	-
Lot 60	YUL22MT304	-	-	-	-	-	-	-	-	-	-	-	-	-
Lot 61	YUL22MT34	-	-1	3	-2	4	0.6	-	1	-	-0.3	-0.7	-	0.3
Lot 62	YUL22MT296	-	-	-	-	-	-	-	-	-	-	-	-	-
Lot 63	YUL22MT338	-	-	-	-	-	-	-	-	-	-	-	-	-
Lot 64	YUL21MS68	-	-	-	-	-	-	-	-	-	-	-	-	-
Lot 65	YUL21MS166	2.1	18	27	40	49	1.1	4.2	17	3.7	0.6	0.3	0.8	0
Lot 66	YUL21MS212	2.1	12	15	22	26	0.8	-	9	1.5	0.5	0	0.4	0
Lot 67	YUL21MS260	-	-	-	-	-	-	-	-	-	-	-	-	-
Lot 68	T290	-	-	-	-	-	-	-	-	-	-	-	-	-
Lot 69	T294	-	-	-	-	-	-	-	-	-	-	-	-	-
Lot 70	T328	-	-	-	-	-	-	-	-	-	-	-	-	-
Lot 71	T356	-	-	-	-	-	-	-	-	-	-	-	-	-
Lot 72	YUL22FT169	2.6	17	21	26	35	0.8	-	10	2.8	0.8	0.4	-	0.1
Lot 73	YUL21FS203	-	-	-	-	-	-	-	-	-	-	-	-	-
Lot 74	YUL21FS213	-	-	-	-	-	-	-	-	-	-	-	-	-
Lot 75	YUL21FS201	-	-	-	-	-	-	-	-	-	-	-	-	-

EBV KEY	Top 1% Breed	Top 5% Breed	Top 10% Breed	Top 15% Breed	Top 20% Breed
---------	--------------	--------------	---------------	---------------	---------------



2024 Stud Sires



Red Doc Never Better ET 7457

SIRE: RDF SANCHO'S NEVER BEFORE 1136

DAM: RDF BONITA 8017

200	400	600	MAT COW	MILK	SS	DOM	EX	200	400	600	MAT COW	MILK	SS



Waco Queenslander Q384 (PS)

SOCIETY ID: WAC19MQ384

SIRE: WACO ADDICTIVE F1090 (PS)

DAM: YARRAWONGA H275 (P)

200	400	600	MAT COW	MILK	SS	DOM	EX	200	400	600	MAT COW	MILK	SS



Yulgilbar Patriot P034 (P)

SOCIETY ID: YULI8MP34

SIRE: MOONGANA KARACHI 2724 (P)

DAM: YULGILBAR K109 (P)

200	400	600	MAT COW	MILK	SS	DOM	EX	200	400	600	MAT COW	MILK	SS



Hardigreen Park Vice Roy N44 (P)

SOCIETY ID: HAR17MN44

SIRE: YARRAWONGA FORMIDABLE L872 (P)

DAM: HARDIGREEN PARK L13 (P)

200	400	600	MAT COW	MILK	SS	DOM	EX	200	400	600	MAT COW	MILK	SS
12	19	25	26	4	1.4	16	17	71	74	73	64	30	65



Waco Pioneer P110 (P)

SOCIETY ID: WAC18MP110

SIRE: YARRAWONGA SALVADOR K306 (PS)

DAM: WACO H253

200	400	600	MAT COW	MILK	SS	DOM	EX	200	400	600	MAT COW	MILK	SS
14	22	31				10	11	55	58	57			



Glenn Oaks Mombasa M96 (P)

SOCIETY ID: GLO17MM96

SIRE: WACO ELAND J1402 (P)

DAM: WACO G153 (P))

200	400	600	MAT COW	MILK	SS	DOM	EX	200	400	600	MAT COW	MILK	SS
12	16	22						40	42	41			



2024 Stud Sires



Yulgilbar Nevada N40 (AI) (P)

SOCIETY ID: YUL17MN40

SIRE: 777 VEGAS 411 (P)

DAM: YULGILBAR K145

200	400	600	MAT COW	MILK	SS	DOM	EX	200	400	600	MAT COW	MILK	SS



Dunlop Unguarded Q162 (P)

SOCIETY ID: DNL19MQ162

SIRE: VALLEYVIEW LUKE 1546 (P)

DAM: DUNLOP H69

200	400	600	MAT COW	MILK	SS	DOM	EX	200	400	600	MAT COW	MILK	SS



Tookey Creek Malta (P)

SOCIETY ID: TOO16MM48

SIRE: WACO EINSTEIN K808 (P)

DAM: TOOKEY CREEK J59 (P)

200	400	600	MAT COW	MILK	SS	DOM	EX	200	400	600	MAT COW	MILK	SS
8	15	25	28		-0.3	11	13	80	83	83	72		



Cardona Patterson P53 (P)

SOCIETY ID: CAR15MP53

SIRE: CARDONA MAMBO M33 (P)

DAM: CARDONA FIREFLY M280 (PS)

200	400	600	MAT COW	MILK	SS	DOM	EX	200	400	600	MAT COW	MILK	SS
24	36	44	57	-8	1.5	29	26	88	86	87	75	43	46



Yulgilbar Quiksilver Q144 (PP)

SOCIETY ID: YULI9MQ144

SIRE: CARDONA PATTERSON P53 (P)

DAM: YULGILBAR J85 (P)

200	400	600	MAT COW	MILK	SS	DOM	EX	200	400	600	MAT COW	MILK	SS



Murgona Nightcap

SOCIETY ID: MRG20MN43

SIRE: WARENDA LENNOX L32 (P)

DAM: MURGONA FELICIA F55

200	400	600	MAT COW	MILK	SS	DOM	EX	200	400	600	MAT COW	MILK	SS



Future Sires



Dunlop Warratah S306 (PS)

SOCIETY ID: DNL21MS306

SIRE: BULLAMAKINKA P184 (PS)

DAM: DUNLOP N263



Watasanta Stetson 2796 (PS)

SOCIETY ID: WAT20M2796

SIRE: YARRAWONGA IRONMAN P914 (PP)

DAM: WATSANTA 1525



Jamar Stuntman S16 (AI) (P)

SOCIETY ID: JMR21MS16

SIRE: GLENN OAKS JIBBA J28 (P)

DAM: PAMPOOLA 732A



YULGILBAR SIDNEY S28 (P)

SOCIETY ID: YUL21MS28

SIRE: HARDIGREEN PARK VICE ROY N44 (P)

DAM: YULGILBAR K087 (P)



Darr Creek Serengeti S100 (P)

SOCIETY ID: DRC20MS100

SIRE: Dunlop Taj P484 (P)

DAM: Oakdale Natalie 2032



Diamond H Yarraman (P)

SOCIETY ID: DIA2IMY064

SIRE: YARRAWONGA P918 (PP)

DAM: DIAMOND H R322 (P)



Cardona West Germany W205 (P)

SOCIETY ID: CAR22MW205

SIRE: CARDONA TENNESSEE T227 (P)

DAM: CARDONA LUCINDA T148 (P)



Rosevale Tungsten T1052 (P)

SOCIETY ID: ROS22MT1052

SIRE: ROSEVALE MAJOR Q648 (PP)

DAM: WIGHTFIELDS HOPE J10 (P)



Impact Sires



Cardona Patterson P53 (P)

Cardona Patterson was purchased in 2016 and is now at the age of 10 years he is still active in the stud today.

Patterson displays exceptional breed character, skin type and is structurally sound which has carried him through for 8 years of working life to date.

Patterson has almost 250 registered progenies to his name, these include natural, AI and ET mating. Many of Patterson's progeny have gone on to produce in multiple studs across the country and overseas.

His genetic strength is proven within the Yulgilbar Stud as both his sons and daughters play a huge role in our breeding program.



Warenda Sahara S200

Warenda Sahara was purchased in 2007 for a record breaking \$80,000, he was a homozygous Poll sire with industry leading EBVs and pedigree to match.

He has become one of the most influential sires of all time within the Yulgilbar Stud and has also left a positive impact in the Santa Gertrudis Breed. He has been used heavily for AI and natural mating and now has 556 registered progenies to his name.

Sahara genetics continue to play a big part of our current breeding programs with his daughters, granddaughters and great granddaughters being some of the leading females currently in the Yulgilbar Stud continuously performing year in year out.

2023 Sale Highlight



Lot 3 Yulgilbar Springsteen (PP)

Sold for \$80,000 to Craig & Racheal
(Cardona Santa Gertrudis) Blackwater QLD



LOT 1**CLASSIFIED S**

Yulgilbar Tick Tick Boom T004 (P)

Society ID: YUL22MT4**Born:** 1/7/2022

26 Months

Male



CARDONA MAMBO M33 (P)
 CARDONA PATTERSON P53 (P)
 CARDONA FIREFLY M280 (PS)
SIRE: YULGILBAR QUIKSILVER Q144 (PP)
 THE LAKES P1 (AI)
 YULGILBAR J85 (P)
 Unavailable

 SUJO FIRST CLASS (AI)(P)
 BENELKAY JUMBO JIM J002 (PP)
 BENELKAY JEWEL 1529 (P)
DAM: YULGILBAR N205 (P)
 ROSEVALE NODDY D216 (PS)
 YULGILBAR F181 (P)
 THE LAKES P206 (AI)(P)

Weight

ADG

Scrotal

Fat P8

Rib

Fat Rump

IMF%

EMA

Comment:

Lot 1: The first progeny to be offered by home bred sire Yulgilbar Quicksilver. Tick Tick Boom is a poll sire that has a clean dark red coat type, he displays great length of body, depth of flank and natural thickness with a smooth muscle pattern. He has a strong sirey head and a quiet Temperament, shown in 2023 and 2024 with some success he will be a part of the 2024 Ekka show team.

Purchaser:

\$

LOT 2**CLASSIFIED S**

Yulgilbar Timberland T040 (PS)

Society ID: YUL22MT40**Born:** 29/10/2022

22 Months

Male



WARENDA DENVER (P)
 WARENDA LENNOX L32 (P)
 WARENDA F13 (P)
SIRE: MURGONA NIGHTCAP (P)
 DANGARFIELD STRONGHOLD
 MURGONA FELICIA F55
 MURGONA DELIGHT

 WALMONA SINCLAIR 1212 (P)
 IDEAL NEPTUNE N78 (P)
 IDEAL IRELAND I22
DAM: YULGILBAR Q205 (P)
 MULTIPLE SIRE
 YULGILBAR K217
 MULTIPLE DAM

Weight

ADG

Scrotal

Fat P8

Rib

Fat Rump

IMF%

EMA

Comment:

Lot 2: The first son to be offered by new release sire Murgona Nightcap. Timberland has great sire appeal, he is a powerful upstanding sire with plenty of punch, he has a clean sleek coat and amazing Quiet Nature. Timberland displays natural muscle expression and desirable carcass attributes, he stands on tremendous bone, has strength of spine and a tidy sheath. Timberland is the first Calf from Dam Q205. Shown earlier this year and he will be included in the Ekka 2024 show team.

Purchaser:

\$

LOT 3**CLASSIFIED S**

Yulgilbar Titan T042 (P)

Society ID: YUL22MT42**Born:** 24/11/2022

21 Months

Male



WARENDA DENVER (P)
 WARENDA LENNOX L32 (P)
 WARENDA F13 (P)
SIRE: MURGONA NIGHTCAP (P)
 DANGARFIELD STRONGHOLD
 MURGONA FELICIA F55
 MURGONA DELIGHT

CARDONA MAMBO M33 (P)
 CARDONA PATTERSON P53 (P)
 CARDONA FIREFLY M280 (PS)
DAM: YULGILBAR Q047
 ROSEVALE COMANCHE C20
 YULGILBAR E435
 THE LAKES 067

Weight _____
 ADG _____
 Scrotal _____
 Fat P8 _____
 Rib _____
 Fat Rump _____
 IMF% _____
 EMA _____

Comment:

Lot 3: Another son of Murgona Nightcap, Titan is a stylish young sire with a clean sheath, sirey head and is naturally thick and soft. He stands on good bone and has a quiet nature. Titan is the first calf from Dam Q047 who is out of an incredible Dam Yulgilbar E435 she has had 10 calves and is PTIC at 13 years of age. She is also the Dam of lot 2 from the 2023 sale draft. Shown in 2024 and will be part of the Ekka show team.

Purchaser: _____

\$ _____

LOT 4**CLASSIFIED S**

Yulgilbar Twisted X T102 (PP)

Society ID: YUL22MT102**Born:** 18/10/2022

22 Months

Male



WACO YALE E880 (P)
 YARRAWONGA FORMIDABLE L872 (P)
 YARRAWONGA G143
SIRE: HARDIGREEN PARK VICE ROY N44 (P)
 HARDIGREEN PARK QUO VADIS H118 (PS)
 HARDIGREEN PARK L13 (P)
 HARDIGREEN PARK H27 (P)

SJ HIGH ROLLER 005
 777 VEGAS 411 (P)
 HARRIS FARMS 17/01
DAM: YULGILBAR N035 (AI)(P)
 WARENDA SAHARA (P)
 YULGILBAR K005 (AI)(P)
 YULGILBAR G053

Weight _____
 ADG _____
 Scrotal _____
 Fat P8 _____
 Rib _____
 Fat Rump _____
 IMF% _____
 EMA _____

Comment:

Lot 4: Twisted X is an upstanding large framed homozygous Poll bull, he stands over a lot of ground and has great length and depth of body, very clean through the neck and shoulders with a clean sheath. Dam Yulgilbar N35(777 Vegas USA) has had 4 calves and PTIC recently. This includes Yulgilbar Signature S56 (P) who was the second top priced bull last year.

Purchaser: _____

\$ _____

LOT 5

CLASSIFIED S

Yulgilbar Titanic T156 (PP)

Society ID: YUL22MT156

Born: 31/8/2022

24 Months

Male



CARDONA JACKSON
CARDONA MAMBO M33 (P)
CARDONA JASMINE J180 (P)
SIRE: CARDONA PATTERSON P53 (P)
WACO TREATY (P)
CARDONA FIREFLY M280 (PS)
CARDONA FIREFLY I124

Unavailable
MULTIPLE SIRE
Unavailable

DAM: YULGILBAR K249 (P)
SUJO EAGLE
YULGILBAR E215 (AI)
YULGILBAR Z109

Weight _____
ADG _____
Scrotal _____
Fat P8 _____
Rib _____
Fat Rump _____
IMF% _____
EMA _____

Comment:

Lot 5: Titanic is a homozygous poll sire with volume and sire appeal, this outstanding son of Cardona Patterson displays breed character, length of body, clean dark red coat and has a strong head with a hooded eye. Also has adequate bone, good temperament and structurally sound. Dam Yulgilbar K249 is a consistent producer of quality progenies. Her two previous sons were presented in the top end of the sale draft and her most recent heifer calf weaned Yulgilbar Unconditional U135(full sister) is in the show team.

Purchaser: _____

\$ _____

LOT 6

CLASSIFIED S

Yulgilbar Topgun T120 (PP)

Society ID: YUL22MT120

Born: 7/11/2022

21 Months

Male



CARDONA JACKSON
CARDONA MAMBO M33 (P)
CARDONA JASMINE J180 (P)
SIRE: CARDONA PATTERSON P53 (P)
WACO TREATY (P)
CARDONA FIREFLY M280 (PS)
CARDONA FIREFLY I124

Unavailable
MULTIPLE SIRE
Unavailable

DAM: YULGILBAR M1231 (P)
Unavailable
Unavailable
Unavailable

Weight _____
ADG _____
Scrotal _____
Fat P8 _____
Rib _____
Fat Rump _____
IMF% _____
EMA _____

Comment:

Lot 6: Topgun is a large framed Homozygous poll bull with volume and depth of body. He stands on good bone, has growth for age, a strong topline and will mature into a big bull.

Purchaser: _____

\$ _____

LOT 7

CLASSIFIED S

Yulgilbar Tuxedo T094 (P)

Society ID: YUL22MT94

Born: 23/8/2022

24 Months

S24



SJ HIGH ROLLER 005
777 VEGAS 411 (P)
HARRIS FARMS 17/01

SIRE: YULGILBAR NEVADA N40 (AI)(P)
YULGILBAR GRANGE G032 (PS)
YULGILBAR K145
YULGILBAR Y1237

CARDONA MAMBO M33 (P)
CARDONA PATTERSON P53 (P)
CARDONA FIREFLY M280 (PS)

DAM: YULGILBAR N139 (P)
CARDONA LEGACY L159 (P)
YULGILBAR J47 (P)
YULGILBAR F141 (P)

Weight _____

ADG _____

Scrotal _____

Fat P8 _____

Rib _____

Fat Rump _____

IMF% _____

EMA _____

Comment:

Lot 7: Tuxedo is a poll sire with a lot of eye appeal, He has a dark red sleek coat type, displays length and depth of body and smooth through the neck and shoulders. He is sound and correct with great breed character and a tidy underline. Dam Yulgilbar N139 has 3 registered progeny the first is S045 that is classified and retained in the stud, Tuxedo second and then U003 Yulgilbar Upmarket who is in the show team. "Sired by Yulgilbar Nevada"

Purchaser: _____

\$ _____

LOT 8

CLASSIFIED S

Yulgilbar Theodore T104 (PS)

Society ID: YUL22MT104

Born: 20/10/2022

22 Months

Male



MULTIPLE SIRE
WACO ADDICTIVE F1090 (PS)
WACO D1003 (P)

SIRE: WACO QUEENSLANDER Q384 (PS)
MULTIPLE SIRE
YARRAWONGA H275 (P)
YARRAWONGA X687

CARDONA MAMBO M33 (P)
CARDONA PATTERSON P53 (P)
CARDONA FIREFLY M280 (PS)

DAM: YULGILBAR P069 (P)
WARENDA SAHARA (P)
YULGILBAR J99 (P)
YULGILBAR E031 (AI)

Weight _____

ADG _____

Scrotal _____

Fat P8 _____

Rib _____

Fat Rump _____

IMF% _____

EMA _____

Comment:

Lot 8: Theodore is a poll scur Bull that has growth for age, length of body and natural muscle expression. He is structurally sound, has a strong topline and a clean sheath. Dam Yulgilbar P069 has had 3 calves in 3 years and is PTIC. Her first calf was Lot 5 in the 2023 sale draft Yulgilbar Showman (S022), Theodore T104 is the second calf. A bull calf has recently weaned out of P069 which is apart of the show team; U148. "First son in this year's draft by Waco Queenslander"

Purchaser: _____

\$ _____

LOT 9

CLASSIFIED S

Yulgilbar Tambo T108 (P)

Society ID: YUL22MT108

Born: 6/11/2022

22 Months

Male



MULTIPLE SIRE
WACO ADDICTIVE F1090 (PS)
WACO D1003 (P)
SIRE: WACO QUEENSLANDER Q384 (PS)

MULTIPLE SIRE
YARRAWONGA H275 (P)
YARRAWONGA X687

CARDONA MAMBO M33 (P)
CARDONA PATTERSON P53 (P)
CARDONA FIREFLY M280 (PS)

DAM: YULGILBAR P195 (P)
YARRAWONGA VOLUNTEER (AI)(P)
YULGILBAR J017 (AI)(P)
YULGILBAR F067

Weight
ADG
Scrotal
Fat P8
Rib
Fat Rump
IMF%
EMA

Comment:

Lot 9: Tambo is a poll sire Owned by Jess (Myer) and Jack North. This son of Waco Queenslander is the complete package, structurally sound, soft smooth and thick. He stands on good bone is deep bodied and has a quiet nature. "One not to be overlooked"

Purchaser:

\$

LOT 10

CLASSIFIED S

Yulgilbar Texas T098 (P)

Society ID: YUL22MT98

Born: 2/10/2022

23 Months

Male



MULTIPLE SIRE
WACO ADDICTIVE F1090 (PS)
WACO D1003 (P)
SIRE: WACO QUEENSLANDER Q384 (PS)

MULTIPLE SIRE
YARRAWONGA H275 (P)
YARRAWONGA X687

WACO F268 (ET)
YARRAWONGA DROVER J586 (P)
WACO AUTUMN G1017 (ET)

DAM: YULGILBAR P139 (P)
MULTIPLE SIRE
YULGILBAR H229 (P)
YULGILBAR E279 (P)

Weight
ADG
Scrotal
Fat P8
Rib
Fat Rump
IMF%
EMA

Comment:

Lot 10: Texas is a poll sire that presents natural thickness and has great length of body. He also has a clean tropical coat type, tidy sheath and sound structure. Dam Yulgilbar P139 has had 3 calves in 3 years and PTIC.

Purchaser:

\$

LOT 11**CLASSIFIED S**

Yulgilbar Torpedo T110 (PP)

Society ID: YUL22MT110**Born:** 22/11/2022

21 Months

Male



CARDONA JACKSON
 CARDONA MAMBO M33 (P)
 CARDONA JASMINE J180 (P)
SIRE: CARDONA PATTERSON P53 (P)
 WACO TREATY (P)
 CARDONA FIREFLY M280 (PS)
 CARDONA FIREFLY I124

WACO F268 (ET)
 YARRAWONGA DROVER J586 (P)
 WACO AUTUMN G1017 (ET)
DAM: YULGILBAR L127 (P)
 WARENDA SAHARA (P)
 YULGILBAR H37 (P)
 YULGILBAR E071

Weight _____
 ADG _____
 Scrotal _____
 Fat P8 _____
 Rib _____
 Fat Rump _____
 IMF% _____
 EMA _____

Comment:

Lot 11: Torpedo is homozygous poll, this sire is structurally sound, well balanced and moves freely. He has good length of body and a clean underline, another quality son by Cardona Patterson.

Dam Yulgilbar L127 has 4 registered progeny, 2 classified females retained in the stud and Yulgilbar Shotgun S156 who was sold in last years sale at lot 20.

Purchaser: _____

\$ _____

LOT 12**CLASSIFIED S**

Yulgilbar Townsville T130 (PS)

Society ID: YUL22MT130**Born:** 7/11/2022

21 Months

Male



MULTIPLE SIRE
 WACO ADDICTIVE F1090 (PS)
 WACO D1003 (P)
SIRE: WACO QUEENSLANDER Q384 (PS)
 MULTIPLE SIRE
 YARRAWONGA H275 (P)
 YARRAWONGA X687

WACO F268 (ET)
 YARRAWONGA DROVER J586 (P)
 WACO AUTUMN G1017 (ET)
DAM: YULGILBAR N187 (P)
 YULGILBAR ZAMBIA
 YULGILBAR E123 (P)
 THE LAKES P206 (AI)(P)

Weight _____
 ADG _____
 Scrotal _____
 Fat P8 _____
 Rib _____
 Fat Rump _____
 IMF% _____
 EMA _____

Comment:

Lot 12: Townsville is a poll scur bull that stands on good bone and carries natural thickness, depth of body and softness. Maternal half brother to Yulgilbar Sampson (S046) retained in the stud.

His Grand dam Yulgilbar E123(P) has had 10 recorded calves in 11 years.

Purchaser: _____

\$ _____

LOT 13

CLASSIFIED S

Yulgilbar Tornado T092 (PP)

Society ID: YUL22MT92

Born: 30/11/2022

21 Months

Male



CARDONA JACKSON
 CARDONA MAMBO M33 (P)
 CARDONA JASMINE J180 (P)
SIRE: CARDONA PATTERSON P53 (P)
 WACO TREATY (P)
 CARDONA FIREFLY M280 (PS)
 CARDONA FIREFLY I124

TYNDALE NODDY (AI)(P)
 YULGILBAR COUNCILLOR (AI)(P)
 YULGILBAR Z195

DAM: YULGILBAR K181 (P)
 MULTIPLE SIRE
 YULGILBAR V120
 Unavailable

Weight _____
 ADG _____
 Scrotal _____
 Fat P8 _____
 Rib _____
 Fat Rump _____
 IMF% _____
 EMA _____

Comment:

Lot 13: Tornado is homozygous poll; this bull has plenty of breed character and loose skin. He is a big framed bull with scale, length and depth of body. Travels well and is structurally sound. Dam Yulgilbar K181 has had 6 recorded calves in 6 years.

Purchaser: _____

\$ _____

LOT 14

CLASSIFIED S

Yulgilbar Thor T002 (PS)

Society ID: YUL22MT2

Born: 22/6/2022

26 Months

Male



CARDONA MAMBO M33 (P)
 CARDONA PATTERSON P53 (P)
 CARDONA FIREFLY M280 (PS)
SIRE: YULGILBAR QUIKSILVER Q144 (PP)
 THE LAKES P1 (AI)
 YULGILBAR J85 (P)
 Unavailable

SUJO FIRST CLASS (AI)(P)
 BENELKAY JUMBO JIM J002 (PP)
 BENELKAY JEWEL 1529 (P)

DAM: YULGILBAR N229 (P)
 SUJO EAGLE
 YULGILBAR B65 (AI)
 YULGILBAR W428

Weight _____
 ADG _____
 Scrotal _____
 Fat P8 _____
 Rib _____
 Fat Rump _____
 IMF% _____
 EMA _____

Comment:

Lot 14: Thor is a large, framed poll scur bull with growth for age and presents with volume and compacity. Carries himself well and stands on good bone, sired by Yulgilbar Quiksilver.

Purchaser: _____

\$ _____

Yulgilbar Genetics Commercial Female Sale **February 2025**



LOT 15

CLASSIFIED S

Yulgilbar Tank T068 (PS)

Society ID: YUL22MT68

Born: 22/11/2022

21 Months

Male



WAVE HILL G52 (P)
 WARRILLEE K17 (P)
 WARRILLEE H118
SIRE: DUNLOP VIGGO R388 (P)
 YARRAWONGA YARDSTICK
 DUNLOP M493 (P)
 DUNLOP D909

WILGAROOON JESTER (AI)(P)
 THE LAKES P3 (AI)(P)
 THE LAKES M212
DAM: YULGILBAR J69
 SUJO EAGLE
 YULGILBAR C93
 YULGILBAR GOLD 164

Weight _____
 ADG _____
 Scrotal _____
 Fat P8 _____
 Rib _____
 Fat Rump _____
 IMF% _____
 EMA _____

Comment:

Lot 15: Tank is a powerful poll bull with an incredible amount of thickness. He presents natural depth and softness, also has strength of spine and a clean underline. Dam Yulgilbar J069 has 6 recorded progeny and PTIC at 10 years old. His Grand Dam Yulgilbar C93 was the mother of Yulgilbar Legend who was retained and used in the Yulgilbar stud. "First son to be offered by Dunlop Viggo"

Purchaser: _____

\$ _____

LOT 16

CLASSIFIED S

Yulgilbar Thumper T132 (P)

Society ID: YUL22MT132

Born: 6/11/2022

22 Months

Male



TYNDALE ENERGISER (PS)
 WARRILLEE K17 (P)
 ROCKINGHAM B29 (P)
SIRE: DUNLOP VIGGO R388 (P)
 MUNNABAH 400
 DUNLOP M493 (P)
 ROCKINGHAM V17 (P)

Unavailable
 MULTIPLE SIRE
 Unavailable
DAM: YULGILBAR M231 (P)
 Unavailable
 Unavailable
 Unavailable

Weight _____
 ADG _____
 Scrotal _____
 Fat P8 _____
 Rib _____
 Fat Rump _____
 IMF% _____
 EMA _____

Comment:

Lot 16: Thumper is a poll sire with length of body and a great temperament. He is moderate framed with a tidy sheath and displays desirable carcass attributes. Dam Yulgilbar M231 has recorded 4 calves in 4 years.

Purchaser: _____

\$ _____

LOT 17**CLASSIFIED S**

Yulgilbar Tango T084 (PS)

Society ID: YUL22MT84**Born:** 15/11/2022

21 Months

Male



WARENDA DENVER (P)
 YARRAWONGA FORMIDABLE L872 (P)
 WARENDA F13 (P)
SIRE: HARDIGREEN PARK VICE ROY N44 (P)
 DANGARFIELD STRONGHOLD
 HARDIGREEN PARK L13 (P)
 MURGONA DELIGHT

Unavailable
 MULTIPLE SIRE
 Unavailable
DAM: YULGILBAR K1207
 Unavailable
 MULTIPLE DAM
 Unavailable

Weight _____
 ADG _____
 Scrotal _____
 Fat P8 _____
 Rib _____
 Fat Rump _____
 IMF% _____
 EMA _____

Comment:

Lot 17: Tango is a moderate framed poll bull with a quiet nature stands on good bone, has softness and depth of body with natural doing ability. Dam K1207 has 5 recorded progenies and is PTIC, 2 classified females retained in the stud, another bull and Tango(T84) and a calf recently weaned.

Purchaser: _____

\$ _____

LOT 18**CLASSIFIED S**

Yulgilbar Troy T150 (P)

Society ID: YUL22MT150**Born:** 24/11/2022

21 Months

Male



WACO YALE E880 (P)
 YARRAWONGA FORMIDABLE L872 (P)
 YARRAWONGA G143
SIRE: HARDIGREEN PARK VICE ROY N44 (P)
 HARDIGREEN PARK QUO VADIS H118 (PS)
 HARDIGREEN PARK L13 (P)
 HARDIGREEN PARK H27 (P)

YARRAWONGA ARCHER G280
 GLENN OAKS JABBA J24 (P)
 GLENN OAKS Y58 (P)
DAM: YULGILBAR N099 (P)
 CARDONA LEGACY L159 (P)
 YULGILBAR K149
 YULGILBAR E221 (AI)(P)

Weight _____
 ADG _____
 Scrotal _____
 Fat P8 _____
 Rib _____
 Fat Rump _____
 IMF% _____
 EMA _____

Comment:

Lot 18: Troy is a poll sire that is owned by Will and Sarah Myer. This Bull is a soft easy doing type, deep bodied and stands on good bone with a quiet nature. Dam Yulgilbar N099 has had 4 calves, this includes one recently weaned and she is PTIC.

Purchaser: _____

\$ _____

LOT 19**CLASSIFIED S**

Yulgilbar Timeout T182 (PP)

Society ID: YUL22MT182**Born:** 22/11/2022

21 Months

Male



CARDONA MAMBO M33 (P)
 CARDONA PATTERSON P53 (P)
 CARDONA FIREFLY M280 (PS)
SIRE: YULGILBAR QUIKSILVER Q144 (PP)

THE LAKES P1 (AI)
 YULGILBAR J85 (P)
 Unavailable

WACO EINSTEIN K808 (P)
 TOOKEY CREEK MALTA (P)
 TOOKEY CREEK J59 (P)

DAM: YULGILBAR Q067 (P)

HARDIGREEN PARK NAUTILUS (P)
 YULGILBAR L053 (P)
 YULGILBAR G055 (P)

Weight _____
 ADG _____
 Scrotal _____
 Fat P8 _____
 Rib _____
 Fat Rump _____
 IMF% _____
 EMA _____

Comment:

Lot 19: Timeout is homozygous poll. This Bull is structurally sound, well balanced. He moves well and has a dark red coat with a tidy sheath. Timeout is the first calf from Dam Q067, her next calf has been recently weaned and she is PTIC.

Purchaser: _____

\$ _____

LOT 20**CLASSIFIED S**

Yulgilbar Tarzan T096 (P)

Society ID: YUL22MT96**Born:** 23/9/2022

23 Months

Male



(P) HARDIGREEN PARK PHOENIX G154
 VALLEYVIEW LUKE 1546 (P)
 VALLEYVIEW 1359

SIRE: DUNLOP UNGUARDED Q162 (P)

YARRAWONGA YARDSTICK
 DUNLOP H69
 DUNLOP C1055

WACO YARRABIN (P)
 CARDONA NARDOO N249 (PS)
 CARDONA J56

DAM: YULGILBAR M049 (P)

WARENDA SAHARA (P)
 YULGILBAR J267
 YULGILBAR A101 (AI)(P)

Weight _____
 ADG _____
 Scrotal _____
 Fat P8 _____
 Rib _____
 Fat Rump _____
 IMF% _____
 EMA _____

Comment:

Lot 20: Tarzan is a poll sire with a tropical skin type and good temperament. He is smooth through the front end and presents depth and softness. Dam Yulgilbar M049 has 4 recorded progenies and is PTIC.

Purchaser: _____

\$ _____

LOT 21

CLASSIFIED S

Yulgilbar Tsunami T058

Society ID: YUL22MT58

Born: 4/9/2022

24 Months

Male



WARENDA DENVER (P)
 VALLEYVIEW LUKE 1546 (P)
 WARENDA F13 (P)
SIRE: DUNLOP UNGUARDED Q162 (P)
 DANGARFIELD STRONGHOLD
 DUNLOP H69
 MURGONA DELIGHT

Unavailable
 MULTIPLE SIRE
 Unavailable

DAM: YULGILBAR K1379
 Unavailable
 MULTIPLE DAM
 Unavailable

Weight _____
 ADG _____
 Scrotal _____
 Fat P8 _____
 Rib _____
 Fat Rump _____
 IMF% _____
 EMA _____

Comment:

Lot 21: Tsunami is the first of the horned bulls in this year's sale draft. He is structurally sound and has great length of body, a very tidy sheath. He has a tropical coat type and has strength of spine, a good practical style of bull. "Tsunami will be at the 2024 Ekka"

Purchaser: _____

\$ _____

LOT 22

CLASSIFIED S

Yulgilbar Tik Tok T46

Society ID: YUL22MT46

Born: 20/11/2022

21 Months

Male



WARENDA DENVER (P)
 WARENDA LENNOX L32 (P)
 WARENDA F13 (P)
SIRE: MURGONA NIGHTCAP (P)
 DANGARFIELD STRONGHOLD
 MURGONA FELICIA F55
 MURGONA DELIGHT

CARDONA MAMBO M33 (P)
 CARDONA PATTERSON P53 (P)
 CARDONA FIREFLY M280 (PS)

DAM: YULGILBAR Q053
 WARENDA SAHARA (P)
 YULGILBAR H15 (P)
 Unavailable

Weight _____
 ADG _____
 Scrotal _____
 Fat P8 _____
 Rib _____
 Fat Rump _____
 IMF% _____
 EMA _____

Comment:

Lot 22: Tik Tok is a horned bull that presents with a lot of sire appeal. He has a desirable sleek dark red coat type, length and depth of body and is very smooth and clean through the front. A standout horned bull in this year's draft. Tik Tok is the first calf from Dam Yulgilbar Q053, she has recently weaned a calf and is PTIC.

Purchaser: _____

\$ _____

LOT 23**CLASSIFIED S**

Yulgilbar Toronto T064

Society ID: YUL22MT64**Born:** 17/10/2022

22 Months

Male



CARDONA JACKSON
 CARDONA MAMBO M33 (P)
 CARDONA JASMINE J180 (P)
SIRE: CARDONA PATTERSON P53 (P)
 WACO TREATY (P)
 CARDONA FIREFLY M280 (PS)
 CARDONA FIREFLY I124

 TALGAI GOLD G58 (AI)
 TALGAI JANGO (P)
 TALGAI GEM G21 (P)
DAM: YULGILBAR N253
 YULGILBAR DESTINY D304 (P)
 YULGILBAR J131 (P)
 THE LAKES J251

Weight _____
 ADG _____
 Scrotal _____
 Fat P8 _____
 Rib _____
 Fat Rump _____
 IMF% _____
 EMA _____

Comment:

Lot 23: Toronto is another outstanding horn bull in the draft. He has a sire's outlook with depth of body, loose skin and plenty of breed character. He stands on strong bone is structurally sound and is an easy doing type of Bull.

Purchaser: _____

\$ _____

LOT 24**CLASSIFIED S**

Yulgilbar Target T088

Society ID: YUL22MT88**Born:** 22/11/2022

21 Months

Male



TYNDALE ENERGISER (PS)
 ROCKINGHAM JOKER J100 (PS)
 ROCKINGHAM B29 (P)
SIRE: ROCKINGHAM PREDICTOR P52 (P)
 MUNNABAH 400
 ROCKINGHAM F99
 ROCKINGHAM V17 (P)

 WARENDA SAHARA (P)
 YULGILBAR GOVERNOR G038 (PS)
 YULGILBAR ALICIA
DAM: YULGILBAR N013
 MULTIPLE SIRE
 YULGILBAR K533
 MULTIPLE DAM

Weight _____
 ADG _____
 Scrotal _____
 Fat P8 _____
 Rib _____
 Fat Rump _____
 IMF% _____
 EMA _____

Comment:

Lot 24: Target, horned bull with a strong sirey head. He is well balanced, displays natural thickness is structurally sound with a clean sheath and quiet temperament. Dam Yulgilbar N013 has recorded 4 calves in 4 years and id PTIC.

Purchaser: _____

\$ _____

LOT 25**CLASSIFIED S**

Yulgilbar Trigger T128

Society ID: YUL22MT128**Born:** 7/11/2022

21 Months

Male



TYNDALE ENERGISER (PS)
 ROCKINGHAM JOKER J100 (PS)
 ROCKINGHAM B29 (P)
SIRE: ROCKINGHAM PREDICTOR P52 (P)
 MUNNABAH 400
 ROCKINGHAM F99
 ROCKINGHAM V17 (P)
 TALGAI GOLD G58 (AI)
 TALGAI JANGO (P)
 TALGAI GEM G21 (P)
DAM: YULGILBAR P009 (P)
 YULGILBAR DESTINY D304 (P)
 YULGILBAR J131 (P)
 THE LAKES J251

Weight _____
 ADG _____
 Scrotal _____
 Fat P8 _____
 Rib _____
 Fat Rump _____
 IMF% _____
 EMA _____

Comment:

Lot 25: Trigger, horned sire with length of body, is sound and correct with a strong head and tidy underline.

Purchaser: _____

\$ _____

LOT 26**COMMERCIAL**

Yulgilbar Trapper T216 (P)

Society ID: YUL23MT216**Born:** 2/1/2023

20 Months

Male



(P) HARDIGREEN PARK PHOENIX G154
 VALLEYVIEW LUKE 1546 (P)
 VALLEYVIEW 1359
SIRE: DUNLOP UNGUARDED Q162 (P)
 YARRAWONGA YARDSTICK
 DUNLOP H69
 DUNLOP C1055
 CARDONA MAMBO M33 (P)
 CARDONA PATTERSON P53 (P)
 CARDONA FIREFLY M280 (PS)
DAM: YULGILBAR N145 (P)
 YULGILBAR COUNCILLOR (AI)(P)
 YULGILBAR J193 (P)
 YULGILBAR X43

Weight _____
 ADG _____
 Scrotal _____
 Fat P8 _____
 Rib _____
 Fat Rump _____
 IMF% _____
 EMA _____

Comment:

Lot 26: Trapper, poll bull with a tropical outlook that travels well, he has a clean skin type and is soft and smooth right through his body.

Purchaser: _____

\$ _____

LOT 27

COMMERCIAL

Yulgilbar Twister T178 (P)

Society ID: YUL22MT178

Born: 20/11/2022

21 Months

Male



WACO YALE E880 (P)	Weight
YARRAWONGA FORMIDABLE L872 (P)	ADG
YARRAWONGA G143	Scrotal
SIRE: HARDIGREEN PARK VICE ROY N44 (P)	Fat P8
HARDIGREEN PARK QUO VADIS H118 (PS)	Rib
HARDIGREEN PARK L13 (P)	Fat Rump
HARDIGREEN PARK H27 (P)	IMF%
Unavailable	EMA
Unavailable	
Unavailable	
DAM: YULGILBAR M239	
Unavailable	
YULGILBAR J301	
MULTIPLE DAM	

Comment:

Lot 27: Twister, poll sire that is big framed with loads of volume, he is structurally sound and has a quiet nature.

Purchaser:

\$

LOT 28

PENDING

Yulgilbar Tinder T172 (PP)

Society ID: YUL22MT172

Born: 16/9/2022

23 Months

Male



WAVE HILL G52 (P)	Weight
WARRILLEE K17 (P)	ADG
WARRILLEE H118	Scrotal
SIRE: DUNLOP VIGGO R388 (P)	Fat P8
YARRAWONGA YARDSTICK	Rib
DUNLOP M493 (P)	Fat Rump
DUNLOP D909	IMF%
Unavailable	EMA
Unavailable	
Unavailable	
DAM: MULTIPLE DAM	
Unavailable	
Unavailable	
Unavailable	

Comment:

Lot 28: Tinder is a homozygous poll sire that is thick deep and soft with natural doing ability. He travels freely and is very correct.

Purchaser:

\$

LOT 29

PENDING

Yulgilbar Tablelands T126 (P)

Society ID: YUL22MT126

Born: 20/10/2022

22 Months

Male



MULTIPLE SIRE
 WACO ADDICTIVE F1090 (PS)
 WACO D1003 (P)
SIRE: WACO QUEENSLANDER Q384 (PS)
 MULTIPLE SIRE
 YARRAWONGA H275 (P)
 YARRAWONGA X687

Unavailable
 Unavailable
 Unavailable
DAM: MULTIPLE DAM
 Unavailable
 Unavailable
 Unavailable

Weight _____
 ADG _____
 Scrotal _____
 Fat P8 _____
 Rib _____
 Fat Rump _____
 IMF% _____
 EMA _____

Comment:

Lot 29: Tablelands, poll bull that has structural soundness great length of body and strength of spine. He has a clean sheath and moves well.

Purchaser: _____

\$ _____

LOT 30

COMMERCIAL

Yulgilbar Territory T166 (PS)

Society ID: YUL22MT166

Born: 21/8/2022

24 Months

Male



MULTIPLE SIRE
 WACO ADDICTIVE F1090 (PS)
 WACO D1003 (P)
SIRE: WACO QUEENSLANDER Q384 (PS)
 MULTIPLE SIRE
 YARRAWONGA H275 (P)
 YARRAWONGA X687

WACO F268 (ET)
 YARRAWONGA DROVER J586 (P)
 WACO AUTUMN G1017 (ET)
DAM: YULGILBAR L117
 THE LAKES ZULU
 THE LAKES H263
 THE LAKES CARLOTTA

Weight _____
 ADG _____
 Scrotal _____
 Fat P8 _____
 Rib _____
 Fat Rump _____
 IMF% _____
 EMA _____

Comment:

Lot 30: Territory, poll scur sire that has length and depth of body a clean underline and presents natural muscling and desirable carcass attributes.

Purchaser: _____

\$ _____

LOT 31

COMMERCIAL

Yulgilbar Turpentine T330 (PP)

Society ID: YUL22MT330

Born: 20/9/2022

23 Months

Male



Unavailable
 MULTIPLE SIRE
 Unavailable
SIRE: YULGILBAR M258 (P)
 Unavailable
 MULTIPLE DAM
 Unavailable
 Unavailable
 Unavailable
 Unavailable
DAM: MULTIPLE DAM
 Unavailable
 Unavailable
 Unavailable

Weight _____
 ADG _____
 Scrotal _____
 Fat P8 _____
 Rib _____
 Fat Rump _____
 IMF% _____
 EMA _____

Comment:

Lot 31: Turpentine, larger framed homozygous poll bull who has plenty of length of body, breed character and stands on strong bone with a quiet temperament.

Purchaser: _____

\$ _____

LOT 32

COMMERCIAL

Yulgilbar Trumpet T270 (P)

Society ID: YUL22MT270

Born: 16/10/2022

22 Months

Male



WACO F268 (ET)
 YARRAWONGA DROVER J586 (P)
 WACO AUTUMN G1017 (ET)
SIRE: YULGILBAR M124
 TARA MONARCH
 YULGILBAR H35
 Unavailable
 Unavailable
 Unavailable
 Unavailable
DAM: MULTIPLE DAM
 Unavailable
 Unavailable
 Unavailable

Weight _____
 ADG _____
 Scrotal _____
 Fat P8 _____
 Rib _____
 Fat Rump _____
 IMF% _____
 EMA _____

Comment:

Lot 32: Trumpet, poll bull with a desirable skin type, he is a soft, thick, deep easy doing style of bull. Stands on good bone and is sound and correct.

Purchaser: _____

\$ _____

LOT 33

COMMERCIAL

Yulgilbar Tradition T334 (P)

Society ID: YUL22MT334

Born: 29/9/2022

23 Months

Male



WARENDA SAHARA (P)
YULGILBAR D202 (AI)(PS)
YULGILBAR Z71

SIRE: YULGILBAR G076 (P)

MULTIPLE SIRE
YULGILBAR E1587 (P)
Unavailable

Unavailable
Unavailable
Unavailable

DAM: MULTIPLE DAM

Unavailable
Unavailable
Unavailable

Weight _____
ADG _____
Scrotal _____
Fat P8 _____
Rib _____
Fat Rump _____
IMF% _____
EMA _____

Comment:

Lot 33: Tradition, poll bull with a quiet nature he stands on good bone and is a naturally thick, soft easy doing type.

Purchaser: _____

\$ _____

LOT 34

COMMERCIAL

Yulgilbar Timber T300

Society ID: YUL22MT300

Born: 16/9/2022

23 Months

Male



WACO TREATY (P)
CARDONA LEGACY L159 (P)
CARDONA LUCINDA B16

SIRE: YULGILBAR K038

YULGILBAR ARCHILLES (AI)(P)
YULGILBAR E163
Unavailable

Unavailable
Unavailable
Unavailable

DAM: MULTIPLE DAM

Unavailable
Unavailable
Unavailable

Weight _____
ADG _____
Scrotal _____
Fat P8 _____
Rib _____
Fat Rump _____
IMF% _____
EMA _____

Comment:

Lot 34: Timber is a big thumping horned bull with a sire's outlook, he displays length of body, spring of rib and strength over the topline.

Purchaser: _____

\$ _____

LOT 35

COMMERCIAL

Yulgilbar Taxi T284

Society ID: YUL22MT284

Born: 6/11/2022

22 Months

Male



WACO TREATY (P)
 CARDONA LEGACY L159 (P)
 CARDONA LUCINDA B16

SIRE: YULGILBAR K038
 YULGILBAR ARCHILLES (AI)(P)
 YULGILBAR E163
 Unavailable
 Unavailable
 Unavailable
 Unavailable

DAM: MULTIPLE DAM
 Unavailable
 Unavailable
 Unavailable

Weight _____
 ADG _____
 Scrotal _____
 Fat P8 _____
 Rib _____
 Fat Rump _____
 IMF% _____
 EMA _____

Comment:

Lot 35: Taxi, another big, framed horn bull with plenty of volume, strong head with hooded eye and is deep bodied with structural soundness.

Purchaser: _____

\$ _____

LOT 36

COMMERCIAL

Yulgilbar Thunderbolt T116

Society ID: YUL22MT116

Born: 4/10/2022

23 Months

Male



MULTIPLE SIRE
 WACO ADDICTIVE F1090 (PS)
 WACO D1003 (P)

SIRE: WACO QUEENSLANDER Q384 (PS)
 MULTIPLE SIRE
 YARRAWONGA H275 (P)
 YARRAWONGA X687
 WIGHTFIELDS ZINZAN G43 (P)
 MOONGANA KARACHI 2724 (P)
 MOONGANA B1449

DAM: YULGILBAR P197 (P)
 WARENDA SAHARA (P)
 YULGILBAR K003 (AI)(P)
 YULGILBAR G137

Weight _____
 ADG _____
 Scrotal _____
 Fat P8 _____
 Rib _____
 Fat Rump _____
 IMF% _____
 EMA _____

Comment:

Lot 36: Thunderbolt, big framed horn bull that stands on strong bone has great length of body with a clean dark red coat type.

Purchaser: _____

\$ _____

LOT 37**PENDING**

Yulgilbar Tribute T078

Society ID: YUL22MT78**Born:** 9/10/2022

22 Months

Male



WACO YALE E880 (P)	Weight
YARRAWONGA FORMIDABLE L872 (P)	ADG
YARRAWONGA G143	Scrotal
SIRE: HARDIGREEN PARK VICE ROY N44 (P)	Fat P8
HARDIGREEN PARK QUO VADIS H118 (PS)	Rib
HARDIGREEN PARK L13 (P)	Fat Rump
HARDIGREEN PARK H27 (P)	IMF%
Unavailable	EMA
Unavailable	
Unavailable	
DAM: MULTIPLE DAM	
Unavailable	
Unavailable	
Unavailable	

Comment:

Lot 37: Tribute, horned bull that is structurally sound with a good temperament and he is a deep soft easy doing style of bull.

Purchaser:

\$

LOT 38**CLASSIFIED S**

Yulgilbar Tavern T148 (P)

Society ID: YUL22MT148**Born:** 13/9/2022

23 Months

Male



(P) HARDIGREEN PARK PHOENIX G154	Weight
VALLEYVIEW LUKE 1546 (P)	ADG
VALLEYVIEW 1359	Scrotal
SIRE: DUNLOP UNGUARDED Q162 (P)	Fat P8
YARRAWONGA YARDSTICK	Rib
DUNLOP H69	Fat Rump
DUNLOP C1055	IMF%
WAVE HILL Z146 (P)	EMA
HARDIGREEN PARK NAUTILUS (P)	
HARDIGREEN PARK C15	
DAM: YULGILBAR K109 (P)	
YARRAWONGA WALLABY (P)	
YULGILBAR G069 (P)	
YULGILBAR D293	

Comment:

Lot 38: Tavern, poll sire with a tropical outlook desirable skin type and breed character. He is naturally thick and structurally sound and correct. Dam Yulgilbar K109 Has 6 recorded progenies, this includes Yulgilbar Patriot who is retained in the Yulgilbar stud.

Purchaser:

\$

LOT 39

CLASSIFIED S

Yulgilbar Tonic T144 (PP)

Society ID: YUL22MT144

Born: 25/9/2022

23 Months

Male



(P) HARDIGREEN PARK PHOENIX G154
 VALLEYVIEW LUKE 1546 (P)
 VALLEYVIEW 1359
SIRE: DUNLOP UNGUARDED Q162 (P)
 YARRAWONGA YARDSTICK
 DUNLOP H69
 DUNLOP C1055
 Unavailable
 MULTIPLE SIRE
 Unavailable
DAM: YULGILBAR H381
 Unavailable
 Unavailable
 Unavailable

Weight _____
 ADG _____
 Scrotal _____
 Fat P8 _____
 Rib _____
 Fat Rump _____
 IMF% _____
 EMA _____

Comment:

Lot 39: Tonic, homozygous poll bull with natural thickness and length of body, he has a tidy underline and stands on good bone. Dam Yulgilbar H381 has 8 recorded calves.

Purchaser: _____

\$ _____

LOT 40

CLASSIFIED S

Yulgilbar Trademark T069 (P)

Society ID: YUL22MT69

Born: 21/11/2022

21 Months

Male



CARDONA JACKSON
 CARDONA MAMBO M33 (P)
 CARDONA JASMINE J180 (P)
SIRE: CARDONA PATTERSON P53 (P)
 WACO TREATY (P)
 CARDONA FIREFLY M280 (PS)
 CARDONA FIREFLY I124
 WARENDA SAHARA (P)
 YULGILBAR DESTINY D304 (P)
 YULGILBAR Z3
DAM: YULGILBAR J131 (P)
 THE LAKES FIREMAN (AI)
 THE LAKES J251
 THE LAKES F27

Weight _____
 ADG _____
 Scrotal _____
 Fat P8 _____
 Rib _____
 Fat Rump _____
 IMF% _____
 EMA _____

Comment:

Lot 40: Trademark, well balanced poll bull with a good skin type, smooth through the front end and a clean underline.

Purchaser: _____

\$ _____

LOT 41**CLASSIFIED S**

Yulgilbar Transformer T180 (P)

Society ID: YUL22MT180**Born:** 30/11/2022

21 Months

Male



WARENDA DENVER (P)
 WARENDA LENNOX L32 (P)
 WARENDA F13 (P)
SIRE: MURGONA NIGHTCAP (P)
 DANGARFIELD STRONGHOLD
 MURGONA FELICIA F55
 MURGONA DELIGHT

CARDONA MAMBO M33 (P)
 CARDONA PATTERSON P53 (P)
 CARDONA FIREFLY M280 (PS)
DAM: YULGILBAR Q015 (P)
 TOOKEY CREEK GERONIMO G38 (P)
 YULGILBAR M037 (P)
 YULGILBAR E065

Weight _____
 ADG _____
 Scrotal _____
 Fat P8 _____
 Rib _____
 Fat Rump _____
 IMF% _____
 EMA _____

Comment:

Lot 41: Transformer, poll bull with depth of body, breed character and natural doing ability.

Purchaser: _____

\$ _____

LOT 42**CLASSIFIED S**

Yulgilbar Triton T218 (P)

Society ID: YUL22MT218**Born:** 20/12/2022

20 Months

Male



WAVE HILL G52 (P)
 WARRILLEE K17 (P)
 WARRILLEE H118
SIRE: DUNLOP VIGGO R388 (P)
 YARRAWONGA YARDSTICK
 DUNLOP M493 (P)
 DUNLOP D909
 WARRILLEE EVEREADY E30 (P)
 DANGARFIELD WHIP CRACKER W211 (PS)
 DANGARFIELD 1823

DAM: YULGILBAR N223 (P)
 ROSEVALE COMANCHE C20
 YULGILBAR E435
 THE LAKES 067

Weight _____
 ADG _____
 Scrotal _____
 Fat P8 _____
 Rib _____
 Fat Rump _____
 IMF% _____
 EMA _____

Comment:

Lot 42: Triton, is a younger poll bull with good bone, a smooth muscle patten depth of body and is sound and correct. Dam Yulgilbar N223 has 4 recorded progenies and grand dam E435 has 9 registered calves.

Purchaser: _____

\$ _____

LOT 43

CLASSIFIED S

Yulgilbar Turbine T248 (PP)

Society ID: YUL23MT248

Born: 1/2/2023

19 Months

Male



WACO TRITON (ET)(P)
WACO ELAND J1402 (P)
WACO Y65
SIRE: GLENN OAKS MOMBASA M96 (P)

MULTIPLE SIRE
WACO G153 (P)
MULTIPLE DAM

CARDONA MAMBO M33 (P)
CARDONA PATTERSON P53 (P)
CARDONA FIREFLY M280 (PS)

DAM: YULGILBAR N037 (AI)(P)
YULGILBAR COUNCILLOR (AI)(P)
YULGILBAR K169
YULGILBAR Z93

Weight
ADG
Scrotal
Fat P8
Rib
Fat Rump
IMF%
EMA

Comment:

Lot 43: Turbine, younger homozygous poll bull with spring of rib, strength of spine and a tidy underline.

Purchaser:

\$

LOT 44

CLASSIFIED S

Yulgilbar Tandem T056 (P)

Society ID: YUL22MT56

Born: 15/9/2022

23 Months

Male



MULTIPLE SIRE
WACO ADDICTIVE F1090 (PS)
WACO D1003 (P)
SIRE: WACO QUEENSLANDER Q384 (PS)

MULTIPLE SIRE
YARRAWONGA H275 (P)
YARRAWONGA X687

Unavailable
Unavailable
Unavailable

DAM: YULGILBAR M197
WARENDA SAHARA (P)
Unavailable
YULGILBAR B153

Weight
ADG
Scrotal
Fat P8
Rib
Fat Rump
IMF%
EMA

Comment:

Lot 44: Tandem, poll bull with a moderate frame and early maturity, thick and meaty. Very clean sheath and structurally sound. Dam Yulgilbar M197 has 5 recorded calves and is PTIC.

Purchaser:

\$

LOT 45

CLASSIFIED S

Yulgilbar Tartan T038

Society ID: YUL22MT38

Born: 26/10/2022

22 Months

Male



WARENDA DENVER (P)
 WARENDA LENNOX L32 (P)
 WARENDA F13 (P)
SIRE: MURGONA NIGHTCAP (P)
 DANGARFIELD STRONGHOLD
 MURGONA FELICIA F55
 MURGONA DELIGHT

TYNDALE EARTHQUAKE (P)
 TALGAI HURRICANE H126 (P)
 TALGAI EBONY

DAM: YULGILBAR Q153
 WARENDA EQUATOR E58 (P)
 YULGILBAR K245
 YULGILBAR Z719

Weight _____
 ADG _____
 Scrotal _____
 Fat P8 _____
 Rib _____
 Fat Rump _____
 IMF% _____
 EMA _____

Comment:

Lot 45: Tartan, horn bull, quiet natured, long bodied with natural muscling with a tidy underline.

Purchaser: _____

\$ _____

LOT 46

PENDING

Yulgilbar Temple T070

Society ID: YUL22MT70

Born: 20/10/2022

22 Months

Male



CARDONA JACKSON
 CARDONA MAMBO M33 (P)
 CARDONA JASMINE J180 (P)
SIRE: CARDONA PATTERSON P53 (P)
 WACO TREATY (P)
 CARDONA FIREFLY M280 (PS)
 CARDONA FIREFLY I124

Unavailable
 Unavailable
 Unavailable

DAM: MULTIPLE DAM
 Unavailable
 Unavailable
 Unavailable

Weight _____
 ADG _____
 Scrotal _____
 Fat P8 _____
 Rib _____
 Fat Rump _____
 IMF% _____
 EMA _____

Comment:

Lot 46: Temple, horned bull has a lot of eye appeal, clean through the front with a smooth muscle pattern, well balanced and structurally sound.

Purchaser: _____

\$ _____

LOT 47

COMMERCIAL

Yulgilbar Tweed T010 (PP)

Society ID: YUL22MT10

Born: 16/6/2022

26 Months

Male



CARDONA MAMBO M33 (P)
 CARDONA PATTERSON P53 (P)
 CARDONA FIREFLY M280 (PS)
SIRE: YULGILBAR QUIKSILVER Q144 (PP)
 THE LAKES P1 (AI)
 YULGILBAR J85 (P)
 Unavailable

 BENELKAY FONZ 741 (P)
 BENELKAY JUNGLE JIM 1254
 BENELKAY 984 (P)
DAM: YULGILBAR P143
 WARENDA SAHARA (P)
 YULGILBAR J41 (P)
 YULGILBAR ZARA

Weight _____
 ADG _____
 Scrotal _____
 Fat P8 _____
 Rib _____
 Fat Rump _____
 IMF% _____
 EMA _____

Comment:

Lot 47: Tweed is a homozygous poll bull, moderate framed, length of body, stands on good bone and has a soft smooth muscle pattern and quiet temperament.

Purchaser: _____

\$ _____

LOT 48

COMMERCIAL

Yulgilbar Terrace T234 (P)

Society ID: YUL22MT234

Born: 10/10/2022

22 Months

Male



Unavailable
 MULTIPLE SIRE
 Unavailable
SIRE: YULGILBAR N832 (P)
 Unavailable
 MULTIPLE DAM
 Unavailable

 Unavailable
 Unavailable
 Unavailable
DAM: MULTIPLE DAM
 Unavailable
 Unavailable
 Unavailable

Weight _____
 ADG _____
 Scrotal _____
 Fat P8 _____
 Rib _____
 Fat Rump _____
 IMF% _____
 EMA _____

Comment:

Lot 48: Terrace, poll bull that is a moderate framed, early maturing type. He is sound and correct with a clean sheath.

Purchaser: _____

\$ _____

LOT 49

COMMERCIAL

Yulgilbar Thermal T314 (PP)

Society ID: YUL22MT314

Born: 26/10/2022

22 Months

Male



CARDONA MAMBO M33 (P)
 CARDONA PATTERSON P53 (P)
 CARDONA FIREFLY M280 (PS)
SIRE: YULGILBAR QUIKSILVER Q144 (PP)
 THE LAKES P1 (AI)
 YULGILBAR J85 (P)
 Unavailable
 Unavailable
 Unavailable
 Unavailable
DAM: MULTIPLE DAM
 Unavailable
 Unavailable
 Unavailable

Weight _____
 ADG _____
 Scrotal _____
 Fat P8 _____
 Rib _____
 Fat Rump _____
 IMF% _____
 EMA _____

Comment:

Lot 49: Thermal is a homozygous poll bull that is moderate framed, deep bodied and has a desirable skin type with a tidy sheath.

Purchaser: _____

\$ _____

2022 RNA Paddock to Palate Competition

SANTA POWER



Class 37A. Rabobank Best Weight Gain.
Pen of Six Grain Fed Steers (100 Day)
1st Yulgilbar Pastoral Company Baryulgil NSW
 Hereford/Santa ADG 3.262kg

Class 37A. Rabobank Highest Individual Weight Gain.
1st Yulgilbar Pastoral Company, Baryulgil, NSW
 Hereford/Santa ADG 3.59kg

Class 38A. Elanco Animal Health Best Weight Gain.
Pen of Six Grain Fed Steers (70 day)
1st Yulgilbar Pastoral Company, Baryulgil, NSW
 Santa Gertrudis ADG 3.186kg




Santa Gertrudis
Beefing up Australia

1300 305 708
www.santagertrudis.com.au

Kris Elliott, Yulgilbar Pastoral Company and Brett Ellem, General Manager, Yulgilbar Pastoral Company.

LOT 50

COMMERCIAL

Yulgilbar Tollway T264 (PP)

Society ID: YUL22MT264

Born: 20/8/2022

24 Months

Male



Unavailable
 MULTIPLE SIRE
 Unavailable
SIRE: YULGILBAR M174 (P)
 ROSEVALE NODDY D216 (PS)
 YULGILBAR J159 (P)
 YULGILBAR C13
 Unavailable
 Unavailable
 Unavailable
DAM: MULTIPLE DAM
 Unavailable
 Unavailable
 Unavailable

Weight
 ADG
 Scrotal
 Fat P8
 Rib
 Fat Rump
 IMF%
 EMA

Comment:

Lot 50: Tollway, homozygous poll bull, powerful, thick, and deep bodied with a tropical outlook, clean underline and quiet temperament.

Purchaser:

\$

LOT 51

COMMERCIAL

Yulgilbar Transit T272 (P)

Society ID: YUL22MT272

Born: 27/9/2022

23 Months

Male



WACO F268 (ET)
 YARRAWONGA DROVER J586 (P)
 WACO AUTUMN G1017 (ET)
SIRE: YULGILBAR M124
 TARA MONARCH
 YULGILBAR H35
 Unavailable
 Unavailable
 Unavailable
 Unavailable
DAM: MULTIPLE DAM
 Unavailable
 Unavailable
 Unavailable

Weight
 ADG
 Scrotal
 Fat P8
 Rib
 Fat Rump
 IMF%
 EMA

Comment:

Lot 51: Transit is a deep bodied poll bull that displays plenty of softness and depth of flank.

Purchaser:

\$

LOT 52

COMMERCIAL

Yulgilbar Trident T310 (PS)

Society ID: YUL22MT310

Born: 1/10/2022

23 Months

Male



WARENDA DENVER (P)
 WARENDA LENNOX L32 (P)
 WARENDA F13 (P)
SIRE: MURGONA NIGHTCAP (P)
 DANGARFIELD STRONGHOLD
 MURGONA FELICIA F55
 MURGONA DELIGHT
 YARRAWONGA ARCHER G280
 GLENN OAKS JABBA J24 (P)
 GLENN OAKS Y58 (P)
DAM: YULGILBAR Q151
 WARENDA SAHARA (P)
 YULGILBAR H71 (P)
 Unavailable

Weight _____
 ADG _____
 Scrotal _____
 Fat P8 _____
 Rib _____
 Fat Rump _____
 IMF% _____
 EMA _____

Comment:

Lot 52: Trident, poll bull with length of body, spring of rib and is well muscled. He stands on good bone and is strong over the topline.

Purchaser: _____

\$ _____

LOT 53

COMMERCIAL

Yulgilbar Tabloid T226 (PS)

Society ID: YUL22MT226

Born: 25/10/2022

22 Months

Male



YARRAWONGA VOLTAGE (P)
 WALMONA SINCLAIR 1212 (P)
 GOLDEN ELM OCTAVIA
SIRE: IDEAL NEPTUNE N78 (P)
 HARDIGREEN PARK KLONDYKE
 IDEAL IRELAND I22
 IDEAL C58
 Unavailable
 Unavailable
 Unavailable
DAM: MULTIPLE DAM
 Unavailable
 Unavailable
 Unavailable

Weight _____
 ADG _____
 Scrotal _____
 Fat P8 _____
 Rib _____
 Fat Rump _____
 IMF% _____
 EMA _____

Comment:

Lot 53: Tabloid is a poll bull with length and depth of body that moves freely and has natural thickness.

Purchaser: _____

\$ _____

LOT 54

CLASSIFIED S

Yulgilbar Timezone T188

Society ID: YUL22MT188

Born: 24/11/2022

21 Months

Male



WARENDA DENVER (P)
 WARENDA LENNOX L32 (P)
 WARENDA F13 (P)
SIRE: MURGONA NIGHTCAP (P)
 DANGARFIELD STRONGHOLD
 MURGONA FELICIA F55
 MURGONA DELIGHT

Unavailable
 MULTIPLE SIRE
 Unavailable

DAM: YULGILBAR Q1073
 Unavailable
 Unavailable
 Unavailable

Weight _____
 ADG _____
 Scrotal _____
 Fat P8 _____
 Rib _____
 Fat Rump _____
 IMF% _____
 EMA _____

Comment:

Lot 54: Timezone, horned bull with a tropical outlook and breed character. He has a smooth muscle pattern and travels well.

Purchaser: _____

\$ _____

LOT 55

CLASSIFIED S

Yulgilbar Tomahawk T024

Society ID: YUL22MT24

Born: 12/11/2022

21 Months

Male



WARENDA DENVER (P)
 WARENDA LENNOX L32 (P)
 WARENDA F13 (P)
SIRE: MURGONA NIGHTCAP (P)
 DANGARFIELD STRONGHOLD
 MURGONA FELICIA F55
 MURGONA DELIGHT

Unavailable
 MULTIPLE SIRE
 Unavailable

DAM: YULGILBAR Q85
 Unavailable
 MULTIPLE DAM
 Unavailable

Weight _____
 ADG _____
 Scrotal _____
 Fat P8 _____
 Rib _____
 Fat Rump _____
 IMF% _____
 EMA _____

Comment:

Lot 55: Tomahawk is a horned bull with natural muscling and thickness, he is an early maturing easy doing style of bull.

Purchaser: _____

\$ _____

LOT 56**CLASSIFIED S**

Yulgilbar Traction T154

Society ID: YUL22MT154**Born:** 24/11/2022

21 Months

Male



TYNDALE ENERGISER (PS)
 ROCKINGHAM JOKER J100 (PS)
 ROCKINGHAM B29 (P)
SIRE: ROCKINGHAM PREDICTOR P52 (P)
 MUNNABAH 400
 ROCKINGHAM F99
 ROCKINGHAM V17 (P)

Unavailable
 MULTIPLE SIRE
 Unavailable

DAM: YULGILBAR M227 (P)
 Unavailable
 Unavailable
 Unavailable

Weight _____
 ADG _____
 Scrotal _____
 Fat P8 _____
 Rib _____
 Fat Rump _____
 IMF% _____
 EMA _____

Comment:

Lot 56: Traction is a horned bull that is well balanced, structurally sound, with a strong head and clean underline. Dam Yulgilbar M227 has 5 recorded calves and PTIC.

Purchaser: _____

\$ _____

LOT 57**CLASSIFIED S**

Yulgilbar Traveller T020

Society ID: YUL22MT20**Born:** 11/10/2022

22 Months

Male



WARENDA DENVER (P)
 WARENDA LENNOX L32 (P)
 WARENDA F13 (P)
SIRE: MURGONA NIGHTCAP (P)
 DANGARFIELD STRONGHOLD
 MURGONA FELICIA F55
 MURGONA DELIGHT

MULTIPLE SIRE
 CARDONA Q271 (P)
 KYROAN 831

DAM: YULGILBAR Q203
 WARENDA EQUATOR E58 (P)
 YULGILBAR H107 (AI)(P)
 YULGILBAR F397 (P)

Weight _____
 ADG _____
 Scrotal _____
 Fat P8 _____
 Rib _____
 Fat Rump _____
 IMF% _____
 EMA _____

Comment:

Lot 57: Traveller is a horned bull that is a moderate framed, thick, early maturing type and has a quiet nature.

Purchaser: _____

\$ _____

LOT 58

COMMERCIAL

Yulgilbar Tungsten T312

Society ID: YUL22MT312

Born: 16/10/2022

22 Months

Male



WARENDA DENVER (P)
 WARENDA LENNOX L32 (P)
 WARENDA F13 (P)
SIRE: MURGONA NIGHTCAP (P)
 DANGARFIELD STRONGHOLD
 MURGONA FELICIA F55
 MURGONA DELIGHT

WACO F268 (ET)
 YARRAWONGA DROVER J586 (P)
 WACO AUTUMN G1017 (ET)
DAM: YULGILBAR Q175
 WARENDA SAHARA (P)
 YULGILBAR E041 (P)
 YULGILBAR PAM 24TH

Weight _____
 ADG _____
 Scrotal _____
 Fat P8 _____
 Rib _____
 Fat Rump _____
 IMF% _____
 EMA _____

Comment:

Lot 58: Tungsten, horned bull that presents structural soundness and strength of spine. He travels well and has a quiet nature.

Purchaser: _____

\$ _____

LOT 59

COMMERCIAL

Yulgilbar Thatcher T224

Society ID: YUL22MT224

Born: 27/9/2022

23 Months

Male



YARRAWONGA AVENGER G300 (PS)
 YARRAWONGA EL SALVADOR K306 (PS)
 WACO CHANEL H95 (ET)(PS)
SIRE: WACO PIONEER P110 (P)
 WACO SAMSON
 WACO H253
 WACO B503

Unavailable
 Unavailable
 Unavailable
DAM: MULTIPLE DAM
 Unavailable
 Unavailable
 Unavailable

Weight _____
 ADG _____
 Scrotal _____
 Fat P8 _____
 Rib _____
 Fat Rump _____
 IMF% _____
 EMA _____

Comment:

Lot 59: Thatcher, horned bull that is an early maturing, moderate framed, thick easy doing style of bull with a clean skin type.

Purchaser: _____

\$ _____

LOT 60

COMMERCIAL

Yulgilbar Tasmania T304 (PP)

Society ID: YUL22MT304

Born: 6/11/2022

22 Months

Male



WARENDA DENVER (P)
 WARENDA LENNOX L32 (P)
 WARENDA F13 (P)
SIRE: MURGONA NIGHTCAP (P)
 DANGARFIELD STRONGHOLD
 MURGONA FELICIA F55
 MURGONA DELIGHT

TYNDALE EARTHQUAKE (P)
 TALGAI HURRICANE H126 (P)
 TALGAI EBONY

DAM: YULGILBAR Q107
 MULTIPLE SIRE
 YULGILBAR K183
 YULGILBAR B45 (AI)

Weight _____
 ADG _____
 Scrotal _____
 Fat P8 _____
 Rib _____
 Fat Rump _____
 IMF% _____
 EMA _____

Comment:

Lot 60: Tasmania is a dark red, quiet, homozygous poll bull with a strong head and has plenty of breed character.

Purchaser: _____

\$ _____

LOT 61

COMMERCIAL

Yulgilbar Trophy T034 (PP)

Society ID: YUL22MT34

Born: 10/10/2022

22 Months

Male



WARENDA DENVER (P)
 WARENDA LENNOX L32 (P)
 WARENDA F13 (P)
SIRE: MURGONA NIGHTCAP (P)
 DANGARFIELD STRONGHOLD
 MURGONA FELICIA F55
 MURGONA DELIGHT

Unavailable
 MULTIPLE SIRE
 Unavailable

DAM: YULGILBAR 871 (P)
 Unavailable
 MULTIPLE DAM
 Unavailable

Weight _____
 ADG _____
 Scrotal _____
 Fat P8 _____
 Rib _____
 Fat Rump _____
 IMF% _____
 EMA _____

Comment:

Lot 61: Trophy, homozygous poll bull with a good temperament, length of body and breed character. A nice bull towards the end of the catalogue.

Purchaser: _____

\$ _____

LOT 62

COMMERCIAL

Yulgilbar Token T296 (PP)

Society ID: YUL22MT296

Born: 20/10/2022

22 Months

Male



Unavailable
 MULTIPLE SIRE
 Unavailable
SIRE: YULGILBAR M174 (P)
 ROSEVALE NODDY D216 (PS)
 YULGILBAR J159 (P)
 YULGILBAR C13

Unavailable
 Unavailable
 Unavailable
DAM: MULTIPLE DAM
 Unavailable
 Unavailable
 Unavailable

Weight _____
 ADG _____
 Scrotal _____
 Fat P8 _____
 Rib _____
 Fat Rump _____
 IMF% _____
 EMA _____

Comment:

Lot 62: Token is a large framed homozygous poll bull that stands on strong bone with loose skin and a good strong head.

Purchaser: _____

\$ _____

LOT 63

COMMERCIAL

Yulgilbar Talisman T338 (PP)

Society ID: YUL22MT338

Born: 16/11/2022

21 Months

Male



MULTIPLE SIRE
 DANGARFIELD RANDI (P)
 Unavailable
SIRE: DUNLOP RED HAWKE M614
 Unavailable
 MULTIPLE DAM
 Unavailable
 Unavailable
 Unavailable
 Unavailable
 Unavailable
DAM: MULTIPLE DAM
 Unavailable
 Unavailable
 Unavailable

Weight _____
 ADG _____
 Scrotal _____
 Fat P8 _____
 Rib _____
 Fat Rump _____
 IMF% _____
 EMA _____

Comment:

Lot 63: Talisman is a big upstanding homozygous poll bull; he is long and deep with a tropical skin type.

Purchaser: _____

\$ _____

LOT 64

CLASSIFIED S

Yulgilbar Sharp As S068 (AI) (P)

Society ID: YUL21MS68

Born: 21/9/2021

35 Months

Male



MULTIPLE SIRE
WACO ADDICTIVE F1090 (PS)
WACO D1003 (P)
SIRE: WACO QUEENSLANDER Q384 (PS)
MULTIPLE SIRE
YARRAWONGA H275 (P)
YARRAWONGA X687

Unavailable
MULTIPLE SIRE
Unavailable
DAM: YULGILBAR E273
Unavailable
MULTIPLE DAM
Unavailable

Weight _____
ADG _____
Scrotal _____
Fat P8 _____
Rib _____
Fat Rump _____
IMF% _____
EMA _____

Comment:

Lot 64: Sharp As is an older poll bull with loads of volume, compacity and depth of body. With a little more maturity these 4 bulls are ready to work and will suit any paddock conditions.

Purchaser: _____

\$ _____

LOT 65

CLASSIFIED S

Yulgilbar Sargent S166 (PP)

Society ID: YUL21MS166

Born: 25/11/2021

33 Months

Male



WACO YALE E880 (P)
WACO EINSTEIN K808 (P)
WACO A871
SIRE: TOOKEY CREEK MALTA (P)
ROWANLEA FREEWAY F68 (P)
TOOKEY CREEK J59 (P)
TOOKEY CREEK G35 (P)

WILGARROON JESTER (AI)(P)
WARENDA SAHARA (P)
WARENDA K121 (P)
DAM: YULGILBAR J277 (P)
MULTIPLE SIRE
YULGILBAR E243
MULTIPLE DAM

Weight _____
ADG _____
Scrotal _____
Fat P8 _____
Rib _____
Fat Rump _____
IMF% _____
EMA _____

Comment:

Lot 65: Sargent is a big upstanding homozygous poll bull, with great length of body and a clean underline.

Purchaser: _____

\$ _____

LOT 66**CLASSIFIED S**

Yulgilbar Scotch S212

Society ID: YUL21MS212**Born:** 13/12/2021

32 Months

Male



(P) HARDIGREEN PARK PHOENIX G154
 VALLEYVIEW LUKE 1546 (P)
 VALLEYVIEW 1359
SIRE: DUNLOP UNGUARDED Q162 (P)
 YARRAWONGA YARDSTICK
 DUNLOP H69
 DUNLOP C1055
 TALGAI GOLD G58 (AI)
 TALGAI JANGO (P)
 TALGAI GEM G21 (P)
DAM: YULGILBAR P013 (P)
 YARRAWONGA VENDETTA (P)
 YULGILBAR H123
 YULGILBAR Y1097

Weight _____
 ADG _____
 Scrotal _____
 Fat P8 _____
 Rib _____
 Fat Rump _____
 IMF% _____
 EMA _____

Comment:

Lot 66: Scotch is a horned bull that is deep bodied, early maturing and has natural doing ability.

Purchaser: _____

\$ _____

LOT 67**CLASSIFIED S**

Yulgilbar Stand Guard S260

Society ID: YUL21MS260**Born:** 30/12/2021

32 Months

Male



(P) HARDIGREEN PARK PHOENIX G154
 VALLEYVIEW LUKE 1546 (P)
 VALLEYVIEW 1359
SIRE: DUNLOP UNGUARDED Q162 (P)
 YARRAWONGA YARDSTICK
 DUNLOP H69
 DUNLOP C1055
 THE LAKES CASABLANCA
 TARA MONARCH
 TARA C750
DAM: YULGILBAR D91
 MULTIPLE SIRE
 YULGILBAR YU101
 Unavailable

Weight _____
 ADG _____
 Scrotal _____
 Fat P8 _____
 Rib _____
 Fat Rump _____
 IMF% _____
 EMA _____

Comment:

Lot 67: Stand Guard is a horned bull with a tropical outlook and desirable skin type. He has natural muscling and great length of body.

Purchaser: _____

\$ _____



Yulgilbar Bulls are Immune ready.



All Bulls have been prepared under the immune ready guidelines.

7in1

Pestiguard

Vibrio

3 day sickness

Bovisheild

Rhino Guard

Botulism

LOT 68

COMMERCIAL

Yulgilbar Tusk T290 (PP)

Society ID: T290
Born: 16/9/2022
23 Months
Male



Unavailable
Unavailable
Unavailable
SIRE: TEXAS/DULVERTON ANGUS SIRE
Unavailable
Unavailable
Unavailable
Unavailable
Unavailable
Unavailable
DAM: MULTIPLE DAM
Unavailable
Unavailable
Unavailable

Weight _____
ADG _____
Scrotal _____
Fat P8 _____
Rib _____
Fat Rump _____
IMF% _____
EMA _____

Comment:

Lot 68: Homozygous poll Sangus bull, with plenty of power and natural thickness, structurally sound and has a quiet nature.

Purchaser: _____
\$ _____

LOT 69

COMMERCIAL

Yulgilbar Tripwire T294

Society ID: T294
Born: 15/10/2022
22 Months
Male



Unavailable
Unavailable
Unavailable
SIRE: TEXAS/DULVERTON ANGUS SIRE
Unavailable
Unavailable
Unavailable
Unavailable
Unavailable
Unavailable
DAM: MULTIPLE DAM
Unavailable
Unavailable
Unavailable

Weight _____
ADG _____
Scrotal _____
Fat P8 _____
Rib _____
Fat Rump _____
IMF% _____
EMA _____

Comment:

Lot 69: Poll Sangus bull, early maturing type with natural muscling and a clean coat type.

Purchaser: _____
\$ _____

LOT 70

COMMERCIAL

Yulgilbar Totem T328 (P)

Society ID: T328
Born: 28/10/2022
22 Months
Male



Unavailable
Unavailable
Unavailable
SIRE: TEXAS/DULVERTON ANGUS SIRE
Unavailable
Unavailable
Unavailable
Unavailable
Unavailable
Unavailable
DAM: MULTIPLE DAM
Unavailable
Unavailable
Unavailable

Weight _____
ADG _____
Scrotal _____
Fat P8 _____
Rib _____
Fat Rump _____
IMF% _____
EMA _____

Comment:

Lot 70: Poll Sangus bull, smooth muscle pattern and very sound. He moves freely, has spring of rib and a strong topline.

Purchaser: _____
\$ _____

LOT 71

COMMERCIAL

Yulgilbar Thriller T356 (P)

Society ID: T356
Born: 1/11/2022
22 Months
Male



Unavailable
Unavailable
Unavailable
SIRE: TEXAS/DULVERTON ANGUS SIRE
Unavailable
Unavailable
Unavailable
Unavailable
Unavailable
Unavailable
DAM: MULTIPLE DAM
Unavailable
Unavailable
Unavailable

Weight _____
ADG _____
Scrotal _____
Fat P8 _____
Rib _____
Fat Rump _____
IMF% _____
EMA _____

Comment:

Lot 71: Poll Sangus bull, soft, smooth muscle pattern, displays natural doing ability and depth of body.

Purchaser: _____
\$ _____

LOT 72**CLASSIFIED S**

Yulgilbar Twilight T169 (P)

Society ID: YUL22FT169**Born:** 17/9/2022

23 Months

Female



CARDONA JACKSON
 CARDONA MAMBO M33 (P)
 CARDONA JASMINE J180 (P)
SIRE: CARDONA PATTERSON P53 (P)
 WACO TREATY (P)
 CARDONA FIREFLY M280 (PS)
 CARDONA FIREFLY I124

WARRILLEE EVEREADY E30 (P)
 DANGARFIELD WHIP CRACKER W211 (PS)
 DANGARFIELD 1823

DAM: YULGILBAR P1171
 Unavailable
 Unavailable
 Unavailable

Weight _____
 ADG _____
 Scrotal _____
 Fat P8 _____
 Rib _____
 Fat Rump _____
 IMF% _____
 EMA _____

Comment:

Lot 72: Twilight is a beautiful female selected specially for the 70th year anniversary sale. This lovely heifer has loads of breed character, great length of body and length from hip to pin. She presents with a tropical outlook, is clean poll, very sound and has good bone for a female. Her sire the ever-consistent Cardona Patterson speaks for himself, and Twilight is a typical type that Patterson has continued to produce over the past 8 years. ("PTIC to Yulgilbar Sidney and will be sold with a Waco Queenslander Straw.")

Purchaser: _____

\$ _____

LOT 73**CLASSIFIED S**

Yulgilbar Sapphire S203 (P)

Society ID: YUL21FS213**Born:** 2/12/2021

32 Months

Female



WACO YALE E880 (P)
 YARRAWONGA FORMIDABLE L872 (P)
 YARRAWONGA G143
SIRE: HARDIGREEN PARK VICE ROY N44 (P)
 HARDIGREEN PARK QUO VADIS H118 (PS)
 HARDIGREEN PARK L13 (P)
 HARDIGREEN PARK H27 (P)

CARDONA MAMBO M33 (P)
 CARDONA PATTERSON P53 (P)
 CARDONA FIREFLY M280 (PS)

DAM: YULGILBAR N037 (AI)(P)
 YULGILBAR COUNCILLOR (AI)(P)
 YULGILBAR K169
 YULGILBAR Z93

Weight _____
 ADG _____
 Scrotal _____
 Fat P8 _____
 Rib _____
 Fat Rump _____
 IMF% _____
 EMA _____

Comment:

Lot 73: Sapphire is another quality poll female; she is very complete, well balanced and is clean through the front and navel with a good coat type. Sire Hardigreen Park Vice Roy has been used heavily in the Yulgilbar stud over the past 5 years and the females he is producing rank among the top of their age group. Dam N037 is also the mother of Lot 43 and has recently weaned a calf. ("PTIC to Diamond H Yarraman, sold with a Murgona Nightcap Straw")

Purchaser: _____

\$ _____

LOT 74**CLASSIFIED S**

Yulgilbar Summer S213 (P)

Society ID: YUL21FS203**Born:** 20/12/2021

33 Months

Female



HARDIGREEN PARK PHOENIX G154 (P)
 VALLEYVIEW LUKE 1546 (P)
 VALLEYVIEW 1359
SIRE: DUNLOP UNGUARDED Q162 (P)
 YARRAWONGA YARDSTICK
 DUNLOP H69
 DUNLOP C1055
 YARRAWONGA ARCHER G280
 GLENN OAKS JABBA J24 (P)
 GLENN OAKS Y58 (P)
DAM: YULGILAR N091 (P)
 THE LAKES NAUTILUS (AI)(P)
 YULGILBAR D11
 THE LAKES L232

Weight _____
 ADG _____
 Scrotal _____
 Fat P8 _____
 Rib _____
 Fat Rump _____
 IMF% _____
 EMA _____

Comment:

Lot 74: Summer is a clean poll, practical female that is long bodied and has great structure. She has great length from hip to pin and width from behind. Sire Dunlop Unguarded has been consistent in producing quality bulls and females since purchased. He has multiple sons in this year's sale draft. ("PTIC to Diamond H Yarraman, Sold with a Cardona Patterson straw")

Purchaser: _____

\$ _____

LOT 75**CLASSIFIED S**

Yulgilbar Serena S201 (P)

Society ID: YUL21FS201**Born:** 1/12/2021

33 Months

Female



WACO YALE E880 (P)
 WACO EINSTEIN K808 (P)
 WACO A871
SIRE: TOOKEY CREEK MALTA (P)
 ROWANLEA FREEWAY F68 (P)
 TOOKEY CREEK J59 (P)
 TOOKEY CREEK G35 (P)
 Unavailable
 Unavailable
 Unavailable
DAM: YULGILBAR M205
 MULTIPLE SIRE
 YULGILBAR H91 (P)
 MULTIPLE DAM

Weight _____
 ADG _____
 Scrotal _____
 Fat P8 _____
 Rib _____
 Fat Rump _____
 IMF% _____
 EMA _____

Comment:

Lot 75: Serena is a big roomy female and will mature into a beautiful cow. Serena is structurally sound and very feminine with a quiet nature. Sire Tookey Creek Malta (deceased) left his mark within the Yulgilbar stud, and many females are active in the stud currently. Dam Yulgilbar M205 has 3 registered calves and grand dam H91 has 7 registered progenies. ("PTIC to Diamond H Yarraman, Sold with a Waco Pioneer straw")

Purchaser: _____

\$ _____

PRESCRIBED CONDITIONS OF SALE BY AUCTION



Property, Stock & Business Agents Act (NSW) 2002,
Part 6, s.77 and Regulations 2003.

Clause 18 (1) – The following conditions are applicable to and in respect of the sale by auction of land or livestock:

- (a) The principal's reserve price must be given in writing to the auctioneer before the auction commences.
- (b) A bid for the seller cannot be made unless the auctioneer has, before the commencement of the auction, announced clearly and precisely the number of bids that may be made by us on behalf of the seller.
- (c) The highest bidder is the purchaser, subject to any reserve price.
- (d) In the event of a disputed bid, the auctioneer is the sole arbitrator and the auctioneer's decision is final.
- (e) The auctioneer may refuse to accept any bid that, in the auctioneer's opinion, is not in the best interests of the seller.
- (f) A bidder is taken to be a principal unless, before bidding, the bidder has given to the auctioneer a copy of a written authority to bid for on behalf of another person.
- (g) A bid cannot be made or accepted after the fall of the hammer.
- (h) As soon as practicable after the fall of the hammer the purchaser is to sign the agreement (if any) for sale.

Clause 18 (2) – The following conditions, in addition to the above, are applicable to and in respect of the sale by auction of residential property or rural land:

- (a) All bidders must be registered in the Bidders' Record and display an identifying number when making a bid.
- (b) Subject to subclause (2A), the auctioneer may make only one vendor bid at an auction for the sale of residential property or rural land and no other vendor bid may be made by the auctioneer or any other person.
- (c) Immediately before making a vendor bid the auctioneer must announce that the bid is made on behalf of the seller or announced "vendor bid".

Clause 18 (2A) – the following conditions, in addition to the above, are applicable to and in respect of the sale by auction of co-owned residential property or rural land or the sale of such land by a seller as executor or administrator:

- (a) More than one vendor bid may be made to purchase the interest of a co-owner
- (b) A bid by or on behalf of an executor or administrator may be made to purchaser in that capacity.
- (c) Before the commencement of the auction, the auctioneer must announce that bids to purchase the interest of another co-owner or to purchase as executor or administrator may be made by or on behalf of the seller.
- (d) Before the commencement of the auction, the auctioneer must announce the bidder registration number of any co-owner, executor or administrator or any person registered to bid on behalf of any co-owner, executor or administrator.

Clause 18 (3) – The following condition, in addition to subclause (1), is applicable to and in respect of the sale by auction of livestock:

The purchaser of livestock must pay the stock and station agent who conducted the auction (or under whom immediate and direct supervision this auction was conducted) or the vendor the full amount of the purchase price:

- (a) if that amount can reasonably be determined immediately after the fall of the banner – before the close of the next business day following the auction, or
- (b) if that amount cannot reasonably be determined immediately after the fall of the hammer – before the close of the next business day following determination of that amount, unless some other time for payment is specified in a written agreement between the purchaser and the agent or the purchaser and the vendor made before the fall of the hammer.



Property, Stock and Business Agents Act (NSW) 2002,
section 78 (3) and Regulations 2003, clause 20 (1)

WARNINGS

PENALTY FOR COLLUSIVE PRACTICES

It is an offence against the Property, Stock & Business Agents Act 2002 for a person to do any of the following as a result of a collusive practice, or to induce or attempt to induce another person by a collusive practice to do any of the following:

- (a) to abstain from bidding, or
- (b) to bid to a limited extent only, or
- (c) to do any other act or thing that might prevent free and open competition.

Severe penalties may be imposed on persons convicted of collusive practices.

Property, Stock & Business Agents Act (NSW) 2002,
section 83 (2) and Regulations 2003, clause 20 (2):

SUCCESSFUL BIDDERS

The actual successful bidder at an auction sale must give to the auctioneer or an employee of the auctioneer:

- (a) the bidder's name, or
- (b) the name of the person on whose behalf the successful bid was made.

PENALTY FOR DUMMY BIDDING

It is an offence against the Property, Stock & Business Agents Act 2002 for a person to do any of the following:

- (a) make a bid as the seller,
- (b) make a bid of behalf of the seller (unless the person is the auctioneer),
- (c) procure another person to make a bid on behalf of the seller.

Any bid made with the dominant purpose of benefitting the seller constitutes a bid made of behalf of the seller.

A bid may be found to be a bid made on behalf of the seller even though the seller did not:

- (a) request the bid, or
- (b) have any knowledge of the bid.

Severe penalties may be imposed on persons convicted of dummy bidding.

OCCUPATIONAL HEALTH AND SAFETY

All persons attending the sale are advised by the seller that the sale may involve a risk of physical harm and/or loss. Livestock, machinery, plant and equipment may be offered for sale and each such item has its own inherent risks that persons attending the sale need to appraise themselves of. All persons attending the sale do so at their own risk. All purchasers of items sold are advised that they must ensure, before each such item is removed from the sale, that it is safe and without risks to health when properly used. The seller does not accept any responsibility for any harm, loss or damage whatsoever and that you enter or attend the sale at your own risk. The seller's agent is instructed by the seller to conduct the sale in the manner directed by the seller with items placed out and submitted for sale as directed by the seller. The seller's agent has no control over any items offered for sale and accepts no responsibility for any harm, loss or damage whatsoever and that you enter or attend the sale at our own risk.

Buyer's Instruction Sheet



YULGILBAR PRODUCTION SALE - FRIDAY 2ND SEPTEMBER 2024

No verbal instructions can be accepted

Name

Address

State Postcode

Phone Fax Email

Stud Name

Stud Number

PIC (property identification code) number

Buyer's Bid Card No.

UHF Channel

Account to be settled by

Agent Phone Number

Lots purchased

Transfer required

Trucking requirements.....

Insure for state period

Any further instructions

.....

.....

.....

.....

.....

.....

.....

.....

.....

Buyer's signature

2024 Yulgilbar Santa Gertrudis Sale Summary

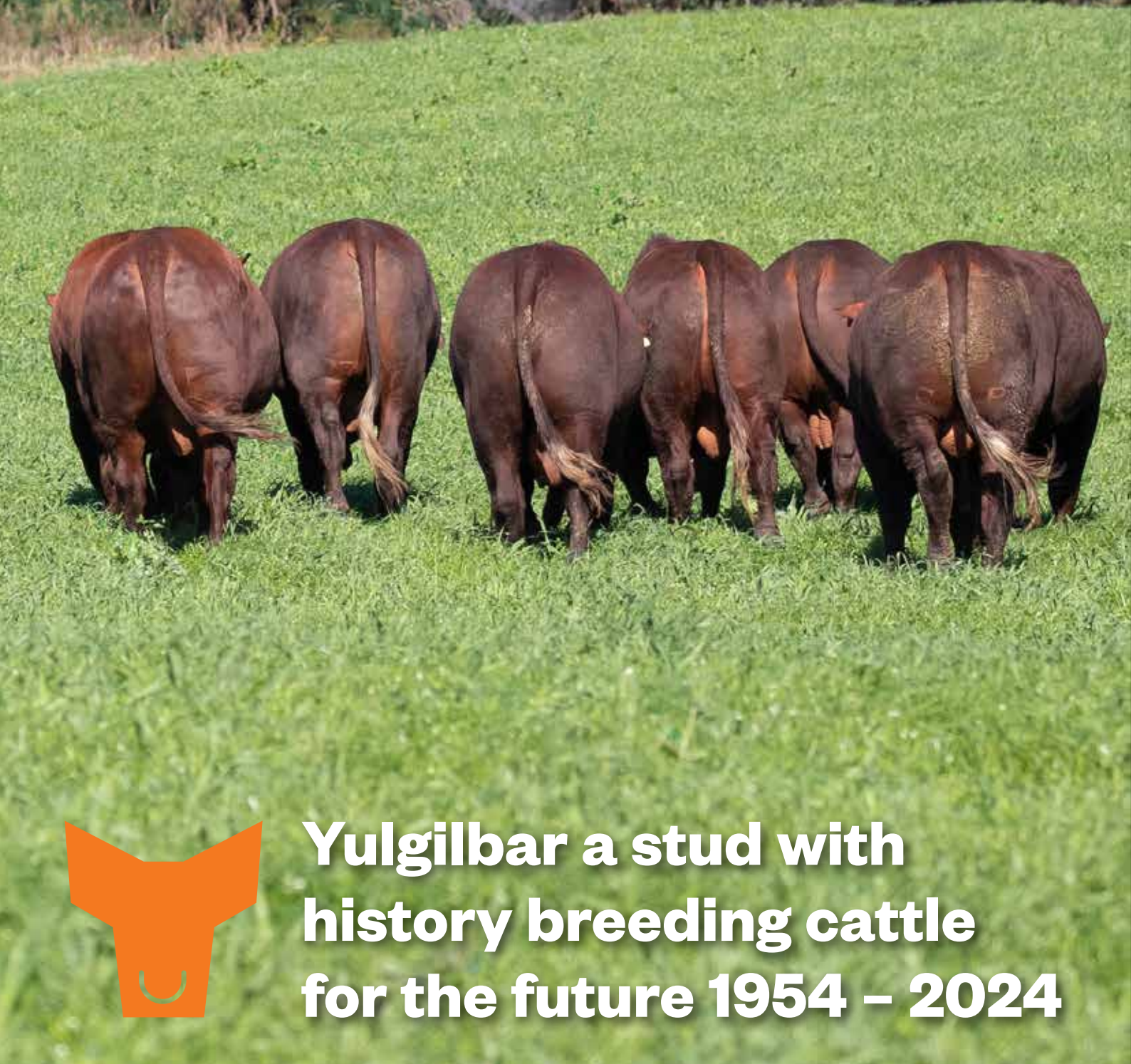
NO.	DESCRIPTION	TOTAL	AVERAGE	TOP PRICE
	Classified Bulls			
	Herd Bulls			
	Classified Females			
	Gross			

Yulgilbar Genetics
Commercial Female Sale
February 2025



Notes





**Yulgilbar a stud with
history breeding cattle
for the future 1954 – 2024**