



Glenlea & Hereward Beef

LONGREACH BULL SALE

11am, Monday 25th March 2024

WQLX Longreach Saleyards, QLD

Lot 4



Lot 26



ON OFFER:

- 23 Charolais Bulls
- 8 Charbray Bulls
- 6 Simbrah Bulls

All Polled. Many PP Polled.

Online Bids:

stocklive.com.au

Selling Agents:

Nutrien Western

WELCOME TO OUR INAUGURAL LONGREACH BULL SALE

*On behalf of Glenlea Beef, the Binny Family
and Hereward Beef, the Horsley Family.*

Glenlea Charolais was established in 1973 with the simple vision to produce more kg of beef from our cows and existing land base using Charolais genetics. That productivity boost still drives our program today. From modest beginnings Glenlea Charolais found innovative pathways to grow through good and tough times.

Our plans are to establish a base in North QLD in the near future. We are now a major Charolais seedstock producer in Australia as Glenlea Beef with the goal to grow more and cement our position as a Charolais Seedstock producer of influence, supplying large lines of quality bulls to northern producers.

In 2021 we purchased the entire herd of Fairfield Charolais females from Lindsey and Belinda Hindle to add to our growing Charolais cow herd now numbering 1000 cows. Glenlea Beef's future aspiration is to grow to be Australia's Largest Charolais Seedstock Business and supply large numbers of bulls throughout QLD and NSW to our existing and new clients.

Our cow herd is located across several properties in sub-tropical coastal far north NSW, an environment that quickly finds out any poor doing cattle, only the best doing females are retained to enter the herd. Two years ago we have added a large herd base in central western NSW at Coonabarabran.

With the addition of Longreach to our sales program, this year we will have 4 bull sales. We will have a further 3 bull sales starting with Winton in July, then Clermont in August and Roma in September.

Our focus is CENTRAL and NORTHERN QUEENSALND with our bull sales, now and into the future. Taking our bulls to our clients!

Our performance recording and genetic testing is a key part of our growth. In 2024 we have over 250 bulls to offer at our sales and out of the paddock!

Our stud cattle are our primary business and selling bulls that add value to our client's bottom line, and the entire supply chain is what we strive for in everything we do with our cattle.

Our after sales service we take very seriously and back our stock with 100% guarantee. Our bulls have thrived in the Winton / Longreach / Boulia / Julia Creek / Hughenden / Blackall districts additionally their new homes in the Clermont area, along with Emerald, Alpha, and further north to Charters Towers and west to Prairie.

Feedback has been very positive with repeat buying the benchmark, we attribute this easy adaptability to having generationally bred cattle with natural doing ability as our number 1 selection criteria, with performance recording and all the other selection and breeding tools we use being applied after that.

The bulls we have on offer in this sale include top sire prospects, which are some of the most outstanding bulls we will have available this year.

Regards,

Roderick Binny





Glenlea & Hereward Beef LONGREACH BULL SALE

11am on Monday the 25th of March 2024

Sale to be held at Longreach Saleyards WQLX and via STOCKLIVE ELITE

37 Bulls On Offer

23 Charolais Bulls | **8 Charbray Bulls** | **6 Simbrah Bulls**
(9 PP Polled) | (5 PP Polled) | (3 PP Polled)

INSPECTIONS

Available from 9am on Saturday 23rd March at Longreach Saleyards. Please call Vendors or Agents to book a time.

VIDEOS

Available to view from Wednesday 20th March on www.stocklive.com.au

AGENTS



Longreach Boyd Curran 0417 707 637
William Beirne 0488 207 837
Blackall Jeremy Barron 0448 576 113
Hughenden Des Cuffe 0448 369 967
Stud Stock Dane Pearce 0439 917 428

Contact Stud Principal
Roderick Binny

P: 0409 911 791

E: rbinny@australiangrassfedmeats.com

W: www.glenleabeef.com.au



Contact Stud Principals
Lance & Tracey Horsley

P: 0428 274 405

Georgie Horsley (Stud Administrator)

P: 0457 271 004

E: admin@herewardbeef.com.au



BULL HEALTH AND FERTILITY

All bulls have been vaccinated for 3 germ blood, 3 day, botulism and 7 in 1. Bulls have all been semen tested, both for motility and morphology.

SUPPLEMENTARY SHEET

Available from Wednesday 20th March from Agents and on StockLive sale listing with updated information such as weights and carcass scans and semen tests. Printed copies available on sale day.

GUARANTEE

All bulls are guaranteed to be able to serve cows naturally at the time of sale and are guaranteed for 6 months from sale day. If a bull should prove infertile or unable to serve cows naturally, provided the inability not caused by injury or disease contracted after sale, the bull will be replaced with a bull of similar quality or credit given for another of our sales by discussion with purchaser. Less salvage value of the bull.

INSURANCE

We recommend you insure your new bulls. Elders can arrange this at fall of hammer sale day.

AGENT REBATE

A rebate of 2% to all licensed agents is available, introducing buyers 24 hours prior to sale and settling accounts within 7 days.

PHONE BIDDING

Phone bidding is available by contacting the agents or vendor prior to sale to arrange for a dedicated agent to call you and assist you with your bidding.

TRANSPORT

Delivery will be coordinated by Nutrien Western.

REFRESHMENTS

Complimentary refreshments will be provided on sale day by Vendors and Nutrien Western. So even if you don't require a bull this year come along, inspect the bulls and enjoy lunch on us!

BULL PROGENY AND TARGET MARKETS

I personally (Rod Binny) make a number of suggestions on individual lots regarding target markets for progeny. Many bulls will fit all markets for progeny as plans change with seasonal and market conditions.

When making these suggestions I take into account physical body type or Phenotype, maturity pattern and doing ability, along with pedigree and EBVs.

We have bred many of these bloodlines for generations and so know how they breed. These suggestions are just another assistance for you to assess the bulls in a sale environment, in a very short space of time, while we have watched them grow and develop over their life to date from birth to sale day.

Having said that, many factors effect breeding outcomes - seasonal conditions from birth to weaning, your cow herd breed make up, management and type of country your cattle run on.

ACCURACY OF CATALOGUE

Every effort is made to be as accurate as possible. However mistakes can happen in the construction of catalogue and printing, we will resolve any issues at best as possible but make no warranty.

HOW TO REGISTER with

STOCKLIVE ELITE

Follow these easy steps to start bidding:



Visit www.stocklive.com.au using your desktop, laptop, iPad, iPhone or Android device. NO App required.



Select the **bid** icon beside the sale you wish to bid on.



If you're new, select **register**, and complete the form with all your details, **accept sale conditions**, select **create bidder registration**.



You will receive an email from StockLive. Select "**Confirm my bidding account**" to set your password and **accept Bidder Account Terms & Conditions and Privacy Policy** followed by **create my account**.



Congratulations! Your StockLive account has been created and your bid request is pending. You will be notified via email when your request to bid has been approved.



Existing users, follow steps 1 & 2, select login, enter your details followed by the **request to bid** icon beside the sale you wish to bid on and then **accept** the terms.



On Sale Day, follow steps 1 & 2, select **enter auction** to watch, listen and purchase when the sale is flashing **LIVE**.



Invoicing and delivery will be carried out as per your registration details by the respective Selling Agents.



1300 259 742

support@stocklive.com.au

www.stocklive.com.au



Glenlea Beef: Background, Bloodlines, Breeding Strategy & Customer Service



Glenlea Beef is now a large seedstock enterprise, totalling 1000 Charolais females. This includes the purchase of the Fairfield herd in 2021. We have been using **Australian bred sires** to continue the evolution of the herd over the last 10 or so years as Australian bred sires are the best adapted to our country and markets. The genetic base of the Glenlea herd is now as diverse as the breed in Australia, with a blend of many bloodlines and that meet our criteria and with the heart being a number of Glenlea cow families that have origins going back over 40 years, with descendants not only directly in our herd but many studs throughout the country.

Our genetic base of the Glenlea herd is now as diverse as the breed in Australia, with a blend of many bloodlines and different phenotypes to produce an Australian type Charolais.

We have a degree of type variation, which is necessary with our range of markets and geographic footprint, from higher growth and yield types for northern markets over bos indicus cows to more moderate, early maturing types that suit more southern markets, but all assessed through the same process for all economic traits. This will be evident through the catalogue and comments, and EBV's on individual lots will highlight this.

Our breeding strategy is to produce powerful performance cattle in a medium to moderate frame score with a complete carcass. By that we mean above average yield, EMA, fat cover and IMF%. Measuring birthweights to be able to assist our bull clients to make the best selections for their operation and maintaining calving ease through BW and early gestation length.

Maternal strength focus on fertility, milking ability with great udders and moderate sized teats for longevity. While we are primary a terminal breed, in northern

markets especially, Charolais x heifers are retained in there 1000's, so as seedstock producers we must always have our customers and in turn their customers in the front of mind in our breeding decisions, as those decisions ripple down the supply chain and leave big impacts, both positive and negative.

Polled genetics have progress in our breed to match horned bloodlines for every economic trait. Our herd still has a number of horned females and these are joined to homozygous polled sires. 98% of our calves born in the last 5 years are polled, many homozygous, and all testing will be available in catalogue or supplementary sheet.

BREEDPLAN is a genetic evaluation tool now over 30 years old and proven across many breeds and countries. We no longer print a detailed general explanation in our catalogues for bull sales or female sales as that information is available at the touch of your phone screen or click of your mouse! We are happy to explain any of the finer points of EBV's as they relate to the Charolais breed and specifically to our cattle, just call and ask! In the comments of each lot, you will see our summary of the EBV's printed for that lot.

Glenlea Beef: Background, Bloodlines, Breeding Strategy & Customer Service



Customer Service is at the heart of what we do, we spend much of our time travelling to clients both commercial and stud to help with a full range of services. We provide many services to all our clients from the most basic to full stud breeding and marketing support. Your success is our success. We are here to assist and work with you and your agents to help you achieve the highest possible price for your Glenlea sired stock.

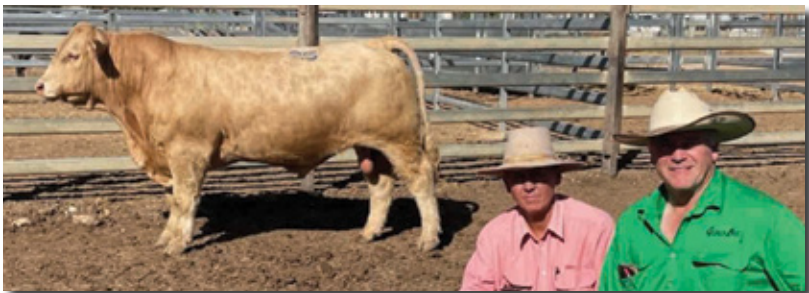
For more information about Glenlea Beef, please contact Stud Principal Roderick Binny on 0409 911 791.



Lindsey Hindle and Rod Binny at Glenlea's Winton bull sale in 2021. Glenlea Beef Purchased the entire Fairfield Stud in 2021.



Rod Binny at Richmond Field Days and Races 2023 with two bulls sold for \$9500 each to repeat buyers Ouchy Alva Pastoral, Julia Creek and RG & IJ Matthews, Viola Station, Julia Creek.



Rod Binny and agent Scott Taylor with Top priced bull from our 4th annual Winton bull sale who sold for \$11,500 purchased by Willsdown Pastoral, Boulia, Willsdown was also volume buyer on the day taking home 11 bulls.

LOT 1



GLENLEA S897A (P)

VERNOLA JUST RIGHT J6E (VIW J6E) (P/S)

SIRE: ALLEDNAW GLENLEA MARLO (AKT M41E) (P)

CANOONA EMMA A3 (IGV A3E) (P)

TATTOO:
GLE S897A

DOB:
06/11/2021

DAM: GLENLEA K143 (GLE K143)

	January (Run 2) 2024 Australasian Charolais Single-Step BREEDPLAN									
	BW	200	400	600	MCW	Milk	SS	EMA	Rump	IMF
EBV	+0.3	+9	+19	+27	+28	+4	+1.0	+1.0	+0.5	-0.3
Acc	42%	41%	38%	42%	35%	28%	44%	28%	29%	27%

COMMENTS: Big strong well-muscled bull to lead off the sale. Great carcass and growth, good bone and extra body length. We selected these "S 2021" bulls to lead off this inaugural sale at Longreach to showcase the powerful bulls Glenlea can offer Western graziers on their doorstep. His sire has been one of our most consistent breeding bulls with many working in the Winton / Longreach / Boulia area. His dam is a big deep bodied cow with good bone and great udder. His daughters would make future breeders to retain or sell as a feature line on A+ or special sale. His steers will have shape and present very well as weaners, and will be first draft away as heavy feeders or bullocks. **DNA Tested PP Polled**

LOT 2



GLENLEA PHOENIX S329 (P) (R/F)

GLENLEA JUST RED (GLE J5E) (P)

SIRE: GLENLEA PHEONIX (GLE P41E) (P)

VALLEY VIEW ESTELLA 416 (VLW H26E) (P)

LITTLE VALLEY GRANDIOSE (GKB G5E) (P)

DAM: ORARA WATERFALL GLENLEA GABBY 1ST (WFA M54E) (P)

JACKSON GABBY (MEJ G111E) (P)

TATTOO:
GLE S329E

DOB:
13/08/2021

January (Run 2) 2024 Australasian Charolais Single-Step BREEDPLAN



	BW	200	400	600	MCW	Milk	SS	EMA	Rump	IMF
EBV	+1.8	+7	+15	+30	+24	+9	+0.5	+1.9	+0.8	+0.4
Acc	67%	61%	59%	56%	52%	39%	69%	44%	44%	42%

COMMENTS: Lovely big, smooth moving, easy doing, PP polled, red factor sire. Deep bodied, easy finishing, ideal for grass finished bullocks. Extra fine hair type for a live export option. Sire is one of our highest growth stud sires and still maintains easy finishing ability in progeny at all ages, so versatile as a sire. His dam is been an excellent producing cow, with big volume body and perfect beef udder.

DNA Tested PP Polled and Sire Verified.

LOT 3



GLENLEA GEDDES S4222 (AI) (P)

SILVERSTREAM ENTICER E30 083090030E (OAN E30E) (P)

SIRE: SILVERSTREAM GEDDES G102 083110102D (OAN G102D) (P)

SILVERSTREAM DOLLY V5 083040005C (OAN Z5C)

LITTLE VALLEY GRANDIOSE (GKB G5E) (P)

DAM: ORARA WATERFALL UMA 1ST (WFA L64A) (P)

ORARA WATERFALL F56Z (WFA F56Z) (P)

TATTOO:
GLE S4222B

DOB:
05/09/2021

January (Run 2) 2024 Australasian Charolais Single-Step BREEDPLAN

	BW	200	400	600	MCW	Milk	SS	EMA	Rump	IMF
EBV	+1.9	+13	+34	+49	+46	+1	+1.6	+2.3	-1.5	-0.3
Acc	62%	60%	58%	62%	55%	52%	66%	47%	50%	46%

COMMENTS: This sire is a powerhouse - carcass, growth and bone! He will produce bullocks out of the plainest brahman x cows. If you're after a sire to add weight to his calves at any age, this bull will suit you. Sire is a very well used sire from NZ known for powerful progeny. Dam is a big volumed, powerful cow, that always weans one of the heaviest calves. *Polled bull.*

LOT 4



GLENLEA PHEONIX S325 (P)

GLENLEA JUST RED (GLE J5E) (P)

SIRE: GLENLEA PHEONIX (GLE P41E) (P)

VALLEY VIEW ESTELLA 416 (VLW H26E) (P)

GLENLEA HILTON (GLE H30E) (P)

DAM: ORARA WATERFALL LAEL (WFA L14E)

PIPECLAY E5E (ROL E5E)

TATTOO:
GLE S325E

DOB:
08/08/2021

January (Run 2) 2024 Australasian Charolais Single-Step BREEDPLAN



	BW	200	400	600	MCW	Milk	SS	EMA	Rump	IMF
EBV	+2.8	+22	+39	+66	+74	+5	+2.2	+1.8	-2.0	+0.1
Acc	70%	63%	62%	58%	53%	42%	73%	46%	47%	45%

COMMENTS: One of our most powerful Pheonix sons we have bred, the body capacity and carcass on this bull is amazing. Put him in a mob with lot 3 and breed the highest performance charolais cross progeny. Great bullock bull, with extra large pelvic capacity, strong sire's head and tremendous bone. His sire is in the top 1% of the breed for growth, as is S325 with top 10% carcass yield as well. His Dam is one of our most powerful, big volumed cows, that has given us a lead sale bull or replacement heifer year after year.

DNA Tested Polled and Sire Verified.

LOT 5



CHALLAMBI GLENEA PANAMA S71 (P)

ELDER'S BLACKJACK 788B M358621 (OAC K788E) (P)

SIRE: CHARNELLE PANAMA (GKA P25E) (P)

CHARNELLE ELLE (GKA E10E) (P)

CHALLAMBI JUNIOR (CHA J11E) (P)

DAM: CHALLAMBI W82 (CHA N82) (P)

TATTOO:
CHA S71A

DOB:
28/07/2021



January (Run 2) 2024 Australasian Charolais Single-Step BREEDPLAN

	BW	200	400	600	MCW	Milk	SS	EMA	Rump	IMF
EBV	+0.8	+16	+30	+46	+36	+5	+1.9	+1.8	+0.5	-0.9
Acc	69%	61%	63%	59%	54%	40%	73%	46%	48%	45%

COMMENTS: Another powerhouse! A slightly early maturing body type, his weaners will have shape and cover, right through to heavy feeders or bullocks off grass. Sire has had semen exported worldwide. Dam is another of our best performance females and great doer, always in good condition, in our JV program with Challambi Charolais.

DNA Tested Polled

LOT 6



CHALLAMBI GLENLEA QANTAS S84 (P)

PALGROVE DOVER (PK D191E) (P)

SIRE: CHALLAMBI QANTAS (CHA Q13E) (P)

CHALLAMBI SHOWGIRL L14 (CHA L14E)

EC NO DOUBT 2022 P M685500 (OAU Z2022E) (P)

DAM: CHALLAMBI O204 (CHA L204) (P)

TATTOO:
CHA S84A

DOB:
24/08/2021



January (Run 2) 2024 Australasian Charolais Single-Step BREEDPLAN

	BW	200	400	600	MCW	Milk	SS	EMA	Rump	IMF
EBV	-1.2	+14	+21	+31	+31	+8	+1.6	+1.8	+0.5	+0.1
Acc	68%	59%	60%	57%	52%	40%	71%	44%	45%	44%

COMMENTS: Change of type to a very smooth shouldered, low BW sire suitable for heifers. Fine coated, moderate bone and with extra finish. Ideal for weaners to domestic target markets, and to finish on grass in the first draft. Sire is a well use A.I. noted for early maturing, easy doing progeny. Dam is a moderate cow with excellent milk and very quiet temperament. *Double Polled bull.*

LOT 7



GLENLEA QUIN S48 (P)

GLENLEA HONOURABLE (VLW H25E) (P)

SIRE: GLENLEA QUINTUS (GLE Q64E) (P)

ORARA WATERFALL GLENLEA NOLANA 10TH (WFA L42E) (P)

RANGAN PARK RIO BRAVO D15 (RAN D15E) (P)

DAM: GLENLEA JANET 91ST (GLE L34E) (P)

GLENLEA JANET 30TH (GLE E10E) (P)

TATTOO:
GLE S48E

DOB:
21/09/2021

January (Run 2) 2024 Australasian Charolais Single-Step BREEDPLAN



	BW	200	400	600	MCW	Milk	SS	EMA	Rump	IMF
EBV	+1.2	+19	+34	+50	+58	+9	+1.5	+2.2	+1.8	+1.1
Acc	67%	60%	57%	60%	51%	44%	57%	40%	46%	39%

COMMENTS: It's rare for a charolais bull to have the extra finish this bull does. Good bone, mid to early maturity pattern, plenty of carcass, fine hair type and tremendous EBV carcass data, with top 1% IMF, top 15% fat cover and EMA. if you're a grass finisher and aim for MSA grids this fellow will get you there with the extra charolais weight. His daughters will be high value heifers as replacements or to sell as feature restocker females. His sire is one of our easiest doing charolais stud sires with breed leading growth and carcass data. His dam is in our top 5 highest weaning weight cows in the herd, super fine hair type, and explosive growth.

DNA Tested PP Polled and Sire Verified

LOT 8



ASHDAN GLENLEA **BLACKJACK S6 (AI) (P)**

GERRARD PASTOR 35Z MC347921 (OAC H7921E) (P)
SIRE: ELDER'S BLACKJACK 788B M358621 (OAC K788E) (P)
 SVY STARTSTRUCK 8X FC382684 (OAC F8E) (P)
 ASCOT GALAXY G131 (JAJ G131E) (P)
DAM: WARRENDINE ISABELLA (WOM P2E) (P)
 GOBONGO ISABELLA D86E (GO D86E) (P)

TATTOO:
ADB S6E
DOB:
12/10/2021

January (Run 2) 2024 Australasian Charolais Single-Step BREEDPLAN										
	BW	200	400	600	MCW	Milk	SS	EMA	Rump	IMF
EBV	-0.2	+13	+30	+49	+32	+10	+2.8	+1.1	+2.1	-0.1
Acc	73%	68%	66%	69%	61%	52%	72%	50%	54%	49%

COMMENTS: Another big strong bull - bone, carcass and growth! Sire is a very well used Canadian Sire with over 250 progeny registered. Dam is big volumed, easy finishing cow, that has produced great calves. This bull has had a shorter preparation than other bulls.

DNA Tested PP Polled and Sire Verified

LOT 9



GLENLEA LANNISTER T33 (P/S)

JC LANNISTER L1 (CJC L1E) (P) (AI)

SIRE: GLENLEA LANNISTER Q401 (GLE Q401E) (P)

WON-CANYA LUCY (RJU L5E) (P) (AI) (R/F)

RANGAN PARK RIO BRAVO D15 (RAN D15E) (P)

DAM: GLENLEA MY GIRL 10TH (GLE L199E) (P)

THW MY GIRL (THW E3E) (P) (AI) (TW)

TATTOO:
GLE T33

DOB:
15/02/22



Expected Average Progeny Value

	BW	200	400	600	MCW	Milk	SS	EMA	Rump	IMF
EBV	+1.7	+17	+37	+47	+49	+7	+1.7	+2.8	+1.8	+0.7

COMMENTS: Our first of the 2022 born bulls and what a powerhouse! Tremendous growth, length of body and carcass. This bull has always been at the lead of his group for growth and is very mobile to cover big country. Ideal bullock bull to add growth and carcass to any type of cow. *Poll / Scur.*

LOT 10



GLENLEA T9A (P)

LT VENTURE 3198 M835612 (OAU J5612E) (P)

SIRE: CHALLAMBI MUSCLES (CHA M15E) (P)

ROSEDALE HIGHNESS G114E (MR G114E) (P)

TATTOO:
GLE 22T9A

DOB:
01/03/2022

DAM: GLENLEA N189 (GLE N189)

	January (Run 2) 2024 Australasian Charolais Single-Step BREEDPLAN									
	BW	200	400	600	MCW	Milk	SS	EMA	Rump	IMF
EBV	-1.9	+12	+25	+20	+19	+7	+0.4	+1.8	+1.6	-0.1
Acc	60%	57%	54%	53%	46%	37%	54%	37%	43%	37%

COMMENTS: Wonderfully shaped carcass with an early to mid-maturity body type. Plenty of finish, this bull's progeny would suit all markets. We have admired him since a calf - strong sires head and good bone. His sire was a great doing mid maturity type and his dam is a powerful cow with extra thickness and carcass.

DNA Tested Polled and Sire Verified

LOT 11



GLENLEA T14A (P)

PARINGA RIO BRAVO D213E (TOL D213E) (P)

SIRE: ELRIDGE LORD (RUU L43E) (P)

ELRIDGE HARMONY (RUU H14E)

DAM: LVH-FAIRFIELD K8 (LVH K8) (P)

TATTOO:
GLE 22T14A

DOB:
02/04/2022



January (Run 2) 2024 Australasian Charolais Single-Step BREEDPLAN

	BW	200	400	600	MCW	Milk	SS	EMA	Rump	IMF
EBV	+0.6	+13	+35	+45	+41	+7	+0.9	+1.0	+1.8	+0.3
Acc	48%	52%	50%	51%	42%	33%	52%	38%	41%	38%

COMMENTS: Tremendous young bull. Growth, carcass, finish - all the profit drivers working for you. Good bone, and fine hair type. This bull is the first in the sale with Fairfield breeding, Glenlea purchased that herd from Lindsey and Belinda Hindle nearly 3 years ago. The Fairfield bulls have been great producing bulls for many years in this region and we will continue to breed those female lines for years to come in the Glenlea beef herd.

DNA Tested PP Polled

LOT 12



GLENLEA LORD T24

PARINGA RIO BRAVO D213E (TOL D213E) (P)

SIRE: ELRIDGE LORD (RUU L43E) (P)

ELRIDGE HARMONY (RUU H14E)

MOONGOOL CASHMERE (DP2 C321E) (P)

DAM: LVH-FAIRFIELD AGINA J37E (LVH J37E)

FERNVALE AGINA (FEN A4E) (D)

TATTOO:
GLE T24

DOB:
16/03/22



Expected Average Progeny Value

	BW	200	400	600	MCW	Milk	SS	EMA	Rump	IMF
EBV	+1.7	+14	+31	+42	+45	+9	+0.6	+1.5	+1.5	+0.4

COMMENTS: One of our favorites in the sale. Gentle nature, extra overall carcass yield, great finish and so sound. Sire is a breed leading sire for all growth traits and several carcass traits as well, and has produced many high selling progeny for Glenlea from the Fairfield bred females. His dam is a great Fairfield cow with a great production record. *Horned Bull.*

LOT 13



GLENLEA QUARTERBACK T702 (AI) (P/S) (R/F)

SILVERSTREAM HOLSTER H187 083120187E (OAN H187E) (P)

SIRE: GLENLEA QUARTERBACK (GLE Q902E) (P)

GLENLEA JANET Z8E (GLE Z8E) (P)

VERNOLA JUST RIGHT J6E (VIW J6E) (P/S)

DAM: ALLEDNAW NUNCIATA M63E (AKT M63E)

ALLEDNAW NUNCIATA G109 (AKT G109E) (P)

TATTOO:
GLE 22T702E
DOB:
03/06/2022

January (Run 2) 2024 Australasian Charolais Single-Step BREEDPLAN



	BW	200	400	600	MCW	Milk	SS	EMA	Rump	IMF
EBV	+1.1	+9	+20	+26	+26	+2	+0.5	+0.9	-1.2	-0.2
Acc	58%	55%	57%	53%	49%	44%	51%	44%	44%	42%

COMMENTS: One of the few red factor charolais bulls in the sale and what a ripper! Big chested, early maturity, extra overall carcass yield - he will cross so well with any bos indicus bred female. His sire breeds consistently thick, early maturing bulls with moderate BW and so joining to heifers is not an issue. His sons always attract extra attention at our sales, and we continue to use him in our A.I. program. His dam is a beautiful cow with volume, overall shape, good bone and perfect udder.
Poll / Scur.

LOT 14



GLENLEA **KODY T1145 (P)**

ADVANCE GRANDSLAM G47 (ADV G47E) (P)

SIRE: ADVANCE KODY K13 (ADV K13E) (P)

ADVANCE GINA B21 (ADV B21E)

PALGROVE CELTIC (PK C632E) (P)

DAM: LVH-FAIRFIELD AVA J42E (LVH J42E) (P)

LVH-FAIRFIELD AVA (LVH C42E) (P)

TATTOO:
GLE 22T1145E

DOB:
15/05/2022



Expected Average Progeny Value

	BW	200	400	600	MCW	Milk	SS	EMA	Rump	IMF
EBV	+1.1	+16	+32	+48	+53	+8	+1.1	+2.5	+0.8	+0.6

COMMENTS: Another outstanding young sire. Great carcass, bone, very docile, extra overall yielding carcass, extra fine hair type and good finish. Sire has produced sale standout sons time and again, just like this fellow. Dam is a big volumed, lovely, big strong Fairfield cow that has another thumping bull calf at foot this season. *Poll / Scur.*

LOT 15



GLENLEA MUSCLES T632 (P)

LT VENTURE 3198 M835612 (OAU J5612E) (P)

SIRE: CHALLAMBI MUSCLES (CHA M15E) (P)

ROSEDALE HIGHNESS G114E (MR G114E) (P)

CHARNELLE LOUIS (GKA L73E) (P)

DAM: GLENLEA ESTELLA 10TH (GLE P25B) (P)

ORARA WATERFALL ESTELLA 4TH (WFA L45A) (P)

TATTOO:
GLE 22T632C

DOB:
14/02/2022



January (Run 2) 2024 Australasian Charolais Single-Step BREEDPLAN

	BW	200	400	600	MCW	Milk	SS	EMA	Rump	IMF
EBV	-1.4	+10	+21	+21	+14	+11	+1.1	+2.4	+1.8	+0.0
Acc	66%	56%	58%	63%	54%	41%	53%	44%	46%	43%

COMMENTS: Early maturing, easy doing young sire with good bone. Moderate BW, ideal for weaners to heavy feeders and grass finished bullocks. Sire has produced early maturing sons with great balance of carcass and finish for many seasons. Dam is a young cow that is producing very well, deep bodied, easy doing type just like her son here. *Polled*

LOT 16



GLENLEA KODY T22 (P)

ADVANCE GRANDSLAM G47 (ADV G47E) (P)

SIRE: ADVANCE KODY K13 (ADV K13E) (P)

ADVANCE GINA B21 (ADV B21E)

LT BLUEGRASS 4017P M686569 (OAU Z4017E) (P)

DAM: LVH-FAIRFIELD AGINA II H85 (LVH H85E) (P)

LVH-FAIRFIELD LILLY (LVH E106E) (P)

TATTOO:
GLE 22T22E

DOB:
12/05/2022



Expected Average Progeny Value

	BW	200	400	600	MCW	Milk	SS	EMA	Rump	IMF
EBV	+0.5	+18	+35	+48	+49	+9	+1.1	+2.4	+1.1	+0.9

COMMENTS: Another great Kody son. Great overall yielding carcass, with finish and good bone, medium maturity and a sire's head with moderate BW - suitable for heifers. Very consistent sire producing one bull after the other like this fellow. Dam is an early maturing Fairfield bred cow with extra thickness and easy doing. His daughters will be keepers. *Double Polled.*

LOT 17



GLENLEA FAIRFIELD **KODY T144 (P)**

ADVANCE GRANDSLAM G47 (ADV G47E) (P)

SIRE: ADVANCE KODY K13 (ADV K13E) (P)

ADVANCE GINA B21 (ADV B21E)

DSK WW ARCHER A20E (DSK A20E) (P)

DAM: LVH-FAIRFIELD DUCHESS (LVH E72E) (P)

AYR JUBERT'S DUCHESS (AYR W179E)

TATTOO:
GLE 22T144E

DOB:
16/02/2022

January (Run 2) 2024 Australasian Charolais Single-Step BREEDPLAN



	BW	200	400	600	MCW	Milk	SS	EMA	Rump	IMF
EBV	+2.0	+17	+33	+46	+51	+4	+0.8	+2.3	+0.5	+0.5
Acc	51%	49%	50%	49%	43%	32%	46%	31%	33%	31%

COMMENTS: Powerful young sire, again by the performance sire Kody. Growth, overall carcass yield, good bone - the comments are the same. Very good temperament and slick hair type. Dam is a tremendous Fairfield cow who just weaned her last calf at 15 years of age, still very sound. This bull's daughters will be in your herd for many years! We always catalogue a couple of very good bulls towards the end of our line-up, this fellow could have been in the first lots.

DNA Tested Polled

LOT 18 MAW GLENLEA MAXIMUM IMPACT T809 (AI)(P)



TATTOO: MAW 22T809E

DOB: 27/06/2022

COMMENTS: Really balanced young sire from every angle. Easy finishing, very fine hair type and like lot 8, has had a shorter sale preparation. This bull's progeny would be equally at home in a grass finishing program or for live export. Sire is well known Australian bred A.I. sire that has many good progeny. Dam is from Palgrove's Estella cow family. **DNA Tested PP Polled and Sire Verified**

SIRE: VENTURON MAXIMUM IMPACT (VE7 M60E) (P)

DAM: ASCOT ESTELLA P809E (JAJ P809E) (P)



January (Run 2) 2024 Australasian Charolais Single-Step BREEDPLAN

	BW	200	400	600	MCW	Milk	SS	EMA	Rump	IMF
EBV	+0.3	+10	+20	+35	+30	+13	+1.0	+2.7	+0.8	-0.3
Acc	69%	61%	60%	59%	53%	45%	57%	43%	48%	42%

LOT 19 TAYLOR GLENLEA TITAN (P)



TATTOO: TC3 22T1E

DOB: 04/02/2022

COMMENTS: Thick bodied, early maturing bull with great carcass and easy finishing. Sire has produced outstanding progeny with thickness and easy finishing traits, just like this bull. Dam is a great producing cow with low BW and extra milking ability. Progeny to suit all markets. Another bull that could've been in first few lots. **DNA Tested PP Polled and Sire Verified**

SIRE: GLENLEA QUICK FIRE (GLE Q66E) (P)

DAM: ASCOT BLUEGRASS L93E (JAJ L93E) (P)



January (Run 2) 2024 Australasian Charolais Single-Step BREEDPLAN

	BW	200	400	600	MCW	Milk	SS	EMA	Rump	IMF
EBV	+0.3	+13	+26	+35	+26	+5	+1.5	+1.5	+1.0	+1.0
Acc	66%	57%	53%	53%	51%	41%	44%	34%	40%	33%

LOT 20 TAYLOR GLENLEA RANGER S8E (P/S)



TATTOO: TC3 S8E

DOB: 30/07/2021

COMMENTS: Long bodied, medium boned, low BW bull with very fine hair type. Suit heifers. This bull had a setback in spring and will present well on sale day. His sire is the best Fairfield bull we have used in the Glenlea program prior to purchasing the Fairfield herd 3 years ago. His dam is from the Palgrove Estella cow family. *Poll / Scur*

SIRE: LVH-FAIRFIELD LONE RANGER (LVH L36E) (P)

DAM: GLENLEA ESTELLA 34TH (GLE K19E) (P)



January (Run 2) 2024 Australasian Charolais Single-Step BREEDPLAN

	BW	200	400	600	MCW	Milk	SS	EMA	Rump	IMF
EBV	-0.1	+12	+25	+24	+30	+4	+2.3	+1.2	-0.1	+0.0
Acc	64%	57%	60%	63%	54%	41%	68%	42%	42%	40%

LOT 21 GLENLEA T152



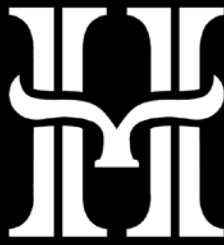
TATTOO: GLE T152

DOB: 12/05/2022

COMMENTS: Early maturing young bull, very balanced carcass with muscle and finish. Another son of Kody and his Dam is another quality Fairfield cow. *Horned.*

SIRE: ADVANCE KODY K13 (ADV K13E) (P)

DAM: FAIRFIELD COUNTESS L307



HERWARD BEEF

LONGREACH. AUSTRALIA

INTRODUCTION

Hereward Beef is an Australian, family owned and operated, seedstock and commercial cattle producing business in Central Queensland. We offer a selection of performance recorded, DNA verified, registered & herd bulls with Charolais, Brahman & Simmental genetics to suit a wide variety of markets.

This sale is our first public offering, featuring a lineup of Homozygous and Heterozygous Polled Charolais, Simbrah & Charbray Bulls.

BUSINESS VALUES

QUALITY | INTEGRITY | INNOVATION

Integrating family values with professionalism is at the core of our business practices. We apply a collaborative approach to cattle breeding with the core values of quality, integrity and innovation. A dedication to data recording, reviewing processes and partnerships with industry leaders ensures quality in all aspects of Hereward Beef.

GENETICS

CHAROLAIS | BRAHMAN | SIMMENTAL

Our breeding and selection values heavily influence the selection of our genetics. Hereward Beef's genetic base comprises of bloodlines from industry leading studs such as Glenlea, Moongool, Karragarra, Meldon Park and Jarravale. Primarily running a Bos Indicus female herd with a European sire base. We believe these breeds offer variety and flexibility for producers looking to increase hybrid vigour in their progeny.

We currently have calves on the ground from our latest AI program who are by a number of international sires. These will be on offer in 2025. ET calves by SCX JEHU (PP) (shown at back of catalogue) will be on offer in 2026 out of Glenlea Chiffon 10th (P) & Glenlea Janet 60th (P), two of the best cows in our donor herd.





HEREWARD BEEF

LONGREACH. AUSTRALIA

BREEDING & SELECTION

TEMPERAMENT | FERTILITY | PERFORMANCE

Our breeding goals are to deliver lines of bulls that match market demand from seedstock producers. As such, we place a high value on temperament, fertility and performance using the analysis of physical traits, performance data, DNA results and EBV's to inform our decisions. Applying these criteria when selecting our stud sires has evidenced; they're adaptable, functional and well performing. These qualities have directly translated to the progeny they are producing and is only improving as we diversify our genetic base.



The Horsley Family at Westech 2023
(missing Ben Horsley)

HEALTH

ANIMAL WELFARE | BIOSECURITY | J-BAS

The health and welfare of our animals is our highest priority, and we strive to ensure our practices and programs are well above industry standards.

Our bulls have all been treated for Tick Fever, 3 Day, 7in 1, Botulism, and Vibrio. They have also passed veterinary assessment for structural soundness and semen tests for both morphology and motility.

Hereward Beef is J-BAS 7 accredited.

CONTACT

 admin@herewardbeef.com.au

Lance & Tracey Horsley (Stud Principals)



0428 274 405

Georgie Horsley (Stud Administrator)

0457 271 004



Hereward Station

59203 Landsborough Hwy

LONGREACH QLD 4730

LOT 22 HEReward MUSCLES T332A (P) (R/F)



SIRE: CHALLAMBI MUSCLES (AI) (ET) (P)
DAM: FAIRFIELD GLENLEA Q901 - *Pure Charolais*

Data Supplementary Sheet available on Stocklive,
or via any agent listed, by Friday 22nd March.

DNA Tested PP Polled and Sire Verified.

CHAROLAIS
TATTOO: HWD 22T332A
DOB: 5/03/2022
HORN: Polled

COMMENTS: The first of the Hereward bred Charolais Bulls. Long bodied young sire, good carcass with lovely skin type and good finish, very docile. During photos we had a shower of rain, but this did show his light red coat color. His sire has produced many excellent bulls of the type whose progeny can suit all markets. Dam was a first calving Fairfield bred heifer that did a great job raising this bull.

LOT 23 HEReward P8 T340A (P) (R/F)



SIRE: CHALLAMBI MUSCLES (AI) (ET) (P)
DAM: FAIRFIELD GLENLEA Q281 - *Pure Charolais*

Data Supplementary Sheet available on Stocklive,
or via any agent listed, by Friday 22nd March.

DNA Tested PP Polled and Sire Verified.

CHAROLAIS
TATTOO: HWD 22T353A
DOB: 18/02/2022
HORN: Polled

COMMENTS: So similar in type to the previous lot, easy to see they are brothers. All same comments apply. Dam was another Fairfield / Glenlea bred first calver. Lovely loose hide and very gentle temperament, as is lot 22.

LOT 24 HEReward P8 T342A (P) (R/F)



SIRE: MOONGOOL P8 (P)

DAM: HEReward BRAHMAN STUD DAM

Data Supplementary Sheet available on Stocklive,
or via any agent listed, by Friday 22nd March.

DNA Tested PP Polled and Sire Verified.

CHARBRAY
TATTOO: HWD 22T342A
DOB: 14/04/2022
HORN: Polled

COMMENTS: Lovely deep apricot coloured young bull. He is developing very well. Very good temperament, tropical skin, carcass and finish. Sire is a quality Moongool bull and dam is one of our best young cows. It's rare to find Charbray bulls that are tested PP polled and sire verified - our breeding goals are to deliver lines of bulls that match market demand from seedstock producers.

LOT 25 HEReward T350 (P) (R/F)



SIRE: GLENLEA FAIRFIELD STUD SIRE

DAM: HEReward CHARBRAY STUD DAM

Data Supplementary Sheet available on Stocklive,
or via any agent listed, by Friday 22nd March.

DNA Tested PP Polled

CHARBRAY
TATTOO: HWD 22T350
DOB: 24/02/2022
HORN: Polled

COMMENTS: Quality bull! Neat underline, great skin, early maturing and well balanced carcass with finish, very docile. Sire is a Glenlea / Fairfield bull in a multi sire group. Dam is another of our best producing young cows. Where do you find DNA tested PP Polled Charbray bulls? Hereward Beef!

LOT 26 HEReward T346



SIRE: KARRAGARRA STUD SIRE
DAM: HEReward SIMBRAH STUD DAM

Data Supplementary Sheet available on Stocklive,
or via any agent listed, by Friday 22nd March.

DNA Tested PP Polled. Homozygous Red (e/e).

SIMBRAH
TATTOO: HWD T346
DOB: 9/02/2022
HORN: Polled

COMMENTS: The first of the Simbrahs and what a classy young F2 sire. Thick, early maturing, very docile. Sire is a Karragarra Stud sire and dam is an outstanding F1 Polled Simbrah cow. This bull was on display at Westec in September last year and was admired by many at that event.

LOT 27 HEReward T517



SIRE: KARRAGARRA STUD SIRE
DAM: HEReward BRAHMAN STUD DAM

Data Supplementary Sheet available on Stocklive,
or via any agent listed, by Friday 22nd March.

DNA Tested Polled. Homozygous Red (e/e).

SIMBRAH
TATTOO: HWD T517
DOB: 20/08/2022
HORN: Polled

COMMENTS: Classic Simbrah type F1, deep and square, slick skin, ideal underline and sheath angle. Easy doing, early maturing type to handle the rougher country. Polled Karragarra stud sire. Dam is a terrific young cow.

LOT 28 HEReward PASSTIME T271



SIRE: KARRAGARRA PASSTIME P129
DAM: HEReward BRAHMAN STUD DAM

Data Supplementary Sheet available on Stocklive,
or via any agent listed, by Friday 22nd March.

DNA Tested PP Polled and Sire Verified. Homozygous Red (e/e).

SIMBRAH

TATTOO: HWD T271

DOB: 10/08/2022

HORN: Polled

COMMENTS: Another bull caught in the shower on photo taking day! Lovely deep red F1 bull. Very balanced bull, out of first calver so heifer safe. Just a slight mark of white on his forehead. Sired by Passtime, one of our leading Karragarra sires, and his dam is another of our favorite stud cows.

LOT 29 HEReward T612



SIRE: KARRAGARRA STUD SIRE
DAM: HEReward BRAHMAN STUD DAM

Data Supplementary Sheet available on Stocklive,
or via any agent listed, by Friday 22nd March.

DNA Tested Polled. Homozygous Red (e/e).

SIMBRAH

TATTOO: HWD T613

DOB: 27/06/2022

HORN: Scurred

COMMENTS: Eye catching bull, with classic Simbrah white blaze forehead. Ideal underline and sheath angle, slick skin, balanced carcass. Karragarra Stud sire in multi sire joining. Dam is an outstanding young cow with this bull her first calf.

LOT 30 HEReward PASSTIME T612



SIRE: KARRAGARRA PASSTIME P129
DAM: HEReward BRAHMAN STUD DAM

Data Supplementary Sheet available on Stocklive,
or via any agent listed, by Friday 22nd March.

DNA Tested Polled and Sire Verified. Red (E+/e).

SIMBRAH

TATTOO: HWD T612

DOB: 02/03/2022

HORN: Polled

COMMENTS: Deep, square, early maturing sire with good carcass, great underline and skin, solid red. Sired by Passtime and even though has small scurs has been DNA Tested Polled.

LOT 31 HEReward T436



SIRE: KARRAGARRA STUD SIRE
DAM: HEReward BRAHMAN STUD DAM

Data Supplementary Sheet available on Stocklive,
or via any agent listed, by Friday 22nd March.

DNA Tested Polled. Red (E+/e).

SIMBRAH

TATTOO: HWD T436

DOB: 06/08/2022

HORN: Polled

COMMENTS: Lovely shaped bull - carcass, length and docile. Youngest bull in the sale and always stood out in the mob. Karragarra Sired and Dam we think has an outstanding future as this was her first calf, so heifer safe. F1 bull.

LOT 32 HEReward P8 T341A (P) (R/F)



SIRE: MOONGOOL P8 (P)

DAM: HEReward CHARBRAY STUD DAM

Data Supplementary Sheet available on Stocklive,
or via any agent listed, by Friday 22nd March.

DNA Tested PP Polled and Sire Verified.

CHARBRAY
TATTOO: HWD 22T341A
DOB: 23/01/2022
HORN: Polled

COMMENTS: Back onto the Charbray bulls and another PP Polled sire. Great type, early maturing, great carcass, good bone, very neat underline. Sire is Moongool P8 and dam is another very good cow in the stud herd. Photo taken after a shower on photo day, he is solid apricot.

LOT 33 HEReward MARLO T431 (P/S) (R/F)



SIRE: GLENLEA MARLO Q507A (P)

DAM: HEReward CHARBRAY STUD DAM

Data Supplementary Sheet available on Stocklive,
or via any agent listed, by Friday 22nd March.

DNA Results Pending.

CHARBRAY
TATTOO: HWD 22T431
DOB: 24/06/2022
HORN: Scurred

COMMENTS: Really deep bodied, easy doing Charbray bull. Docile, balanced carcass, good sire's head. Glenlea / Fairfield sire and out of a stud Hereward cow. *Pol / Scur.*

LOT 34 HEReward P8 T347A (P) (R/F)



SIRE: MOONGOOL P8 (P)

DAM: HEReward CHARBRAY STUD DAM

Data Supplementary Sheet available on Stocklive,
or via any agent listed, by Friday 22nd March.

DNA Tested Polled and Sire Verified.

CHARBRAY
TATTOO: HWD 22T347A
DOB: 16/03/2022
HORN: Polled

COMMENTS: Another good long bodied apricot Charbray bull. Good carcass with finish and gentle nature. Sired by the Moongool P8 sire and again out of a big volume, medium framed cow in the stud herd at Hereward.

LOT 35 HEReward P8 T339A (P) (R/F)



SIRE: MOONGOOL P8 (P)

DAM: HEReward CHARBRAY STUD DAM

Data Supplementary Sheet available on Stocklive,
or via any agent listed, by Friday 22nd March.

DNA Tested Polled and Sire Verified.

CHARBRAY
TATTOO: HWD 22T339A
DOB: 06/06/2022
HORN: Polled

COMMENTS: Classy young Charbray bull, so similar to previous lot - weight for age, carcass and finish. Sired by the same sire and out of strong gentle cow.

LOT 36 HEReward P8 T340A (P) (R/F)



SIRE: MOONGOOL P8 (P)

DAM: HEReward BRAHMAN STUD DAM

Data Supplementary Sheet available on Stocklive,
or via any agent listed, by Friday 22nd March.

DNA Tested PP Polled and Sire Verified.

CHARBRAY
TATTOO: HWD 22T340A
DOB: 17/04/2022
HORN: Polled

COMMENTS: Really eye-catching bull with good carcass, good finish, strong polled head and muzzle, DNA Tested PP Polled. This fellow being our second last bull, shows depth in our offering in this sale. Sire by Moongool P8 and out of a big strong polled brahman stud cow.

LOT 37 HEReward QUALIFIER T593A (P) (R/F)



SIRE: LVH-FAIRFIELD QUALIFIER (P)

DAM: HEReward CHARBRAY STUD DAM

Data Supplementary Sheet available on Stocklive,
or via any agent listed, by Friday 22nd March.

DNA Tested PP Polled and Sire Verified.

CHARBRAY
TATTOO: HWD 22T593A
DOB: 27/06/2022
HORN: Polled

COMMENTS: This fellow is a terrific young sire, less than 20 months in photo, 21 months sale day. He got a shower of rain during photos. Growth, carcass and finish, PP Polled and sire verified. Sired by Fairfield Qualifier and out of another excellent Hereward Stud cow. We are proud to offer our polled apricot coloured Charbrays as our first Bulls produced to sell at Auction.

REFERENCE SIRE: GLENLEA PHEONIX (P) (R/F) (GLE P4IE)



Photo at 24 months.

Big strong large footed bull, deep bodied with plenty of looseness of hide and extra fine hair type. Fast becoming our highest growth bull, top 1% of breed for all growth traits, all positive Carcass traits, PP polled and red.

SIRE: GLENLEA JUST RED (GLEJ5E) (AI) (ET) (P) (R/F)

DAM: VALLEY VIEW ESTELLA 416 (VLWH26E) (AI) (ET) (P)

January (Run 2) 2024 Australasian Charolais Single-Step BREEDPLAN										
	BW	200	400	600	MCW	Milk	SS	EMA	Rump	IMF
EBV	+2.8	+24	+48	+71	+84	+9	+1.7	+2.6	-0.1	+0.2
Acc	78%	72%	72%	70%	63%	53%	75%	54%	59%	52%

REFERENCE SIRE: CHALLAMBI MUSCLES (AI) (ET) (P) (CHA MISE)



Photo at 4 years running with cows.

Purchased originally as a heifer bull he has proven himself in that role, and breeds enough carcass and performance out of many cows that his sons always attract attention at our sales.

SIRE: LT VENTURE 3198 (OAU J5612E) (P)

DAM: ROSEDALE HIGHNESS G114E (MR G114E) (P)

January (Run 2) 2024 Australasian Charolais Single-Step BREEDPLAN										
	BW	200	400	600	MCW	Milk	SS	EMA	Rump	IMF
EBV	-2.6	+18	+34	+41	+36	+12	+1.9	+1.5	+2.4	0.0
Acc	80%	76%	76%	76%	69%	63%	78%	60%	67%	60%

REFERENCE SIRE: ELRIDGE LORD (AI) (P) (R/F) (RUU L43E)



Trait leading sire for growth, fat cover with moderate BW and excellent EMA. Progeny are docile and can finish at any age so have great market versatility. Really breaks the rules in opposing traits of growth and finish. His daughters are coming through with perfect udders, extra growth and plenty of milk. Top 1% all growth traits, Top 10% Fat Cover.

SIRE: PARINGA RIO BRAVO D213E (TOL D213E) (P)

DAM: ELRIDGE HARMONY (RUU H14E)



January (Run 2) 2024 Australasian Charolais Single-Step BREEDPLAN

	BW	200	400	600	MCW	Milk	SS	EMA	Rump	IMF
EBV	+2.2	+22	+57	+79	+75	+10	+1.0	+1.6	+2.8	+1.0
Acc	76%	82%	84%	85%	73%	63%	88%	68%	72%	68%

REFERENCE SIRE: ADVANCE KODY K13 (P) (R/F) (ADV K13E)



Big strong Polled sire that has produced many great bulls in the Fairfield herd. High growth progeny with good bone, slick skin and fine hair, with great carcass and ability to finish. Sire was a champion at EKKA and a very high growth bull. Dam was from the royal show Champion Gina cow family. EBVs Top 10% of breed EMA, top 15% Beef Yield and IMF%.

SIRE: ADVANCE GRANDSLAM G47 (ADV G47E) (P)

DAM: ADVANCE GINA B21 (ADV B21E)



January (Run 2) 2024 Australasian Charolais Single-Step BREEDPLAN

	BW	200	400	600	MCW	Milk	SS	EMA	Rump	IMF
EBV	+2.2	+22	+44	+67	+77	+9	+0.5	+3.0	+0.4	+1.0
Acc	60%	65%	70%	64%	56%	43%	76%	51%	52%	51%

SCX JEHU 233E

Highest Priced Charolais bull ever sold
at Auction in Canada for \$CAD245,000.



*Photos at
5 years of age.*

- Proven Breeding Bull with daughters in production.
- Sons have sold to \$CAN80,000.
- Homozygous Polled (PP)
- NZ Semen Rights owned by Silverstream Charolais.



Australian Semen
Rights Owned by
Glenlea Beef.

We welcome our Australian partners in JEHU:
Charnelle Charolais - QLD semen rights
Waterford Charolais - VIC semen rights.
Challambi Charolais - NSW with an exclusive semen package.

Our first sons of JEHU will be offered at WINTON in 2024!



CHAROLAIS

LOT
19



CHARBRAY

LOT
33