

GLENLEA BEEF
presents our

Bricks and Mortar
FEMALE SALE

Friday 8th December 2023

1pm NSW & VIC time. 12noon QLD time.

70 Charolais
Females



Lot 28

Sale to be held online with AuctionsPlus with Lots 1 to 9 sold by Livestream Auction.
All other lots offered under normal AuctionsPlus sales method.

All cattle will be penned morning of the sale from 9am at "Pinedock", Clovass Road, Casino
or inspections any time by appointment prior to sale day.

WWW.GLENLEABEEF.COM.AU

SCX JEHU 233E

Highest Priced Charolais bull ever sold
at Auction in Canada for \$CAD245,000.



*Photos at
5 years of age.*

- Proven Breeding Bull with daughters in production.
- Sons have sold to \$CAN80,000.
- Homozygous Polled (PP)
- NZ Semen Rights owned by Silverstream Charolais.



Australian Semen
Rights Owned by
Glenlea Beef.

We welcome our Australian partners in JEHU:

Charnelle Charolais - QLD semen rights

Waterford Charolais - VIC semen rights.

Challambi Charolais - NSW with an exclusive semen package.

Embryos For Sale.

Welcome to our 2023 Female Sale



For our “Bricks and Mortar Sale” we have assembled a great draft of females.

Our focus in recent years has been to provide purchasers from our female sales with the ability to put together lines of females to start a stud herd or to grow an existing one. Glenlea Beef also provides the after sales service to help develop your breeding program and, when you have progeny to sell, to assist with marketing those progeny through our various sales both privately and at Auction.

This sale is a fantastic opportunity to invest to position yourself to take advantage of the next upswing in the cattle cycle. We have seen where the market has been and it will return to those higher levels again in future. Breeding stud cattle is a 3 year cycle from joining to birth, weaning, growing out and sale preparation. So investing in leading genetics to produce progeny to sell in the next two years is putting yourself in a position to realise super profits and pleasure from breeding great cattle.

This sale is full of highlights, outstanding individuals and cow families.

I look forward to discussing animals with prospective purchasers, any of our special sale offers that apply in the sale or any other aspect of your breeding, management and marketing program for you herd. The whole Glenlea Beef team is here to assist in any way we can to improve your financial returns and enjoyment of breeding great Charolais Cattle.



Regards,
Roderick Binny
Glenlea Beef

Glenlea Special Offers Terms & Conditions

SHOW RING PRIZE MONEY

1. Royal shows means Capital city Royal Shows only.
2. A quality high resolution photo with exhibitor and championship ribbon on animal must be provided to Glenlea with full permission to reproduce.
3. Any definition of shows as Regional or Local is at Glenlea's sole discretion and final say.
4. 50% of prize money will be provided as a cash payment, in person with a high quality photo of presentation and 50% will be provided as credit at any of Glenlea's future sales.

INTEREST FREE TERMS

1. To approved purchasers only by contacting Roderick Binny a minimum of 5 days prior to sale to discuss and arrange. 50% of Auction price due under normal agent terms 7 days. Balance due 10 February 2024.
2. No terms if not arranged prior to sale.
3. Invoices will be issued January 25th 2024 and if not paid by due date of February 10th interest will apply from sale date at 12% pa rate.
4. No transfers of registrations will occur until full payment is made.

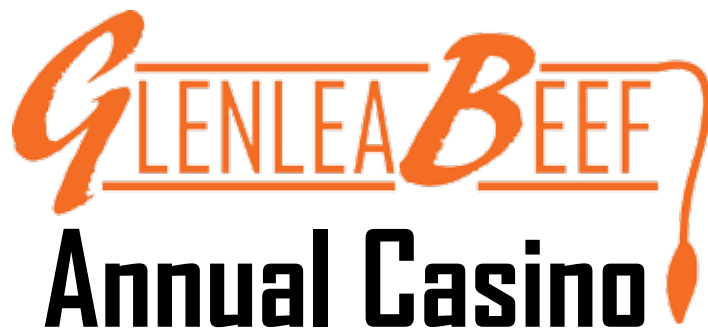
TRANSPORT SUBSIDIES ON SALE CATTLE, NORTH AND SOUTH OF CASINO

Delivery will be co-ordinated by nominated sale agents. These are maximum charges, Glenlea will pay any over this and if less those savings will be passed on to purchaser.

- Maximum charges for delivery to Albury / Wodonga for southern buyers is \$250 per cow / calf and \$200 per individual lot.

- Delivery to other major centres may be possible along the southern route.

- To Toowoomba for northern buyers that will be \$200 per cow / calf and \$150 per individual lot. Feeding charges may apply while waiting for transport, this is modest and will be charged direct by Pinedock or settling agent to purchasers' account.



Annual Casino Female Sale

Friday 8th December 2023

1pm NSW & VIC
12noon QLD

Online Only via AuctionsPlus.

 AuctionsPlus
Buy and Sell stock nationally

9 Halter Broken Elite Heifers

These first 9 lots will be offered by open auction.

15 Cows & Calves

36 PTIC Heifers

10 Unjoined Heifers

Inspections anytime by appointment. Cattle will be penned for inspection on the morning of the sale from 9am at "Pinedock", Clovass Road, Casino.

Videos will be available on AuctionsPlus prior to sale.

Contacts



Stud Principal - Roderick Binny

P: 0409 911 791 E: rbinny@australiangrassfedmeats.com

**Pinedock
Pastoral**

For independent assessment on any of the sale offering call

James Dockrill P: 0400 387 116

For special insight into the Waterford heifer's cow families and history call

Sapphire Halliday P: 0447 117 676



Agents: Ray White Casino

Andrew Summerville P: 0429 620 362

Nick Fuller P: 0484 200 101

Josh Sawtell P: 0499 244 919

Isaac Young - 0428 441 575

Phone bidding

Available direct with agents.

We recommend this if you are in a marginal internet service area.

WWW.GLENLEABEEF.COM.AU

Conditions of Sale

HEALTH AND FERTILITY: All females are sold as fertile. Either Joined, PTIC or unjoined. We have a number of cows and calf lots that maybe too early to detect in calf on sale day. These will be sold as joined and a recommendation to run with a bull when arrived at purchaser's property. More details will be provided in the supplementary sheet prior to sale.

Any animal not conceiving within 6 months of purchase, the procedure will be a vet examination then discussion with Glenlea Beef. We will either arrange to return the animal to get pregnant at one of our properties and then return to purchasers at 50/50 share cost of transport or find another solution by mutual agreement if the first solution is not practical due to distance or other factors. This does not include animals that are injured or suffering disease contracted after the sale. We strongly recommend you insure your purchases.

On rare occasion a female tested and sold as PTIC may lose the pregnancy after sale, due to transport stress, change of environment or other factor, this is at purchaser's risk.

VACCINATIONS: All females have had 7 in 1, Tick Fever, Dectomax injectable, Ausmectin Backline and Mutli min. All calves have had 5 in 1 and Tick fever.

INSURANCE: We recommend you insure your new purchases. Ray White Casino can help you can arrange this at fall of hammer sale day.

AGENT REBATE: A rebate of 1% to all licensed agents is available, introducing buyers 24 hours prior to sale and settling accounts within 7 days.

REFRESHMENTS: Light refreshments will be provided by Glenlea at "Pinedock" the morning of sale.

TRANSPORT: Delivery will be co-ordinated by nominated sale agents. Maximum charges for delivery to Albury for southern buyers is \$250 per cow/calf and \$200 per individual lot. To Toowoomba for northern buyers that will be \$200 per cow/calf and \$150 per individual lot. Feeding charges may apply while waiting for transport, this is modest and will be charged direct by "Pinedock" or settling agent to purchasers' account.

PHONE BIDDING: Phone bidding is available by contacting the agents or Glenlea prior to sale to arrange for a dedicated agent to call you and assist you with your bidding.

ACCURACY OF CATALOGUE: Every effort is made to be as accurate as possible. However mistakes can happen in the construction of catalogue and printing, we will resolve any issues at best as possible but make no warranty as to accuracy. If DNA testing has not be done on any lot Glenlea make no warranty as to DNA verification.

CHAROLAIS BREEDPLAN: We no longer print detailed explanations of BREEDPLAN in our catalogues. All information explaining BREEDPLAN and how to use it to help with your selections is available at the click of your mouse. Of particular relevance is that Charolais EBV's can only be compared within the Charolais breed. For instance the average 600 Day weight EBV in Charolais is +33kg for the average for Angus is +110kg . This is not a reflection of Angus having a higher 600-day growth, rather they have a much lower base breed growth and an average animal needs a 600 weight above the base of +110kg above the base of Angus where as Charolais are a much higher growth breed that has a higher base weight, therefore an average Charolais only needs to be +33kg above the base to be average for the Charolais breed. This is often confused when trying to compare breeds and performance. The key point is don't compare EBV's across breeds as they are only able to comparable within each breed.



Can't make the sale?
Register in just seven easy steps and log onto AuctionsPlus to bid from anywhere on your phone, tablet or desktop.

- 1 REGISTER ONLINE**
FREE once off registration for all auctions.
- 2 COMPLETE BUYER INDUCTION**
The buyer induction will help you understand the roles and responsibilities of everyone on the AuctionsPlus system.
- 3 VIEW CATALOGUE**
Stock history, photos, videos, pedigrees and more. You can also favourite lots you are interested in.
- 4 ENTER AUCTION**
Log into the auction anytime, anywhere and bid on your mobile, tablet or computer. Auctions can end after 30 minutes so get in early.
- 5 Auto bid**
Can't stay for the whole sale? Set your maximum bid on the lot that you want to purchase and let the computer bid for you.
- 6 CONTACT SELLER**
If successful, contact selling agent to arrange payment and delivery. Or if you are the highest bidder you can log into your dashboard to meet the reserve.
- 7 PAYMENT**
Via the selling agent's terms and conditions.
- 8 DELIVERY**
Arrange transport of livestock at your expense.

*Contact AuctionsPlus on (02) 9262 4222
or www.auctionsplus.com.au*

~ Glenlea Beef ~

Background, Bloodlines, Breeding Strategy & Customer Service

Australian Charolais breeders have embraced performance recording as other countries have reduced their efforts, I have seen this first hand in north America. Our data now is more accurate and detailed, making looking overseas less likely to add genetics that take your herd forward in genetic development than using **Australian evolved genetics that are the best in the world for our environments and markets** with large amounts of individual data to help us as seedstock producers, identify positive influences.

Glenlea beef is now a large seedstock enterprise, including JV herds total over 500 Charolais females. We have been using **Australian bred sires** to continue the evolution of the herd over the last 10 to 15 years with limited use of overseas sires. Where you will see overseas as well Australian sires in the Glenlea herd is in our E.T. program using **exclusive proven sires** in very specific planned matings to produce elite progeny from our highest genetic merit females, our donors!

Our genetic base of the Glenlea herd is now as diverse as the breed in Australia, with a blend of many bloodlines and different phenotypes to produce an Australian type Charolais. We have a degree of type variation, which is necessary with our range of markets and geographic footprint, from higher growth and yield types for northern markets over bos indicus cows to more moderate, early maturing types that suit more southern markets, but all assessed through the same process for all economic traits. This will be evident through the catalogue and comments, and EBV's on individual lots will highlight this.

Our breeding strategy is to produce powerful performance cattle in a medium to moderate frame score with a complete carcass. By that we mean above average yield, EMA, fat cover and IMF%. Measuring birthweights to be able to assist our bull clients to make the best selections for their operation and maintaining calving ease through BW and early gestation length.

Maternal strength focus on fertility, milking ability with great udders and moderate sized teats for longevity. While we are primary a terminal breed, in northern markets especially, Charolais x heifers are retained in there 1000's, so as seedstock producers we must always have our customers and in turn their customers in the front of mind in our breeding decisions, as those decisions ripple down the supply chain and leave big impacts, both positive and negative.

Polled genetics have progress in our breed to match horned bloodlines for every economic trait. Our herd still has a number of horned females and these are joined to homozygous polled sires. 98% of our calves born in the last 5 years are polled, many homozygous, and all testing will be available in catalogue or supplementary sheet.

BREEDPLAN is a genetic evaluation tool now over 30 years old and proven across many breeds and countries. We no longer print a detailed general explanation in our catalogues for bull sales or female sales as that information is available at the touch of your phone screen or click of your mouse! We are happy to explain any of the finer points of EBV's as they relate to the Charolais breed and specifically to our cattle, just call and ask! In the comments of each lot, you will see our summary of the EBV's printed for that lot.

Customer Service is at the heart of what we do, we spend much of our time travelling to clients both commercial and stud to help with a full range of services. We provide many services to all our clients from the most basic to full stud breeding and marketing support. Your success is our success. We are here to assist and work with you and your agents to help you achieve the highest possible price for your Glenlea sired stock.

~ Reference Sires ~

GLENLEA JUST RED (AI) (ET) (P) (R/F)

TATTOO: GLE J5E
DOB: 06/02/2013
COLOUR: Red Factor



| October 2023 Australasian Charolais BREEDPLAN Analysis | | | | | | | | | | | | |
|--|--------|------|------|-----|-----|-----|------|------|---------|------|------|------|
| | CE Dir | GL | BW | 200 | 400 | 600 | Milk | SS | Carc Wt | EMA | Rump | IMF |
| EBV | -16.6 | -1.8 | +2.8 | +22 | +41 | +59 | +5 | +0.3 | +28 | +1.1 | +1.3 | +0.6 |
| Acc | 68% | 83% | 87% | 79% | 79% | 80% | 66% | 82% | 69% | 62% | 68% | 58% |

SIRE: RANGAN PARK REDEMPTION E42 (RAN E42E) (AI) (ET) (P) (R/F)

DAM: GLENLEA JANET U6E (GLE U6E) (R/F) (P) (TW)

COMMENTS: The original GLENLEA RED sire. Homozygous Red and Polled, his progeny are all apricot colour and polled out of white charolais cows. His genetic value goes far beyond hide colour, a trait leader for all growth traits, with very positive fat cover so progeny fatten quickly.

Photo at 7 years running with cows.

GLENLEA PHEONIX (P) (R/F)

TATTOO: GLE P41E
DOB: 09/08/2018
COLOUR: Red Factor



| October 2023 Australasian Charolais BREEDPLAN Analysis | | | | | | | | | | | | |
|--|--------|------|------|-----|-----|-----|------|------|---------|------|------|------|
| | CE Dir | GL | BW | 200 | 400 | 600 | Milk | SS | Carc Wt | EMA | Rump | IMF |
| EBV | -10.1 | -2.5 | +3.2 | +25 | +53 | +76 | +11 | +1.6 | +41 | +2.2 | +0.1 | +0.2 |
| Acc | 52% | 69% | 73% | 66% | 69% | 67% | 48% | 75% | 59% | 53% | 57% | 52% |

SIRE: GLENLEA JUST RED (GLEJ5E) (AI) (ET) (P) (R/F)

DAM: VALLEY VIEW ESTELLA 416 (VLWH26E) (AI) (ET) (P)

COMMENTS: Big strong large footed bull, deep bodied with plenty of looseness of hide and extra fine hair type. Fast becoming our highest growth bull, top 1% of breed for all growth traits, all positive Carcass traits, PP polled and red.

Photo at 24 months.

GLENLEA KENWORTH (P)

TATTOO: GLE K80E
DOB: 01/10/2014
COLOUR: White



| October 2023 Australasian Charolais BREEDPLAN Analysis | | | | | | | | | | | | |
|--|--------|------|-----|-----|-----|-----|------|------|---------|------|------|------|
| | CE Dir | GL | BW | 200 | 400 | 600 | Milk | SS | Carc Wt | EMA | Rump | IMF |
| EBV | -0.5 | -3.5 | 0.0 | +15 | +29 | +41 | +8 | +1.8 | +22 | +1.4 | +1.9 | +1.1 |
| Acc | 67% | 67% | 85% | 74% | 73% | 73% | 64% | 68% | 62% | 52% | 56% | 51% |

SIRE: RANGAN PARK RIO BRAVO D15 (RAN D15E) (P) (AI) (ET)

DAM: THW TATT MAC D10E (THW D10E) (P) (AI)

COMMENTS: Produced great progeny that have topped sales and won championship at major shows. Early to mid maturity, good carcass with extra fat cover, moderate BW.

Photo at 4 years old.

~ Reference Sires ~

ELRIDGE LORD (AI) (P) (R/F)

TATTOO: RUU L43E
DOB: 17/08/2015
COLOUR: Red Factor



October 2023 Australasian Charolais BREEDPLAN Analysis

| | CE Dir | GL | BW | 200 | 400 | 600 | Milk | SS | Carc Wt | EMA | Rump | IMF |
|-----|--------|------|------|-----|-----|-----|------|------|---------|------|------|------|
| EBV | +2.5 | +0.6 | +1.1 | +22 | +57 | +76 | +11 | +1.5 | +38 | +1.6 | +2.5 | +0.9 |
| Acc | 56% | 88% | 72% | 79% | 82% | 84% | 61% | 88% | 74% | 69% | 71% | 68% |



SIRE: PARINGA RIO BRAVO D213E (TOL D213E) (P)

DAM: ELRIDGE HARMONY (RUU H14E)

COMMENTS: Trait leading sire for growth, fat cover with moderate BW and excellent EMA. Progeny are docile and can finish at any age so have great market versatility. Really breaks the rules in opposing traits of growth and finish. His daughters are coming through with perfect udders, extra growth and plenty of milk. Top 1% all growth traits, Top 10% Fat Cover.

Photo at 23 months.

WATERFORD NEON LIGHTS N35E (P) (R/F)

TATTOO: WET N35E
DOB: 03/10/2017
COLOUR: Red Factor



October 2023 Australasian Charolais BREEDPLAN Analysis

| | CE Dir | GL | BW | 200 | 400 | 600 | Milk | SS | Carc Wt | EMA | Rump | IMF |
|-----|--------|------|------|-----|-----|-----|------|------|---------|------|------|------|
| EBV | -2.4 | -0.1 | +1.5 | +13 | +26 | +37 | +7 | +1.3 | +20 | +0.2 | +0.5 | -0.2 |
| Acc | 48% | 61% | 65% | 60% | 65% | 62% | 47% | 52% | 55% | 42% | 48% | 42% |



SIRE: PALGROVE HERMES (PK H549E) (P)

DAM: WATERFORD ELECTRA 2 G174E (WET G174E) (P/S) (R/F)

COMMENTS: A champion in the show ring and in the paddock. Heavily used in the Waterford herd. Ideal phenotype, eye appeal, carcass and balance.

MOONGOOL MONOPOLY (P)

TATTOO: DP2 M513E
DOB: 19/11/2016
COLOUR: White



October 2023 Australasian Charolais BREEDPLAN Analysis

| | CE Dir | GL | BW | 200 | 400 | 600 | Milk | SS | Carc Wt | EMA | Rump | IMF |
|-----|--------|------|------|-----|-----|-----|------|------|---------|------|------|------|
| EBV | +4.0 | -0.6 | +1.1 | +8 | +22 | +38 | +8 | +0.8 | +20 | +1.6 | -1.0 | +0.2 |
| Acc | 56% | 54% | 82% | 64% | 66% | 73% | 47% | 73% | 58% | 36% | 40% | 36% |



SIRE: TEMANA GOLDEN LOGIE G66E (TJ G66E) (P) (R/F)

DAM: MOONGOOL BUNYA VALE 4 (DP2 C155E) (P)

COMMENTS: A highly successful sire in the Waterford herd based in Victoria. High selling progeny, royal show champions, good doing, thick bodied progeny with excellent carcass.

Photo right: Waterford Red Rascal (PP) R/F at 2.5 years, a first year sire at Glenlea and is a son of Monopoly.



~ Show Heifers ~

Our first 8 lots really do represent the best of our 2022 drop females.

They are made for MAGIC. The bloodlines, the phenotype, the EBV's ... why are you offering them for sale??? I hear the question over and over ... because when we have a female sale we open our herd to our clients, old and new, to select from females with 50 years of selective breeding behind them, to purchase females to build a herd around or add an elite new cow family to an existing herd. Produce bulls that sell at the top end of sales and therefore are very profitable and to get maximum pride and enjoyment out of breeding quality cattle.

HALF-INTEREST FEMALES: Lots 1 and 4 half-interest females are subject to a specific sales agreement that details the partnership between buyer and Glenlea Beef. For selected half interest Lots- explicitly noted in their footnotes-buyers have the option to double the auction bid price to acquire full ownership of the female. All parties interested in purchasing half interest females are encouraged to contact us before the sale. We will provide you with a copy of the partnership agreement for your review before any bidding or purchasing takes place. Open communication is paramount to us, and we strive for a successful and mutually beneficial partnership.

Please note our special offer of **prize money from Glenlea for exhibiting these females at shows. T's & C's apply.** Royal Show Championship \$5000, Regional or Feature Show Championship \$2000, \$500 Local Show Championship.



**Glenlea Superbowl
(GLE S41E) (P) (R/F)**

Maternal brother to Lot 1, one of our high selling Red Factor bulls at our Roma sale this year for \$15,000.

See Reference Sire Glenlea Pheonix (PP), also a maternal Brother to Lot 1 sold for \$25,000 at our Clermont Bull sale in 2020.



**Glenlea Quintus
(GLE Q64E) (PP)**

Photo at 10 months.

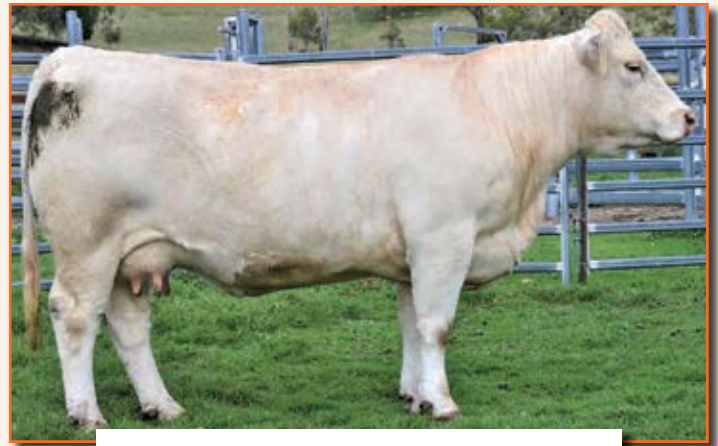
A.I. stud sire at Glenlea.

Maternal brother to Lot 2.



**Glenlea Mandy
(GLE Q335E) (P)**

Paternal sister to Lot 5 and 6.
Junior Champion Female, Beef 2021.



**Valley View Rebbly Cigar 14th
(VLW H14E) (AI) (ET) (P)**

Photo at 5 years old.
Grand dam of Lot 3.



**Glenlea Charol 105th
(GLE P1E) (P)**

Maternal sister to Lot 4.



**Glenlea Charol 91st
(GLE L21E) (P)**

Dam of Lot 4 at 5 years PTIC.



**Glenlea Bop Bop 4th (P)
GLE P27E**

First calf at weaning from
maternal sister Lot 8.



**Glenlea Dappo 1st (P)
GLE S510E**

Maternal sister to Lot 7.

LOT
1

GLENLEA
ESTELLA 41ST (AI) (ET) (P)

TATTOO: GLE 22T117E
DOB: 27/08/2022

SPARROWS FARGO 811U M784935 (PED D4935E) (P)
SIRE: **RBM FARGO Y111 EM809088 (OAU G9088E) (P)**
HC RHINESTONE 5100 F1056859 (PED A6859E) (P)

IMPAIR 1893102983 (OAF N189F)
DAM: **VALLEY VIEW ESTELLA 416 (VLW H26E) (P)**
PALGROVE ESTELLA 214 (PK A416E) (P)

| October 2023 Australasian Charolais BREEDPLAN Analysis | | | | | | | | | | | | |
|--|--------|------|------|-----|-----|-----|------|------|---------|------|------|------|
| | CE Dir | GL | BW | 200 | 400 | 600 | Milk | SS | Carc Wt | EMA | Rump | IMF |
| EBV | +2.7 | -4.3 | +0.2 | +20 | +43 | +54 | +13 | +1.5 | +35 | +1.7 | +0.6 | +0.3 |
| Acc | 43% | 56% | 59% | 53% | 52% | 52% | 39% | 46% | 44% | 35% | 39% | 34% |



COMMENTS: Estella 41st is one of our most exciting heifers born in 2022 in the Glenlea breeding program. She is phenotypically stunning, the Glenlea Beef team cannot fault her. Already a broad ribbon winner at the largest show on the north coast NSW.

Genetically she is a combination of two outstanding individuals that are matched perfectly in type to produce the caliber of female that she is. Her sire has over 2000 registered progeny in the USA, a benchmark sire there and 70 currently in Australia. To our knowledge this is the first heifer by Fargo to be offered in Australia. We first inspected progeny of "Fargo" in Canada in 2019 and then purchased semen.

Her Dam is also the Dam of Glenlea Pheonix and Glenlea Superbowl, high selling bulls in 2020 and 2023, with Pheonix used heavily in our breeding program. Her EBV's are at the top of the breed in many traits with growth and carcass weight in the top 5% of breed with 15 out of 16 recorded traits above breed average.

Estella 41st is a donor class female that has unlimited earning potential (her dam has over \$100,000 in progeny and embryo sales to date). Her 2022 bull calf is in our show team for 2024, and she is currently raising another outstanding daughter. DNA testing results will be available in the sale supplementary sheet prior to sale.

Offering ½ share in partnership with Glenlea or double the Auction price and buy her outright. We have a partnership agreement and the successful bidder will be required to sign this if she remains jointly owned. We strongly advise prospective purchasers to contact us to receive a copy prior to the sale as we view open communication essential in this partnership opportunity.

Offered unjoined.

LOT
2

GLENLEA
NOLANA 152ND (AI) (P)

TATTOO: GLE 22T224E

DOB: 28/09/2022

SILVERSTREAM MAVERICK M183 (PED M183E) (P)
SIRE: **SILVERSTREAM PADRA P7 (OAN Q7E) (P)**
SILVERSTREAM IZZY I125 (PED J125E) (P)

GLENLEA HI GUY (GLE H52E) (P)
DAM: **ORARA WATERFALL GLENLEA NOLANA 10TH (WFAL42E)(P)**
VALLEY VIEW NOLANA 52 (VLW H52E) (P)

| Mid Parent EBVs - October 2023 | | | | | | | | | | | | |
|--------------------------------|--------|------|------|-----|-----|-----|------|------|---------|------|------|------|
| Charolais | CE Dir | GL | BW | 200 | 400 | 600 | Milk | SS | Carc Wt | EMA | Rump | IMF |
| EBV | +2.2 | -5.1 | +1.1 | +20 | +45 | +51 | +12 | +1.5 | +33 | +1.8 | -0.7 | +0.2 |



COMMENTS: Nolana 152nd is an outstanding heifer by any measure. From a cow family with over 40 years of production in the Glenlea herd. Phenotype, Genetics, EBV's. Selected for our show team along with lots 1 to 8 for 2023/24. We decided to offer these heifers for sale, not because we want to sell them, but because we wanted to offer our best and share them with our clients old and new.

Her sire, Padra has taken the charolais world by storm - carcass, growth, calving ease and maternal traits that set him apart from many of the Silverstream genetics.

That Silverstream phenotype combined with her Dam L42 with her amazing softness and high IMF%, along with being one of our highest weaning weight females in the herd, averaging 57kg above her mob average and always the highest weaner in her management group for the last 5 years. Real world results backing EBV's.

This genetic strength gives Nolana 152nd her massive genetic value and unlimited lifetime earning potential. Top 5% for growth and carcass traits, above breed average for 14 out of 16 recorded traits.

We have retained two red factor daughters, and L42 has joined our donor herd.

DNA testing results will be available in the sale supplementary sheet prior to sale.

Offered unjoined and for outright sale.

LOT
3

GLENLEA
REBBY 45TH (AI) (P)

TATTOO: GLE 22T221E

DOB: 27/09/2022

SILVERSTREAM JENSEN J19 (PED K19E) (P)
SIRE: SILVERSTREAM NATIONAL N40 (OAN N40E) (P)
SILVERSTREAM OPIE G8 (PED G8E) (P)

IMPAIR 1893102983 (OAF N189F)
DAM: GLENLEA REBBY 20TH (GLE N5E) (P)
VALLEY VIEW REBBY CIGAR 14TH (VLW H14E) (P)

October 2023 Australasian Charolais BREEDPLAN Analysis

| | CE Dir | GL | BW | 200 | 400 | 600 | Milk | SS | Carc Wt | EMA | Rump | IMF |
|-----|--------|------|------|-----|-----|-----|------|------|---------|------|------|------|
| EBV | -6.0 | -3.3 | +1.3 | +16 | +33 | +46 | +8 | +1.0 | +26 | +1.4 | -1.1 | +0.0 |
| Acc | 48% | 73% | 62% | 57% | 56% | 57% | 50% | 53% | 49% | 41% | 46% | 41% |



COMMENTS: Phenotype, Genetics, EBV's... outstanding carcass, maternal and growth in an earlier to mid maturity phenotype.

Rebby 45th's last four maternal dams have all been donors with many registered progeny. Her dam currently has 9 progeny, G.Dam 16 Progeny, G.G.Dam 34 progeny and her G.G.G. Dam 47 registered progeny. A nationally recognized cow family, just like lot 1 and 2.

We have retained a red factor daughter who is outstanding. Rebby's Dam will be flushed again in 2024.

Sired by Silverstream National (PP) a proven performance bull with nearly 200 outstanding progeny in both NZ and Australia. Noted for his carcass, fine hair type, and maternal excellence with outstanding udders and excellent milking ability.

Her dam is sired by arguably the most influential French sire in Australian Charolais with nearly 400 registered progeny in Australia, 1000's overseas and over 1000 in Australia by his best known son Pinay! The maternal grandsire Cigar is a legend of the breed both here with nearly 200 progeny and in the USA with over 5300 registered progeny!

The bottom line, this heifer is so predictably outstanding that her lifetime earnings are only limited only by her owner's desire.

DNA testing results will be available in the sale supplementary sheet prior to sale.

Offered unjoined for outright sale

LOT
4

GLENLEA
CHAROL 142ND (AI) (P)

TATTOO: GLE 22T238E

DOB: 27/09/2022

SILVERSTREAM JENSEN J19 (PED K19E) (P)
SIRE: SILVERSTREAM NATIONAL N40 (OAN N40E) (P)
SILVERSTREAM OPIE G8 (PED G8E) (P)

RANGAN PARK RIO BRAVO D15 (RAN D15E) (P)
DAM: GLENLEA CHAROL 91ST (GLE L21E) (P)
GLENLEA CHAROL 33RD B24E (GLE B24E)

| October 2023 Australasian Charolais BREEDPLAN Analysis | | | | | | | | | | | | |
|--|--------|------|------|-----|-----|-----|------|------|---------|------|------|------|
| Charolais | CE Dir | GL | BW | 200 | 400 | 600 | Milk | SS | Carc Wt | EMA | Rump | IMF |
| EBV | -7.0 | -3.3 | +1.5 | +20 | +39 | +52 | +7 | +1.6 | +31 | +2.2 | +0.1 | +0.4 |
| Acc | 47% | 72% | 62% | 55% | 55% | 56% | 49% | 53% | 48% | 40% | 44% | 39% |



COMMENTS: A picture says 1000 words it's said. Well have a look at Charol 142nd. These heifers are the best we have and I would challenge anyone to find better phenotypes, genetics and EBV data on charolais females available for sale anywhere in Australia!

The Charol's have been prominent in the Glenlea herd for over 40 years ... so consistently outstanding with many show champions, high selling females and bulls. Charol 142nd Dam is one of our most prized females, with outstanding type, EBV's and performance. The individual cows in this female's lineage are equal to the best we have produced in each generation. Again, sired by Silverstream National (PP) just like lot 3, what a pair of heifers to put together to start a stud herd or add to an existing one.

Top 10% for all growth traits and carcass weight with a strong French influence tracing back until combined with her sire R.P. Rio Bravo D15E (PP) our senior herd sire for several years in the 2010's, now with nearly 300 progeny registered in Australia. A trait leader for all growth and carcass traits with 14 out of 16 recorded traits well above breed average.

DNA testing results will be available in the sale supplementary sheet prior to sale.

Offering ½ share in partnership with Glenlea or double the Auction price and buy her outright. We have a partnership agreement and the successful bidder will be required to sign this if she remains jointly owned. We strongly advise prospective purchasers to contact us to receive a copy prior to the sale as we view open communication essential in this partnership opportunity.

Offered unjoined

LOT
5

GLENLEA
NOLANA 151ST (AI) (P) (TW)

TATTOO: GLE 22T216E
DOB: 01/07/2022

RANGAN PARK REDEMPTION E42 (RAN E42E) (P)
SIRE: **GLENLEA HONOURABLE (VLW H25E) (P)**
FERNVALE CHIFFON (FEN C22E)

LT BLUEGRASS 4017P M686569 (OAU Z4017E) (P)
DAM: **VALLEY VIEW NOLANA 52 (VLW H52E) (P)**
VALLEY VIEW C009 NOLANA (VLW C9E)

| October 2023 Australasian Charolais BREEDPLAN Analysis | | | | | | | | | | | | |
|--|--------|------|------|-----|-----|-----|------|------|---------|------|------|------|
| Charolais | CE Dir | GL | BW | 200 | 400 | 600 | Milk | SS | Carc Wt | EMA | Rump | IMF |
| EBV | -7.3 | +0.0 | +2.2 | +18 | +31 | +48 | +7 | +1.1 | +26 | +2.4 | +0.3 | +0.3 |
| Acc | 48% | 57% | 59% | 52% | 53% | 54% | 47% | 52% | 47% | 41% | 44% | 41% |



COMMENTS: Study this heifer for type, genetics and EBV's - it's hard to have a favorite with these heifer's but **Nolana 151st** could be many people's pick! **NOTE:** she has a little mud around her muzzle in photo.

The Honorable progeny have been sale toppers whenever sold ... performance, easy doing and that extra punch in body shape that attracts bidders every time.

Sire is one of our most proven senior herd sire's. A real impact and maximum performance sire that can produce a good calf from any cow, and outstanding progeny from good cows!

Combined with H52, the Dam of Nolana 151st, the mating has produced an outstanding individual. H52 has an outstanding production record, her first calf was the Dam of lot 2 and is now in our donor herd. Her second heifer also outstanding. A number of sons being high sellers at our sales over the last few years, one a stud sire. This heifer and her twin sister Lot 6 are the first daughters offered for auction.

Top 15% for all growth traits and EMA with all other carcass traits positive.

DNA testing results will be available in the sale supplementary sheet prior to sale.

Offered unjoined for outright sale

LOT
6

GLENLEA
NOLANA 150TH (AI) (P/S) (TW)

TATTOO: GLE 22T215E

DOB: 01/07/2022

RANGAN PARK REDEMPTION E42 (RAN E42E) (P)
SIRE: GLENLEA HONOURABLE (VLW H25E) (P)
FERNVALE CHIFFON (FEN C22E)

LT BLUEGRASS 4017P M686569 (OAU Z4017E) (P)
DAM: VALLEY VIEW NOLANA 52 (VLW H52E) (P)
VALLEY VIEW C009 NOLANA (VLW C9E)

| October 2023 Australasian Charolais BREEDPLAN Analysis | | | | | | | | | | | | |
|--|--------|------|------|-----|-----|-----|------|------|---------|------|------|------|
| Charolais | CE Dir | GL | BW | 200 | 400 | 600 | Milk | SS | Carc Wt | EMA | Rump | IMF |
| EBV | -7.3 | +0.0 | +2.2 | +18 | +31 | +48 | +7 | +1.1 | +26 | +2.4 | +0.3 | +0.3 |
| Acc | 48% | 57% | 59% | 52% | 53% | 54% | 47% | 52% | 47% | 41% | 44% | 41% |



COMMENTS: A powerhouse heifer that our future plans may have included being show as a cow with calf at foot.

A twin sister to Lot 5. She has a little more bone, overall mass and weight than her twin but she was the dominant twin.

This heifer is Horned, with the many PP Polled sires available should never have a horn calf when joined to Homozygous bulls, and you will have polled progeny with added overall yield and body mass, always attracting attention of buyers at sales.

Same sire, dam and EBV comments apply as lot 5. Of note is that the Grand dam of Nolana 150th was sold as frozen embryo in 2006. The influence of this cow family will exist many years into the future in numerous stud herds throughout the country.

This heifer is one to own and build a cow family around.

DNA testing results will be available in the sale supplementary sheet prior to sale.

Offered unjoined for outright sale

LOT
7

GLENLEA
DAPPO 5TH (P)

TATTOO: GLE 22T219E

DOB: 01/09/2022

DOUGLASDALE LUCA (DOU L34E)
SIRE: DOUGLASDALE PAXTON (DOU P21E) (P)
DOUGLASDALE ESTELLA (DOU D33E)

VERNOLA JUST RIGHT J6E (VIW J6E) (P/S)
DAM: ALLEDNAW DAPPO L15 (AKT L15E)
ALLEDNAW DAPPO H2E (AKT H2E) (P)

| October 2023 Australasian Charolais BREEDPLAN Analysis | | | | | | | | | | | | |
|--|--------|------|------|-----|-----|-----|------|------|---------|-----|------|-----|
| | CE Dir | GL | BW | 200 | 400 | 600 | Milk | SS | Carc Wt | EMA | Rump | IMF |
| EBV | +2.8 | -3.3 | +0.9 | +11 | +23 | +31 | +4 | +1.1 | +19 | | | |
| Acc | 29% | 31% | 41% | 36% | 35% | 35% | 31% | 28% | 29% | | | |



COMMENTS: Daplo 5th is such an impressive heifer. Deep, square, yet refined front end and such a fine hair type. She is up with the best and deserves to be there.

While carrying no Glenlea genetics, she is from one of Palgrove's most notable cow families and her dam is by a very powerful breeding bull in Just Right, who's sons and daughters have left a very positive influence throughout a number of stud herds in QLD, NSW and VIC, including Allednaw, Minnie Vale, Elridge, Kandanga Valley and Glenlea.

Her carcass EBV's will be above average, these heifers have yet to be ultra sound scanned.

Her sire is a blend of Palgrove and Airlie bloodlines, a bull with early maturity, carcass, very fine hair type and perfect structure, progeny we have are excellent. Look at Lot 40 in the sale - another outstanding daughter of Paxton.

The power in this heifer comes from her dam, Daplo L15 who we rate very highly in the herd, and is currently raising one of our most outstanding Jehu heifers. One of Palgrove's best cow families combined with Pinay F21 a bull with nearly 300 registered progeny. Daplo 5th's grand dam is a donor in the Allednaw herd and her massive carcass, volume, excellent udder, and strong overall phenotype make her a valuable cow that will be in the Glenlea herd for years to come.

DNA testing results will be available in the sale supplementary sheet prior to sale.

Offered unjoined for outright sale

LOT
8

GLENLEA
BOP BOP 15TH (AI) (ET) (P)

TATTOO: GLE 22T123E

DOB: 01/09/2022

GERRARD PREACHER 31U (OAC D9989E) (P)
SIRE: GERRARD PASTOR 35Z (OAC H7921E) (P)
GERRARD ROXANNE 18P (PED -4620E)

GLENLEA HI GUY (GLE H52E) (P)
DAM: ORARA WATERFALL GLENLEA BOP BOP 1ST (WFA L44E) (P)
PIPECLAY G2E (ROL G2E)



October 2023 Australasian Charolais BREEDPLAN Analysis

| | CE Dir | GL | BW | 200 | 400 | 600 | Milk | SS | Carc Wt | EMA | Rump | IMF |
|-----|--------|------|------|-----|-----|-----|------|------|---------|------|------|------|
| EBV | -16.9 | -0.1 | +1.8 | +16 | +30 | +46 | +11 | +1.6 | +25 | +1.8 | +1.3 | +0.4 |
| Acc | 40% | 49% | 54% | 48% | 47% | 48% | 41% | 44% | 39% | 33% | 36% | 33% |



COMMENTS: A powerhouse heifer - strength of type, exclusive genetics, breed leading EBV's. The photo shows you strength and softness.

These heifers are 14 months old on average and weigh 500 +kg. This heifer while named BOP BOP 1st, traces back to the Estella cow family at Palgrove. The genetics in these heifers is why they have such great EBV data. Leading performance bloodlines breed on and on again through the generations making buying these heifers a smart investment.

Sire, Gerrard Pastor is a leading powerful sire in Canada and also the sire of Elders Blackjack (PP). Pastor semen was Imported by Clare Charolais, this semen is not available on the general market.

We can't remember when a Pastor daughter has been offered at Auction, so here is your chance to secure a powerful breeding heifer with exclusive genetics from a nationally recognized cow family.

DNA testing results will be available in the sale supplementary sheet prior to sale.

Offered unjoined for outright sale

LOT
9

CALMVIEW
GLORIA T119E (P)

TATTOO: CVW 22T119E

DOB: 18/09/2022

WAKEFIELD LORAX (BIS L982E) (P)
SIRE: WAKEFIELD QUINCY (BIS Q213E) (P)
WAKEFIELD AUTUMN 19 (BIS M237E) (P)

FERNVALE GOLD RUSH (FEN G44E)
DAM: CALMVIEW GLORIA M90E (CVW M90E) (P)
FERNVALE GLORIA (FEN G46E) (P/S)

| October 2023 Australasian Charolais BREEDPLAN Analysis | | | | | | | | | | | | |
|--|--------|------|------|-----|-----|-----|------|------|---------|-----|------|-----|
| Charolais | CE Dir | GL | BW | 200 | 400 | 600 | Milk | SS | Carc Wt | EMA | Rump | IMF |
| EBV | -1.2 | -2.7 | +0.1 | +14 | +30 | +43 | +10 | +1.4 | +24 | | | |
| Acc | 35% | 39% | 67% | 45% | 44% | 47% | 35% | 28% | 33% | | | |



COMMENTS: Offered by Guest vendors Tony and Suzie Farrell this heifer has been prepared at Pinedock along with the Glenlea heifers lot 1 to 8.

Exceptional fat cover and eye appealing heifer.

Wakefield sire is a first-year stud sire, and dam is a rare 100% Fernvale bloodline female.

Offered unjoined for outright sale

~ Cows & Calves ~

The next 8 lots are a unique group of young cows.

All low to moderate BW females, early maturity, outstanding udders and temperaments. Calves at foot are sired by several sires and the bull calves are all high quality sale bull prospects for 2025. The heifer calves are outstanding stud heifers to join your herd.

These females have had the opportunity to join to an exciting young sire offering outstanding phenotype, data and pedigree, Taylor / Glenlea Fargo T14 (PP).

Sired by an incredibly proven USA bull "Fargo" with over 2000 registered progeny in the USA and Canada, currently 69 registered in Australia. Moderate BW, breed leading 200 and 400 day growth, thick soft easy doing types. Check out lot 1 in this sale, a paternal sister to T14. T14 's Dam is a fully imported embryo from the Silverstream herd in NZ. Extra growth, carcass and yield, a very neat udder and excellent bone.

T14 is a perfect combination of his parents and all with a bomb proof temperament and tested PP Polled. We think this young sire has a big future as a stud sire and progeny from these cows will be his first in Australia.

The six Calmview females are all first calvers with excellent calves at foot with a lifetime of production in front of them. Herd building females.



SIRE: RBM FARGO Y111 (OAU G9088E) (P)
DAM: CALMVIEW DASHER R9E (CVW R9E) (P) (AI) (ET)

JOINING SIRE Taylor Glenlea Fargo T14 (TC3 22T14E) (PP) (AI)

*Photo at 13 months
and approaching 700kg.*

| October 2023 Australasian Charolais BREEDPLAN Analysis | | | | | | |
|--|--------|------|---------|------|------|------|
| | CE Dir | GL | BW | 200 | 400 | 600 |
| EBV | -5.7 | -3.5 | +1.7 | +25 | +51 | +62 |
| Acc | 42% | 67% | 65% | 61% | 61% | 58% |
| | Milk | SS | Carc Wt | EMA | Rump | IMF |
| EBV | +3 | +2.3 | +38 | +1.7 | +2.1 | +0.1 |
| Acc | 40% | 46% | 49% | 42% | 44% | 41% |

LOT
10

CLARINDA
QUE ASPRO 2ND (AI) (P)

TATTOO: KEN S47E

DOB: 24/08/2021

JWX DOWNTOWN 7C (OAC L6112E) (P)
SIRE: **CLARINDA DOWNTOWN Q32 (KEN Q32E) (P)**
LANGI GHIRAN ELOISE 6 (JRR J14E) (P)

CLARINDA EASY L38 (KEN L38E) (P)
DAM: **CLARINDA L38 ASPRO (KEN N50E) (P)**
CLARINDA DOC ASPRO (KEN L55E) (P)

October 2023 Australasian Charolais BREEDPLAN Analysis

| | CE Dir | GL | BW | 200 | 400 | 600 | Milk | SS | Carc Wt | EMA | Rump | IMF |
|-----|--------|------|------|-----|-----|-----|------|------|---------|------|------|------|
| EBV | +5.8 | -8.0 | -1.5 | +15 | +30 | +46 | +12 | +1.1 | +25 | +1.6 | +1.1 | +0.8 |
| Acc | 40% | 73% | 71% | 62% | 60% | 60% | 40% | 47% | 48% | 35% | 41% | 35% |

Joined to
TC3 22T14E
from 1/11/23.



COMMENTS: A classy first calver. Calved at 25 months. Volume, refined front end, pelvic capacity, very clean underline, Double Polled and perfect udder. Curve bending EBV's with below average BW and well above average growth and carcass traits EMA, Fats and IMF% all above breed average. Sire is by Australian bred A.I. sire, Downtown Q32 (PP) that we have inspected in person, so impressed by his daughters and sons, we purchased his dam, therefore this heifer's grand dam to join our donor herd for \$16,000 earlier in the year.



Polled Bull Calf at Foot
GLE U208E Born 20/9/23

Calf Sire: Tambo River Quicksilver (PP) - a high-performance son of Elders Blackjack.

LOT
11

CLARINDA
TRIUMPH UNIVERSE (AI) (P)

TATTOO: KEN S31E

DOB: 06/08/2021

SCR TUFFY 0119 (PED F7626E) (P)
SIRE: **SCR TRIUMPH 2135 (OAC H5788E) (P)**
SCR MS BABY DOLL 7140 (PED C6627E) (P)

VPI FREE LUNCH 708T (OAU C6773E) (P)
DAM: **CLARINDA FREELUNCH UNIVERSE (KEN N31E) (P)**
CLARINDA DOC UNIVERSE (KEN L56E)

October 2023 Australasian Charolais BREEDPLAN Analysis

| | CE Dir | GL | BW | 200 | 400 | 600 | Milk | SS | Carc Wt | EMA | Rump | IMF |
|-----|--------|------|------|-----|-----|-----|------|------|---------|------|------|------|
| EBV | +7.9 | -6.8 | -2.5 | +16 | +28 | +32 | +5 | +2.0 | +20 | -0.3 | +1.6 | +0.6 |
| Acc | 41% | 74% | 71% | 61% | 58% | 57% | 37% | 42% | 44% | 29% | 37% | 29% |

Joined to
TC3 22T14E
from 1/11/23.



COMMENTS: Twin heifer's at foot, calved unassisted at 2 years old as all these females did. Good bodied early maturing type, fine hair type, Double Polled, perfect udder.

Curve bending EBV's extra Low BW with above breed average growth.

A Canadian sire who is really making a name through his progeny, easy calving, good doing cattle with carcass.



Polled twin heifer Calves:
GLE U200E and GLE U201E (pictured)
Born 3/8/23

Calf Sire: Tambo River Quicksilver (PP).

LOT
12

CLARINDA
M14 SHEILA (P)

TATTOO: KEN P32E

DOB: 25/08/2018

LT VENTURE 3198 (OAU J5612E) (P)
SIRE: CLARINDA VENTURE M14 (KEN M14E) (P)
VERNOLA BLOSSUM E1 (VIW E1E) (P)

MERIT ROUNDUP 9508W (OAC E6558E) (P)
DAM: CLARINDA ROUND UP SHEILA (KEN M33E) (P)
CLARINDA BRAVO SHEILA (KEN F6E) (P)

October 2023 Australasian Charolais BREEDPLAN Analysis



| | CE Dir | GL | BW | 200 | 400 | 600 | Milk | SS | Carc Wt | EMA | Rump | IMF |
|-----|--------|------|------|-----|-----|-----|------|------|---------|------|------|------|
| EBV | +4.0 | -3.5 | -0.4 | +20 | +40 | +47 | +10 | +2.7 | +27 | +0.7 | +1.0 | +0.4 |
| Acc | 48% | 60% | 73% | 64% | 67% | 66% | 58% | 44% | 56% | 35% | 43% | 35% |

Joined to
TC3 22T14E
from 1/11/23.



COMMENTS: *Lovely young cow, producing very well.* Donor dams on both sides of her pedigree. Double Polled, long bodied, great udder, loose hided with good dewlap combining some of the best low BW, high growth genetics in Australia.

Curve bending EBV's with Low BW and good growth, positive EMA and well above average Fats and IMF%. Understand all these cows and calves have only dry lick as supplement since calving. The genetics are what your investing in, not the fat on their back!

Calf Sire: Charnelle Panama (PP).

We think this bull calf is sire prospect and Glenlea would like first option to purchase his when he is grown out and sale ready.



Polled Bull Calf at Foot
GLE U203E Born 14/8/23

LOT
13

CLARINDA
LONATO DIANNA (P)

TATTOO: KEN P53E

DOB: 20/09/2018

LT LEDGER 0332 (OAU F3168E) (P)
SIRE: AIRLIE LONATO (A1S L137E) (P)
AIRLIE KELLY G209E (A1S G209E) (P)

CLARINDA MR EASY (KEN E7E) (P)
DAM: CLARINDA EASY DIANNE (KEN K56E) (P)
AIRLIE DIANNA Z33E (A1S Z33E)

October 2023 Australasian Charolais BREEDPLAN Analysis



| | CE Dir | GL | BW | 200 | 400 | 600 | Milk | SS | Carc Wt | EMA | Rump | IMF |
|-----|--------|------|------|-----|-----|-----|------|------|---------|------|------|------|
| EBV | -2.8 | -0.1 | +0.8 | +15 | +23 | +39 | +11 | +1.1 | +18 | +1.1 | +1.1 | +0.4 |
| Acc | 51% | 60% | 76% | 67% | 69% | 68% | 59% | 48% | 57% | 38% | 46% | 37% |

Joined to
TC3 22T14E
from 1/11/23.



COMMENTS: *Excellent young cow.*

Deep bodied and easy doing, extra pelvic capacity, Double Polled. She is breeding extra carcass with great eye appeal and her heifer calf at foot is a show prospect!

She belongs to Airlie Charolais best French cow family the "Dianna's".

Above breed average for all growth traits with still moderate BW and all positive carcass traits.

Calf Sire: Charnelle Panama (PP).



Polled Heifer Calf at Foot
GLE U202E Born 12/8/23

LOT
14

CLARINDA
LONATO SHEILA 2ND (AI) (P) (R/F)

TATTOO: KEN Q43E
DOB: 22/08/2019

LT LEDGER 0332 M791626 (OAU F3168E) (P)
SIRE: AIRLIE LONATO (A1S L137E) (P)
AIRLIE KELLY G209E (A1S G209E) (P)

CLARINDA PROFILE (KEN E5E) (P)
DAM: CLARINDA PROFILE SHEILA (KEN H45E) (P)
CLARINDA BRAVO SHEILA (KEN F6E) (P)

October 2023 Australasian Charolais BREEDPLAN Analysis

| | CE Dir | GL | BW | 200 | 400 | 600 | Milk | SS | Carc Wt | EMA | Rump | IMF |
|-----|--------|------|------|-----|-----|-----|------|------|---------|------|------|------|
| EBV | -1.6 | -1.8 | -0.7 | +12 | +21 | +28 | +11 | +0.8 | +17 | +2.1 | +2.4 | +0.8 |
| Acc | 48% | 74% | 74% | 64% | 66% | 64% | 50% | 48% | 55% | 44% | 57% | 44% |

Joined to
TC3 22T14E
from 1/11/23.



COMMENTS: Lovely long bodied young cow. Double Polled and Red factor, perfect udder, fine coated.

All four of her grand dams are donor cows, with two of them being international donors. This female has a depth in her genetics, hard to match! Its repetitive with these young cows, curve bending Ebv's, Low BW with plenty of growth. Q43 has well above average carcass data across all traits.



Calf Sire: Downtown Q32 (PP)

Polled Heifer Calf at Foot
GLE U207E Born 2/9/23

LOT
15

CLARINDA
FREELUNCH UNIVERSE (AI) (P)

TATTOO: KEN N31E
DOB: 20/08/2017

LT RIO BLANCO 1234 P (OAU W591E) (P)
SIRE: VPI FREE LUNCH 708T (OAU C6773E) (P)
VPI MISS DUCHESS 404 P (PED -5358E) (P)

RANGAN PARK DOC SILVER H54 (RAN H54E) (P)
DAM: CLARINDA DOC UNIVERSE (KEN L56E)
CLARINDA PROFILE UNIVERSE (KEN H49E) (P)

October 2023 Australasian Charolais BREEDPLAN Analysis

| | CE Dir | GL | BW | 200 | 400 | 600 | Milk | SS | Carc Wt | EMA | Rump | IMF |
|-----|--------|------|------|-----|-----|-----|------|------|---------|------|------|------|
| EBV | +13.0 | -6.0 | -3.8 | +18 | +35 | +41 | +13 | +2.7 | +24 | +0.1 | +2.4 | +1.1 |
| Acc | 55% | 77% | 76% | 69% | 71% | 70% | 66% | 56% | 61% | 48% | 56% | 48% |

Joined to
TC3 22T14E
from 1/11/23.



COMMENTS: An exceptional Double Polled performance female with incredible spread of EBV's from fertility and calving ease to birth weight and growth to carcass traits. 5 calves in five years having first calved as a two year old, and calving within 3 days of same date last 3 years, coming forward in calving interval as a first calver by 4 weeks exceptional fertility! Her sire is one of the most proven calving ease performance bulls in the Australia and the USA. Her cow family is very prolific, generationally bred for calving ease and high growth in an early maturing phenotype. Top 1% IMF, Top 2% for Low BW, top 4% for calving ease, Top 5% for Fats, Top 15% for 200- and 400-day weight. 14 out of 16 recorded traits well above breed average. This is the sort of young cow that could be put into an E.T. program to add many daughters to your herd.



Polled Heifer Calf at Foot - Show Prospect
GLE U209E Born 6/8/23
Calf Sire: Turnbolls' Duty Free (PP)

LOT
16

CLARINDA
L38 ADELINE (P)

TATTOO: KEN N58E

DOB: 05/11/2017

CLARINDA MR EASY (KEN E7E) (P)
SIRE: **CLARINDA EASY L38 (KEN L38E) (P)**
ROSEDALE GAIETY B79 (MR B79E) (P)

MERIT ROUNDUP 9508W (OAC E6558E) (P)
DAM: **CLARINDA ROUND UP ADELINE (KEN L2E) (P)**
CLARINDA PRO ADELINE (KEN H10E) (P)

October 2023 Australasian Charolais BREEDPLAN Analysis

| | CE Dir | GL | BW | 200 | 400 | 600 | Milk | SS | Carc Wt | EMA | Rump | IMF |
|-----|--------|------|------|-----|-----|-----|------|------|---------|------|------|------|
| EBV | +5.8 | -5.9 | -2.8 | +13 | +28 | +33 | +10 | +1.7 | +20 | +0.1 | +0.5 | +0.4 |
| Acc | 48% | 64% | 73% | 65% | 65% | 64% | 61% | 48% | 52% | 32% | 35% | 31% |

Joined to
TC3 22T14E
from 1/11/23.



COMMENTS: Another long bodied early maturing excellent uddered, Double Polled young cow in her prime with a **great heifer calf at foot that is a show prospect.**

Again, great spread of EBV's from birth through the growth curve. 5 calves in 5 years, calving as a 2-year-old and reducing her calving interval every year!

Amazing fertility, we just admire these cows so much for their fertility and bred in calving ease!

Calf Sire: Downtown Q32 (PP)

Polled Heifer Calf at Foot
GLE U210E Born 2/8/23

LOT
17

CLARINDA
EASY CAMARRI (P)

TATTOO: KEN N27E

DOB: 16/08/2017

LT EASY PRO 1158 PLD (OAU W6203E) (P)
SIRE: **CLARINDA MR EASY (KEN E7E) (P)**
BJR SILVER MAID 717 ET (OAU C8469E) (P)

RANGAN PARK DOC SILVER H54 (RAN H54E) (P)
DAM: **CLARINDA DOC CAMARRI (KEN L45E) (P)**
CLARINDA BRAVO CAMARRI (KEN H19E) (P)

October 2023 Australasian Charolais BREEDPLAN Analysis

| | CE Dir | GL | BW | 200 | 400 | 600 | Milk | SS | Carc Wt | EMA | Rump | IMF |
|-----|--------|------|------|-----|-----|-----|------|------|---------|------|------|------|
| EBV | +11.3 | -5.4 | -2.2 | +18 | +41 | +53 | +17 | +1.3 | +31 | +0.8 | +1.6 | +1.0 |
| Acc | 54% | 67% | 76% | 67% | 69% | 67% | 65% | 49% | 57% | 38% | 45% | 38% |

Joined to
TC3 22T14E
from 1/11/23.



COMMENTS: The curve bending genetics these females display are very clear in N27, lovely deep bodied, good doing, Double Polled young cow with a great bull calf, note how much younger he is than other calves.

The biggest spread from birth to growth of all these young females with Low BW and 600 day weight in the top 10% of the breed, extremely rare to find that data set in a charolais female.

5 calves in 5 years productivity that you can bank on!

Calf Sire:

We think U206 has sire potential, Glenlea would like first option of buying this bull when grown out ready for sale.

Polled Bull Calf at Foot
GLE U206E Born 25/9/23



LOT
18

CALMVIEW
FESTOON S43E (AI) (P)

TATTOO: CVW S43E
DOB: 07/02/2021

SILVERSTREAM EVOLUTION E168 (OAN E168E) (P)
SIRE: SILVERSTREAM MINISTER M130 (OAN M130E) (P)
SILVERSTREAM LOTUS E96 (OAN E96E)

FERNVALE CHARLIE (FEN C35E) (P)
DAM: CVW CALMVIEW FESTOON (CVW F10E)
PALGROVE FESTOON 168 (PK C30E)

October 2023 Australasian Charolais BREEDPLAN Analysis

| | CE Dir | GL | BW | 200 | 400 | 600 | Milk | SS | Carc Wt | EMA | Rump | IMF |
|-----|--------|------|------|-----|-----|-----|------|------|---------|------|------|------|
| EBV | -3.4 | +0.1 | +2.8 | +8 | +21 | +38 | +4 | +1.0 | +18 | +0.8 | -1.3 | +0.1 |
| Acc | 42% | 68% | 70% | 61% | 57% | 58% | 50% | 47% | 46% | 37% | 39% | 36% |

Offered
Unjoined



Video available on AuctionsPlus
from 1/12/23

Polled Heifer Calf at Foot

CVW U102E

Born: 20/08/23

Sire: Palgrove Nifty PK N458E (PP)



LOT
19

CALMVIEW
FESTOON S65E (P) (R/F)

TATTOO: CVW S65E
DOB: 08/02/2021

PALGROVE HERITAGE H135 (PK H135E) (P)
SIRE: PALGROVE MASTERPLAN (PK M709E) (P)
PALGROVE PANACHE 250 (PK F208E) (P)

PALGROVE JUSTICE (PK J603E) (P)
DAM: PALGROVE FESTOON N809E (PK N809E) (P)
PALGROVE FESTOON 261 (PK F608E)

October 2023 Australasian Charolais BREEDPLAN Analysis

| | CE Dir | GL | BW | 200 | 400 | 600 | Milk | SS | Carc Wt | EMA | Rump | IMF |
|-----|--------|------|------|-----|-----|-----|------|------|---------|------|------|------|
| EBV | +1.1 | -2.9 | +0.3 | +6 | +15 | +17 | +8 | +1.0 | +11 | +1.3 | +1.5 | +0.2 |
| Acc | 43% | 46% | 70% | 62% | 59% | 57% | 47% | 50% | 48% | 40% | 44% | 40% |

Offered
Unjoined



Video available on AuctionsPlus
from 1/12/23

Polled Bull Calf at Foot

CVW U97E

Born: 14/08/23

Sire: Palgrove Nifty PK N458E (PP)



LOT
20

CALMVIEW
RUBY S15E (P)

TATTOO: CVW S15E

DOB: 23/01/2021

ANC KINGSTON K277 (ANC K277F) (P)
SIRE: ANC NASDAQ (ANC N357F) (P)
ANC NATASHA 311 (ANC K311F) (P)

ANC KILOWATT (ANC K96F) (P)
DAM: CALMVIEW RUBY N35E (CVW N35E) (P)
ROSEDALE KELLY D193 (MR D193E) (P)

October 2023 Australasian Charolais BREEDPLAN Analysis



| | CE Dir | GL | BW | 200 | 400 | 600 | Milk | SS | Carc Wt | EMA | Rump | IMF |
|-----|--------|------|------|-----|-----|-----|------|------|---------|-----|------|-----|
| EBV | -1.2 | -0.3 | +1.3 | +12 | +20 | +28 | +4 | +0.1 | +15 | | | |
| Acc | 36% | 37% | 68% | 56% | 51% | 54% | 34% | 27% | 38% | | | |

Offered
Unjoined



Video available on AuctionsPlus
from 1/12/23

Polled Heifer Calf at Foot

CVW U105E

Born: 22/08/23

Sire: Palgrove Nifty PK N458E (PP)

LOT
21

CALMVIEW
CHABLIS S70E (P) (R/F)

TATTOO: CVW S70E

DOB: 23/06/2021

ISIDOR P (OAF J5072F) (P)
SIRE: ANC PLATINUM (ANC P52F) (P)
ANC FERROUS'S MONIQUE (ANC J349F) (P)

FERNVALE GOLD DIGGER (FEN G39E) (P)
DAM: CALMVIEW CHABLIS M12E (CVW M12E)
FERNVALE CHABLIS (FEN C17E) (P)

October 2023 Australasian Charolais BREEDPLAN Analysis



| | CE Dir | GL | BW | 200 | 400 | 600 | Milk | SS | Carc Wt | EMA | Rump | IMF |
|-----|--------|------|------|-----|-----|-----|------|------|---------|-----|------|-----|
| EBV | +8.5 | -3.2 | -0.7 | +8 | +18 | +31 | +11 | +0.8 | +19 | | | |
| Acc | 35% | 46% | 67% | 55% | 48% | 49% | 34% | 26% | 33% | | | |

Offered
Unjoined



Video available on AuctionsPlus
from 1/12/23

Polled Bull Calf at Foot

CVW U100E

Born: 18/08/23

Sire: Palgrove Nifty PK N458E (PP)



LOT
22

GLENLEA
ELSA 120TH (P) (R/F)

TATTOO: GLE S8E
DOB: 19/01/2021

RANGAN PARK REDEMPTION E42 (RAN E42E) (P)
SIRE: **GLENLEA JUST RED (GLE J5E) (P)**
GLENLEA JANET U6E R/F (GLE U6E) (P)

RANGAN PARK RIO BRAVO D15 (RAN D15E) (P)
DAM: **GLENLEA ELSA G24E (GLE G24E) (P)**
GLENLEA ELSA V14E (GLE V14E)

October 2023 Australasian Charolais BREEDPLAN Analysis

| | CE Dir | GL | BW | 200 | 400 | 600 | Milk | SS | Carc Wt | EMA | Rump | IMF |
|-----|--------|------|------|-----|-----|-----|------|------|---------|------|------|------|
| EBV | -6.8 | -2.6 | +2.0 | +17 | +38 | +54 | +6 | +0.5 | +27 | +1.8 | +1.3 | +0.7 |
| Acc | 46% | 53% | 70% | 58% | 56% | 57% | 46% | 50% | 47% | 39% | 43% | 38% |

Offered
Unjoined



Video available on AuctionsPlus
from 1/12/23

Polled Bull Calf at Foot
CVW U92E

LOT
23

CALMVIEW
CALMVIEW HOT STUFF S84E (P)

TATTOO: CVW S84E
DOB: 18/07/2021

ISIDOR P (OAF J5072F) (P)
SIRE: **ANC PLATINUM (ANC P52F) (P)**
ANC FERROUS'S MONIQUE (ANC J349F) (P)

FERNVALE JASPA (FEN J46E) (P) (R/F)
DAM: **CALMVIEW HOT STUFF M89E (CVW M89E) (R/F) (D)**
FERNVALE HOT STUFF (FEN H16E) (AI) (ET) (D)

October 2023 Australasian Charolais BREEDPLAN Analysis

| | CE Dir | GL | BW | 200 | 400 | 600 | Milk | SS | Carc Wt | EMA | Rump | IMF |
|-----|--------|------|------|-----|-----|-----|------|----|---------|-----|------|-----|
| EBV | +0.5 | -1.3 | +1.2 | +10 | +19 | +29 | +6 | - | +19 | - | - | - |
| Acc | 32% | 44% | 65% | 53% | 46% | 47% | 34% | - | 31% | - | - | - |

Offered
Unjoined



Video available on AuctionsPlus
from 1/12/23

Polled Bull Calf at Foot
CVW U110E

Born: 2/09/23
Sire: Palgrove Nifty PK N458E (PP)



~ Joined Heifers ~

We have a unique offering of PTIC heifers in this sale.

These heifers are each a building block in your herd whether you have 1 or 1000 head. Selected heifers from the replacement heifers in the Glenlea herd from some of our best-known bloodlines. This sale each year is where we offer our top PTIC heifer's in numbers and there are many outstanding individuals.

Additionally a complete draft of the Waterford prefix heifer's have been included in the sale as a unique opportunity. Never before has such a group of 2 year old joined heifer's been offered with the Waterford Charolais brand. The only "S" heifer's not offered in this group are animals that did not reach the high standards to remain in the Waterford or Glenlea herd.

These are top shelf herd building females, the **Bricks and Mortar** of your future participation in the next big upward move in the cattle cycle. When these heifer's first progeny are ready to sell we will be in a very different and positive cattle market. **Absolute buying opportunities are rare, but right now is a perfect time to add top shelf stud charolais breeding females to your herd. These heifer's will give you outstanding progeny into the 2030's.**

Joining Sires: Our search for elite sires suitable to join to our heifers is never ending. We favor Australian bred bulls instead of overseas sires as we can inspect the bulls and their dams to really determine if that sire has potential to take our breeding program forward. Many studs join heifer's to very low BW bulls of other breeds. While every herd is managed differently, we at Glenlea aim to generationally breed in calving ease.



SIRE: WR FOREMAN D602 (OAU M3344E) (P)
DAM: PARINGA KILO PACKER P334 (TOL P334E) (P) (AI)

JOINING SIRE Belbourie Park Royalty (BEL R4E) (AI) (P)

*Photo at 2.5 years in paddock condition
coming out of Victorian wet winter.*

| October 2023 Australasian Charolais BREEDPLAN Analysis | | | | | | |
|--|--------|------|---------|------|------|------|
| | CE Dir | GL | BW | 200 | 400 | 600 |
| EBV | +18.8 | -9.0 | -5.8 | +15 | +30 | +31 |
| Acc | 46% | 75% | 73% | 65% | 70% | 65% |
| | Milk | SS | Carc Wt | EMA | Rump | IMF |
| EBV | +12 | +2.6 | +26 | +1.4 | +1.1 | +0.7 |
| Acc | 45% | 75% | 57% | 48% | 50% | 47% |

Royalty impressed us when we inspected him in early 2022 as a rising two year old. Long, good carcass and excellent bone for a Low BW sire, very sound structure, big strong feet and very docile. Glenlea was one of the first stud herds in Australia to use the bull extensively with around 40 heifers A.I.ed to the bull in 2023. This is much more than normal for a new sire in our breeding program but having seen his mother and grand mother and the bull in person gave us the confidence to heavily use him.

Phenotypically he is faultless and his data is simply amazing, with top 1% of breed for direct calving ease and top 1% low BW, with a total of 14 out of 16 recorded traits above breed average!

We are very excited to see his first progeny in the Glenlea herd and these heifer's offered for sale will be some of the first to have his calves.

Disclaimer Glenlea does not own any interest in Royalty.

~ Joined Heifers ~



SIRE: RANGAN ASHWOOD F56 L84 (RAN L84E) (AI) (P)
DAM: ASCOT GOLDEN P12E (JAJ P12E) (AI) (P)

Ashwood S38 is a special bull. His temperament is simply playful, his body type is thick set, early maturing with good bone, an excellent carcass with extra fat cover, and his data that is matched by very few bulls in the breed anywhere in the world. Ashwood S38 weighed over 700kg at 16 months with 132cm² EMA raw scan ... plenty of two year old bulls weighing more only achieve that sort of scan, especially ones with breed leading fat cover. Our number 1 heifer Joining Sire in the Glenlea herd. His data is amazing with top 1% of breed for both direct calving ease and Low BW, top 1% for Rib and Rump fat and milk with top 5% for EMA. Nearly all the Waterford prefix heifers have been joined to him and based on his calves to date we expect that type cross to work very well.

JOINING SIRE Maw Glenlea Ashwood S38 (MAW S38E) (AI) (P)

Photo at 15 months. Sold at 16 months of age at our 2022 Roma Bull sale for \$19,000.

| October 2023 Australasian Charolais BREEDPLAN Analysis | | | | | | |
|--|--------|------|---------|------|------|------|
| | CE Dir | GL | BW | 200 | 400 | 600 |
| EBV | +17.2 | -9.0 | -4.0 | +12 | +24 | +28 |
| Acc | 45% | 72% | 62% | 60% | 65% | 61% |
| | Milk | SS | Carc Wt | EMA | Rump | IMF |
| EBV | +20 | +2.0 | +17 | +3.0 | +4.7 | +0.2 |
| Acc | 50% | 73% | 56% | 51% | 55% | 51% |



SIRE: CHALLAMBI LEOPOLD (CHA L2E) (AI) (P)
DAM: ALLEDNAW NUNCIATA N115 (AKT N115E) (P)

Allednaw Leopold R45 is a Sire we selected to join many of our heifers to last year. Critically important is his top 1% calving ease and low BW in the breed. His maternal strength coming from the Nunciata cow family, one of Glenlea's oldest and best, his Allednaw dam is part of that cow family. We have been so very impressed with his calving ease and progeny and we have used him again heavily in 2023, joining multiple mobs of heifers throughout the year. His calves are showing good muscle yield, growth and are all polled, many of his sons will make our bull sales in the future. We are so confident in his progeny, we used him to follow up after our A.I. Program to Royalty. Our selection criteria for our specialist heifer bulls including being PP polled, extra quiet temperament, sound feet, strength of type and natural doability, Leopold ticks all these boxes. So many low BW bulls just produce male progeny that have no carcass or doability and are just plain types that become average steers. Finding low BW sires that produce seedstock progeny is always a great challenge. Leopold is one of those bulls with many progeny now on the ground.

JOINING SIRE Allednaw Leopold (AKT R45E) (PP)

Photo as rising 2 year old.

| October 2023 Australasian Charolais BREEDPLAN Analysis | | | | | | |
|--|--------|------|---------|------|------|------|
| | CE Dir | GL | BW | 200 | 400 | 600 |
| EBV | +17.4 | -3.0 | -4.1 | +7 | +15 | +11 |
| Acc | 48% | 53% | 68% | 62% | 65% | 61% |
| | Milk | SS | Carc Wt | EMA | Rump | IMF |
| EBV | +6 | +1.2 | +14 | +0.9 | +0.7 | +0.4 |
| Acc | 48% | 45% | 53% | 35% | 38% | 34% |

LOT
24

GLENLEA
DAPPO 1ST (P)

TATTOO: GLE S510E
DOB: 10/08/2021

DOUGLASDALE WYOMING (DOU E2E)
SIRE: DOUGLASDALE M1 (DOU M1E) (P)
DOUGLASDALE OLIVE 2 (DOU D22E)

VERNOLA JUST RIGHT J6E (VIW J6E) (P/S)
DAM: ALLEDNAW DAPPO L15 (AKT L15E)
ALLEDNAW DAPPO H2E (AKT H2E) (P)

| October 2023 Australasian Charolais BREEDPLAN Analysis | | | | | | | | | | | | |
|--|--------|------|------|-----|-----|-----|------|------|---------|------|------|------|
| | CE Dir | GL | BW | 200 | 400 | 600 | Milk | SS | Carc Wt | EMA | Rump | IMF |
| EBV | +6.0 | -4.4 | +0.4 | +14 | +25 | +38 | +7 | +1.4 | +21 | +2.1 | +0.2 | +0.2 |
| Acc | 32% | 33% | 42% | 36% | 37% | 39% | 33% | 34% | 32% | 25% | 27% | 25% |

COMMENTS: Powerful Polled, deep bodied, big volumed female, carcass with finish.

Her dam is breeding outstanding progeny. Lot 7 is a maternal sister, put them together and establish a new cow family in your herd. All these joined heifer's have been selected from the replacement heifer mobs.

Sire is a Douglasdale bred bull loaded with Palgrove genetics, polled, great carcass. Low BW and early maturity. Dam is the outstanding L15 Dappo that we have detailed at Lot 7.

EBV's are excellent across all traits with 10 above breed average.



PTIC: AI to Belbourie Park Royalty (PP) 3/5/23 then run with Allednaw Leopold R45 (PP) 15/5/23 to 29/7/23.

LOT
25

GLENLEA
NOLANA 138TH (P)

TATTOO: GLE S333E
DOB: 14/08/2021

GLENLEA JUST RED (GLE J5E) (P)
SIRE: GLENLEA PHEONIX (GLE P41E) (P)
VALLEY VIEW ESTELLA 416 (VLW H26E) (P)

GLENLEA HI GUY (GLE H52E) (P)
DAM: ORARA WATERFALL NOLANA 1ST (WFA L10E) (P)
VALLEY VIEW NOLANA 11 (VLW H11E) (P)

| October 2023 Australasian Charolais BREEDPLAN Analysis | | | | | | | | | | | | |
|--|--------|------|------|-----|-----|-----|------|------|---------|------|------|------|
| | CE Dir | GL | BW | 200 | 400 | 600 | Milk | SS | Carc Wt | EMA | Rump | IMF |
| EBV | -10.3 | -2.5 | +2.5 | +21 | +44 | +64 | +12 | +1.6 | +34 | +2.3 | +0.4 | +0.5 |
| Acc | 34% | 42% | 46% | 42% | 44% | 43% | 32% | 44% | 37% | 33% | 36% | 32% |

COMMENTS: Lovely big strong polled heifer. She was picked out of 2yo Pheonix daughters and is the first to be offered.

Her dam is a impressive breeding cow producing 6 calves in the last 6 years with her sons selling for \$8000 and \$10,000 respectively in 2020 and 2022.

Her sire was our top price bull in 2020 at \$25,000 and has been used extensively. Note Red Factor daughters at Lot 43, 62 and 63.

Very impressive data with growth and carcass data, growth in top 2% of breed.



PTIC to MAW Glenlea Ashwood S38 (PP)
Due Feb / March

LOT
26

GLENLEA FAIRFIELD
CYRANO 5th S202 (PP)

TATTOO: GLE S202E
DOB: 12/11/2021

PARINGA RIO BRAVO D213E (TOL D213E) (P)
SIRE: **ELRIDGE LORD (RUJ L43E) (P)**
ELRIDGE HARMONY (RUJ H14E)

PALGROVE ZILLMAN (PK Z108E) (P) (AI)
DAM: **LVH-FAIRFIELD CYRANO H161 (LVH H161E) (P)**
KANDANGA VALLEY CYRANO (KAV C154E) (P)



October 2023 Australasian Charolais BREEDPLAN Analysis

| | CE Dir | GL | BW | 200 | 400 | 600 | Milk | SS | Carc Wt | EMA | Rump | IMF |
|-----|--------|------|------|-----|-----|-----|------|------|---------|------|------|------|
| EBV | 0.0 | -0.7 | +1.7 | +14 | +28 | +40 | +8 | +0.7 | +24 | +2.7 | +0.4 | +0.3 |
| Acc | 27% | 30% | 42% | 40% | 44% | 42% | 30% | 44% | 36% | 30% | 31% | 29% |

HOMOZYGOUS POLLED

COMMENTS: Big volumed, easy doing, easy finishing heifer - always been a heifer that stands out. Very docile temperament.

By the high-performance sire "Lord" whose progeny are so consistently good. Dam is a very highly valued cow that has same big volumed body and gentle nature.

Outstanding EBV'S with all growth and carcass traits above average, an outstanding female that is a real herd building female.

DNA SV and PP Polled.
Weighed 718kg on 18/11/23.



PTIC: Al to **Belbourie Park Royalty (PP)** 3/5/23 then run with **Alllednaw Leopold R45 (PP)** 15/5/23 to 29/7/23.

LOT
27

GLENLEA FAIRFIELD
S1186 (P) (R/F)

TATTOO: GLE S1186E
DOB: 18/11/2021

PARINGA RIO BRAVO D213E (TOL D213E) (P)
SIRE: **ELRIDGE LORD (RUJ L43E) (P)**
ELRIDGE HARMONY (RUJ H14E)

PALGROVE DEBUT (PK D619E)
DAM: **LVH-FAIRFIELD COLLEEN H238 (LVH H238E)**
JUANDAH COLLEEN (KEL C271E)



October 2023 Australasian Charolais BREEDPLAN Analysis

| | CE Dir | GL | BW | 200 | 400 | 600 | Milk | SS | Carc Wt | EMA | Rump | IMF |
|-----|--------|------|------|-----|-----|-----|------|------|---------|------|------|------|
| EBV | +0.4 | -1.5 | +1.8 | +17 | +34 | +51 | +7 | +1.4 | +29 | +3.1 | +0.0 | +0.4 |
| Acc | 25% | 29% | 42% | 37% | 41% | 39% | 27% | 42% | 33% | 28% | 29% | 28% |

COMMENTS: WOW! Long bodied, easy finishing very gentle nature, Polled and Red.

Outstanding sire that is a reference sire, a great Dam who has produced many top progeny.

EBV's that are breed leading and Phenotype that any charolais breeder would want in the paddock. We want you to share our best with you and this heifer is a great example.

DNA SV and Poll status Pending.
Weighed 640kg on 18/11/23.



PTIC: Al to **Belbourie Park Royalty (PP)** 3/5/23 then run with **Alllednaw Leopold R45 (PP)** 15/5/23 to 29/7/23.

LOT
28

GLENLEA
GALA 10TH (P)

TATTOO: GLE S51E
DOB: 11/10/2021

RANGAN PARK RIO BRAVO D15 (RAND15E) (AI) (ET) (P)
SIRE: GLENLEA KENWORTH (GLE K80E) (P)
THW TATT MAC D10E (THWD10E) (AI) (P)
ROSEDALE DINGA (MR D25E) (P)
DAM: JACKSON GALA (MEJ G6E) (P)
JAY TEES ADELPHI (JT A12E) (P)



HOMOZYGOUS POLLED

COMMENTS: So much to say about this heifer, she simply has it all. Maternal brother sold for \$20,000 at our 2022 Roma sale. Her 2022 drop maternal brother in our show team. Outstanding Dam and Sire. DNA SV and PP Polled. Weighed 676kg on 18/11/23.



October 2023 Australasian Charolais BREEDPLAN Analysis

| | CE Dir | GL | BW | 200 | 400 | 600 | Milk | SS | Carc Wt | EMA | Rump | IMF |
|-----|--------|------|------|-----|-----|-----|------|------|---------|------|------|------|
| EBV | -4.5 | -2.7 | +0.8 | +10 | +23 | +29 | +11 | +1.0 | +18 | +2.4 | +0.7 | +0.1 |
| Acc | 45% | 53% | 58% | 49% | 49% | 50% | 41% | 47% | 41% | 34% | 37% | 33% |

PTIC: AI to Belbourie Park Royalty (PP) 3/5/23 then run with Allednaw Leopold R45 (PP) 15/5/23 to 29/7/23.

LOT
29

GLENLEA FAIRFIELD
T131 (P)

TATTOO: GLE 22T131A
DOB: 12/01/2022

SIRE: FAIRFIELD STUD SIRE

PALGROVE DALLAS (PK D288E) (P)
DAM: LVH-FAIRFIELD CARLA H181 (LVH H181E) (P)
LVH-FAIRFIELD KARLA 3 (LVH E2E) (P)



COMMENTS: Extra easy finishing female, perfect structure, very gentle, smooth polled. From a Dam with a great production record. Sire did not have DNA recorded so is offered with an "A" registration. Only 22 months old. DNA recorded and Polled Weighed 664kg on 18/11/23.



October 2023 Australasian Charolais BREEDPLAN Analysis

| | CE Dir | GL | BW | 200 | 400 | 600 | Milk | SS | Carc Wt | EMA | Rump | IMF |
|-----|--------|------|------|-----|-----|-----|------|------|---------|------|------|------|
| EBV | -0.6 | -1.9 | +2.0 | +17 | +32 | +47 | +5 | +1.1 | +25 | +2.0 | +0.3 | +0.2 |
| Acc | 25% | 30% | 42% | 40% | 43% | 42% | 29% | 44% | 36% | 30% | 32% | 29% |

PTIC: AI to Belbourie Park Royalty (PP) 3/5/23 then run with Allednaw Leopold R45 (PP) 15/5/23 to 29/7/23.

LOT
30

GLENLEA
SCARLET (P) (R/F)

TATTOO: GLE S44E
DOB: 22/07/2021

PLEASANT DAWN CHISUM 216A (OAC J216E) (P)
SIRE: PALGROVE NIFTY (PK N458E) (P)
PALGROVE TREASURE L299E (PK L299E) (P)
ANC KILOWATT (ANC K96F) (P)
DAM: CALMVIEW EYE IMPAIR Q42E (CVW Q42E) (P)
CALMVIEW EYE IMPAIR J21E (CVW J21E) (P/S)



HOMOZYGOUS POLLED

COMMENTS: Early maturing thick bodied good doing heifer. Her carcass is from her Dam and early maturity from her sire, heifer's 1st calf. Fault free herd building heifer. We could say so much more, just give Rod or James a call to discuss individual females. DNA SV and PP polled. Weighed 650kg on 18/11/23.



October 2023 Australasian Charolais BREEDPLAN Analysis

| | CE Dir | GL | BW | 200 | 400 | 600 | Milk | SS | Carc Wt | EMA | Rump | IMF |
|-----|--------|------|------|-----|-----|-----|------|------|---------|------|------|------|
| EBV | +0.8 | -3.2 | -0.3 | +5 | +17 | +20 | +10 | +1.3 | +17 | +1.6 | -0.1 | -0.5 |
| Acc | 34% | 43% | 53% | 47% | 45% | 46% | 34% | 41% | 37% | 30% | 31% | 29% |

PTIC: AI to Belbourie Park Royalty (PP) 3/5/23 then run with Allednaw Leopold R45 (PP) 15/5/23 to 29/7/23.

LOT
31

GLENLEA
CONFIDENCE 40TH (P) (R/F)

TATTOO: GLE S57E
DOB: 27/11/2021

RANGAN PARK RIO BRAVO D15 (RAND15E) (AI) (ET) (P)
SIRE: GLENLEA KENWORTH (GLE K80E) (P)
 THW TATT MAC D10E (THWD10E) (AI) (P)
 LITTLE VALLEY GRANDIOSE (GKB G5E) (P)
DAM: ORARA WATERFALL GLENLEA CONFIDENCE 3RD (WFA M51E) (P)
 GLENLEA CONFIDENCE 9TH (GLE H103E) (P)

COMMENTS: We offer the good ones! Cow family nationally known, leading EBV's, sire is so consistent. Full sister was Reserve Champion heifer at BEEF 2021, breed leading phenotype! Gentle nature. DNA SV, PP Polled. Weighed 626kg on 18/11/23.



HOMOZYGOUS POLLED



October 2023 Australasian Charolais BREEDPLAN Analysis

| | CE Dir | GL | BW | 200 | 400 | 600 | Milk | SS | Carc Wt | EMA | Rump | IMF |
|-----|--------|------|------|-----|-----|-----|------|------|---------|------|------|------|
| EBV | -7.6 | -3.2 | +1.1 | +12 | +29 | +35 | +10 | +1.0 | +22 | +2.5 | +1.0 | +0.4 |
| Acc | 43% | 50% | 57% | 49% | 49% | 49% | 42% | 45% | 41% | 33% | 38% | 32% |

PTIC: AI to Belbourie Park Royalty (PP) 3/5/23 then run with Allednaw Leopold R45 (PP) 15/5/23 to 29/7/23.

LOT
32

GLENLEA
SARAH (P)

TATTOO: GLE S344A
DOB: 07/09/2021

GLENLEA JUST RED (GLE J5E) (P)
SIRE: GLENLEA PHEONIX (GLE P41E) (P)
 VALLEY VIEW ESTELLA 416 (VLW H26E) (P)

DAM: GLENLEA L102 (GLE L102)

COMMENTS: Big strong easy doing heifer, from an outstanding Purebred Base Dam, only our best base cows are recorded in the charolais herd book. Great milker, fine coated, good bone. DNA SV and PP Polled. Weighed 574kg on 18/11/23.



HOMOZYGOUS POLLED



October 2023 Australasian Charolais BREEDPLAN Analysis

| | CE Dir | GL | BW | 200 | 400 | 600 | Milk | SS | Carc Wt | EMA | Rump | IMF |
|-----|--------|------|------|-----|-----|-----|------|------|---------|------|------|------|
| EBV | -4.1 | -3.0 | +1.0 | +14 | +32 | +43 | | +1.1 | +28 | +1.3 | +0.3 | -0.1 |
| Acc | 27% | 36% | 39% | 33% | 34% | 34% | | 37% | 29% | 26% | 28% | 25% |

PTIC: AI to Belbourie Park Royalty (PP) 3/5/23 then run with Allednaw Leopold R45 (PP) 15/5/23 to 29/7/23.

LOT
33

GLENLEA
JANET140TH (P) (R/F)

TATTOO: GLE S319E
DOB: 29/07/2021

RANGAN PARK REDEMPTION E42 (RAN E42E) (P)
SIRE: GLENLEA JUST RED (GLE J5E) (P)
 GLENLEA JANET U6E R/F (GLE U6E) (P)
 RANGAN PARK PINAY F21 (RAN F21E) (P)
DAM: ALLEDNAW JANET J18E (AKT J18E) (P)
 GLENLEA JANET Z8E (GLE Z8E) (P)

COMMENTS: Softness, early maturity, perfect structure. 40+ year Glenlea cow family, nationally recognized EBV trait leading sire. It's always hard to offer heifers of this class. DNA SV and PP Polled. Weighed 608kg on 18/11/23.



HOMOZYGOUS POLLED



October 2023 Australasian Charolais BREEDPLAN Analysis

| | CE Dir | GL | BW | 200 | 400 | 600 | Milk | SS | Carc Wt | EMA | Rump | IMF |
|-----|--------|------|------|-----|-----|-----|------|------|---------|------|------|------|
| EBV | -6.6 | -3.5 | +1.3 | +15 | +29 | +40 | +3 | +0.2 | +23 | +1.7 | -0.2 | +0.2 |
| Acc | 45% | 52% | 57% | 53% | 52% | 53% | 49% | 51% | 46% | 39% | 43% | 38% |

PTIC: AI to Belbourie Park Royalty (PP) 3/5/23 then run with Allednaw Leopold R45 (PP) 15/5/23 to 29/7/23.

LOT
34

GLENLEA
FESTOON 17TH (P) (R/F)

TATTOO: GLE S321E
DOB: 04/08/2021

RANGAN PARK REDEMPTION E42 (RAN E42E) (P)
SIRE: GLENLEA JUST RED (GLE J5E) (P)
GLENLEA JANET U6E R/F (GLE U6E) (P)
LT LEDGER 0332 (OAU F3168E) (P)
DAM: HUNTER VIEW K3E (HV1 K3E) (P)
PALGROVE FESTOON 220 (PK D1042E)

COMMENTS: Fantastic Heifer out of our favorite Ledger cow, another nationally recognized cow family. Length, fine hair, and perfect balanced carcass, herd building female! DNA SV and PP Polled. Weighed 609kg on 18/11/23.



HOMOZYGOUS POLLED



October 2023 Australasian Charolais BREEDPLAN Analysis

| | CE Dir | GL | BW | 200 | 400 | 600 | Milk | SS | Carc Wt | EMA | Rump | IMF |
|-----|--------|------|------|-----|-----|-----|------|------|---------|------|------|------|
| EBV | -3.0 | -2.7 | +0.7 | +16 | +33 | +44 | +4 | +1.2 | +23 | +1.1 | +1.5 | +0.8 |
| Acc | 44% | 51% | 54% | 50% | 51% | 51% | 44% | 50% | 45% | 41% | 45% | 39% |

PTIC: AI to Belbourie Park Royalty (PP) 3/5/23 then run with Allednaw Leopold R45 (PP) 15/5/23 to 29/7/23.

LOT
35

GLENLEA
ADWANA 15TH (P) (R/F) (TW)

TATTOO: GLE S35E
DOB: 23/05/2021

RANGAN PARK REDEMPTION E42 (RAN E42E) (P)
SIRE: GLENLEA JUST RED (GLE J5E) (P)
GLENLEA JANET U6E R/F (GLE U6E) (P)
RANGAN PARK RIO BRAVO D15 (RAN D15E) (P)
DAM: GLENLEA ADAWNA 1ST (GLE K63E) (P)
MIXHILL ADAWNA (MIX A455E)

COMMENTS: One of the heaviest heifers in sale. Carcass and softness. A twin sister in next lot. Dam is donor, Adwana's have sold to \$16,000 at Auction. DNA SV and Polled. Weighed 658kg on 18/11/23.



October 2023 Australasian Charolais BREEDPLAN Analysis

| | CE Dir | GL | BW | 200 | 400 | 600 | Milk | SS | Carc Wt | EMA | Rump | IMF |
|-----|--------|------|------|-----|-----|-----|------|------|---------|------|------|------|
| EBV | -8.6 | -2.7 | +1.9 | +19 | +35 | +49 | +7 | +0.9 | +24 | +1.6 | +1.6 | +0.7 |
| Acc | 44% | 50% | 57% | 51% | 51% | 51% | 44% | 50% | 44% | 38% | 42% | 37% |

PTIC to Maw Glenlea Ashwood S38E (PP) from 10/8/23

LOT
36

GLENLEA
ADWANA 16TH (P) (R/F) (TW)

TATTOO: GLE S36E
DOB: 23/05/2021

RANGAN PARK REDEMPTION E42 (RAN E42E) (P)
SIRE: GLENLEA JUST RED (GLE J5E) (P)
GLENLEA JANET U6E R/F (GLE U6E) (P)
RANGAN PARK RIO BRAVO D15 (RAN D15E) (P)
DAM: GLENLEA ADAWNA 1ST (GLE K63E) (P)
MIXHILL ADAWNA (MIX A455E)

COMMENTS: Full sister to previous Lot, had set back in her preparation, fully recovered, big strong heifer. Will be a big strong easy doing cow. DNA SV and PP Polled. Weighed 576kg on 18/11/23.



HOMOZYGOUS POLLED



October 2023 Australasian Charolais BREEDPLAN Analysis

| | CE Dir | GL | BW | 200 | 400 | 600 | Milk | SS | Carc Wt | EMA | Rump | IMF |
|-----|--------|------|------|-----|-----|-----|------|------|---------|------|------|------|
| EBV | -8.6 | -2.7 | +1.9 | +19 | +35 | +49 | +7 | +0.9 | +24 | +1.6 | +1.6 | +0.7 |
| Acc | 44% | 50% | 57% | 51% | 51% | 51% | 44% | 50% | 44% | 38% | 42% | 37% |

PTIC to Maw Glenlea Ashwood S38E (PP) from 10/8/23

LOT
37

GLENLEA
NUNCIATA 123RD (R/F)

TATTOO: GLE S53E
DOB: 10/10/2021

WON-CANYA KOWBOY (RJU K4E) (P/S)
SIRE: GLENLEA KOWBOY Q405 (GLE Q405E) (P)
GLENLEA NOLANA 60TH (GLE G1E) (P/S)
PALGROVE DINKUM (PK D1028E) (P)
DAM: ALLEDNAW NUNCIATA G109 (AKT G109E) (P)
ALLEDNAW NUNCIATA C28 (AKT C28E)

COMMENTS: One of the biggest, strongest heifers in the sale. Her dam is donor, from one of Glenlea best known cow families. Sire has the lead group of sons for our 2024 sales. Gentle nature. DNA SV and Dam. Weighed 674kg on 18/11/23.



October 2023 Australasian Charolais BREEDPLAN Analysis

| | CE Dir | GL | BW | 200 | 400 | 600 | Milk | SS | Carc Wt | EMA | Rump | IMF |
|-----|--------|------|------|-----|-----|-----|------|------|---------|------|------|------|
| EBV | -4.7 | -1.8 | +1.6 | +15 | +31 | +43 | +7 | +0.7 | +25 | +1.5 | -0.3 | +0.3 |
| Acc | 31% | 33% | 42% | 37% | 38% | 41% | 31% | 41% | 33% | 28% | 30% | 27% |

PTIC to Maw Glenlea
Ashwood S38E (PP)
from 10/8/23

LOT
38

GLENLEA
BARONIA (P)

TATTOO: GLE S58E
DOB: 14/11/2021

ASCOT JUGGERNAUT J134E (JAJ J134E) (P)
SIRE: ASCOT MILESTONE M622E (JAJ M622E) (P/S)
ASCOT J119E (JAJ J119E) (P)
RANGAN ROUNDUP K18 (RAN K18E) (P)
DAM: HUON BARONIA 11 (DG1 N44E) (P)
HUON BARONIA 2 (DG1 J40E) (P)

COMMENTS: Carcass, finish and doability. Big capacity heifer that will breed on. Bloodlines and performance up with any. One of the standouts in the sale. DNA SV and Polled. Weighed 624kg on 18/11/23.



October 2023 Australasian Charolais BREEDPLAN Analysis

| | CE Dir | GL | BW | 200 | 400 | 600 | Milk | SS | Carc Wt | EMA | Rump | IMF |
|-----|--------|------|------|-----|-----|-----|------|------|---------|------|------|------|
| EBV | -4.3 | -1.9 | +0.7 | +16 | +30 | +40 | +6 | +2.4 | +25 | +2.5 | +0.3 | +0.4 |
| Acc | 33% | 45% | 51% | 45% | 45% | 47% | 36% | 45% | 39% | 33% | 37% | 33% |

PTIC: AI to Belbourie Park
Royalty (PP) 3/5/23 then run
with Allednaw Leopold R45
(PP) 15/5/23 to 29/7/23.

LOT
39

GLENLEA
BERNICE 1ST (P)

TATTOO: GLE S515E
DOB: 01/10/2021

DOUGLASDALE WYOMING (DOU E2E)
SIRE: DOUGLASDALE M1 (DOU M1E) (P)
DOUGLASDALE OLIVE 2 (DOU D22E)
DOUGLASDALE WYOMING (DOU E2E)
DAM: DOUGLASDALE L44 (DOU L44E) (P)
BARAMBAH-DALE BERNICE (DAV B31F)

COMMENTS: Great heifer, very balanced with eye appeal. Will breed well to many types of sires. Dam is high producing cow, Sire is breeding great progeny. Extra fine coated. DNA SV and PP Polled. Weighed 620kg on 18/11/23.



HOMOZYGOUS POLLED



October 2023 Australasian Charolais BREEDPLAN Analysis

| | CE Dir | GL | BW | 200 | 400 | 600 | Milk | SS | Carc Wt | EMA | Rump | IMF |
|-----|--------|------|------|-----|-----|-----|------|------|---------|------|------|------|
| EBV | +7.9 | -4.3 | -0.8 | +11 | +15 | +22 | +10 | +1.5 | +11 | +1.2 | +1.0 | +0.6 |
| Acc | 33% | 32% | 49% | 37% | 38% | 41% | 30% | 34% | 32% | 26% | 26% | 25% |

PTIC to Maw Glenlea
Ashwood S38E (PP)
from 10/8/23

LOT
40

GLENLEA
MELINDA 1ST (P) (R/F)

TATTOO: GLE S520E
DOB: 18/10/2021

DOUGLASDALE LUCA (DOU L34E)
SIRE: DOUGLASDALE PAXTON (DOU P21E) (P)
DOUGLASDALE ESTELLA (DOU D33E)
BAROOLA ZYGOTE (NCF Z48E) (P)
DAM: BAROOLA MAY G395E (NCF G395E) (P)
BAROOLA MAY D998D (NCF D998D) (P)

COMMENTS: The softness and length in this heifer. Fantastic Dam that still in herd at 12 years and has an udder that looks like 3YO, one of our favorites, so gentle in nature. Sire has left great carcass progeny with extra finish. DNA SV and Polled. Weighed 640kg on 18/11/23.



October 2023 Australasian Charolais BREEDPLAN Analysis

| | CE Dir | GL | BW | 200 | 400 | 600 | Milk | SS | Carc Wt | EMA | Rump | IMF |
|-----|--------|------|------|-----|-----|-----|------|------|---------|------|------|------|
| EBV | +2.8 | -2.5 | +0.3 | +9 | +18 | +24 | +8 | +1.4 | +15 | +0.9 | -0.7 | +0.1 |
| Acc | 33% | 34% | 48% | 42% | 41% | 44% | 37% | 34% | 36% | 25% | 28% | 25% |

PTIC to Maw Glenlea
Ashwood S38E (PP)
from 10/8/23

LOT
41

GLENLEA
ESTELLA 40TH (P)

TATTOO: GLE S523E
DOB: 23/11/2021

DOUGLASDALE WYOMING (DOU E2E)
SIRE: DOUGLASDALE M1 (DOU M1E) (P)
DOUGLASDALE OLIVE 2 (DOU D22E)
AIRLIE Z47E (A1S Z47E)
DAM: DOUGLASDALE ESTELLA (DOU D33E)
PALGROVE ESTELLA 87 (PK T130E)

COMMENTS: Growth, carcass, nationally known cow family - another herd builder, they all are!! We are committed to offering from our best females to help you build your Charolais herd, whether 1 or 1000. DNA SV and PP Polled. Weighed 622 kg on 18/11/21



HOMOZYGOUS POLLED



October 2023 Australasian Charolais BREEDPLAN Analysis

| | CE Dir | GL | BW | 200 | 400 | 600 | Milk | SS | Carc Wt | EMA | Rump | IMF |
|-----|--------|------|------|-----|-----|-----|------|------|---------|------|------|-----|
| EBV | +6.3 | -3.2 | -0.2 | +8 | +11 | +16 | +5 | +1.1 | +8 | +1.1 | +0.3 | |
| Acc | 34% | 32% | 50% | 42% | 44% | 47% | 34% | 37% | 37% | 26% | 26% | |

PTIC to Maw Glenlea
Ashwood S38E (PP)
from 10/8/23

James & Jane Dockrill
James: 0400 387 116
Jane: 0438 812 240
Ph: 02 66 63 1274
E: pinedock@gmail.com

The Dockrill family are an integral part of Glenlea Beef and provide a range of services, from feeding and showing our cattle, preparing bulls for our range of bull sales, marketing photos, clipping and video taking, production and editing. Additionally an increasing amount of private bulls directly from their Casino, NSW property.

All the rest of the Glenlea Beef team thank them for all their support, input and hard work without which Glenlea Beef could not operate in the way it does currently.

LOT
42

CORRY'S GLEN
ANGEL RIO BRAVO (AI) (ET) (P)

TATTOO: WEC 22T15E
DOB: 20/02/2022

LT RIO BLANCO 1234 P (OAU W591E) (P)
SIRE: LT RIO BRAVO 3181 P (OAU Y5507E) (P)
LT 7N OF DUKE 9083 PLD (OAU U2553E) (P)

WCR SIR FA MAC 2244 (OAU B2244E) (P)
DAM: THW ANGEL (THW G7E) (P)
FERNVALE ANGEL (FEN A30E)

| October 2023 Australasian Charolais BREEDPLAN Analysis | | | | | | | | | | | | |
|--|--------|------|------|-----|-----|-----|------|------|---------|------|------|------|
| | CE Dir | GL | BW | 200 | 400 | 600 | Milk | SS | Carc Wt | EMA | Rump | IMF |
| EBV | +2.6 | -4.7 | -0.1 | +15 | +39 | +60 | +14 | +1.7 | +30 | +1.9 | +2.9 | +1.6 |
| Acc | 56% | 58% | 62% | 60% | 60% | 59% | 59% | 58% | 56% | 52% | 54% | 52% |

COMMENTS: Angel is the next generation from nationally recognized cow family. Extremely proven sire, predictable high-performance genetics. 4 generations of donor cow in from her Dam back to her G.G.Grand Dam and an Interbreed Champion at Brisbane Royal and BEEF 94. Big, easy doing heifer, fine hair, plenty of finish, perfectly reflecting her EBV's in the flesh. One of the heaviest heifers in the sale and only 21 months old. **Donor prospect.**



DNA recorded, Dam verified and tested Polled. As no SNP profile is on file for this heifer's sire the society has no further DNA testing requirements. Any questions on this please speak with Rod Binny or the charolais office. Weighed 678kg on 18/11/23.

PTIC: AI to **Belbourie Park Royalty (PP)** 3/5/23 then run with **Allednaw Leopold R45 (PP)** 15/5/23 to 29/7/23.

LOT
43

GLENLEA
LADY PHOENIX T213 (P) (R/F)

TATTOO: GLE 22T312E
DOB: 16/06/2022

GLENLEA JUST RED (GLE J5E) (P)
SIRE: GLENLEA PHEONIX (GLE P41E) (P)
VALLEY VIEW ESTELLA 416 (VLW H26E) (P)

GLENLEA FREEWAY (GLE F22E) (P)
DAM: GOODVIEW ALICIA 2ND (HEL K2E) (P)
GOODVIEW ALICIA (HEL A2E) (P)

| October 2023 Australasian Charolais BREEDPLAN Analysis | | | | | | | | | | | | |
|--|--------|------|------|-----|-----|-----|------|------|---------|------|------|------|
| | CE Dir | GL | BW | 200 | 400 | 600 | Milk | SS | Carc Wt | EMA | Rump | IMF |
| EBV | -4.3 | -2.7 | +1.8 | +20 | +41 | +59 | +9 | +1.6 | +31 | +1.7 | +0.7 | +0.4 |
| Acc | 32% | 39% | 46% | 39% | 40% | 40% | 30% | 40% | 34% | 31% | 32% | 30% |

COMMENTS: The highest growth joined heifer in sale. Admired by everyone that has seen her for her growth, length of body, bone, loose hide, fine hair, perfect structure and gentle nature. Dam is long bodied, strong polled cow that has produced outstanding progeny to any sire. Pheonix, her sire has top 1% of breed growth and is a reference sire. Another 3 daughters of Pheonix are offered at lot 25, 62 and 63.



If you're after a special red factor female that has future donor potential Lady Pheonix may be the one for you!

DNA SV and Polling pending. Weight on 18/11/23 624kg at 16 months

PTIC to **Maw Glenlea Ashwood S38E (PP)**
hand mated 28/9/23

~ PTIC Heifers ~

The Waterford herd is based in Victoria, a well know charolais stud herd operated by mother / daughter team Deborah and Sapphire Halliday.

Their success in the show ring is very well known and stud's sales of numerous stud sires to leading QLD studs including Palgrove and Moongool are more than any other stud herd in Victoria. Glenlea purchased a Waterford sire in 2022 and his first calves are outstanding. Over the years many outstanding individual females have been offered from the Waterford herd but never in numbers.

The Waterford prefix heifers from Lot 44 to 61 are a complete draft of the spring drop 2021 heifers. Never before has such a large group of 2 year old joined heifer's been offered in one sale with the Waterford Charolais brand. The only "S" heifer's not offered in this group are animals that had issues or were hand reared.

The decision was made to offer these as a group in this special sale for all interested parties to invest in to prepare for the next boom cycle in the cattle market! **Opportunity knocks!**

LOT
44

WATERFORD SUGARSNAP S14E

TATTOO: WET S14E

DOB: 14/03/2021

TEMANA GOLDEN LOGIE G66E (TJ G66E) (P)
SIRE: MOONGOOL MONOPOLY (DP2 M513E) (P)
MOONGOOL BUNYA VALE 4 (DP2 C155E) (P)

MINNIE-VALE FULL THROTTLE (SGS F145E)
DAM: WATERFORD LUBUMBA M132E (WET M132E)
BRYSON BY LUBUMBA (BRI D16E) (P)

October 2023 Australasian Charolais BREEDPLAN Analysis

| | CE Dir | GL | BW | 200 | 400 | 600 | Milk | SS | Carc Wt | EMA | Rump | IMF |
|-----|--------|------|------|-----|-----|-----|------|------|---------|-----|------|-----|
| EBV | +0.6 | -1.1 | +0.8 | +8 | +22 | +35 | +9 | +0.8 | +20 | | -0.3 | |
| Acc | 35% | 37% | 49% | 40% | 41% | 44% | 33% | 41% | 36% | | 27% | |

COMMENTS: Lovely big strong 1st calver to start off the Waterford Prefix heifers. Length of body, bone, fine hair type, ideal beef udder.

S14 is sired by the 2018 grand champion bull at Brisbane Royal, Monopoly who has produced several crops of outstanding progeny. S14 Dam, is a big strong cow producing outstanding progeny. DNA SV

Polled heifer calf at foot born 1/11/23
Calf sire: Waterford Real Deal R11E (PP) a Homozgous Polled son of Palgrove Moderator (P) selected to join to heifers.



Offered Unjoined

LOT
45

WATERFORD
SUGAR BELLE S10E (P)

TATTOO: WET S10E
DOB: 09/10/2021

TEMANA GOLDEN LOGIE G66E (TJ G66E) (P)
SIRE: **MOONGOOL MONOPOLY (DP2 M513E) (P)**
MOONGOOL BUNYA VALE 4 (DP2 C155E) (P)
MOONGOOL JUST A GIGOLO J281E (DP2 J281E) (P)
DAM: **WATERFORD BLUE BELLE N45E (WET N45E) (P)**
WATERFORD BLUEBELLE K88E (WET K88E)



COMMENTS: Deep, square, early maturing, Double Polled.
Excellent EBVs, great balance of carcass and finish. Dam is a young cow producing standout progeny. DNA SV and Polled.

October 2023 Australasian Charolais BREEDPLAN Analysis

| | CE Dir | GL | BW | 200 | 400 | 600 | Milk | SS | Carc Wt | EMA | Rump | IMF |
|-----|--------|------|------|-----|-----|-----|------|------|---------|------|------|------|
| EBV | +1.4 | -1.2 | +1.0 | +10 | +22 | +34 | +6 | +1.0 | +18 | +1.3 | +0.2 | +0.4 |
| Acc | 36% | 40% | 53% | 41% | 43% | 46% | 31% | 42% | 37% | 26% | 29% | 26% |

PTIC to
Waterford Real Deal (PP)
due March.

LOT
46

WATERFORD
S39E (AI) (P)

TATTOO: WET S39E
DOB: 07/09/2021

PALGROVE JUBILEE (PK J395E) (P)
SIRE: **PALGROVE MODERATOR (PK M544E) (P)**
PALGROVE FELICITY J1046 (PK J1046E) (P)
MOUNT WILLIAM FERGUS (BS F2E) (P)
DAM: **MOUNT WILLIAM KITCHEN K136 (BS K136E)**
MOUNT WILLIAM FAITH F1 (BS F1E)



COMMENTS: Early maturing, medium framed, strong polled head and carcass. Big volumed, easy doing Dam. Sired by trait leading sire **Moderator**, see his photo and details on last page. DNA SV and Polled.

October 2023 Australasian Charolais BREEDPLAN Analysis

| | CE Dir | GL | BW | 200 | 400 | 600 | Milk | SS | Carc Wt | EMA | Rump | IMF |
|-----|--------|------|------|-----|-----|-----|------|------|---------|------|------|------|
| EBV | +4.9 | -4.0 | +0.3 | +17 | +34 | +49 | +8 | +1.2 | +35 | +2.8 | -0.6 | -0.4 |
| Acc | 35% | 71% | 53% | 47% | 50% | 51% | 36% | 50% | 44% | 38% | 41% | 37% |

PTIC to
Waterford Real Deal (PP)
due Feb / March.

LOT
47

WATERFORD
S38E (AI) (P)

TATTOO: WET S38E
DOB: 14/09/2021

PALGROVE JUBILEE (PK J395E) (P)
SIRE: **PALGROVE MODERATOR (PK M544E) (P)**
PALGROVE FELICITY J1046 (PK J1046E) (P)
PALGROVE HERMES (PK H549E) (P)
DAM: **WATERFORD PRINCESS DIANNA N50E (WET N50E) (P)**
MOONGOOL DIANNA 2 (DP2 J254E) (P)



HOMOZYGOUS POLLED

COMMENTS: Very eye appealing heifer. All Palgrove bloodlines with a Moongool cow family. **Herd building female!** Outstanding EBV's. DNA SV and PP Polled.

October 2023 Australasian Charolais BREEDPLAN Analysis

| | CE Dir | GL | BW | 200 | 400 | 600 | Milk | SS | Carc Wt | EMA | Rump | IMF |
|-----|--------|------|------|-----|-----|-----|------|------|---------|------|------|------|
| EBV | +2.3 | -0.4 | +1.0 | +14 | +29 | +43 | +7 | +1.7 | +27 | +1.8 | +0.1 | -0.4 |
| Acc | 37% | 71% | 56% | 48% | 50% | 51% | 37% | 51% | 43% | 38% | 42% | 38% |

PTIC to
Waterford Real Deal (PP)
due Feb / March.

LOT
48

WATERFORD
S43E (AI) (P)

TATTOO: WET S43E
DOB: 09/09/2021

VENTURON KEYSTONE (VE7 K14E) (P)
SIRE: VENTURON MAXIMUM IMPACT (VE7 M60E) (P)
VENTURON HILLARY (VE7 H43E) (P)
GAUGUIN 8591105891 (OAF L859F)
DAM: WATERFORD LILLUM L23E (WET L23E)
WATERFORD ESTRA 2 G51E (WET G51E) (P/S)

COMMENTS: Phenotype, Genetics, EBV's - it's a common theme throughout this sale. Sire's semen has been exported internationally. Dam is deep square cow by French sire Gauguin. DNA SV and Polled.



October 2023 Australasian Charolais BREEDPLAN Analysis

| | CE Dir | GL | BW | 200 | 400 | 600 | Milk | SS | Carc Wt | EMA | Rump | IMF |
|-----|--------|------|------|-----|-----|-----|------|------|---------|------|------|------|
| EBV | -2.4 | -3.9 | +1.5 | +18 | +36 | +47 | +9 | +0.7 | +28 | +2.5 | -0.1 | +0.4 |
| Acc | 42% | 73% | 58% | 44% | 45% | 47% | 38% | 37% | 38% | 32% | 37% | 33% |

PTIC to
Waterford Real Deal (PP)
due Feb / March.

LOT
49

WATERFORD
S46E (AI) (P)

TATTOO: WET S46E
DOB: 18/09/2021

PALGROVE JUBILEE (PK J395E) (P)
SIRE: PALGROVE MODERATOR (PK M544E) (P)
PALGROVE FELICITY J1046 (PK J1046E) (P)
PALGROVE B-DOUBLE S WW1547XBA02470 (PK B21E) (P)
DAM: WATERFORD FLORENCE NIGHTINGALE (WET F26E) (P)
WATERFORD ZENA (WET Z11E) (P/S)

COMMENTS: More frame and length coming from her Dam with British genetics, will grow into a big, heavy cow. Fine hair type, and lovely strong polled head. DNA SV and PP Polled



HOMOZYGOUS POLLED

October 2023 Australasian Charolais BREEDPLAN Analysis

| | CE Dir | GL | BW | 200 | 400 | 600 | Milk | SS | Carc Wt | EMA | Rump | IMF |
|-----|--------|------|------|-----|-----|-----|------|------|---------|------|------|------|
| EBV | -2.4 | +0.6 | +1.3 | +16 | +30 | +45 | +5 | +0.6 | +28 | +1.5 | +0.1 | -0.1 |
| Acc | 37% | 72% | 56% | 50% | 53% | 53% | 42% | 52% | 45% | 39% | 43% | 39% |

PTIC to Maw Glenlea
Ashwood S38E (PP)
joined from 10/8/23.

LOT
50

WATERFORD
S58E

TATTOO: WET S58E
DOB: 20/10/2021

PALGROVE HERMES (PK H549E) (P)
SIRE: WATERFORD NEON LIGHTS N35E (WET N35E) (P)
WATERFORD ELECTRA 2 G174E (WET G174E) (P/S)
GAUGUIN 8591105891 (OAF L859F)
DAM: WATERFORD LUNE DE MIEL L10E (WET L10E) (P)
WATERFORD W15E (WET W15E) (P)

COMMENTS: One of best yielding carcass females in the draft, good bone and overall thickness. Dam is another great Gauguin cow. DNA SV



October 2023 Australasian Charolais BREEDPLAN Analysis

| | CE Dir | GL | BW | 200 | 400 | 600 | Milk | SS | Carc Wt | EMA | Rump | IMF |
|-----|--------|------|------|-----|-----|-----|------|------|---------|------|------|------|
| EBV | -2.1 | -0.1 | +1.5 | +13 | +21 | +29 | +3 | +0.2 | +15 | +0.7 | -1.1 | -0.1 |
| Acc | 37% | 48% | 48% | 45% | 47% | 47% | 38% | 39% | 41% | 34% | 38% | 33% |

PTIC to Maw Glenlea
Ashwood S38E (PP)
joined from 10/8/23.

LOT
51

WATERFORD
S47E (AI) (P)

TATTOO: WET S47E
DOB: 08/09/2021

SPARROWS DURANGO 585P PED-9528E
SIRE: WINN MANS LANZA 610S (OAC B7395E) (P)
WINN MAN MERIT 036K PED-7547E
WATERFORD MR WORLDWIDE M48E (WET M48E) (P)
DAM: WATERFORD QUEEN OF HEARTS Q26E (WET Q26E) (P)
PALGROVE EIGHTEEN KARAT M791E (PK M791E)



COMMENTS: Only daughter in sale by curve bending trait leader sire Lanza. Good framed, feminine, lovely polled head, unique genetics. DNA SV and Polled

October 2023 Australasian Charolais BREEDPLAN Analysis

| | CE Dir | GL | BW | 200 | 400 | 600 | Milk | SS | Carc Wt | EMA | Rump | IMF |
|-----|--------|------|------|-----|-----|-----|------|------|---------|------|------|------|
| EBV | +3.8 | -3.4 | -0.2 | +7 | +14 | +17 | +9 | +0.9 | +12 | +0.9 | +0.1 | -0.4 |
| Acc | 31% | 69% | 50% | 39% | 40% | 39% | 33% | 41% | 32% | 27% | 29% | 27% |

PTIC to Maw Glenlea
Ashwood S38E (PP)
joined from 10/8/23.

LOT
52

WATERFORD
S49E (AI) (P)

TATTOO: WET S49E
DOB: 07/09/2021

PALGROVE JUBILEE (PK J395E) (P)
SIRE: PALGROVE MODERATOR (PK M544E) (P)
PALGROVE FELICITY J1046 (PK J1046E) (P)
PALGROVE HALLMARK (PK H535E) (P)
DAM: WATERFORD PETUNIA P28E (WET P28E) (P)
WATERFORD FLORENCE NIGHTINGALE (WET F26E) (P)



COMMENTS: Faultless early maturing female. Lovely nature, great data, easy doing thick bodied type, a herd building female. Dam is one of the best "P" drop females in the herd. DNA SV and PP Polled

HOMOZYGOUS POLLED

October 2023 Australasian Charolais BREEDPLAN Analysis

| | CE Dir | GL | BW | 200 | 400 | 600 | Milk | SS | Carc Wt | EMA | Rump | IMF |
|-----|--------|------|------|-----|-----|-----|------|------|---------|------|------|------|
| EBV | +1.2 | -3.2 | +0.5 | +16 | +33 | +43 | +5 | +1.3 | +31 | +2.6 | +0.5 | -0.3 |
| Acc | 38% | 68% | 55% | 49% | 51% | 52% | 40% | 52% | 45% | 39% | 43% | 39% |

PTIC to Maw Glenlea
Ashwood S38E (PP)
joined from 10/8/23.

LOT
53

WATERFORD
STORM S53E (P)

TATTOO: WET S53E
DOB: 10/10/2021

PALGROVE CALIBRE (PK C264E) (P)
SIRE: PALGROVE HERMES (PK H549E) (P)
PALGROVE ESTELLA 304 (PK E98E) (AI) (ET) (P)
LANGI GHIRAN ELTON (JRR E5E) (P)
DAM: LANGI GHIRAN ESTELLA 17 (JRR G30E) (P)
LANGI GHIRAN ESTELLA 10 (JRR E23E)

COMMENTS: Only daughter of Palgrove Hermes (P) senior sire in sale. Photo and video will be available before sale on AuctionsPlus. Great dam from the nationally recognized Estella cow family.

October 2023 Australasian Charolais BREEDPLAN Analysis

| | CE Dir | GL | BW | 200 | 400 | 600 | Milk | SS | Carc Wt | EMA | Rump | IMF |
|-----|--------|------|------|-----|-----|-----|------|------|---------|------|------|------|
| EBV | -1.5 | -1.6 | +1.1 | +12 | +24 | +35 | +8 | +1.4 | +20 | +1.3 | +0.3 | -0.2 |
| Acc | 34% | 40% | 45% | 39% | 41% | 41% | 34% | 35% | 35% | 28% | 32% | 27% |

PTIC to Maw Glenlea
Ashwood S38E (PP)
joined from 10/8/23.

LOT
54

WATERFORD
S50E (R/F)

TATTOO: WET S50E
DOB: 09/10/2021

PALGROVE HERMES (PK H549E) (P)
SIRE: WATERFORD NEON LIGHTS N35E (WET N35E) (P)
WATERFORD ELECTRA 2 G174E (WET G174E) (P/S)
SILVERSTREAM EVOLUTION E168 (OAN E168E) (P)
DAM: MOONGOOL DIANNA 2 (DP2 J254E) (P)
AIRLIE DIANNA W256F (A1S W256F)

COMMENTS: Another good bodied heifer, over all yield, bone and strong head. Dam is donor cow who was Junior Champion at Brisbane Royal in her show career and herself from the famous French Dianna cow family at Airlie. DNA SV.



October 2023 Australasian Charolais BREEDPLAN Analysis

| | CE Dir | GL | BW | 200 | 400 | 600 | Milk | SS | Carc Wt | EMA | Rump | IMF |
|-----|--------|------|------|-----|-----|-----|------|------|---------|------|------|------|
| EBV | -2.2 | +0.1 | +2.0 | +11 | +21 | +31 | +5 | +0.9 | +16 | +0.7 | -0.1 | -0.1 |
| Acc | 39% | 44% | 51% | 45% | 46% | 46% | 40% | 40% | 40% | 34% | 37% | 34% |

PTIC to Maw Glenlea
Ashwood S38E (PP)
joined from 10/8/23.

LOT
55

WATERFORD
S62E (R/F)

TATTOO: WET S62E
DOB: 06/12/2021

PALGROVE HERMES (PK H549E) (P)
SIRE: WATERFORD NEON LIGHTS N35E (WET N35E) (P)
WATERFORD ELECTRA 2 G174E (WET G174E) (P/S)
PALGROVE DEAN (PK D217E) (P)
DAM: WATERFORD AQUAMARINE (1) H1E (WET H1E)
WATERFORD AQUAMARINE A32 (WET A32E)

COMMENTS: One of the youngest heifers in the group. Long bodied, slick skinned, balanced carcass and finish. Dam is a great matron at 11 years old, both Sire and Dam are red, DNA SV.



October 2023 Australasian Charolais BREEDPLAN Analysis

| | CE Dir | GL | BW | 200 | 400 | 600 | Milk | SS | Carc Wt | EMA | Rump | IMF |
|-----|--------|------|------|-----|-----|-----|------|------|---------|------|------|------|
| EBV | -1.9 | -1.1 | +1.3 | +10 | +19 | +31 | +5 | +1.2 | +15 | +0.8 | +0.7 | +0.2 |
| Acc | 33% | 38% | 45% | 41% | 43% | 44% | 34% | 37% | 38% | 30% | 36% | 31% |

PTIC to Maw Glenlea
Ashwood S38E (PP)
joined from 10/8/23.

LOT
56

WATERFORD
S41E (AI) (P)

TATTOO: WET S41E
DOB: 10/09/2021

LT EASY BLEND 5125 PLD (OAU A5113E) (P)
SIRE: LT CHEYENNE BLEND 7142 P (OAU C2067E) (P)
LT ALLI 3221 PLD (PED -9387E)
PALGROVE HERMES (PK H549E) (P)
DAM: WATERFORD PEONY P127E (WET P127E) (P)
WATERFORD WILDFLOWER M27E (WET M27E) (P)

COMMENTS: Early maturing moderate frame heifer, extra softness. Dam is from a nationally recognized cow family with stud sires royal show champions. Sire is a very well known sire from the USA. DNA SV and Polled



October 2023 Australasian Charolais BREEDPLAN Analysis

| | CE Dir | GL | BW | 200 | 400 | 600 | Milk | SS | Carc Wt | EMA | Rump | IMF |
|-----|--------|------|------|-----|-----|-----|------|------|---------|------|------|------|
| EBV | +5.2 | -2.1 | -1.3 | +10 | +20 | +21 | +8 | +1.0 | +13 | +0.0 | +3.1 | +0.4 |
| Acc | 46% | 72% | 56% | 52% | 52% | 52% | 50% | 51% | 47% | 40% | 44% | 40% |

PTIC to Maw Glenlea
Ashwood S38E (PP)
joined from 10/8/23.

LOT
57

WATERFORD
S45E (AI) (P)

TATTOO: WET S45E
DOB: 12/09/2021

WATERFORD GIBRALTAR G82E (WET G82E) (P)
SIRE: WATERFORD LIONHEART L34E (WET L34E) (P)
WATERFORD ZENA (WET Z11E) (P/S)
COLINTA LEVI (ISA L5044E) (P)
DAM: WATERFORD PRINCESS ELECTRA P34 (WET P34E) (P)
WATERFORD ELECTRA 2 G174E (WET G174E) (P/S)

COMMENTS: Strong bodied, excellent overall yield, easy finishing type. This sire's progeny has done very well in Queensland, with a son becoming a lead sire in the Kandanga valley stud. Dam is a standout "P" female. DNA SV and PP Polled



HOMOZYGOUS POLLED

October 2023 Australasian Charolais BREEDPLAN Analysis

| | CE Dir | GL | BW | 200 | 400 | 600 | Milk | SS | Carc Wt | EMA | Rump | IMF |
|-----|--------|------|------|-----|-----|-----|------|------|---------|------|------|------|
| EBV | -4.9 | -0.8 | +1.5 | +9 | +23 | +31 | +6 | +1.2 | +19 | +1.7 | +0.1 | +0.2 |
| Acc | 36% | 66% | 53% | 50% | 50% | 50% | 36% | 48% | 42% | 36% | 39% | 35% |

PTIC to Maw Glenlea
Ashwood S38E (PP)
joined from 10/8/23.

LOT
58

WATERFORD
S59E (P)

TATTOO: WET S59E
DOB: 06/12/2021

PALGROVE HERMES (PK H549E) (P)
SIRE: WATERFORD NEON LIGHTS N35E (WET N35E) (P)
WATERFORD ELECTRA 2 G174E (WET G174E) (P/S)
MOONGOOL ERNIE (DP2 E173E) (P)
DAM: WATERFORD GISELLE G72E (WET G72E) (P)
FALLS VIEW BRANDY (CHH B17E) (P)

COMMENTS: Long bodied, eye appealing heifer. Strong cow family, all positive data, fine hair type, excellent structure. DNA SV and Polled.



October 2023 Australasian Charolais BREEDPLAN Analysis

| | CE Dir | GL | BW | 200 | 400 | 600 | Milk | SS | Carc Wt | EMA | Rump | IMF |
|-----|--------|------|------|-----|-----|-----|------|------|---------|------|------|------|
| EBV | -2.7 | -0.5 | +1.0 | +10 | +25 | +30 | +4 | +1.3 | +18 | +1.0 | +1.7 | +0.0 |
| Acc | 36% | 44% | 50% | 45% | 48% | 49% | 39% | 38% | 42% | 32% | 40% | 32% |

PTIC to Maw Glenlea
Ashwood S38E (PP)
joined from 10/8/23.

LOT
59

WATERFORD
S51E (P) (R/F)

TATTOO: WET S51E
DOB: 05/10/2021

TEMANA GOLDEN LOGIE G66E (TJ G66E) (P)
SIRE: MOONGOOL MONOPOLY (DP2 M513E) (P)
MOONGOOL BUNYA VALE 4 (DP2 C155E) (P)
PALGROVE XODUS (PK X22E)
DAM: PALGROVE ELEGANCE 82 (PK D145E)
BAROOLA UTOPIA 2 (NCF A112E)

COMMENTS: Super slick skinned, balanced heifer. Strong Palgrove dam tracing back to a top cow family, purchased by Palgrove from the Baroola herd dispersal, so you know that she was a good one! DNA SV and Polled.



October 2023 Australasian Charolais BREEDPLAN Analysis

| | CE Dir | GL | BW | 200 | 400 | 600 | Milk | SS | Carc Wt | EMA | Rump | IMF |
|-----|--------|------|------|-----|-----|-----|------|------|---------|------|------|------|
| EBV | -7.6 | -0.7 | +1.7 | +14 | +26 | +35 | +8 | +0.7 | +18 | +0.8 | +0.1 | +0.1 |
| Acc | 39% | 48% | 49% | 48% | 49% | 48% | 46% | 43% | 43% | 35% | 38% | 35% |

PTIC to Maw Glenlea
Ashwood S38E (PP)
joined from 10/8/23.

LOT
60

WATERFORD S57E (P) (R/F)

TATTOO: WET S57E
DOB: 01/11/2021

PALGROVE HERMES (PK H549E) (P)
SIRE: WATERFORD NEON LIGHTS N35E (WET N35E) (P)
WATERFORD ELECTRA 2 G174E (WET G174E) (P/S)
GERRARD MONTEZUMA 6T (OAC C3106E) (P)
DAM: WATERFORD LOU LOU L12E (WET L12E) (P)
WATERFORD DREAMWEAVER F16 (WET F16E) (P)



COMMENTS: Medium framed heifer, **unique Dam bloodlines**, excellent data, good bone, fine hair type. DNA SV and Polled.



October 2023 Australasian Charolais BREEDPLAN Analysis

| | CE Dir | GL | BW | 200 | 400 | 600 | Milk | SS | Carc Wt | EMA | Rump | IMF |
|-----|--------|------|------|-----|-----|-----|------|------|---------|------|------|------|
| EBV | -5.6 | -1.7 | +1.8 | +15 | +24 | +39 | +4 | +1.3 | +19 | +0.8 | +1.0 | +0.0 |
| Acc | 34% | 47% | 49% | 44% | 47% | 47% | 35% | 37% | 41% | 32% | 37% | 33% |

**PTIC to Maw Glenlea
Ashwood S38E (PP)**
joined from 10/8/23.

LOT
61

WATERFORD S60E (P) (R/F)

TATTOO: WET S60E
DOB: 17/11/2021

PALGROVE HERMES (PK H549E) (P)
SIRE: WATERFORD NEON LIGHTS N35E (WET N35E) (P)
WATERFORD ELECTRA 2 G174E (WET G174E) (P/S)
CJC SYMBOL B1067 (OAC K1067E) (P)
DAM: WATERFORD PERIDOT P36E (WET P36E) (P)
WATERFORD CRYSTAL C23 (WET C23E)



COMMENTS: The last "Neon" joined heifer in sale. Long bodied, excellent structure, strong polled head. Unique Dam genetics from the Debruckyer herd in the USA, who sell 1000 bulls a year! She carries the red gene, although light straw colored herself. DNA SV and Polled.



October 2023 Australasian Charolais BREEDPLAN Analysis

| | CE Dir | GL | BW | 200 | 400 | 600 | Milk | SS | Carc Wt | EMA | Rump | IMF |
|-----|--------|------|------|-----|-----|-----|------|------|---------|-----|------|-----|
| EBV | -4.3 | -0.8 | +1.4 | +12 | +23 | +30 | +5 | +1.1 | +16 | | +0.5 | |
| Acc | 31% | 39% | 43% | 36% | 39% | 38% | 28% | 31% | 32% | | 27% | |

**PTIC to Maw Glenlea
Ashwood S38E (PP)**
joined from 10/8/23.

REFERENCE SIRE PALGROVE MODERATOR (P)

TATTOO: PK M544E
DOB: 24/08/2016
COLOUR: White



October 2023 Australasian Charolais BREEDPLAN Analysis

| | CE Dir | GL | BW | 200 | 400 | 600 | Milk | SS | Carc Wt | EMA | Rump | IMF |
|-----|--------|------|------|-----|-----|-----|------|------|---------|------|------|------|
| EBV | +2.6 | -1.3 | +1.1 | +23 | +46 | +68 | +7 | +2.3 | +45 | +3.1 | -0.2 | -0.6 |
| Acc | 53% | 86% | 78% | 76% | 82% | 83% | 55% | 85% | 71% | 63% | 68% | 62% |

SIRE: PALGROVE JUBILEE (PK J395E) (AI) (P)
DAM: PALGROVE FELICITY J1046 (PK J1046E) (P)

COMMENTS: Early maturing sire with breed leading data.

Sire of Lots 45, 46, 47, 49, 52, 64 and 70.



~ Unjoined Heifers ~

We have assembled a special group of heifers ready to join.

Starting off with two very eye appealing red Pheonix daughters, then the complete drop again from the half of the Waterford herd that Glenlea purchased.

We had mostly bull calves from the Waterford cows but these 8 heifers have performed extremely well post weaning and while a late decision to offer these heifers in this sale we are proud to offer the group under the Glenlea brand.

LOT
62

GLENLEA

LADY PHEONIX T334 (P) (R/F)

TATTOO: GLE 22T334E

DOB: 07/08/2022

GLENLEA JUST RED (GLE J5E) (P)
SIRE: GLENLEA PHEONIX (GLE P41E) (P)
 VALLEY VIEW ESTELLA 416 (VLW H26E) (P)
 CLARINDA DOUBLE (KEN F7E) (P)
DAM: GLENLEA GC DC 2ND (GLE M219E) (P)
 VALLEY VIEW GC DC (VLW G44E) (P)



COMMENTS: We selected T334 and T343 and lot 43 as the best of our red Pheonix heifers from 2022. Growth, softness, doability, amazing data, genetics and phenotype. We have said it many times in this catalogue. **T334 is faultless!** DNA testing results pending.

October 2023 Australasian Charolais BREEDPLAN Analysis

| | CE Dir | GL | BW | 200 | 400 | 600 | Milk | SS | Carc Wt | EMA | Rump | IMF |
|-----|--------|------|------|-----|-----|-----|------|------|---------|------|------|------|
| EBV | -2.4 | -3.5 | +1.0 | +17 | +38 | +52 | +11 | +0.6 | +29 | +1.8 | +0.9 | +0.6 |
| Acc | 33% | 41% | 49% | 42% | 44% | 43% | 31% | 45% | 37% | 32% | 35% | 32% |

Offered
Unjoined

LOT
63

GLENLEA

LADY PHEONIX T343 (P) (R/F)

TATTOO: GLE 22T343B

DOB: 22/08/2022

GLENLEA JUST RED (GLE J5E) (P)
SIRE: GLENLEA PHEONIX (GLE P41E) (P)
 VALLEY VIEW ESTELLA 416 (VLW H26E) (P)
 JC LANNISTER L1 (CJC L1E) (P)
DAM: GLENLEA BRAY 1ST (GLE P208A) (P)
 GLENLEA L101 (GLE L101)



COMMENTS: Same stunning phenotype at Lot 62, fine hair, carcass, finish, strong polled head. **A great pair they would be at home in anyone's paddock!** DNA testing results pending.

October 2023 Australasian Charolais BREEDPLAN Analysis

| | CE Dir | GL | BW | 200 | 400 | 600 | Milk | SS | Carc Wt | EMA | Rump | IMF |
|-----|--------|------|------|-----|-----|-----|------|------|---------|------|------|------|
| EBV | -3.3 | -3.6 | +1.1 | +19 | +40 | +53 | +10 | +1.7 | +31 | +1.8 | +1.4 | +0.5 |
| Acc | 32% | 47% | 50% | 43% | 45% | 45% | 34% | 46% | 38% | 33% | 38% | 33% |

Offered
Unjoined

LOT
64

GLENLEA
PETUNIA 1ST (AI) (P)

TATTOO: GLE 22T955E
DOB: 02/09/2022

PALGROVE JUBILEE (PK J395E) (P)
SIRE: PALGROVE MODERATOR (PK M544E) (P)
 PALGROVE FELICITY J1046 (PK J1046E) (P)
 PALGROVE HALLMARK (PK H535E) (P)
DAM: WATERFORD PETUNIA P28E (WET P28E) (P)
 WATERFORD FLORENCE NIGHTINGALE (WET F26E) (P)



COMMENTS: These Moderator females are great types, carcass, yield, great data, strong polled heads and finish - **they will breed some great bulls that top sales!** Dam is from a great cow family. Double Polled.

October 2023 Australasian Charolais BREEDPLAN Analysis

| | CE Dir | GL | BW | 200 | 400 | 600 | Milk | SS | Carc Wt | EMA | Rump | IMF |
|-----|--------|------|------|-----|-----|-----|------|------|---------|------|------|------|
| EBV | +0.7 | -2.8 | +0.6 | +16 | +33 | +43 | +5 | +1.3 | +31 | +2.6 | +0.5 | -0.3 |
| Acc | 38% | 73% | 55% | 49% | 51% | 52% | 40% | 52% | 45% | 39% | 43% | 39% |

Offered
Unjoined

LOT
65

GLENLEA
REDHEAD 1ST (AI) (P) (R/F)

TATTOO: GLE 22T981E
DOB: 05/10/2022

CEDARDALE ZEAL 125Z (OAC H5134E) (P)
SIRE: LIBERTY PANCHALI (Y1K P76E) (P)
 LIBERTY HAPPY GO LUCKY (Y1K H3E) (P)
 WATERFORD PREACHER MAN P38E (WET P38E) (P)
DAM: WATERFORD REDHEAD R25E (WET R25E) (P)
 WATERFORD BEATRIX P128E (WET P128E) (P)



COMMENTS: This heifer has always caught my eye, frame, length, carcass and finish. Dam is a great performing 1st calver, sire an outcross from W.A. **She would look so good as a pen of 3 with lot 62 and 63!** Double Polled.

October 2023 Australasian Charolais BREEDPLAN Analysis

| | CE Dir | GL | BW | 200 | 400 | 600 | Milk | SS | Carc Wt | EMA | Rump | IMF |
|-----|--------|------|------|-----|-----|-----|------|------|---------|------|------|------|
| EBV | -0.3 | -0.3 | +0.5 | +15 | +25 | +35 | +7 | +1.1 | +19 | +0.9 | +1.4 | +0.1 |
| Acc | 38% | 70% | 57% | 47% | 47% | 48% | 39% | 39% | 40% | 34% | 39% | 34% |

Offered
Unjoined

LOT
66

GLENLEA
NOISETTE (AI) (P/S)

TATTOO: GLE 22T926E
DOB: 31/08/2022

PALGROVE LANDMARK (PK L169E) (P)
SIRE: PALGROVE POUNDMAKER P2046E (PK P2046E) (P)
 PALGROVE PANACHE 318 (PK H986E)
 WATERFORD MAGIC SPUR M22E (WET M22E) (P)
DAM: WATERFORD NOISETTE Q18E (WET Q18E) (P)
 WATERFORD NOISETTE N74E (WET N74E) (P)



COMMENTS: A Poundmaker heifer that has bred so well for Liberty Charolais in W.A. Thick, soft, easy doing and growth! Dam's cow family traces to one of Airlie Charolais champion cows. Great data. Double Polled

October 2023 Australasian Charolais BREEDPLAN Analysis

| | CE Dir | GL | BW | 200 | 400 | 600 | Milk | SS | Carc Wt | EMA | Rump | IMF |
|-----|--------|------|------|-----|-----|-----|------|------|---------|------|------|------|
| EBV | +7.8 | -4.2 | -0.7 | +10 | +20 | +24 | +10 | +0.6 | +17 | +1.9 | +1.3 | +0.4 |
| Acc | 37% | 69% | 56% | 47% | 48% | 47% | 36% | 48% | 41% | 36% | 39% | 35% |

Offered
Unjoined

LOT
67

GLENLEA
ELECTRA 1T (AI) (P)

TATTOO: GLE 22T913E
DOB: 01/09/2022

PALGROVE LANDMARK (PK L169E) (P)
SIRE: PALGROVE POUNDMAKER P2046E (PK P2046E) (P)
PALGROVE PANACHE 318 (PK H986E)
COLINTA LEVI (ISA L5044E) (P)
DAM: WATERFORD PRINCESS ELECTRA P34 (WET P34E) (P)
WATERFORD ELECTRA 2 G174E (WET G174E) (P/S)

COMMENTS: This heifer and previous lot would make a great pair to put into your replacement heifer mob. Type, genetics, data. Very few studs would offer heifers like these, they are the future. Double Polled



| October 2023 Australasian Charolais BREEDPLAN Analysis | | | | | | | | | | | | |
|--|--------|------|------|-----|-----|-----|------|------|---------|------|------|------|
| Charolais | CE Dir | GL | BW | 200 | 400 | 600 | Milk | SS | Carc Wt | EMA | Rump | IMF |
| EBV | +5.1 | -3.6 | +0.3 | +12 | +28 | +37 | +12 | +0.8 | +26 | +2.3 | +0.3 | +0.1 |
| Acc | 37% | 71% | 55% | 48% | 49% | 49% | 38% | 48% | 42% | 36% | 41% | 36% |

Offered
Unjoined

LOT
68

GLENLEA
PERIDOT 1ST (P/S)

TATTOO: GLE 22T908E
DOB: 12/11/2022

TEMANA GOLDEN LOGIE G66E (TJ G66E) (P)
SIRE: MOONGOOL MONOPOLY (DP2 M513E) (P)
MOONGOOL BUNYA VALE 4 (DP2 C155E) (P)
CJC SYMBOL B1067 (OAC K1067E) (P)
DAM: WATERFORD PERIDOT P36E (WET P36E) (P)
WATERFORD CRYSTAL C23 (WET C23E)

COMMENTS: The only young Monopoly heifer in the sale. Dam is class young cow with the DeBruycker genetics from the USA. Carcass, overall yield, finish and fine hair. Her progeny will be sale toppers. Poll/scur.



| October 2023 Australasian Charolais BREEDPLAN Analysis | | | | | | | | | | | | |
|--|--------|------|------|-----|-----|-----|------|------|---------|-----|------|-----|
| Charolais | CE Dir | GL | BW | 200 | 400 | 600 | Milk | SS | Carc Wt | EMA | Rump | IMF |
| EBV | -0.9 | -1.0 | +1.2 | +10 | +21 | +30 | +6 | +0.9 | +17 | | | |
| Acc | 34% | 36% | 49% | 38% | 39% | 42% | 29% | 40% | 33% | | | |

Offered
Unjoined

LOT
69

GLENLEA
BLOSSOM 1ST (P)

TATTOO: GLE 22T9113E
DOB: 20/11/2022

PALGROVE MODERATOR (PK M544E) (P)
SIRE: WATERFORD REAL DEAL R11 (WET R11E) (P)
MINNIE-VALE PRIMROSE M18E (SGS M18E) (P)
ASHWOOD PARK RIO D213 F56E (HAS F56E) (P)
DAM: WATERFORD RAIN BLOSSOM R6 (WET R6E) (P)
WATERFORD LADY GINA N36E (WET N36E) (P)

COMMENTS: Early maturing, thick bodied double polled, the first by Real Deal and an example of what to expect from his progeny. Dam is by trait leading sire for Low BW and fat cover TOL D213E. Double polled and extra softness.



| Mid Parent EBVs October 2023 | | | | | | | | | | | | |
|------------------------------|--------|------|------|-----|-----|-----|------|------|---------|------|------|------|
| Charolais | CE Dir | GL | BW | 200 | 400 | 600 | Milk | SS | Carc Wt | EMA | Rump | IMF |
| EBV | +6.3 | -2.2 | -0.4 | +13 | +27 | +38 | +12 | +1.0 | +22 | +1.6 | +1.0 | +0.1 |

Offered
Unjoined

LOT
70

GLENLEA
EIGHTENN KARAT 3RD (AI) (P)

TATTOO: GLE 22T961E
DOB: 30/08/2022

PALGROVE JUBILEE (PK J395E) (P)
SIRE: PALGROVE MODERATOR (PK M544E) (P)
PALGROVE FELICITY J1046 (PK J1046E) (P)
MOONGOOL MONOPOLY (DP2 M513E) (P)
DAM: WATERFORD QUEEN EIGHTEEN KARAT (WET Q42E) (P)
PALGROVE EIGHTEEN KARAT 62 (PK H843E)



COMMENTS: All class, type, data, genetics. Nationally recognized cow family that held the record priced bull sold at auction in Australia for 17 years at \$72,000! Just a lovely type that any stud would be proud to have in the herd.

October 2023 Australasian Charolais BREEDPLAN Analysis

| | CE Dir | GL | BW | 200 | 400 | 600 | Milk | SS | Carc Wt | EMA | Rump | IMF |
|-----|--------|------|------|-----|-----|-----|------|------|---------|------|------|------|
| EBV | +1.5 | -1.3 | +1.2 | +17 | +35 | +52 | +6 | +1.2 | +33 | +2.7 | -0.3 | -0.2 |
| Acc | 33% | 49% | 52% | 46% | 48% | 49% | 34% | 49% | 41% | 35% | 38% | 35% |

Offered
Unjoined

LOT
71

GLENLEA
EMPRESS 1ST (AI)

TATTOO: GLE 22T935E
DOB: 28/09/2022

PALGROVE LANDMARK (PK L169E) (P)
SIRE: PALGROVE POUNDMAKER P2046E (PK P2046E) (P)
PALGROVE PANACHE 318 (PK H986E)
GAUGUIN (OAF L859F)
DAM: WATERFORD EMPRESS K31E (WET K31E)
ROSEDALE EMPRESS A113 (MR A113E)



COMMENTS: Early maturing, moderate framed heifer, good doing thick bodied type that will pull through the dry times with ease. Dam is a big volumed with great carcass and this heifer's data backs all that up!

October 2023 Australasian Charolais BREEDPLAN Analysis

| | CE Dir | GL | BW | 200 | 400 | 600 | Milk | SS | Carc Wt | EMA | Rump | IMF |
|-----|--------|------|------|-----|-----|-----|------|------|---------|------|------|------|
| EBV | +4.9 | -3.0 | +0.4 | +14 | +28 | +29 | +9 | -0.1 | +20 | +2.4 | -0.2 | +0.3 |
| Acc | 43% | 71% | 59% | 53% | 54% | 54% | 43% | 52% | 48% | 42% | 47% | 42% |

Offered
Unjoined

LOT
72

TAYLOR GLENLEA
FESTOON 1ST (AI) (R/F)

TATTOO: TC3 22T22E
DOB: 04/10/2022

SPARROWS BRAXTON 519C (OAC L7500E) (P)
SIRE: MILFORD BRAXTON (JOH Q7E) (ET) (P/S)
SILVERSTREAM LOTUS E96 (OAN E96E) (H)
CHARNELLE PANAMA (GKA P25E) (AI) (P) (TW)
DAM: CHARNELLE FESTOON 16 (GKA R41E) (AI) (P) (R/F)
CHARNELLE FESTOON 5 (GKA H58E) (P/S) (R/F)



COMMENTS: Long bodied, fine coated, will grow into big strong cow. Dam was purchased for \$9000 in 2022 at Charnelle sale as a feature heifer and is from a nationally known cow family. Sire is a fully imported embryo from NZ, Low BW and big Carcass. DNA verified to sire and dam.

October 2023 Australasian Charolais BREEDPLAN Analysis

| | CE Dir | GL | BW | 200 | 400 | 600 | Milk | SS | Carc Wt | EMA | Rump | IMF |
|-----|--------|------|------|-----|-----|-----|------|------|---------|------|------|------|
| EBV | +9.0 | -4.0 | -0.8 | +5 | +19 | +28 | +7 | +1.8 | +19 | +1.1 | +0.2 | -0.4 |
| Acc | 36% | 63% | 61% | 56% | 51% | 51% | 39% | 40% | 40% | 28% | 32% | 27% |

Offered
Unjoined

BUYERS INSTRUCTION SLIP

**Glenlea Beef
Female Sale**

Friday 8th December 2023



Please email completed form to:
Andrew Summerville, Ray White Casino
E: livestock.casino@raywhite.com
P: 0429 620 362

Name: _____

Address: _____

_____ PIC No: _____

Email: _____

Phone: _____ Mobile: _____

Account To: _____

Lot No's Purchased: _____ Total Number of Lots: _____

Society registration transfer Required? Yes No Society / Tattoo Prefix: _____

Transport arrangements. Please give details:

Name of Carrier: _____ Phone: _____

Destination: _____

Insurance Required: _____

Other Instructions: _____

Agent Name and Contact: _____

Buyers Signature: _____ Date: _____ / _____ / _____

Verbal instructions will not be accepted

Return on Investment in Glenlea Females

Sales results for Calves at foot purchased at our female sales in 2021 and sold in 2022/23. There are many more than these highlighted here, space doesn't allow us to detail them all. These results highlight the returns achieved from purchasing Glenlea females and the commitment from Glenlea Beef to providing sales opportunities for purchasers' of our stud females and their progeny!
Your purchase is just the start of our relationship!



Glenlea Kenworth R82 (PP) Sold for \$20,000 at our 2022 Clermont Bull Sale. He was purchased as a calf at foot with his mother at our 2021 Dawn of the Decade female sale for \$6,000 by Grant Taylor, Taylor Charolais, Nowra NSW.



Glenlea Charol 135th (P) equal top priced heifer at our 2022 Casino Female Sale, sold for \$15,000. She was purchased from our 2021 Dawn of the Decade Sale as calf at foot with her dam for \$7,500 by Grant Taylor, Taylor Charolais.



Glenlea JR S6 (P) R/F sold for \$11,500 at our 2023 Winton Bull Sale. He was purchased as a calf at foot with his mother at our 2021 Dawn of the Decade Sale for \$5,000 by Tony and Susie Farrell, Calmview Charolais, Lismore NSW.



Glenlea Honorable P80 S105 (P) R/F sold for \$9,000 at our 2023 Clermont Bull Sale. He was purchased as calf at foot with his dam for \$7000 at our 2021 Scone Female Sale by D & T Melross, Torrie Lodge Charolais, Young NSW.



Glenlea Honorable P80 S103 R/F sold for \$11,000 at our 2023 Clermont Bull Sale. He was purchased as a calf at foot with his mother for \$9,000 at our 2021 Scone Female Sale by Tony and Susie Farrell, Calmview Charolais.



Glenlea Honorable P80 S112 (P) R/F sold for \$10,000 at our 2023 Clermont Bull Sale. He was purchased as a calf at foot with his mother for \$12,000 at our 2021 Scone Female Sale by Tony and Susie Farrell, Calmview Charolais.



LOT 30



LOT 31



LOT 34



LOT 40