



*Elders*

# AG-GROW

ELITE BULL SALE

# 7

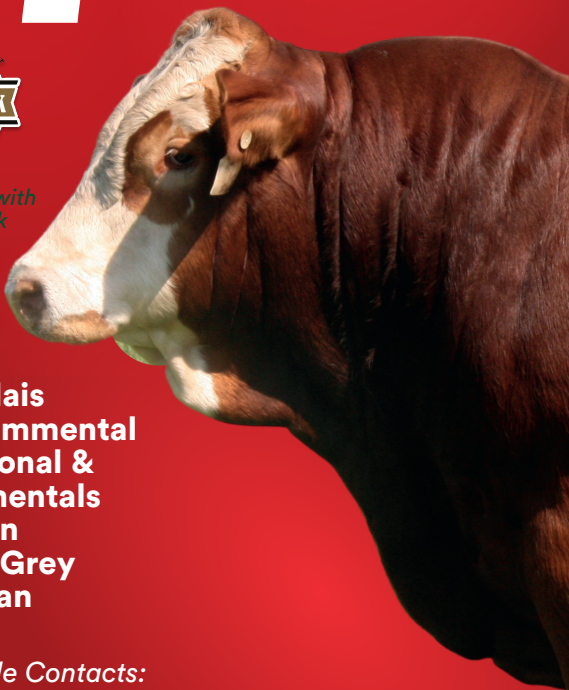
Friday 24th June, 2022 - 10am  
Emerald, Queensland

# 7

# QUALITY BULLS



*Sale interfaced with  
Elite Livestock  
Auctions*



- 9 Angus
- 29 Charolais
- 2 Black Simmental
- 18 Traditional & Red Simmentals
- 2 Limousin
- 7 Murray Grey
- 10 Brahman

VIEW  
Sale Updates  
On Facebook



*Sale Contacts:*

*Anthony Ball 0428 275 499*

*Andrew Meara 0427 210 634*

*Eliza Connors 0419 644 813*

*Don Tucker 0428 841 666*

*Mark Scholes 0409 694 696*

HOW TO REGISTER with

# ELITE LIVESTOCK AUCTIONS



Simply go to [www.elitelivestockauctions.com.au](http://www.elitelivestockauctions.com.au) using your desktop, laptop, iPad, iPhone or android device.



Click on the **"Sign Up"** page / link.



Create a bidding profile using the bidder registration page. *(You can either register as a livestock agent, company or private buyer)*



Agree to the Elite Livestock Auctions terms & Conditions and the Selling Agents Sale Terms & Conditions as printed in the official Sale Catalogue



Click **"Register"**



You will then be notified by email that an account has been created.



Once an account has been created you are all **"Set to Bid"**



Each Auction can then be viewed by clicking **"Live Auction"** logo on the Elite Livestock Auctions website.



Once you receive email notification that your account has been created please go to the sale you wish to bid at and click **"Request to Bid"**



The sale will then approve your application to bid and on the sale catalogue you will see **"√ Bid Request Approved"**



On Sale day simply login, click **"Enter Auction"** on the catalogue page and you can start bidding. *(There is no need for software download)*



At the completion of the auction, invoicing will be carried out as per your registration details by the Selling Agents.

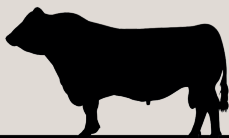
Having trouble registering and logging in?

## 1300 259 742



Elite Livestock Auctions ABN 19604 627 607  
Level 19, 123 Eagle Street, Brisbane, QLD 4000

P : 1300 259 742 F : 07 3041 5053  
[www.elitelivestockauctions.com.au](http://www.elitelivestockauctions.com.au)



*Elders*

# AG-GROW

**ELITE BULL SALE**

Friday 24th June, 2022 - 10am  
Emerald, Queensland

Sale Contacts:

Anthony Ball 0428 275 499  
Andrew Meara 0427 210 634  
Eliza Connors 0419 644 813  
Don Tucker 0428 841 666  
Mark Scholes 0409 694 696

**77**  
**QUALITY**  
**BULLS**

- 9 Angus
- 29 Charolais
- 2 Black Simmental
- 18 Traditional & Red Simmentals
- 2 Limousin
- 7 Murray Grey
- 10 Brahman



PHOTOGRAPHY & SALE  
DETAILS CAN BE FOUND AT:

[facebook.com/  
eldersAGgrowBULLsale](https://facebook.com/eldersAGgrowBULLsale)



**LIVE ONLINE AUCTION**  
**VIEW AND BID FROM YOUR**  
**COMPUTER, TABLET OR**  
**SMARTPHONE.**  
**SEE PAGE 1 FOR DETAILS.**

Elders Stud Stock - QLD Offices

PO Box 395  
Rockhampton  
P. 07 4838 9000

PO Box 7270  
Toowoomba  
P. 07 4636 8888

*Elders*

# Gold Sponsors



# Silver Sponsors



*AN EASY WAY TO SHOP*

***FLY GONE BACK RUBS***



*We would like to thank all our sponsors for their contributions to ensure the success of the Ag-Grow Elite Bull Sale.*





# FOR TRUSTED STUD STOCK SERVICE

Elders Stud Stock are your leading stud sales team with proven experience and professional service to support your business. Speak to our trusted team about your stud stock needs today.

## Contact our Team:

Michael Smith	0428 541 711
Blake Munro	0428 862 469
Andrew Meara	0427 210 634
James Matts	0421 063 501
Anthony Ball	0428 275 499
Mark Scholes	0409 694 696
Randall Spann	0429 700 332
Adam Geddes	0427 500 413
Lisa Hedges	0427 891 367
Eliza Connors	0419 644 813

## Elders Stud Stock - QLD Offices

PO Box 395  
Rockhampton  
P. 07 4838 9000

PO Box 7270  
Toowoomba  
P. 07 4636 8888



*Elders*

# AG-GROW

ELITE BULL SALE

**77** *Friday 24th June, 2022 - 10am  
Emerald, Queensland*

# QUALITY BULLS

## CHAROLAIS

### LOTS 1-29

- 1-3 GLENLEA BEEF
- 4-5 SG & AE PLATZER
- 6-11 CALMVIEW CHAROLAIS
- 12-15 4 WAYS CHAROLAIS
- 16-22 MOUNTVIEW CATTLE CO
- 23 BAUHINIA PARK CHARLOAS
- 24-25 APPLETON CHAROLAIS
- 26-27 PJ CHAROLAIS
- 28-29 ROCKVIEW LODGE CHAROLAIS

## ANGUS

### LOTS 30-38

- 30 CH & CT MCKINLAY
- 31-38 D & N HAYWARD

# **AG-GROW ELITE BULL SALE**

*Friday 24th June, 2022 - 10am  
Emerald, Queensland*

*Contact: Elders Emerald (07) 4986 7500*

## **BLACK SIMMENTALS**

### **LOTS 39-40**

39-40 BIARRA VALLEY CATTLE CO

## **TRADITIONAL & RED SIMMENTALS**

### **LOTS 41-57**

41-44 KEDDSTOCK

45-49 KBV SIMMENTALS

50-55 CANNON DEE SIMMENTAL STUD

56-57 BULLANDO SIMMENTAL STUD

## **LIMOUSIN**

### **LOTS 58-59**

58-59 DI & RY HARTWIG

## **MURRAY GREYS**

### **LOTS 60-67**

60-62 D RASMUSSEN

63-67 GI & KL BUICK

## **BRAHMANS**

### **LOTS 68-77**

68-77 RAGLAN BRAHMANS

# IMPORTANT SALE INFORMATION

**BID CARDS:** The Ag-Grow Elite Bull Sale operates under a bid card system. Prospective bidders are required to register and obtain a bid card prior to the commencement of this sale. Bid cards will be available from the selling agents' office behind the selling box at 7 am on sale morning.

## **PERSONAL PHOTO ID MAY BE REQUIRED**

**HEALTH** Supplementary sheets will be available online and on the day for purchasers to view, listing weight, dentition, scrotal, semen motility, P8, RIB, EMA & IMF. As a requirement of this sale all bulls must be vaccinated for 3-day sickness, blooded with 3-Germ Blood (If from a tick free area) and vaccinated with 5 in 1.

## **TELEPHONE BIDDING**

Telephone bidding will be available on sale day, please contact one of the below Elders agents to organise before the sale.

DON TUCKER 0428 841 666

CREEDON WEIR 0438 776 867

MITCH JACKSON 0458 547 800

ANDREW MEARA 0427 210 634

ANTHONY BALL 0428 275 499

## **GST**

This sale will be conducted on a 'GST exclusive' basis whereby the final bid price on each lot does not include GST. If the lot is [PLUS GST] then GST of 10% will be added to the purchase price of that lot.

If the lot is [NO GST] then no GST will be added to the purchase price of that lot.

**INSURANCE:** Elders recommend that all purchases of Lots in the Ag-Grow Elite Bull Sale are insured. After making significant investments in bulls at this sale, we strongly recommend you insure your purchases. Elders Insurance will be present on sale day to insure your bulls from "Fall of the Hammer" if you have any questions about Insurance pre-sale please don't hesitate to call Trish Depaw from Elders Insurance Emerald on 0499 024 980.

**DELIVERY:** In the interest of all buyers, all instructions covering the delivery of cattle purchased at this sale **MUST** be given in writing and signed by the buyer or their representative. A Buyers instruction sheet is provided for this purpose at the office for buyers to complete while checking off.

---

---

---

---

---

---

---



**Gregory Fabrications**



*Manufacturers of Breckon Cattle Equipment*

**Clermont QLD - Ph. 07 4983 1688**

[www.gregoryfabrications.com.au](http://www.gregoryfabrications.com.au)  
[www.breckon.com.au](http://www.breckon.com.au)



# WOODS STOCKFEEDS



- Custom Loose Licks
- Bull Pellets
- Wagyu Calf Grower Pellets
- Beef Weaner Pellets
- Beef Finisher Pellets
- Horse Loose Lick
- Family Owned Company
- Quality Products
- Bulk Delivery on Farm
- Local Business
- Friendly Service
- Bulk Bags



3 Wills Road - Emerald  
7 Barwon Highway - Goondiwindi

Anthony Moody - 0427 585 325  
Jeff Collingwood - 0436 638 707

Visit us at [www.woodsgroup.com.au](http://www.woodsgroup.com.au)

**CHAROLAIS**  
**1-29**



# GLENLEA BEEF

R BINNY

COFFS HARBOUR, NSW

0409 911 791

# 1

## GLENLEA MUSCLES R19 (P) GLER19E (P)

GLER19E | DOB: 21/03/2020 | AGE: 27 MONTHS

WHITE | POLLED | REGISTERED

LT VENTURE 3198 (P) OAUJ5612E (P)

LT BALLETT 9219 (P) OAUE7686E (P)

## CHALLAMBI MUSCLES (AI) (ET) (P) CHAM15E (P)

PALGROVE EXPO (AI) (ET) (P) PKE132E (P)

ROSEDALE HIGHNESS G114E (P) MRG114E (P)

ROSEDALE HIGHNESS X27 (AI) (P) MRX27E (P)

EC NO DOUBT 2022 P M685500 (P) OAUZ2022E (P)

LITTLE VALLEY GRANDIOSE (AI) (P) GKBG5E (P)

LITTLE VALLEY DOLLY (AI) (P) GKBD5E (P)

## GLENLEA GRETEL 2ND (P) GLEP120E (P)

BRANCH VIEW FORDGED FROM STEEL (AI) (ET) (P) (R/F) BVCF34E (P)

ORARA WATERFALL GRETEL 1ST (P) WFAK24E (P)

JACKSON GRETEL (P) MEJG25E (P)

Early maturing, thick bodied PP Polled, very quiet, great carcass. EBV's result in northern herd index 75% above breed average. His strong maternal traits will add value to his daughters. See videos and photos at [www.glenleabeef.com.au](http://www.glenleabeef.com.au)

Purchaser \_\_\_\_\_

\$ \_\_\_\_\_

# 2

## GLENLEA MUSCLES R606 (P) GLER606A (P)

GLER606A | DOB: 06/04/2020 | AGE: 24 MONTHS

WHITE | POLLED | HERD

LT VENTURE 3198 (P) OAUJ5612E (P)

LT BALLETT 9219 (P) OAUE7686E (P)

## CHALLAMBI MUSCLES (AI) (ET) (P) CHAM15E (P)

PALGROVE EXPO (AI) (ET) (P) PKE132E (P)

ROSEDALE HIGHNESS G114E (P) MRG114E (P)

ROSEDALE HIGHNESS X27 (AI) (P) MRX27E (P)

PURE CHAROLAIS

## GLENLEA P22

PURE CHAROLAIS

Early maturing, thick and soft. Polled and quiet with another good yielding carcass. This bull has above average maternal traits to add value to heifers. EBV's will be available sale day. View photos and videos at [www.glenleabeef.com.au](http://www.glenleabeef.com.au)

Purchaser \_\_\_\_\_

\$ \_\_\_\_\_



# GLENLEA BEEF R BINNY

COFFS HARBOUR, NSW  
0409 911 791

# 3

## GLENLEA NORMAN R303 (P) GLER303E (P)

GLER303E | DOB: 08/04/2020 | AGE: 26 MONTHS  
WHITE | POLLED | REGISTERED

LT WESTERN EDGE 4057 PLD M686616 (P) OAUZ6616E

ASCOT(B)ALAXY G131 (AI) (ET) (P) JAJG131E (P)

ROSDALE BOBBIN Y74 (P) MRY74E (P)

## CHALLAMBI NORMAN (AI) (ET) (P) CHAN13E (P)

HARVIE REDEMPTION 36P MC286641 (P) (R/F) OACZ6641E (P)

GOBONGO ISABELLA D86E (AI) (ET) (P) (R/F) GOD86E (P)

GOBONGO ISABELLA GOT48E (D)

PARINGA NOVOTEL A100 (AI) (ET) (P) TOLA100E (P)

ROSEDALE DINGA (P) MRD25E (P)

ROSEDALE WALLAH Z27 (R/F) MRZ27E (H)

## ORARA WATERFALL GLENLEA GEMMA 1ST (P) WFAK7E (P)

GLENLEA BIG GUN (AI) (P) (R/F) GLEB10E (P)

JACKSON GEMMA (P) MEJG8E (P)

PAJACKSON BRONTE (P) MEJB37E (P)

Early Maturing, thick soft and polled. Like all Glenlea Bulls showing good bone. Great carcass with good finish. EBV's are breed leading with northern herd index nearly double breed average. Very strong maternal traits.

Purchaser \_\_\_\_\_

\$ \_\_\_\_\_



# SG & AE PLATZER

KARRABIN, QLD  
0490 898 342

# 4

## SANLARA PARK SIR REGGIE (AI) (P) SLPS1E (P)

SLPS1E | DOB: 23/01/2021 | AGE: 17 MONTHS  
WHITE | POLLED | REGISTERED

JSC CHAIRMAN 103U IACF6100E (H)

MCC POLLED PHANTOM ET 8853 (P) OAUH8853E (P)

SMR SASHA 3025 (P) OAU-78 (P)

## ZUP THE VEGEMITE KID (AI) (P) 2UPL41E (P)

BCJ PETER PATRIATION 5P IACB6077E (H)

PALGROVE ESTELLA 14 (AI) (ET) PKJ124E (H)

PALGROVE ESTELLA 7 PKE101D (H)

TUNAS ZAC (AI) (ET) NBMZ1504F (D)

MOONGOOL ELITE (P) DP2E213D (P)

MOONGOOL X122C (P) DP2X122C (P)

## 4 WAYS KATRINA K5E (P) 4WCK5E (P)

CHARNELLE CALYPSO (AI) (P) GKAC40E (P)

BETTAFIELD F0031E 6KCF31E (H)

BETTAFIELD C32E 6KCC32E (H)

Smooth-coated, deep sided young bull with an easy quiet temperament. Lovely polled head tested Homozygous polled.

Purchaser \_\_\_\_\_

\$ \_\_\_\_\_



# SG & AE PLATZER

KARRABIN, QLD  
0490 898 342

## 5 SANLARA PARK SAN ANTONIO (AI) SLPS2E (D)

SLPS2E | DOB: 06/02/2021 | AGE: 16 MONTHS  
WHITE | DEHORND | REGISTERED

COBRABALD PICASSO (AI) (P) ASHP82E (P)  
MINNIE VALE SUNDANCE SGSS31E (H)  
MINNIE VALE PEANUT SGSP25E (D)

### MOONGOOL XCALIBUR DP2X205E (H)

PALGROVE GENERATOR (AI) (P) PKG80D (P)  
MOONGOOL NEGLIGE 2 DP2P4E (H)  
PALGROVE NEGLIGE (AI) PKG29F (H)

MARLEGOO X30E (P) LGMX30E (P)  
BETTAFIELD D71E (P) 6KCD71E (P)  
BETTAFIELD 6KCZ18E (H)

### SANLARA PARK NADIA (AI) SLPN3E (H)

MOONGOOL ELITE (P) DP2E213D (P)  
4 WAYS KATRINA K5E (P) 4WCK5E (P)  
BETTAFIELD C32E 6KCC32E (H)

Good carcass and very quiet temperament. Plenty of thickness and depth.

Purchaser \_\_\_\_\_

\$ \_\_\_\_\_.



# CALMVIEW CHAROLAIS

AJ & SJ FARRELL  
FERNLEIGH, NSW  
0417 212 692

## 6 CALMVIEW ROGER R11E (P) CVWR11E (P)

CVWR11E | DOB: 11/04/2020 | AGE: 26 MONTHS  
WHITE | POLLED | REGISTERED

ANC BOUNTY (AI) (ET) (P) ANCB549F (P)  
ANC FONTENAY (P) ANCF77F (P)  
ANC NABIAC'S GLORIA ANCY136F (H)

### ANC KILOWATT (P) ANCK96F (P)

ANC ACCOMPLISH ANCA62F (H)  
TIRRIKE ERINNA RESE21F (D)  
TIRRIKE ALYSSA RESA20F (D)

ABOUKIR OAFE662F (H)  
GAUGUIN O AFL859F (H)  
TOMBOLA OAF-8582F (H)

### SHILOH ITENSE (AI) (ET) (P) SCBJ3E (P)

GUNNADOO SUGAR RAY GN1S202E (D)  
GUNNADOO IRENE Y112E GN1Y112E (D)  
GUNNADOO IRENE T101E (P) GN1T101E (P)

Here is an easy fleshing bull with plenty of thickness, great constitution, length & bone. His progeny will be medium framed, early finishing types. Don't let this opportunity pass you by.

Purchaser \_\_\_\_\_

\$ \_\_\_\_\_.





# CALMVIEW CHAROLAIS

AJ & SJ FARRELL  
FERNLEIGH, NSW  
0417 212 692

## 7

### **CALMVIEW RUSEL R12E (P) CVW12E (P)**

CVWR12E | DOB: 12/04/2020 | AGE: 26 MONTHS  
WHITE | POLLED | REGISTERED

ANC BOUNTY (AI) (ET) (P) ANCB549F (P)  
ANC FONTENAY (P) ANCF77F (P)  
ANC NABIAC'S GLORIA ANCY136F (H)

#### **ANC KILOWATT (P) ANCK96F (P)**

ANC ACCOMPLISH ANCA62F (H)  
TIRRIKE ERINNA RESE21F (D)  
TIRRIKE ALYSSA RESA20F (D)

LT WESTERN SPUR 2061 PLD M645786 (P) OAUX2061E (P)  
MOUNTVIEW EXTREME (AI) (P) IJBE9E (P)  
MOUNTVIEW LUCINDA 10 (AI) (P) IJBC1E (P)

#### **CALMVIEW MAXINE J47E (P) CVWJ47E (P)**

ROSEDALE ARCHIE (P) MRA14E (P)  
CALMVIEW MAXINE (P) CVWG38E (P)  
PALGROVE MAXINE 54 PKY60E (H)

Calmview Rusel R12E is a bull with low birthweight, and positive growth throughout his EBV's. This offers plenty of options, length, muscel & bone, a real meaty bull.

Purchaser

\$

.

## 8

### **CALMVIEW RANDY R17E (P) CVWR17E (P)**

CVWR17E | DOB: 17/04/2020 | AGE: 26 MONTHS  
WHITE | POLLED | REGISTERED

ANC BOUNTY (AI) (ET) (P) ANCB549F (P)  
ANC FONTENAY (P) ANCF77F (P)  
ANC NABIAC'S GLORIA ANCY136F (H)

#### **ANC KILOWATT (P) ANCK96F (P)**

ANC ACCOMPLISH ANCA62F (H)  
TIRRIKE ERINNA RESE21F (D)  
TIRRIKE ALYSSA RESA20F (D)

ICARE OAFN7193F  
GLENLEA BIG GUN (AI) (P) (R/F) GLEB10E (P)  
GLENLEA JANET U6E R/F (P) (TW) GLEU6E (P)

#### **CALMVIEW DIGIT J9E (R/F) CVWJ9E (D)**

SIDELINE YODELL (AI) NLGY63E (H)  
FERNVALE DIGIT FEND16E (D)  
FERNVALE YCEE (AI) (ET) (P/S) FENY33E (S)

White polled Kilowatt son, with great frame and structure. His breeding EBV's suggest strong growth +45 for 600 day weight and +19 for 200 day weight. A commercial cattlemans dream.

Purchaser

\$

.

## 9

### **CALMVIEW ROCKY R21E (P) (R/F) CVWR21E (P)**

CVWR21E | DOB: 08/05/2020 | AGE: 25 MONTHS  
RED | POLLED | REGISTERED

ANC BOUNTY (AI) (ET) (P) ANCB549F (P)  
ANC FONTENAY (P) ANCF77F (P)  
ANC NABIAC'S GLORIA ANCY136F (H)

#### **ANC KILOWATT (P) ANCK96F (P)**

ANC ACCOMPLISH ANCA62F (H)  
TIRRIKE ERINNA RESE21F (D)  
TIRRIKE ALYSSA RESA20F (D)

M6 GRID MAKER 104 PET M633377 (P) OAUW3377E (P)  
PALGROVE HYDRO H8 (AI) (ET) (P) PKH8E (P)  
PALGROVE FESTOON 108 PKW396E (H)

#### **CALMVIEW NOLANA K34E (P) (R/F) CVWK34E (P)**

EC NO DOUBT 2022 P M685500 (P) OAUZ2022E (P)  
GLENLEA NOLANA 44TH (AI) (P) (R/F) GLEE26E (P)  
GLENLEA NOLANA31ST R/F (AI) (ET) (R/F) GLEC20E (H)

This bull is easy to recommend. Red & Polled, this bull is a game changer. Moderate birthweight and strong growth, his frame and structure are both very correct. The choices are endless for what can be achieved with this bull.

Purchaser \_\_\_\_\_ \$ \_\_\_\_\_.

## 10

### **CALMVIEW ROCKETMAN R24E (P) CVWR42E (P)**

CVWR42E | DOB: 01/06/2020 | AGE: 24 MONTHS  
WHITE | POLLED | REGISTERED

LT BLUEGRASS 4017P M686569 (P) OAUZ4017E (P)

LT LEDGER 0332 (P) OAUZ3168E (P)  
LT BRENDA 6120 PLD PED-6992E

#### **PALGROVE MONARCH (AI) (P) PKM628E (P)**

PINAY 8552394134 OAFU4134F (H)  
PALGROVE DESIRE 172 (AI) (ET) PKF724F (H)  
PALGROVE DESIRE 69 (AI) (ET) PKX465F (H)

WCR SIR FA MAC 2244 M234430 (P) OAUB2244E (P)

FERNVALE GOLD DIGGER (AI) (ET) (P) FENG39E (P)  
FERNVALE ANGEL FENA30E (D)

#### **CALMVIEW EVIE M35E (P) CVWM35E (P)**

PALGROVE UPTURN PKU353E (H)  
BALERE STATION EVIE E1 (P) RFSE1E (P)  
JAY TEES ANDROMIDA (AI) (P) JTA9E (P)

The Sire Palgrove Monarch has left his stand here. The proof is he has done it tough, his mother died on day 3. Then bottle reared, look at his ability to adapt & grow. Offering joining options with low birth weight and strong growth.

Purchaser \_\_\_\_\_ \$ \_\_\_\_\_.

# 11

## CALMVIEW RANDY R50E (P) CVWR50E (P)

CVWR50E | DOB: 12/06/2020 | AGE: 24 MONTHS  
WHITE | POLLED | REGISTERED

CS PLD JUNCTION 4J MC228742 (P) OACU8742E (P)

ASCOT ELDORADO (AI) (P) (R/F) JAJE14E (P)

GOBONGO ISABELLA D10E (AI) (P) (R/F) GOD10E (P)

## ASCOT ELDORADO L525 (P) (R/F) JAJL525E (P)

HIGH BLUFF HANK 41R MC297682 (P) OACA7682E (P)

ASCOT F27E (AI) (ET) JAJF27E (H)

MOONGOOL JUDY 2 (P) DP2U39D (P)

LT RIO BRAVO 3181 P M665507 (P) OAU5507E (P)

ASCOT JACK FLASH J105E (AI) (ET) (P) JAJJ105E (P)

GOBONGO JULIETTE B43E (AI) (P) GOB43E (P)

## CALMVIEW ZOE M53E (P) CVWM53E (P)

FERNVALE ZAMBO (AI) (ET) FENZ73F (D)

NARGOON ZOE H020E (AI) (ET) (P) J5YH20E (P)

Purchaser \_\_\_\_\_

\$ \_\_\_\_\_

## IS THE BUFFALO FLY GIVING YOUR CATTLE A HARD TIME?



## FLY GONE BACK RUBS

- ✦ Easy set up ✦ Adjustable flow rate ✦ Holds up to 20L
- ✦ 9 individual wicks @ 1200mm long
- ✦ Set up anyway livestock have access

We are now making trailers and permanent frames to suite the Fly Gone back rubs to fill from the ground

Alan | 0429176181





# 4 WAYS CHAROLAIS

INVERELL, NSW

0428 847 391

## 12

### 4 WAYS MK R16E (P) 4WCR16E (P)

4WCR16E | DOB: 11/05/2020 | AGE: 24 MONTHS  
WHITE | POLLED | HERD

SILVERSTREAM BRUMBY B89 (P) OANB89E (P)

SILVERSTREAM EVOLUTION (P) E168 (P) OANE168E (P)

SILVERSTREAM GLOSSY S120 OANW120E

### MOONGOOL KAKADU (AI) (P) DP2K265E (P)

MOONGOOL SIMON DP2S73E (H)

MOONGOOL RITA 9 (P) DP2B185E (P)

MOONGOOL RITA 2 (P) DP2U53E

TUNAS ZAC (AI) (ET) NBMZ1504F (D)

MOONGOOL ELITE (P) DP2E213D (P)

MOONGOOL X122C (P) DP2X122C (P)

### 4 WAYS N29E (P) 4WCN29E (P)

MOONGOOL ATHOL (P/S) DP2A217E (S)

BETTAFIELD F0023E (P) 6KCF23E (P)

BETTAFIELD 6KCY20E (H)

A Polled son of Kakadu who displays structural soundness, has a thick soft body type that will put plenty of performance into your herd. A Young bull that shows plenty of sire presence, with a strong topline.

Purchaser

\$

.

## 13

### 4 WAYS MK R18E (P) 4WCR18E (P)

4WCR18E | DOB: 13/05/2020 | AGE: 25 MONTHS  
WHITE | POLLED | HERD

SILVERSTREAM BRUMBY B89 (P) OANB89E (P)

SILVERSTREAM EVOLUTION (P) E168 (P) OANE168E (P)

SILVERSTREAM GLOSSY S120 OANW120E

### MOONGOOL KAKADU (AI) (P) DP2K265E (P)

MOONGOOL SIMON DP2S73E (H)

MOONGOOL RITA 9 (P) DP2B185E (P)

MOONGOOL RITA 2 (P) DP2U53E (P)

TR RED SMOKE M723761 (P) (R/F) OAUB6641E (P)

MOONGOOL JAG (AI) (P) (R/F) DP2J159E (P)

MOONGOOL ROSE 12 DP2F131D (H)

### 4 WAYS MJ P12E (P) 4WCP12E (P)

MOONGOOL ATHOL (P/S) DP2A217E (S)

BETTAFIELD F0060E 6KCF60E (H)

BETTAFIELD 6KCB25E

An easy keeping young sire who is deep sided has great fleshing and still retaining plenty of masculinity, his pedigree would be second to none in the 4 Ways herd a real sire not to miss.

Purchaser

\$

.

# 14

## 4 WAYS MK R21E (P) 4WCR21E (P)

4WCR21E | DOB: 25/05/2020 | AGE: 25 MONTHS  
WHITE | POLLED | HERD

SILVERSTREAM BRUMBY B89 (P) OANB89E (P)

SILVERSTREAM EVOLUTION (P) E168 (P) OANE168E (P)

SILVERSTREAM GLOSSY S120 OANW120E

## MOONGOOL KAKADU (AI) (P) DP2K265E (P)

MOONGOOL SIMON DP2S73E (H)

MOONGOOL RITA 9 (P) DP2B185E (P)

MOONGOOL RITA 2 (P) DP2U53E (P)

MOONGOOL WINCHESTER DP2W300E (H)

MOONGOOL BAREFOOT RADLER (P) DP2B352E (P)

WAROCAL V18E (P) RNPV18E (P)

## 4 WAYS YANA G26E (AI) (P) 4WCG26E (P)

TARTHRA VENTURA STORM (AI) (P) CSTV16E (P)

TARTHRA YANA (P) CSTY5E (P)

TARTHRA QUANTUM GOLD (AI) CSTQ26E (D)

This upstanding bull has depth of body is long and soft, is well balanced with a great skin type a well balanced individual that is smoothly made.

Purchaser \_\_\_\_\_

\$ \_\_\_\_\_

# 15

## 4 WAYS MK R20E (P) (R/F)4WCR20E (P)

4WCR20E | DOB: 21/05/2020 | AGE: 25 MONTHS RED  
RED FACTOR | POLLED | HERD

SILVERSTREAM BRUMBY B89 (P) OANB89E (P)

SILVERSTREAM EVOLUTION (P) E168 (P) OANE168E (P)

SILVERSTREAM GLOSSY S120 OANW120E

## MOONGOOL KAKADU (AI) (P) DP2K265E (P)

MOONGOOL SIMON DP2S73E (H)

MOONGOOL RITA 9 (P) DP2B185E (P)

MOONGOOL RITA 2 (P) DP2U53E (P)

TR RED SMOKE M723761 (P) (R/F) OAUB6641E (P)

MOONGOOL JAG (AI) (P) (R/F) DP2J159E (P)

MOONGOOL ROSE 12 DP2F131D (H)

## 4 WAYS MJ HARRIETT N16E (P) 4WCN16E (P)

MOONGOOL XCALIBUR DP2X205E (H)

4 WAYS HARRIETT C46E 4WCC46E (D)

GUNNADOO HARRIET Z77E GN1Z77E (H)

A Polled and red factor young sire that is long with plenty of thickness and finishing ability who stands on moderate bone.

Purchaser \_\_\_\_\_

\$ \_\_\_\_\_



# 16

**MOUNTVIEW RED HOT (AI) (P) (R/F) IJBR7E (P)**  
IJBR7E | DOB: 10/03/2021 | AGE: 27 MONTHS  
RED FACTOR | POLLED | REGISTERED

PALGROVE VIAGRA (AI) (P) PKV92E (P)  
PALGROVE CHARM (AI) (ET) (P) PKC1043E (P)  
PALGROVE FESTOON 88 PKW120E (H)

**PALGROVE HALLMARK (AI) (P) (R/F) PKH535E (P)**

PALGROVE ALYSSA 47 (P) (R/F) PKB835E (P)  
PALGROVE ZEALOUS (AI) (P) (R/F) PKZ129E (P)  
PALGROVE ALYSSA 41 (TW) PKZ259E (H)

ROSEDALE DAVO (P) MRD24E (P)  
CANOONA FLAME PROOF (P) IGVF23E (P)  
CANOONA DIGNA Z31 (P) IGVZ31E (P)

**MOUNTVIEW NERISSA N58E (P) IJBN58E (P)**

LT BLUEGRASS 4017P M686569 (P) OAUZ4017E (P)  
MOUNTVIEW NERISSA F15 (AI) (P) IJBF15E (P)  
MOUNTVIEW NERISSA 2 (AI) (P) IJBD9E (P)

The Name says it all Red & Homozygous Polled. Red Hot has length, thickness and overall capacity. Sire by Palgrove Hallmark who sold for \$44,000. Can view footage at [www.mountviewcharolais.com.au](http://www.mountviewcharolais.com.au)

Purchaser \_\_\_\_\_

\$ \_\_\_\_\_

# 17

**MOUNTVIEW RUGER (AI) (P) IJBR20E (P)**  
IJBR20E | DOB: 19/04/2020 | AGE: 26 MONTHS  
WHITE | POLLED | REGISTERED

PALGROVE VIAGRA (AI) (P) PKV92E (P)  
PALGROVE CHARM (AI) (ET) (P) PKC1043E (P)  
PALGROVE FESTOON 88 PKW120E (H)

**PALGROVE HALLMARK (AI) (P) (R/F) PKH535E (P)**

PALGROVE ZEALOUS (AI) (P) (R/F) PKZ129E (P)  
PALGROVE ALYSSA 47 (P) (R/F) PKB835E (P)  
PALGROVE ALYSSA 41 (TW) PKZ259E (H)

LT ASSERTION 1277 (P) PEDW1277F (P)  
LT BLUEGRASS 4017P M686569 (P) OAUZ4017E (P)  
LT PEARLS BREEZE 2236 (P) PEDX2236F (P)

**MOUNTVIEW LUCINDA F11E (AI) (P) IJBF11E (P)**

PLATINUM ULTRA (P) AJ1U37E (P)  
MOUNTVIEW LUCINDA 12 (AI) IJBD2E (D)  
MOUNTVIEW LUCINDA 5 (AI) IJBY22E (H)

Well put together smooth coated bull with good length. His EBV's suggest he would be suitable for use on heifers. In the top 5% of the breed for calving ease. Can view footage at [www.mountviewcharolais.com.au](http://www.mountviewcharolais.com.au)

Purchaser \_\_\_\_\_

\$ \_\_\_\_\_

# 18

**MOUNTVIEW ROCKFORD (AI) (P) IJBR33E (P)**  
IJBR33E | DOB: 14/07/2020 | AGE: 23 MONTHS  
WHITE | POLLED | REGISTERED

LT UNLIMITED EASE 9108 OAUJ9108E (H)

LT EASY PRO 1158 PLD (P) OAUW6203E (P)  
LT LADY MACBETH 8413 ETP PED-2754E

**WELCOME SWALLOW EASY GAIN F508 (AI) (ET) (P) CMAF508E (P)**  
NWMSU DOC SILVER 362 PLD M669488 (P) OAU9488E (P)  
BJR SILVER MAID 717 ET (P) OAUC8469E (P)  
LT UNLIMITED MAID 7184 P (P) PED-7184E (P)

VIOLET HILLS ZACHARIAH (P) VHVZ80E (P)  
MOUNTVIEW DARWIN (AI) (P) IJBD24E (P)  
NORFOLK PARK X202E CGEX202E (D)

**MOUNTVIEW CLEO (P) IJBH24E (P)**  
CS PLD JUNCTION 4J MC228742 (P) OACU8742E (P)  
MOUNTVIEW LAZY GIRL F5E (AI) (P) IJBF5E (P)  
MOUNTVIEW LAZY GIRL (AI) (P) IJBX5E (P)

Have a look at this soft easy fleshing bull with natural thickness. EBV's Suggest he would be suitable for use on heifers. Can view footage at [www.mountviewcharolais.com.au](http://www.mountviewcharolais.com.au)

Purchaser

\$

.

# 19

**MOUNTVIEW REMINGTON (AI) (P) IJBR36E (P)**  
IJBR36E | DOB: 25/07/2020 | AGE: 23 MONTHS  
WHITE | POLLED | REGISTERED

LT UNLIMITED EASE 9108 OAUJ9108E (H)

LT EASY PRO 1158 PLD (P) OAUW6203E (P)  
LT LADY MACBETH 8413 ETP PED-2754E

**WELCOME SWALLOW EASY GAIN F508 (AI) (ET) (P) CMAF508E (P)**  
NWMSU DOC SILVER 362 PLD M669488 (P) OAU9488E (P)  
BJR SILVER MAID 717 ET (P) OAUC8469E (P)  
LT UNLIMITED MAID 7184 P (P) PED-7184E (P)

CS PLD JUNCTION 4J MC228742 (P) OACU8742E (P)  
ASCOT ELDORADO (AI) (P) (R/F) JAJE14E (P)  
GOBONGO ISABELLA D10E (AI) (P) (R/F) GOD10E (P)

**MOUNTVIEW LYRIC (AI) (P) IJBL5E (P)**  
MOUNTVIEW BIG BEN (AI) (ET) (P) IJBB8E (P)  
MOUNTVIEW ESTER (P) IJBE12E (P)  
NORFOLK PARK HABIT'S NATALIE (P) CGEW119E (P)

A Really impressive Homozygous polled bull with a good topline & extra length. Can view footage at [www.mountviewcharolais.com.au](http://www.mountviewcharolais.com.au)

Purchaser

\$

.



# MOUNTVIEW CATTLE CO

ID & KM BEBBINGTON  
RAMSAY, QLD 0427 583 412

**20** **MOUNTVIEW RIGBY (AI) (P) IJBR38E (P)**  
IJBR38E | DOB: 23/07/2020 | AGE: 23 MONTHS  
WHITE | POLLED | REGISTERED

LT UNLIMITED EASE 9108 OAUJ9108E (H)

LT EASY PRO 1158 PLD (P) OAUW6203E (P)  
LT LADY MACBETH 8413 ETP PED-2754E

**WELCOME SWALLOW EASY GAIN F508 (AI) (ET) (P) CMAF508E (P)**  
NWMSU DOC SILVER 362 PLD M669488 (P) OAU9488E (P)  
BJR SILVER MAID 717 ET (P) OAUC8469E (P)  
LT UNLIMITED MAID 7184 P (P) PED-7184E (P)

SVY PIONEER 402P PED-8416E (D)  
SVY PILGRIM PLD 655S (P) OACB3031E (P)  
HFCC FRENCHKISS 919J PED-9584E

**MOUNTVIEW LUCINDA L13E (AI) (P) IJBL13E (P)**  
LT BLUEGRASS 4017P M686569 (P) OAUZ4017E (P)  
MOUNTVIEW LUCINDA F11E (AI) (P) IJBF11E (P)  
MOUNTVIEW LUCINDA 12 (AI) IJBD2E (D)

Homozygous polled bull who is deep sided and carries natural softness. Has impressive EBV data across the board. Can view footage at [www.mountviewcharolais.com.au](http://www.mountviewcharolais.com.au)

Purchaser

\$

**21** **MOUNTVIEW RICKSHAW (AI) (P) IJBR47E (P)**  
IJBR47E | DOB: 18/09/2020 | AGE: 21 MONTHS  
WHITE | POLLED | REGISTERED

LT UNLIMITED EASE 9108 OAUJ9108E (H)

LT EASY PRO 1158 PLD (P) OAUW6203E (P)  
LT LADY MACBETH 8413 ETP PED-2754E

**WELCOME SWALLOW EASY GAIN F508 (AI) (ET) (P) CMAF508E (P)**  
NWMSU DOC SILVER 362 PLD M669488 (P) OAU9488E (P)  
BJR SILVER MAID 717 ET (P) OAUC8469E (P)  
LT UNLIMITED MAID 7184 P (P) PED-7184E (P)

ROSEDALE DAVO (P) MRD24E (P)  
CANOONA FLAME PROOF (P) IGVF23E (P)  
CANOONA DIGNA Z31 (P) IGVZ31E (P)

**MOUNTVIEW MELODY (P) IJBM11E (P)**  
VIOLET HILLS ZACHARIAH (P) VHVZ80E (P)  
MOUNTVIEW ELEGANT (AI) IJBE34E (H)  
NORFOLK PARK X202E CGEX202E (D)

Another Welcome Shallow Easy Gain son who carries volume & softness. Get behind him to appreciate his hindquarter. Can view footage at [www.mountviewcharolais.com.au](http://www.mountviewcharolais.com.au)

Purchaser

\$



# MOUNTVIEW CATTLE CO

ID & KM BEBBINGTON

RAMSAY, QLD 0427 583 412

## 22

### MOUNTVIEW RAINMAN (AI) (P) IJBR49A (P)

IJBR49A | DOB: 25/09/2020 | AGE: 21 MONTHS  
WHITE | POLLED | REGISTERED

LT UNLIMITED EASE 9108 OAUJ9108E (H)

LT EASY PRO 1158 PLD (P) OAUW6203E (P)  
LT LADY MACBETH 8413 ETP PED-2754E

### WELCOME SWALLOW EASY GAIN F508 (AI) (ET) (P) CMAF508E (P)

NWMSU DOC SILVER 362 PLD M669488 (P) OAU9488E (P)  
BJR SILVER MAID 717 ET (P) OAU8469E (P)  
LT UNLIMITED MAID 7184 P (P) PED-7184E (P)

### MOUNTVIEW K1 IJBK1 (H)

Low birth weight bull with plenty of length. The youngest bull in our draft. EBV's suggest he would be suitable for use on heifers. Can view footage at [www.mountviewcharolais.com.au](http://www.mountviewcharolais.com.au)

Purchaser

\$



# BAUHINIA PARK CHAROLAIS

RW & RJ HOLZWART  
EMERALD, QLD  
0447 313 126

## 23

### BAUHINIA PARK RIPPER (P) BAUR129 (P)

BAUR129 | DOB: 27/07/2020 | AGE: 23 MONTHS  
WHITE | POLLED | HERD

ASCOT ELDORADO (P) (R/F)

### ASCOT ELDORADO L504

ASCOT G62 (P)

FERNVALE FREEDOM (P)

### FERNVALE MAGENTA (P)

FERNVALE GOLD FINGER

Upstanding bull with strong polled genetics on both sides of his pedigree. Clean coated, free moving with plenty of growth and weight for age.

Purchaser

\$



# APPLETON CHAROLAIS

WED & SCE APPLETON, CLERMONT,  
QLD  
0419 184 101

## 24

### APPLETON RAMBO ZWAR59E (D)

ZWAR59E | DOB: 10/01/2020 | AGE: 29 MONTHS  
WHITE | DEHORNED | REGISTERED

PALGROVE ENTERPRISE (P) PKE956E (P)

PALGROVE HEADLINE (P) PKH1417E (P)

PALGROVE DIGNA 127 (AI) (ET) (P) PKC540E (P)

### ASCOT HEADLINE M690E (AI) (ET) JAJM690E (D)

RANGAN PARK RIO BRAVO D10 (AI) (ET) (P) RAND10E (P)

ASCOT ESTELLA F38E (P) JAJF38E (P)

PALGROVE ESTELLA 291 (P) PKD870E (P)

EC NO DOUBT 2022 P M685500 (P) OAUZ2022E (P)

RIVER RUN FOSTER'S LITE (AI) (P) (TW) PLTF3E (P)

RIVER RUN CARAMEL (R/F) PLTC8E (H)

### RIVER RUN JESS PLTJ23E (H)

BANDON XQUISITE (P) 4ARX38E (P)

RIVER RUN BRANDY PLTB5E (H)

MARLEGOO DIGNA 2 (AI) LGMW87E (H)

Purchaser

\$

## 25

### APPLETON RUEBEN ZWAR68E (D)

ZWAR68E | DOB: 23/01/2020 | AGE: 29 MONTHS  
WHITE | DEHORNED | REGISTERED

PALGROVE ENTERPRISE (P) PKE956E (P)

PALGROVE HEADLINE (P) PKH1417E (P)

PALGROVE DIGNA 127 (AI) (ET) (P) PKC540E (P)

### ASCOT HEADLINE M690E (AI) (ET) JAJM690E (D)

RANGAN PARK RIO BRAVO D10 (AI) (ET) (P) RAND10E (P)

ASCOT ESTELLA F38E (P) JAJF38E (P)

PALGROVE ESTELLA 291 (P) PKD870E (P)

SEDALIA ELVIS DFGE8F

### BRAYELLE ANNA NICOLE J8E (P) RDVJ8E (P)

BRAYELLE ANNA NICOLE (P) RDVA20E (P)

Purchaser

\$





# PJ CHAROLAIS

PL & JS DONNELLY  
GLENN INNES, NSW  
0429 673 770

## 26

**PJ RANGO (P) (R/F) PJ1R11E (P)**  
PJ1R10E | DOB: 21/10/2020 | AGE: 20 MONTHS  
RED FACTOR | POLLED | REGISTERED

PALGROVE HERITAGE H135 (P) PKH135E (P)

PALGROVE KAHLUA K458E (P) (R/F) PKK458E (P)  
PALGROVE PANACHE 274 (P) (R/F) PKF1177E (P)

**PJ NITRO (P) PJ1N12E (P)**

MOONGOOL WINCHESTER DP2W300E (H)  
MOONGOOL PARIS 4 (P) DP2B677E (P)  
MOONGOOL PARIS 3 (P) DP2V40E (P)

PALGROVE VIAGRA (AI) (P) PKV92E (P)  
PJ FROSTY (AI) (P) (TW) PJ1F2E (P)  
MOONGOOL PARIS 4 (P) DP2B677E (P)

**PJ MAXINE 4 (P) PJ1K4E (P)**

MOONGOOL DOUBLE UP (P) (R/F) DP2D812D (P)  
PJ MAXINE 3 (P/S) PJ1G1E (S)  
PJ MAXINE (AI) (P) PJ1D2E (P)

Homozygous poll and red factor bull, PJ Maxine 4 a super consistent female, Rango is medium maturity, big scrotal, plenty of depth with balance and constitution.

Purchaser

\$

.

## 27

**PJ RINGO (H) (R/F) PJ1R10E (H)**  
PJ1R10E | DOB: 28/10/2020 | AGE: 20 MONTHS  
RED FACTOR | HORNED | REGISTERED

PALGROVE HERITAGE H135 (P) PKH135E (P)

PALGROVE KAHLUA K458E (P) (R/F) PKK458E (P)  
PALGROVE PANACHE 274 (P) (R/F) PKF1177E (P)

**PJ PRINCE (R/F) PJ1P9E (H)**

EC NO DOUBT 2022 P M685500 (P) OAUZ2022E (P)  
VALLEY VIEW GINA ECND (AI) (ET) (P) VLWH56E (P)  
ADVANCE GINA A124 (AI) (ET) (R/F) ADVA124E (H)

MOONGOOL DERRINGER (R/F) DP2D303E (H)  
PJ JOKER (P) PJ1J6E (P)  
PJ MAXINE (AI) (P) PJ1D2E (P)

**PJ APPEAL 7 (P) PJ1L5E (P)**

MOONGOOL BRIGALOW DP2B562E (H)  
PJ APPEAL 3 (P) PJ1F5E (P)  
IDLEWILD APPEAL 2 (AI) 1J1R62E (H)

A red factor bull with ideal phenotype, plenty of stretch, natural balance and sound as a bell.

Purchaser

\$

.



# ROCKVIEW LODGE CHAROLAIS

M DAWIDOWICZ  
0400 730 741

## 28

**ROCKVIEW LODGE REMINGTON (P) RVWR10C (P)**  
RVWR10C | DOB: 20/09/2020 | AGE: 21 MONTHS  
WHITE | POLLED | HERD

ROCKVIEW LODGE HUNTER

### ROCKVIEW LODGE NUCLEAR WEAPON

PALGROVE ALETTA 23

ROCKVIEW LODGE JAFFA

### ROCKVIEW LODGE HOLLY 2

ROCKVIEW LODGE HOLLY

Remington is a strong-boned polled son of Rockview Lodge Nuclear Weapon with a well-laid in shoulder. A real bullock sire with a medium maturity pattern with a soft outlook.

Purchaser \_\_\_\_\_

\$ \_\_\_\_\_

## 29

**ROCKVIEW LODGE RAYTHEON (P) RVWR6E (P)**  
RVWR6E | DOB: 13/09/2020 | AGE: 21 MONTHS  
WHITE | POLLED | REGISTERED

PALGROVE CHARM (AI) (ET) (P) PKC1043E (P)

PALGROVE HALLMARK (AI) (P) (R/F) PKH535E (P)

PALGROVE ALYSSA 47 (P) (R/F) PKB835E (P)

### ROCKVIEW LODGE NUCLEAR STRIKE (AI) (P) (R/F) RVWN8E (P)

LT CHEYENNE BLEND 7142 P (P) OAUC2067E (P)

ROCKVIEW LODGE ALETTA 1 (AI) (P) (R/F) RVWG5E (P)

PALGROVE ALETTA 23 (P) (R/F) PKD1160E (P)

SILVERSTREAM BRUMBY B89 (P) OANB89E (P)

SILVERSTREAM EVOLUTION E168 (P) OANE168E (P)

SILVERSTREAM GLOSSY S120 OANW120E

### ROCKVIEW LODGE MAXINE 1 (AI) (P) RVWN9E (P)

M6 GRID MAKER 104 PET M633377 (P) OAUW3377E (P)

PALGROVE MAXINE 172 (AI) (ET) (P) PKG157E (P)

PALGROVE MAXINE 48 (P) PKW463E (P)

Raytheon is a low birthweight polled son of Rockview Lodge Nuclear Strike, with a well laid in shoulder, very correct with adequate bone. This bull would suit a range of markets.

Purchaser \_\_\_\_\_

\$ \_\_\_\_\_

# **STRONG, DURABLE AND RELIABLE**

## **Z2 NO TEAR TAGGER**

Unique double action snap back arm and flick out pin

Ergonomic handles allows you to tag the animal's ear either from the front or back

Doesn't damage chip on application

No inserts or extra tools required.



**The Z2 Tagger is design to apply Z Tags NLIS tags and Two Piece Tags.**

Visit your local Retailer today or call 1800 641 324

**ZTAGS.COM**

# ANGUS 30-38

**CH & CT MCKINLAY**  
EMERALD, QLD  
0428 993 332

30

**RDMG AMERICAN CLASSIC Q16**

RDMQ16 | DOB: 30/08/2019 | AGE: 34 MONTHS  
BLACK | REGISTERED

EXAR LUTTON 1831

EXG RS FIRST RATE S903 R3

RAFTER S BLACKCAP P909

**DAMERON C-5 AMERICAN CLASSIC**

DAMERON P V F RAPTOR 702

DAMERON NORTHERN MISS 3114

DAMERON MISS 550

TC FREEDOM 104

GUMBO GULCH CREED 94S

CASSIE OF GUMBO GULCH 58M

**DMM BLACKCAP ESSENCE 7Y**

DMM FUSION 12S

DMM BLACKCAP ESSENCE 46U

DMM BLACKCAP ESSENCE 37N#

Purchaser

\$

**31****GOONDI R14 (P) QDHR14 (P)**QDHR14 | DOB: 01/08/2020 | AGE: 22 MONTHS  
BLACK | POLLED | REGISTEREDBANQUET FORBIDABULL F485<sup>PV</sup>  
BANQUET JUPITER J263SV  
BANQUET DREAM A356#**GLENGOWAN NEMO N78SV**STERN 0768#  
GLENGOWAN RADO G114#  
GLENGOWAN RADO V83#HOFF LIMITED EDITION S C 594#  
RAFF LIMITED EDITION A81SV  
RAFF BURNETTE Y88#**GOONDI LYNETTE G36#**DSK PP SANDY S11#  
GOONDI LYNETTE W10#  
GOONDI LYNETTE K2+90#

Purchaser

\$

.

**32****GOONDI R15 (P) QDHR15 (P)**QDHR15 | DOB: 02/08/2020 | AGE: 22 MONTHS  
BLACK | POLLED | REGISTEREDBANQUET FORBIDABULL F485<sup>PV</sup>  
BANQUET JUPITER J263SV  
BANQUET DREAM A356#**GLENGOWAN NEMO N78SV**STERN 0768#  
GLENGOWAN RADO G114#  
GLENGOWAN RADO V83#  
HOFF LIMITED EDITION S C 594#  
RAFF LIMITED EDITION A81SV  
RAFF BURNETTE Y88#**GOONDI DORIS G38#**HOFF PERFECTION S C 811 3162#  
RAFF DORIS D127#  
RAFF DORIS B205#

Purchaser

\$

.

**33** **GOONDI R19 (P) QDHR19 (P)**  
QDHR15 | DOB: 02/10/2020 | AGE: 20 MONTHS  
BLACK | POLLED | REGISTERED

CONNEALY DANNY BOY#  
RAFF DANNY BOY D207  
HOFF MORIAH S C 635#

**K5X DANNY BOY P21SV**

N BAR 878 NEW DESIGN Z43<sup>PV</sup>  
K5X VANITY FAIR H69#  
K5X VANITY FAIR E48#  
S A V 5175 BANDO 0699#  
WILLUNGA CHAIT C04SV  
NAROOOLA MELODY X61#

**GOONDI DORIS L34#**

BONNY BROOKE YORK Y6<sup>SV</sup>  
GOONDI DORIS C25#  
GOONDI DORIS Y2#

Purchaser

\$

.

**34** **GOONDI R21 (P) QDHR21 (P)**  
QDHR21 | DOB: 11/10/2020 | AGE: 20 MONTHS  
BLACK | POLLED | REGISTERED

CONNEALY DANNY BOY#  
RAFF DANNY BOY D207  
HOFF MORIAH S C 635#

**K5X DANNY BOY P21SV**

N BAR 878 NEW DESIGN Z43<sup>PV</sup>  
K5X VANITY FAIR H69#  
K5X VANITY FAIR E48#  
S A V 5175 BANDO 0699#  
WILLUNGA CHAIT C04SV  
NAROOOLA MELODY X61#

**GOONDI LYNETTE L22#**

RAFF LIMITED EDITION A81<sup>SV</sup>  
GOONDI LYNETTE G36#  
GOONDI LYNETTE W10#

Purchaser

\$

.

## 35 GOONDI R22 (P) QDHR22 (P)

QDHR22 | AGE: 20 MONTHS  
BLACK | POLLED | REGISTERED

CONNEALY DANNY BOY#  
RAFF DANNY BOY D207  
HOFF MORIAH S C 635#

### K5X DANNY BOY P21SV

N BAR 878 NEW DESIGN Z43<sup>PV</sup>  
K5X VANITY FAIR H69#  
K5X VANITY FAIR E48#  
S A V 5175 BANDO 0699#  
WILLUNGA CHAIT C04SV  
NAROOLA MELODY X61#

### GOONDI VANITY FAIR L17#

RAFF LIMITED EDITION A81SV  
GOONDI VANITY FAIR E14#  
GOONDI VANITY FAIR V16#

Purchaser

\$

## 36 GOONDI R23 (P) QDHR23 (P)

QDHR23 | DOB: 15/10/2020 | AGE: 20 MONTHS  
BLACK | POLLED | REGISTERED

CONNEALY DANNY BOY#  
RAFF DANNY BOY D207  
HOFF MORIAH S C 635#

### K5X DANNY BOY P21SV

N BAR 878 NEW DESIGN Z43<sup>PV</sup>  
K5X VANITY FAIR H69#  
K5X VANITY FAIR E48#  
MERRIDALE GOLD LABEL Y157PV  
CHVALLI DESPERADO D11SV  
FORRES BURNETTE W75#

### CHVALLI BURNETTE G2#

KENNY'S CREEK ECLIPSE W111SV  
CHVALLI BURNETTE C2#  
FORRES BURNETTE Y189#

Purchaser

\$





# GOONDI ANGUS

D & N HAYWARD  
FELTON, QLD  
0458 958 158

**37** **GOONDI S5 (P) QDHS5 (P)**  
QDHS5 | DOB: 21/01/2021 | AGE: 17 MONTHS  
BLACK | POLLED | REGISTERED

MILLAH MURRAH CONVERSION L324

**YAMBA PRINCE P169**

YAMBA G0082

WILLUNGA CHAIT C04SV

**GOONDI BURNETTE K24**

CHVALLI BURNETTE G2

Purchaser

\$

**38** **GOONDI S14 (P) QDHS14 (P)**  
QDHS14 | DOB: 15/02/2021 | AGE: 16 MONTHS  
BLACK | POLLED | REGISTERED

MILLAH MURRAH CONVERSION L324

**YAMBA PRINCE P169**

YAMBA G0082

WILLUNGA CHAIT C04SV

**GOONDI VANITY FAIR M53**

GOONDI VANITY FAIR Y15

Purchaser

\$

**BLACK**

**SIMMENTALS**

**39-40**



# BIARRA VALLEY CATTLE CO

ESK, QLD  
0430 719 991

## 39

### BIARRA VALLEY R86 (P) R86 (P)

R86 | DOB: 08/07/2020 | AGE: 23 MONTHS  
BLACK | POLLED | HERD

MR NLC UPGRADE (PP)

### MALA DAKI UPGRADE (PP)

MALA DAKI BLACK HAZEL (PP)

### BIARRA VALLEY BLACK 78

A bull with a tremendous carcass and tropical coat type.

Purchaser \_\_\_\_\_

\$ \_\_\_\_\_.

## 40

### BIARRA VALLEY R87 (P) R87 (P)

R87 | DOB: 14/07/2020 | AGE: 23 MONTHS  
BLACK | POLLED | HERD

MR NLC UPGRADE (PP)

### MALA DAKI UPGRADE (PP)

MALA DAKI BLACK HAZEL (PP)

### BIARRA VALLEY BLACK 79

Check out the extra length and smooth skin type on this fella.

Purchaser \_\_\_\_\_

\$ \_\_\_\_\_.

**TRADITIONAL &  
RED SIMMENTALS  
41-57**



**KEDDSTOCK PTY LTD**

I PRICE  
SURAT, QLD  
0428 265 031

**41**

**MOONGOOL R203 (P) R203 (P)**

R203 | DOB: 20/09/2020 | AGE: 21 MONTHS  
RED | POLLED | HERD

**LUCRANA LARRIKIN (P)**

**GOWRIE N219**

Purchaser \_\_\_\_\_ \$ \_\_\_\_\_.

**42**

**MOONGOOL R201 (P) R201 (P)**

R201 | DOB: 15/09/2020 | AGE: 21 MONTHS  
RED | POLLED | HERD

**LUCRANA LARRIKIN (P)**

**GOWRIE N232**

Purchaser \_\_\_\_\_ \$ \_\_\_\_\_.



**KEDDSTOCK PTY LTD**

I PRICE  
SURAT, QLD  
0428 265 031

**43**

**MOONGOOL R198 (P) R198 (P)**

R198 | DOB: 04/10/2020 | AGE: 22 MONTHS  
RED | POLLED | HERD

**LUCRANA LARRIKIN (P)**

**GOWRIE N212**

**44**

**MOONGOOL R237 (P) R237 (P)**

R237 | DOB: 10/01/2021 | AGE: 17 MONTHS  
RED | POLLED | HERD

**LUCRANA LARRIKIN (P)**

**GOWRIE M373**

Purchaser \_\_\_\_\_ \$ \_\_\_\_\_.



# KBV SIMMENTALS

M ROWLANDS & S LEAN  
DJUAN, QLD  
0439 208 732

**45** **KBV REMINGTON (Pp) (ET) (AI) (R) ZKVPR012 (Pp)**  
ZKVPR012 | DOB: 02/05/2020 | AGE: 25 MONTHS  
RED | POLLED | REGISTERED

CNS DREAM ON L186 (P) (ET) (B)  
REMINGTON RED LABEL HR (P) (ET) (R)  
HS REFLECTIONS J34

**REMINGTON GENERALLEE 106T (P) (R)**

G&L AVALANCHE 149F  
DRAKE SOFT TOUCH 15M  
DRAKE MISS P36D

CHARLES PRIDE (B)  
SV CHARLIES APPLAUSE  
SPRING VALLEY Z402

**BAR 15 MISS KNIGHT78E-51G (P)**

IRISH BLACK KNIGHT (B)  
BAR 15 MISS KNIGHT 83Y-78E  
BAR 15 MISS U 110-83Y

Red Simmental, Heterozygous Polled, DL-Free – DNA Tested.

Purchaser

\$

**46** **KBV RED GENERAL (Pp) (ET) (AI) (R) ZKVPR011 (Pp)**  
ZKVPR011 | DOB: 02/05/2020 | AGE: 25 MONTHS  
RED | POLLED | REGISTERED

CNS DREAM ON L186 (P) (ET) (B)  
REMINGTON RED LABEL HR (P) (ET) (R)  
HS REFLECTIONS J34

**REMINGTON GENERALLEE 106T (P) (R)**

G&L AVALANCHE 149F  
DRAKE SOFT TOUCH 15M  
DRAKE MISS P36D

CHARLES PRIDE (B)  
SV CHARLIES APPLAUSE  
SPRING VALLEY Z402

**BAR 15 MISS KNIGHT78E-51G (P)**

IRISH BLACK KNIGHT (B)  
BAR 15 MISS KNIGHT 83Y-78E  
BAR 15 MISS U 110-83Y

Red Simmental, Heterozygous Polled, Homozygous Red - DNA Tested.

Purchaser

\$





# KBV SIMMENTALS

M ROWLANDS & S LEAN  
DJUAN, QLD

0439 208 732

## 47

### KBV RONALD (PP) ZKVPR016 (PP)

ZKVPR016 | DOB: 07/06/2020 | AGE: 24 MONTHS  
RED | POLLED | REGISTERED

TNT BOOTLEGGER Z268 (PP) (R)  
MRL RED WHISKEY 101B (P) (R)  
MRL MISS 677Y

### K.B.V. NORBERT (Pp) (AI)

SYLVANDALE RED J025 (P)  
K.B.V. LUNA (P)  
K.B.V. HEDVIG (H)

CIRCLE T ANTOINETTES STAR (P) (ET) (B)  
ST PAULS GALAXY G439 (P) (ET) (AI) (B)  
ST PAULS RO PEAR D271 (P) (ET) (AI) (B)

### SYLVANDALE GWEN L230 (P) (B)

LANCASTER AJAX (P) (ET) (AI) (B)  
SYLVANDALE GWEN F536 (P) (B)  
BREWERS GWEN C076 (P) (AI) (R)

Red Simmental, Homozygous Polled, Homozygous Red - DNA Tested.

Purchaser

\$

.

## 48

### KBV RED ALERT (PP) ZKVPR020 (PP)

ZKVPR020 | DOB:20/08/2020 | AGE: 22 MONTHS  
RED | POLLED | REGISTERED

THSF FREEDOM 300N (P) (ET) (R)  
KNK/CRSR RED BULL 53T (P)  
JDJ MISS MACHO 53P

### K.B.V. MIDNIGHT MARAUDER (PP) (ET) (AI)

KS RED BY DESIGN N968  
CROSSROAD SIERRA 524S (P)  
CROSSROAD LACOSTA 136L

DORSIM MASSIE  
BAR 5 SA STIMULATION 415P (H)  
TOVERBERG ERIKA

### K.B.V. LUCKY STAR (P) (AI)

WOONALLEE DIMENSION (P) (AI)  
K.B.V. GENIE (P)  
WOONALLEE LADY SUZI B53 (H) (AI)

Red Simmental, Homozygous Polled, Homozygous Red - DNA Tested.

Purchaser

\$

.



# KBV SIMMENTALS

M ROWLANDS & S LEAN  
DJUAN, QLD

0439 208 732

# 49

## KBV RICOCHET (S) ZKVPR021 (S)

ZKVPR021 | DOB:02/09/2020 | AGE: 21 MONTHS  
RED | SCURRED | REGISTERED

THSF FREEDOM 300N (P) (ET) (R)

KNK/CRSR RED BULL 53T (P)

JDJ MISS MACHO 53P

## K.B.V. MIDNIGHT MARAUDER (PP) (ET) (AI)

KS RED BY DESIGN N968

CROSSROAD SIERRA 524S (P)

CROSSROAD LACOSTA 136L

BREWERS BANDIT S117 (P)

BREWERS BANDIT X340 (P)

BREWERS GWEN V186 (P)

## K.B.V. JOAN (P)

BREWERS BANDIT S117 (P)

BREWERS HEIDI V193 (P)

BREWERS HEIDI T141 (H)

Red Simmental, Scurred, Homozygous Red - DNA Tested.

Purchaser

\$



# CANNON DEE SIMMENTAL STUD

KW PERKINS & TL CROUCH  
CHINCHILLA, QLD, 0488 732 794

# 50

## CANNON DEE QUINN PQ109 (P) KNTQP119 (P)

KNTQP119 | DOB:28/12/2019 | AGE: 30 MONTHS  
BLONDE | POLLED | REGISTERED

BILLA PARK POLL CHURCHILL (P)

BILLA PARK HIGH IMPACT H186 (P)

BILLA PARK XCEED

## BILLA PARK MAYOR M179 (P)

WOONALLEE ZUES Z100 (H) (AI)

BILLA PARK CHLOE

BOORANG WYOMING (P)

LANGTON-GATE YACKA (P)

LANGTON-GATE PA009 (P)

LANGTON-GATE X030 (P)

## AUSSIE PARK DELANI (P)

AUSSIE PARK IRON BARK (H) (AI)

AUSSIE PARK APRICOT (H) (TW)

GOLDPARK EARTHA

Very good temperament, with a strong topline.

Purchaser

\$



# CANNON DEE SIMMENTAL STUD

KW PERKINS & TL CROUCH  
CHINCHILLA, QLD, 0488 732 794

# 51

**CANNON DEE QUILPIE PQ108 (H) KNTPQ108 (H)**  
KNTPQ108 | DOB:13/11/2019 | AGE: 31 MONTHS  
RED | HORNED | REGISTERED

CHAMPS ROMANO  
VIRGINIA WALKER 97W  
VIRGINIA MS. NECKLACE 97N

**SIBELLE DIRTY HARRY 25Z (H)**

PRL HOUSTON 005H  
SIBELLE GOLDA  
SIBELLE AZALEE

BREWERS BANDIT X340 (P)  
K.B.V. KING (H)  
BREWERS HEIDI V193 (P)

**CANNON DEE NADIA (H)**

WOONALLEE HEARTACHE (P)  
CANNON DEE LUANNE (P)  
CANNON DEE FLORENCE (H)

Moderate framed bull with good mobility.

Purchaser \_\_\_\_\_

\$ \_\_\_\_\_

\_\_\_\_\_

# 52

**CANNON DEE RAMBO PR136 (P) KNTPR136 (P)**  
KNTPR136 | DOB:16/12/2020 | AGE: 18.5 MONTHS  
RED | POLLED | REGISTERED

YARRAYNE DEAMON (H)  
MELDON PARK HUGO (H)  
MELDON PARK FARAWAY (H)

**MELDON PARK N023**

MELDON PARK ACHILLES (P)  
MELDON PARK D098  
MELDON PARK ACCLAIM (H)

WILLANDRA EXCALIBUR (P)  
WOONALLEE HEARTACHE (P)  
WOONALLEE ROSY C127 (ET) (AI)

**CANNON DEE LILY (P)**

AUSSIE PARK COLONIAL BOY (P)  
CANNON DEE GRACE (P)  
AUSSIE PARK PRINCESS

Traditional Coloured with Frame & Length.

Purchaser \_\_\_\_\_

\$ \_\_\_\_\_

\_\_\_\_\_



# CANNON DEE SIMMENTAL STUD

KW PERKINS & TL CROUCH  
CHINCHILLA, QLD, 0488 732 794

## 53

**CANNON DEE R010 1R010 (P) KNT1R010 (P)**  
KNT1R010 | DOB:20/12/2020 | AGE: 18 MONTHS  
BLONDE | POLLED | REGISTERED

YARRAYNE DEAMON (H)  
MELDON PARK HUGO (H)  
MELDON PARK FARAWAY (H)

**MELDON PARK N023**

MELDON PARK ACHILLES (P)  
MELDON PARK D098  
MELDON PARK ACCLAIM (H)

**CANNON DEE N001 (H)**

Super soft blonde bull with extra depth & width.

Purchaser \_\_\_\_\_

\$ \_\_\_\_\_

.

## 54

**CANNON DEE R011 1R011 (P) KNT1R011 (P)**  
KNT1R011 | DOB:06/01/2020 | AGE: 18 MONTHS  
RED | POLLED | REGISTERED

YARRAYNE DEAMON (H)  
MELDON PARK HUGO (H)  
MELDON PARK FARAWAY (H)

**MELDON PARK N023**

MELDON PARK ACHILLES (P)  
MELDON PARK D098  
MELDON PARK ACCLAIM (H)

**CANNON DEE N004 (Pp)**

Dark Pigmented bull that impresses with his excellent length and muscle pattern.

Purchaser \_\_\_\_\_

\$ \_\_\_\_\_

.



# CANNON DEE SIMMENTAL STUD

KW PERKINS & TL CROUCH  
CHINCHILLA, QLD, 0488 732 794

# 55

**CANNON DEE R008 2R008 (H) KNT2R008 (H)**  
KNT2R008 | DOB:30/12/2020 | AGE: 18 MONTHS  
RED | HORNED | REGISTERED

BILLA PARK POLL CHURCHILL (P)  
BILLA PARK HIGH IMPACT H186 (P)  
BILLA PARK XCEED

**BILLA PARK MAYOR M179 (P)**

WOONALLEE ZUES Z100 (H) (AI)  
BILLA PARK CHLOE  
BOORANG WYOMING (P)  
WILLANDRA EXCALIBUR (P)  
WOON ALLEE HEARTACHE (P)  
WOONALLEE ROSY C127 (ET) (AI)

**CANNON DEE M003 (Pp)**

CANNON DEE H099

Traditional Coloured with Frame & Length.

Purchaser

\$



# BULLANDO SIMMENTALS

C RYAN, RIDDELLS CREEK, VIC  
0427 588 899

# 56

**BULLANDO ROCKET R008 (P) ZXRPR008 (P)**  
ZXRPR008 | DOB:07/12/2021 | AGE: 18 MONTHS  
RED | POLLED | REGISTERED

WHEATLAND CIRCUIT BREAKER (P) (R)  
WHEATLAND KILL SWITCH (P) (R)  
HR/RR MS CANDACE T73

**BULLANDO RUCKER**

SRS RIGHT-ON 22R (P) (B)  
LANCASTER BLANCHE J236 (PP) (ET) (AI) (B)  
LANCASTER BLANCHE (P) (ET) (AI) (B)  
LANCASTER E-TYPE E074 (P) (AI) (R)  
SAVANNAH JON BON JOVI (P) (ET) (AI)  
CORINDADOWNS DHARMA (PP) (ET) (AI) (R)

**SAVANNAH ZOE P047**

DCR MR MOON SHINE X102 (PP)  
SAVANNAH ZOE M02 (PP) (ET) (AI)  
LANCASTER BLANCHE G114 (PP) (ET) (AI) (R)

Purchaser

\$



# BULLANDO SIMMENTALS

C RYAN, RIDDELLS CREEK, VIC  
0427 588 899

# 57

**BULLANDO RULE BREAKER R010 (P) ZXRPR010 (P)**  
ZXRPR010 | DOB:12/12/2021 | AGE: 18 MONTHS  
RED | POLLED | REGISTERED

WHEATLAND CIRCUIT BREAKER (P) (R)  
WHEATLAND KILL SWITCH (P) (R)  
HR/RR MS CANDACE T73

## BULLANDO RUCKER

SRS RIGHT-ON 22R (P) (B)  
LANCASTER BLANCHE J236 (PP) (ET) (AI) (B)  
LANCASTER BLANCHE (P) (ET) (AI) (B)

LANCASTER E-TYPE E074 (P) (AI) (R)  
SAVANNAH JON BON JOVI (P) (ET) (AI)

CORINDADOWNS DHARMA (PP) (ET) (AI) (R)

## SAVANNAH ZOE P047

DCR MR MOON SHINE X102 (PP)  
SAVANNAH ZOE M02 (PP) (ET) (AI)  
LANCASTER BLANCHE G114 (PP) (ET) (AI) (R)

Purchaser \_\_\_\_\_

\$ \_\_\_\_\_

.

58-59  
LIMOUSIN



# GOLD CREST LIMOUSINS

DI & RY HARTWIG, CROWS NEST,  
QLD, 0428 736 470

## 58

**GOLD CREST MSHAKE RECONAISSANCE (P) (PF) SDHPR14 (P)**  
SDHPR14 | DOB:21/04/2020 | AGE: 26 MONTHS  
APRICOT | POLLED | REGISTERED

MANDAYEN EASY RIDER E1360 (P) (B) (PF)  
GRANETA HANGOVER (P) (R) (PF)  
ULSTER DAYNA (PN)

### **GOLD CREST MILKSHAKE (P) (PN) (AA)**

GREENSLOPES FOOLS GOLD (P) (R) (PN)  
GREENSLOPES FIFI K99 (P) (B) (PF)  
GREENSLOPES FIFI (P) (B) (PF)

PREMIER BIRUBI S35 (P) (PN) (AA)  
GREENSLOPES FOOLS GOLD (P) (R) (PN)  
GREENSLOPES DIAMONDS N GOLD (S) (PU)

### **GREENSLOPES FIFI K99 (P) (B) (PF)**

EXLR NATIVE 7133N (HP\*) (HB) (PN) (AC)  
GREENSLOPES FIFI (P) (B) (PF)  
PREMIER MIMI Y48 (P) (B) (PF)

Moderate framed polled bull, smooth skin type with plenty of muscle and softness. Good length and overall great performance package for any herd. Faultless temperament. Fully Vaccinated, ready to work.

Purchaser

\$

.

## 59

**JEN-DAVIEW ROYAL R7 (P) (R) (PU) BCEPR7 (P)**  
BCEPR7 | DOB:23/08/2020 | AGE: 22 MONTHS  
RED | POLLED | REGISTERED

GREENWOOD PLD XTRA CHARGE (HP\*) (PU)  
GREENWOOD PLD ZAMBUKA (2P) (R) (PN) (AC)  
GREENWOOD WISTERIA LANE (HP\*) (B) (PN)

### **JEN-DAVIEW MAJOR JANKS (P) (PU) (AA)**

WULFS XTRACTOR X233X (HP\*) (PN) (AA)  
JEN-DAVIEW POLLED LADY JANKE (P) (PU)  
JEN-DAVIEW FEATURE (PU)

WULFS ZEPHYR X624Z (2P) (R) (PU)  
JYF CHUNK 35C (HP\*) (R) (PN) (AA)  
TMF MISS 186W (P) (B) (PU)

### **JEN-DAVIEW PRINCESS (2P) (PF)**

WULFS UPPERMOST 6196U (HP\*) (B) (PN) (AC)  
OSULLIVANS GEM K24 (2P) (PF)  
BURNSTEAD ZIMI (HP\*) (B) (PN)

Soft easy doing young sire, with depth of body and smooth muscle pattern. A bull that will add carcass and finishing ability to his progeny. Fully vaccinated and ready to work.

Purchaser

\$

.



**MURRAY GREY**

**60-67**



# DM RASMUSSEN & MM HANSEN

KINGAROY, QLD  
0428 716 109

## 60

### SHELL-DEE IRONMAN

SHDR13 | DOB:11/10/2020 | AGE: 20 MONTHS  
SILVER | POLLED | HERD

MONTEREY KOSCIUSZKO K101

### SHELL-DEE IRONJACK

MONTEREY BOUQUET D188

MONTEREY MR COOL

### SHELL-DEE TRINKET J52

SHELL-DEE PRINCESS JEWEL

Purchaser \_\_\_\_\_ \$ \_\_\_\_\_ .

## 61

### SHELL-DEE THUNDERSTORM

SHDR10 | DOB:29/09/2020 | AGE: 20 MONTHS  
GREY | POLLED | HERD

SHELL-DEE FEDERATION

### SHELL-DEE ROLLING THUNDER

WINDHAVEN EDEN

LERWICK PARK BUCKLEY

### LERWICK PARK GWENDA F70

LERWICK PARK GWENDA A44

Purchaser \_\_\_\_\_ \$ \_\_\_\_\_ .



# DM RASMUSSEN & MM HANSEN

KINGAROY, QLD  
0428 716 109

## 62

### SHELL-DEE THUNDERSTRUCK

D6MR29 | DOB:14/11/2020 | AGE: 19 MONTHS  
GREY | POLLED | HERD

SHELL-DEE FEDERATION

#### SHELL-DEE ROLLING THUNDER

WINDHAVEN EDEN

MONTEREY MR COOL

#### SHELL-DEE GLITTER

SHELL-DEE PRINCESS JEWEL

Purchaser

\$



# GI & KL BUICK

WESTERN FLAT, SA  
0438 582 071

## 63

### ARKI RUCKMAN R51 (P) RIBR51 (P)

RIBR51 | DOB:07/06/2020 | AGE: 24.5 MONTHS  
SILVER | POLLED | REGISTERED

WATTYVALE JUMANE J2 (PB) (AI)

WATTYVALE KAYLEM (PB)

WATTYVALE BRIDGET (PB)

#### WATTYVALE NITRO CIRCUS N4 (PB)

TARLINA COOMUNGA C57 (PB)

WATTYVALE HANNA K6 (PB)

WATTYVALE HANNA H3 (PB)

THE GLEN BASS F226 (GR1)

ROGIALYN HOFFMAN (GR2)

ROGIALYN BETTY C2 (PB) (AI) (ET)

#### ARKI EASTERS NIGHT M21 (PB)

WINDHAVEN CASH FLOW (PB)

WINDHAVEN EASTER NIGHT (PB)

WINDHAVEN WINTER WONDERLAND (PB)

Arki Ruckman R51 is a long, smooth bull with good carcass profile, ample softness and great outlook. Medium birth weight figure with above breed average for all growth traits. PI test negative, Vaccinated with 7 in 1, Vibro, 3 Germ blood and 3 day sickness.

Purchaser

\$

64

**ARKI ROYALTY R57 (PB) RIBR57 (P)**  
RIBR57 | DOB:24/08/2020 | AGE: 22 MONTHS  
SILVER | POLLED | REGISTERED

ARKI EDWARD E38 (PB)  
ARKI JUDGEMENT J99 (PB)  
WINDHAVEN CHLOE (PB)

**ARKI NEVER IN DOUBT N44 (PB) (AI)**

MURFIELD XPLOER X4 (PB)  
ARKI TREASURE F59 (PB)  
WINDHAVEN TREASURE (PB)

BIG RIVER FRED BASSETT (PB)  
ALLARA PARK HORIZON (PB)

BRAESIDE PARK ENLIGHTEN (PB)

**ARKI DIXIE L2 (PB)**

TARLINA EARL E28 (PB)  
BALLYVAUGHAN DIXIE J15 (PB)  
BALLYVAUGHAN DIXIE Z11 (PB)

Arki Royalty R57 is a large framed, strong boned bull with outstanding weight for age. PI Tested Negative, vaccinated with 7 in 1, vibro, 3 germ blood and 3 day sickness.

Purchaser

\$

.

65

**ARKI REAL POWER R42 (PB) RIBR42 (P)**  
RIBR42 | DOB:02/05/2020 | AGE: 25 ¾ MONTHS  
SILVER | POLLED | REGISTERED

WATTYVALE JUMANE J2 (PB) (AI)  
WATTYVALE KAYLEM (PB)  
WATTYVALE BRIDGET (PB)

**WATTYVALE NITRO CIRCUS N4 (PB)**

TARLINA COOMUNGA C57 (PB)  
WATTYVALE HANNA K6 (PB)  
WATTYVALE HANNA H3 (PB)

ARKI BUSTER B35 (PB) (AI)  
ARKI GIBBO G2 (PB)

ARKI YASMINE E25 (PB)

**ARKI PEGGY-SUE L75 (PB)**

EYLWARRA SANDS ZONE Z72 (PB) (AI)  
ARKI PEGGY-SUE C16 (PB) (AI)  
ARKI PEGGY-SUE X36 (PB)

Arki Real Power R42 is a deep bodied, smooth bull with a strong top line and good butt profile. PI Tested Negative, vaccinated with 7 in 1, Vibro, 3 germ blood and 3 day sickness.

Purchaser

\$

.

## 66

**ARKI RAPID BAY R61 (PB) RIBR61 (P)**  
RIBR61 | DOB:27/08/2020 | AGE: 22 MONTHS  
SILVER | POLLED | REGISTERED

ARKI EDWARD E38 (PB)  
ARKI JUDGEMENT J99 (PB)  
WINDHAVEN CHLOE (PB)

**ARKI NEVER IN DOUBT N44 (PB) (AI)**

MURFIELD XPLOER X4 (PB)  
ARKI TREASURE F59 (PB)  
WINDHAVEN TREASURE (PB)

ARKI BUSTER B35 (PB) (AI)  
ARKI GIBBO G2 (PB)

ARKI YASMINE E25 (PB)

**ARKI BROOKE K77 (PB)**

ARKI X-CEED (PB)  
ARKI BROOKE B53 (PB)  
MYANGA W136 (PB)

Arki Rapid Bay R61 is a long, smooth bull with good depth of body and ample softness. PI Tested negative and vaccinated with 7 in 1, Vibro, 3 Germ blood and 3 day sickness.

Purchaser \_\_\_\_\_ \$ \_\_\_\_\_ .

## 67

**ARKI RAMBO R60 (PB) RIBR60 (P)**  
RIBR60 | DOB:25/08/2020 | AGE: 22 MONTHS  
GREY | POLLED | REGISTERED

NAWARRA BANANA BENDER (PB)  
WOODBOURN LARRY L9 (PB)  
WOODBOURN MISS CARRIE Z85 (PB)

**WAROONA LARRY P30 (PB)**

WOODBOURN FRANCE F48 (PB)  
WAROONA PEARL K26 (PB)  
WAROONA PEARL C27 (PB)

WATERMILL WYSTICAL (PB)  
WATERMILL ZORRO (PB)  
WATERMILL SUZIE-Q X17 (PB)

**ARKI YINA G90 (PB)**

BOXVALE ULTRA STAR (PB)  
WINDHAVEN YINA (PB)  
WINDHAVEN TOE TAPPER (PB)

Arki RAMBO R60 is a long, smooth bull with softness, low birth weight figure around breed average, with positive fats. PI Tested negative and vaccinated with 7 in 1, Vibro, 3 germ blood and 3 day sickness.

Purchaser \_\_\_\_\_ \$ \_\_\_\_\_ .

**BRAHMAN**

**68-77**



# RAGLAN BRAHMANNS

A & R OLIVE  
RAGLAN, QLD  
0409 346 542

## 68

### RAGLAN LARRY (H) RAG3788M (H)

RAG3788M | DOB:09/03/2020 | AGE: 27 MONTHS  
GREY | HORNED | REGISTERED

MR V8 900/4 (ET) (H)

BNA BAR MANSO 387/7 LEXINGTON (IMP US) (H)

BNA MISS NEL MANSO 288/2

### RAGLAN LOXTON 2196 (IVF) (H)

JDH MADISON MAN MANSO (IMP US) (H)

SPRING VALLEY 564 MS TEGAN (ET) (H)

BRAHROCK MISS EMPRESS 1412 (ET) (H)

FBC WENDELL MANSO (ET) (H)

ABBOTSFORD WESLEY (ET) (H)

ABBOTSFORD CLOTIDE 2143 (ET) (H)

### RAGLAN MISS 2031 (H)

TARTRUS MAXIMUS 004179 (ET) (H)

RAGLAN MISS ELICIA 369 (H)

APIS CREEK KATINE (H)

Purchaser

\$

.

## 69

### RAGLAN MR WELLO (H) RAG3746M (H)

RAG3746M | DOB:08/01/2020 | AGE: 29 MONTHS  
GREY | HORNED | REGISTERED

FBC D MR ARNIE MANSO (H)

FBC GARTH MANSO 537/1 (H)

FBC D MISS JESS DE MANSO 934D (H)

### FBC T WARRIOR MANSO 078T (H)

JDH NIETO DE MANSO 646/3 (IMP US) (ET)

FBC T MISS JESS DE MANSO 026T (IVF) (H)

FBC D MISS JESS DE MANSO 545DF (H)

PBF RUTHERFORD MANSO 28/8 (H)

RAGLAN MR MAC 1321 (H)

RAGLAN MISS DANA 758 (H)

### RAGLAN MISS 2270 (H)

PBF OCKENDEN MANSO 935/7 (ET) (H)

RAGLAN MISS 1354 (H)

RAGLAN MISS DORRIE 593 (IVF) (H)

Purchaser

\$

.





# RAGLAN BRAHMAN

A & R OLIVE  
RAGLAN, QLD  
0409 346 542

## 70

### **RAGLAN MR MANLEY (H) RAG3747M (H)**

RAG3747M | DOB:08/03/2020 | AGE: 27 MONTHS  
GREY | HORNED | REGISTERED

JDH PALESTIMO R MANSO (IMP US) (H)  
PBF RUTHERFORD MANSO 28/8 (H)  
PBF LADY DAY MANSO 472/5 (ET) (H)

### **RAGLAN MR MAC 1321 (H)**

BRAHROCK DETAILS 3238 (ET) (H)  
RAGLAN MISS DANA 758 (H)  
RAGLAN MISS DONNA (H)

JDH MR SHANNON MANSO (IMP US)  
PBF OCKENDEN MANSO 935/7 (ET) (H)

### **RAGLAN MISS 1430 (H)**

FBC F DATA ANN MANSO 206FF (ET) (H)  
GARUDA MR V8 CASINO (H)  
RAGLAN MISS 474 (H)  
RAGLAN MISS DESIRE (H)

Purchaser \_\_\_\_\_

\$ \_\_\_\_\_.

## 71

### **RAGLAN MR JAYLEN (H) RAG3738M (H)**

RAG3738M | DOB:18/02/2020 | AGE: 28 MONTHS  
GREY | HORNED | REGISTERED

LL MR DOC HOLIDAY 539  
MSP SPECIAL RELOAD 945 (IMP US) (H)  
MSP MS GREENBRIAR PETT

### **BRAHROCK JOCKEY 5075 (ET) (H)**

JDH MADISON MAN MANSO (IMP US) (H)  
BRAHROCK EMPRESS LADY 2516 (ET) (H)  
BRAHROCK MISS EMPRESS 1412 (ET) (H)

JDH MR MANSO 757/2 (IMP US) (ET) (H)  
CHASMACK PARK DIEGO MANSO 147 (IVF) (H)

### **RAGLAN MISS 2627 (H)**

PBF SENORITA MANSO 741/6 (ET) (H)  
PBF OCKENDEN MANSO 935/7 (ET) (H)  
RAGLAN MISS 1207 (H)  
RAGLAN MISS 476 (PS)

Purchaser \_\_\_\_\_

\$ \_\_\_\_\_.



# RAGLAN BRAHMAN

A & R OLIVE  
RAGLAN, QLD  
0409 346 542

## 72

**RAGLAN HENRY 3774 (PS) RAG3774M (PS)**  
RAG3774M | DOB:19/02/2020 | AGE: 28 MONTHS  
GREY | POLL/SCURRED | REGISTERED

BRAHROCK WISEMAN 2621 (ET) (H)  
ELANORA PARK WISE BUBBA (PS)  
ELANORA PARK ATLANTA 845 (AI) (H)

**WILLTONY HAILSTONE 770 (PS)**  
FBC D TOMMY DE MANSO (ET) (H)  
WILLTONY 226 (H)  
WILLTONY PADDYANNE MANSO (AI) (H)

MR V8 189/4 (IMP US) (H) +  
RAGLAN MR ALEX 133 (ET) (H)  
SPRING VALLEY 564 MS TEGAN (ET) (H)

**RAGLAN MISS 2186 (PS)**  
PBF OCKENDEN MANSO 935/7 (ET) (H)  
RAGLAN MISS 1348 (H)  
RAGLAN MISS 483 (PS)

Purchaser

\$

.

## 73

**RAGLAN MR TANNER (PS) RAG3691M (PS)**  
RAG3691M | DOB:11/02/2020 | AGE: 28 MONTHS  
GREY | POLL/SCURRED | REGISTERED

LANCEFIELD S CALABRE 2858 (PS)  
AVEE JACKSON 451 (PS)  
AVEE 264 (H)

**LANES CREEK WT JAGUAR 1821 (PS)**  
EL JA SAMSON DP MANSO (ET) (H)  
WILLTONY CLEO MANSO (AI) (PS)  
WILLTONY CARLAH (PS)

JDH MR MANSO 757/2 (IMP US) (ET) (H)  
CHASMAC PARK DIEGO MANSO 147 (IVF) (H)  
PBF SENORITA MANSO 741/6 (ET) (H)

**RAGLAN MISS 2396 (H)**  
CARINYA TITAN 6/1116 (H)  
RAGLAN MISS 1143 (H)  
RAGLAN MISS 511 (H)

Purchaser

\$

.



# RAGLAN BRAHMAN

A & R OLIVE  
RAGLAN, QLD  
0409 346 542

## 74

**RAGLAN WISE MAN 3772 (PS) RAG3772M (PS)**  
RAG3772M | DOB:22/03/2020 | AGE: 27 MONTHS  
GREY | POLL/SCURRED | REGISTERED

BRAHROCK WISEMAN 2621 (ET) (H)  
ELANORA PARK WISE BUBBA (PS)  
ELANORA PARK ATLANTA 845 (AI) (H)

**WILLTONY HAILSTONE 770 (PS)**

FBC D TOMMY DE MANSO (ET) (H)  
WILLTONY 226 (H)  
WILLTONY PADDYANNE MANSO (AI) (H)

JDH MADISON DE MANSO (IMP US) (ET) (H)  
BRAHROCK DETAILS 3238 (ET) (H)  
BRAHROCK MISS EMPRESS 1412 (ET) (H)

**RAGLAN MISS 1289 (H)**

YENDA OCTAGANOL 188/6 (ET) (H)  
RAGLAN MISS 119 (H)  
RAGLAN MISS 3/4 (H)

Purchaser

\$

.

## 75

**RAGLAN HARRY 3777 (PS) RAG3777M (PS)**  
RAG3777M | DOB:06/03/2020 | AGE: 27 MONTHS  
GREY | POLL/SCURRED | REGISTERED

BRAHROCK WISEMAN 2621 (ET) (H)  
ELANORA PARK WISE BUBBA (PS)  
ELANORA PARK ATLANTA 845 (AI) (H)

**WILLTONY HAILSTONE 770 (PS)**

FBC D TOMMY DE MANSO (ET) (H)  
WILLTONY 226 (H)  
WILLTONY PADDYANNE MANSO (AI) (H)

JDH MR SHANNON MANSO (IMP US)  
PBF OCKENDEN MANSO 935/7 (ET) (H)  
FBC F DATA ANN MANSO 206FF (ET) (H)

**RAGLAN MISS 2261 (H)**

JDH MR MANSO 258/4 (IMP US) (ET)  
RAGLAN MISS 989 (IVF) (PS)  
KABALA TALLAHASSEE (ET) (H)

Purchaser

\$

.



# RAGLAN BRAHMAN

A & R OLIVE  
RAGLAN, QLD  
0409 346 542

**76** **RAGLAN KELSO (PS)**  
AGE: 24-26 MONTHS  
GREY | POLL/SCURRED | HERD

**KENILWORTH BULL**

**PUREBRED GREY BRAHMAN POLLED COW**

Purchaser \_\_\_\_\_ \$ \_\_\_\_\_.

**77** **RAGLAN KENI (PS)**  
AGE: 24-26 MONTHS  
GREY | POLL/SCURRED | HERD

**KENILWORTH POLLED BULL**

**PUREBRED GREY BRAHMAN POLLED COW**

Purchaser \_\_\_\_\_ \$ \_\_\_\_\_.





Elders

# FOR JOINING OUR ONLINE COMMUNITY

*Join our online community, with the Elders Stud Stock QLD Facebook group. Scan the QR code below to visit our group and discuss all things stud stock today.*

Join our group for:

Sale Updates

Behind-the-scenes

Polls & Surveys

Meet other Studs

Conversations

Showcase your services

Photos & Videos

Learn about Stud Stock!



SCAN ME

**JOIN THE ELDERS STUD  
STOCK QLD FACEBOOK  
GROUP:**

*facebook.com/groups  
/eldersqldstudstock*

Elders Stud Stock - QLD Offices

PO Box 395  
Rockhampton  
P. 07 4838 9000

PO Box 7270  
Toowoomba  
P. 07 4636 8888



Elders

## STUD STOCK | AUCTION TERMS AND CONDITIONS OF SALE

**IMPORTANT NOTICE: All bids shall be treated as offers made upon the following Terms and Conditions of Sale and all persons present are admitted to attend the sale on the basis that they have notice of these Terms and Conditions.**

1. The highest bidder shall, subject to Condition 2, be the Purchaser provided that the Vendor reserves the right to bid either by himself or through his Agent or Auctioneer and should any dispute arise among the bidders for any lot, during or immediately after the sale of the lot, it shall be settled at the Auctioneers absolute discretion who may, should one of the disputants advance, put the lot or lots up again. The bidding from time to time shall be regulated by the Auctioneer and no bid shall be retracted.
2. The sale will be conducted on a "Sale" or "No Sale" basis whereby the lot for sale shall be knocked down to the highest bidder, but the sale will be subject to the acceptance of the highest bid by the Vendor who will immediately after the fall of the hammer declare "Sale" or "No Sale". Should the Vendor reject the bid of the highest bidder such bidder will have the right of first refusal of the lot at the Vendor's nominated price for one hour after the lot has been passed out of the ring on the T&Cs herein set forth in so far as they shall apply.
3. The details of the Purchaser, the purchase price and the lot sold as recorded by the sale clerk for and on behalf of the Auctioneer shall be equally binding on both Purchaser and Vendor.
4. The Auctioneer expressly reserves the right, without giving any reasons therefore, to:
  - (a) Refuse to acknowledge any bid;
  - (b) Withdraw any lot or lots before or during the sale;
  - (c) Exclude any person from the auction venue should it think fit.
5. Each lot in all cases shall be at the risk and expense of the Purchaser upon acceptance of his bid by the Vendor or upon acceptance of the highest bidder's offer by the Vendor whichever shall be the earlier.
6. Except as expressly provided in these Terms and Conditions of Sale no guarantee or warranty shall be given in respect of any lot sold under these Conditions as to pedigree, sex, age, breeding condition or otherwise howsoever, and no guarantee, warranty or condition whatsoever shall be implied from any affirmation made before or at the time of the sale, or from any circumstances of the sale, but in all cases where a guarantee is intended the same shall attach and be enforceable only if reduced to writing before delivery of the lot and signed by the Vendor or by the Auctioneer acting as agent for the Vendor, and the absence of such writing shall be conclusive evidence in case of dispute that no guarantee, warranty or condition whatsoever was given or implied.
7. In the event of any dispute in respect to the sale of any lot:
  - (i) The Purchaser shall nevertheless be obliged to pay to the Auctioneer the full purchase price and any other monies or interest payable by the Purchaser in accordance with these terms and conditions;
  - (ii) The Vendor and the Purchaser shall resolve the dispute between themselves;
  - (iii) The Auctioneer shall have no liability or responsibility in regard to the dispute; and
  - (iv) No lot shall be returned to the Auctioneer and the Purchaser shall indemnify the Auctioneer for all costs, expenses and damages which the Auctioneer is put to or incurs by reason of the Purchaser so doing.
8. The name of the Vendor for whom the Auctioneer acts is acknowledged to have been furnished to Purchasers prior to the sale and further particulars will in all cases be furnished to a Purchaser if required. In the case of any disputes the remedy of the Purchaser shall be against the Vendor only and in no case or

under any circumstances against the Auctioneer who is to be regarded for all intents and purposes as agent for a disclosed principal.

9. (a) PAYMENT – Unless prior credit arrangements have been made in writing with the Auctioneer the full purchase price for each lot shall be due and payable to the Auctioneer in cash upon acceptance of the highest bid or the highest bidder's offer by the Vendor and prior to delivery. Notwithstanding that delivery is given to or possession obtained by the purchaser or his representative prior to the payment of the purchase money in full the property in any lot which is sold shall not pass to the Purchaser until the full purchase price and all cheques, promissory notes, bills of exchange, acceptance orders or drafts given in connection with such payment have been paid and liquidated, and until property shall pass, the Purchaser shall hold such lot as bailee, provided that in all cases should such payment not have been made and liquidated within 14 days of the date of the sale the Auctioneer reserves the right to:–

(i) Rescind the contract on behalf of the Vendor and repossess and resell any lot;

(ii) Recover from the Purchaser interest upon the purchase price at a rate per annum which aggregates the AMBA Bill Rate plus two per centum.

For the purposes of this condition, the expression "the AMBA Bill Rate" is the rate published by the Australian Merchant Bankers Association in good faith as at the date of the sale as its bill rate for 180 day bills of exchange expressed as a percentage per annum. If at any time the AMBA Bill Rate becomes unavailable for any reason, the Auctioneer shall determine and advise the Purchaser of the interest rate to apply for the purposes of this condition.

(b) The Auctioneer is selling as the del credere agent of the Vendor and the full purchase price of any lot sold shall be payable by the Purchaser to the Auctioneer and be fully recoverable by the Auctioneer in its own name.

10. If the Purchaser shall neglect or fail to comply with any of the within conditions, any lot purchased by him may be immediately resold by public auction or private contract, with or without notice, at the risk of the former Purchaser, who will be held responsible for all loss and expenses arising out of such resale, and shall not participate in any profit accruing therefrom.

11. Any Vendor or Purchaser removing the sale number from any lot after it has been sold will fully indemnify all affected parties for any loss, costs or damage should the lot be wrongly delivered.

12. The Purchasers, if any more than one, shall be jointly and severally bound by these Terms and Conditions, and shall jointly and severally carry out and perform same.

13. Any person who advances a bid on a lot shall do so on the expressed condition and understanding that should that person's bid be the highest bid and such bid is accepted by the Vendor, then that person will be held personally liable for the price so agreed upon, regardless of the fact that that person may be acting on behalf of another party, either disclosed or undisclosed to the Vendor or Auctioneer, provided however, that this Condition shall not in any way negate the Vendor's right to claim against any principal and in such case the bidder's liability shall be construed to be by way of guarantee.

14. The Auctioneer may, should it think fit, make arrangements on a Purchaser's behalf for the feeding, watering, trucking, shipping of and general attendance to any lot after sale but no responsibility will be accepted by the Auctioneer and all such service will be at the Purchaser's risk and expense.

15. No lot will be delivered until the sales invoice has been checked and signed by the Purchaser or his duly authorised representative.

16. (a) Each lot in all cases shall be sold with all faults, if any, and excepting those conditions and warranties implied by the Trade Practices Act or any applicable State legislation which cannot be



contractually excluded and excepting conditions and warranties expressly contained in these Terms and Conditions of Sale, any express or implied condition, statement of warranty, statutory or otherwise, is hereby excluded. The Auctioneer is not liable in respect of any error, misdescription or omission in any particulars appearing or stated regarding the description of pedigrees of any lot offered for sale and no such error, misdescription or omission shall entitle the Purchaser to annul the sale or reject the lot or claim any compensation, damage or abatement in price.

(b) Each lot will be sold subject to passing all veterinary tests required by the law of the state or country to which the Purchaser intends to transport that particular lot, such tests to be undertaken at the Purchaser's expense and concluded immediately following the sale. In the event of a lot failing to pass these tests, the sale shall be null and void, any purchase moneys paid by the Purchaser shall be refunded and property in the lot shall revert to or remain with the Vendor.

17. Guarantees of Fertility:—

(1) BULLS - Save and except for calves at foot, all bulls are guaranteed breeders and to so prove by the later of:

(a) twelve months after the date of sale or

(b) the animal reaching the age of 24 months

(2) FEMALES - Save and except for w female calves at foot, all females are guaranteed to be in calf or go into calf by the later of: (a) 6 months of the date of sale

(b) the animal reaching the age of 30 months

A positive pregnancy test certified by a qualified veterinary surgeon shall be sufficient evidence that the animal is in calf.

(3) Claims under Clauses 17(1) and 17(2). A claim that an animal has failed to satisfy a guarantee of fertility under Clause 17(1) or 17(2) must be made to the Vendor

within the relevant guarantee period but prior to the animal entering a quarantine area other than on the Vendor's property.

a) All claims must be accompanied by a certificate from a registered veterinarian surgeon in accordance with the guidelines of the Australian Association of Cattle Veterinarians which must clearly identify the basis of the claim.

(b) Subject to Clause 17(9), infertility resulting from injury or disease occurring after the sale of the animal is not covered by this guarantee.

(c) The Vendor retains the right to have the animal placed on a property nominated by him or returned to his own property for further assessment of fertility for a period not exceeding six months. If the animal proves fertile within the period such status must be confirmed by a certificate issued by a registered veterinary surgeon in accordance with the guideline established by the Australian Association of Cattle Veterinarians and costs incurred must be borne by the Purchaser. If the animal is not proven fertile within the period, the costs incurred must be borne by the Vendor.

(4) LIABILITY OF A VENDOR - Except for costs defined elsewhere in the conditions of sale, the liability of a Vendor in respect of claims relating to fertility shall not exceed the purchase price of the animal(s) or provide mutually agreed upon replacement animal(s).

(5) In the event of a claim being substantiated:

(a) The purchase price shall be refunded within 14 days unless a mutually agreed upon replacement animal has been provided.

(b) The animal/s which are the subject of the claim shall automatically become the property of the Vendor and be returned to him or disposed of according to his instruction at his expense.

(6) Subject to Clause 17(9), this guarantee is of no effect if:

(a) The animal is returned to the Vendor.

(i) In poor physical condition or with any injury;

(ii) Tests carried out on behalf of the Vendor within fourteen days of such return proved positive to any diseases which may affect the animal's fertility or ability to breed naturally; or

(b) The Purchaser has collected and stored semen from a bull or  
(c) The Purchaser attempted any form of embryo collection from a female.

(7) In the event of a dispute as to whether a lot is a breeder, such dispute shall be resolved by the Vendor and the Purchaser. The Auctioneer, while he will use his best endeavours to assist, shall have no liability or responsibility in that regard. If an animal is alleged or proved not to be a breeder, the Purchaser must nevertheless pay the Auctioneer the full purchase price and any other monies or interest payable by the Purchaser in accordance with these Terms and Conditions.

(8) EVIDENCE OF FERTILITY – A Certificate issued by a registered veterinary surgeon at or before the time of sale that an animal is fertile (unless it is a certificate stating in respect of a female that she is in calf at the time of sale) does not, of itself, satisfy or discharge the Vendor's obligations under the guarantee of fertility given under this Clause 17. All animals, except calves at foot, must prove their fertility within the relevant guarantee period.

(9) RELIEF FROM GUARANTEE – If the Vendor seeks to be relieved from the obligations which would otherwise be imposed upon him by this clause by virtue of Clauses 17(3)(b) or 17(6)(a), the onus of proof is upon the Vendor to establish that:

(a) The animal suffered the injury or disease or is in poor physical condition due to circumstances and events occurring after the sale, and (b) The injury, disease or physical condition is the sole cause of the animal's infertility or failure to prove fertility within the guarantee period.

(10) DEFINITION – For the purpose of this Clause 17, the expression "guarantee period" means:

(a) in relation to bulls – the period specified in Clause 17(1) as being the period in which the bull must prove his fertility; and  
(b) in relation to females – the period specified in Clause 17(2) as being the period in which the female must go into calf.

18. (a) Each lot shall be at the risk of the Vendor in respect of any damage or injury, whether by disease, accident or otherwise, or whether caused by the negligence of the Auctioneer for the period that the lot be in the custody of the Auctioneer, unless such lots shall have been sold in which latter case such lot shall be at the risk of the Purchaser in all such respects.

(b) If any Vendor brings to the sale premises any lot which is dangerous, or infected with any disease, that Vendor shall be liable for all injury, damages, costs, losses or expenses which the Auctioneer may sustain, incur or be put to either directly or indirectly as a result of the Vendor so doing. The Auctioneer reserves the right, at its absolute discretion, to exclude from the sale, or put out of the sale venue or dispose of, any lot which in its opinion shows signs of any disease, whether infectious, contagious or not, or of any serious fault or of being dangerous.

19. DELIVERY – Except at the discretion of the Auctioneer no lot shall be delivered to the Purchaser unless payment of the purchase money together with any additional charges incurred including those expenses incurred by the Auctioneer pursuant to Condition 14 hereof, is first made by the Purchaser to the Auctioneer. Release of lots may be withheld by the Auctioneer until personal cheques are cleared.

20. In these Conditions:—

(a) References to "Auctioneer" shall be taken to mean as the context so admits, the Selling Agent or any member, subsidiary or related corporation or body, officer, agent or employee thereof, authorised by the Vendor to conduct the sale of the lot;

(b) "Purchaser" shall have the meaning ascribed to it in Condition 1;

(c) "Vendor" shall mean the person or corporation upon whose account lots are offered for sale and where a stud or farm is named shall mean the proprietor of that stud or farm;

(d) "Lot" shall be taken to mean the animal offered for sale and/or sold by the Auctioneer on behalf of a Vendor.

**IMPORTANT NOTICE**

The Selling Agent, its members, subsidiary or related corporations, officers, agents, and employees for themselves and for those for whom they act while exercising due care provide all information without responsibility and give no guarantee whatsoever as to its accuracy.

All persons who attend the Sale do so entirely at their risk and the Selling Agent, its members, subsidiary or related corporations, officers, agents, employees and its principals, for themselves and for those for whom they act, do not assume or accept any responsibility or liability of whatever nature for any injury or damage whatsoever which may occur.



*Elders*

# AG-GROW

ELITE BULL SALE

VIEW  
Sale Updates  
On Facebook



*Sale Contacts:*

*Anthony Ball 0428 275 499  
Andrew Meara 0427 210 634  
Eliza Connors 0419 644 813  
Don Tucker 0428 841 666  
Mark Scholes 0409 694 696*

